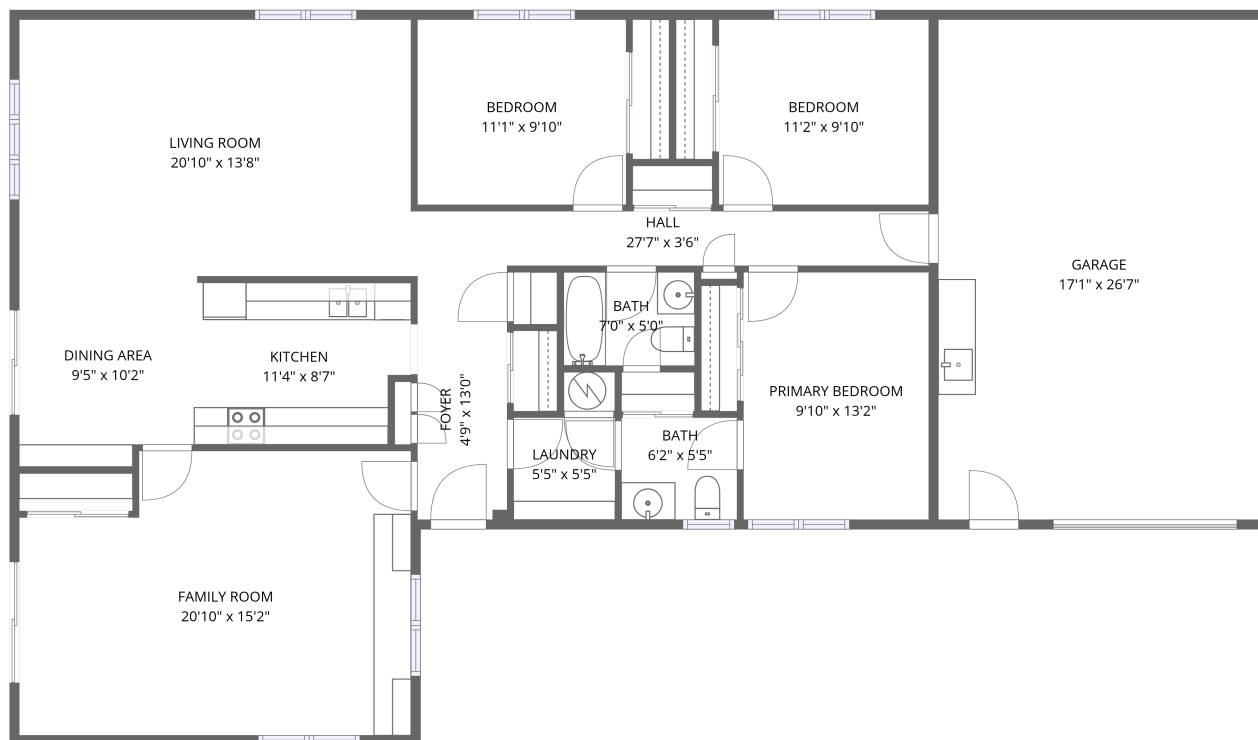


# Home data report

## 1740 Kenyon Rd, Ontario, New, US



1st floor

**Total Area: 1529 sq. ft**

1st Floor: 1529 sq. ft

Excluded: Garage 456 sq. ft, Walls: 118 sq. ft

### Property summary

 **1** Floors

 **3** Bedrooms

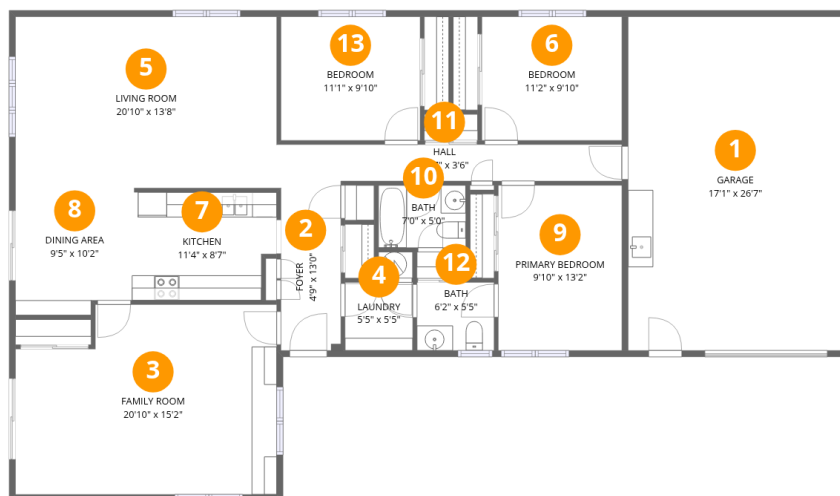
 **1** Bathrooms

Home data report

# 1740 Kenyon Rd, Ontario, New, US

 **1**  
Half baths

 **1**  
Garages



## Room dimensions

Floor 1

Total: 1529sqft Excluded: 456sqft

#		Dimensions	sqft	Counted as living area
1	Garage	17'1" x 26'7"	454 sq. ft	No
2	Foyer	4'9" x 13'0"	62 sq. ft	Yes
3	Family Room	20'10" x 15'2"	316 sq. ft	Yes
4	Laundry	5'5" x 5'5"	29 sq. ft	Yes
5	Living Room	20'10" x 13'8"	285 sq. ft	Yes
6	Bedroom	11'2" x 9'10"	110 sq. ft	Yes
7	Kitchen	11'4" x 8'7"	98 sq. ft	Yes
8	Dining Area	9'5" x 10'2"	96 sq. ft	Yes
9	Primary Bedroom	9'10" x 13'2"	130 sq. ft	Yes
10	Bath	7'0" x 5'0"	35 sq. ft	Yes
11	Hall	27'7" x 3'6"	96 sq. ft	Yes

Home data report

**1740 Kenyon Rd,Ontario,New,US**

#		Dimensions	sqft	Counted as living area
12	Bath	6'2" x 5'5"	34 sq. ft	Yes
13	Bedroom	11'1" x 9'10"	110 sq. ft	Yes

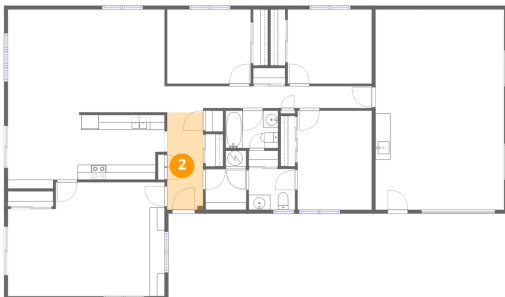
## 1 Floor 1 - Garage



Dimensions: 17'1" x 26'7"  
Area: 454 sq. ft  
Counted as living area: No

Heated: No  
Finished: No  
Enclosed: Yes  
Contiguous: Yes  
Permitted: Yes  
Wet space: No  
Addition: No  
Conversion: No

## 2 Floor 1 - Foyer



Dimensions: 4'9" x 13'0"  
Area: 62 sq. ft  
Counted as living area: Yes

Heated: Yes  
Finished: Yes  
Enclosed: Yes  
Contiguous: Yes  
Permitted: Yes  
Wet space: No  
Addition: No  
Conversion: No

### 3 Floor 1 - Family Room



Dimensions: 20'10" x 15'2"  
Area: 316 sq. ft  
Counted as living area: Yes

Heated: Yes  
Finished: Yes  
Enclosed: Yes  
Contiguous: Yes  
Permitted: Yes  
Wet space: No  
Addition: No  
Conversion: No

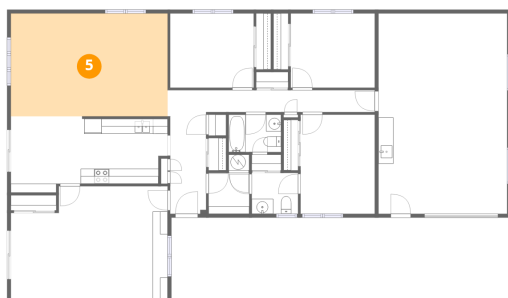
### 4 Floor 1 - Laundry



Dimensions: 5'5" x 5'5"  
Area: 29 sq. ft  
Counted as living area: Yes

Heated: Yes  
Finished: Yes  
Enclosed: Yes  
Contiguous: Yes  
Permitted: Yes  
Wet space: No  
Addition: No  
Conversion: No

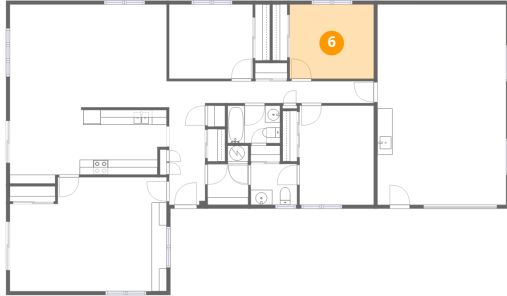
### 5 Floor 1 - Living Room



Dimensions: 20'10" x 13'8"  
Area: 285 sq. ft  
Counted as living area: Yes

Heated: Yes  
Finished: Yes  
Enclosed: Yes  
Contiguous: Yes  
Permitted: Yes  
Wet space: No  
Addition: No  
Conversion: No

## 6 Floor 1 - Bedroom



Dimensions: 11'2" x 9'10"  
Area: 110 sq. ft  
Counted as living area: Yes

Heated: Yes  
Finished: Yes  
Enclosed: Yes  
Contiguous: Yes  
Permitted: Yes  
Wet space: No  
Addition: No  
Conversion: No

## 7 Floor 1 - Kitchen



Dimensions: 11'4" x 8'7"  
Area: 98 sq. ft  
Counted as living area: Yes

Heated: Yes  
Finished: Yes  
Enclosed: Yes  
Contiguous: Yes  
Permitted: Yes  
Wet space: No  
Addition: No  
Conversion: No

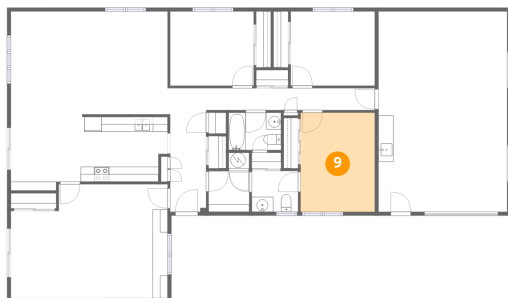
## 8 Floor 1 - Dining Area



Dimensions: 9'5" x 10'2"  
Area: 96 sq. ft  
Counted as living area: Yes

Heated: Yes  
Finished: Yes  
Enclosed: Yes  
Contiguous: Yes  
Permitted: Yes  
Wet space: No  
Addition: No  
Conversion: No

### 9 Floor 1 - Primary Bedroom



Dimensions: 9'10" x 13'2"  
Area: 130 sq. ft  
Counted as living area: Yes

Heated: Yes  
Finished: Yes  
Enclosed: Yes  
Contiguous: Yes  
Permitted: Yes  
Wet space: No  
Addition: No  
Conversion: No

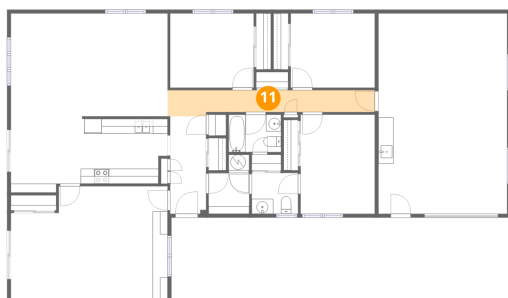
### 10 Floor 1 - Bath



Dimensions: 7'0" x 5'0"  
Area: 35 sq. ft  
Counted as living area: Yes

Heated: Yes  
Finished: Yes  
Enclosed: Yes  
Contiguous: Yes  
Permitted: Yes  
Wet space: Yes  
Addition: No  
Conversion: No

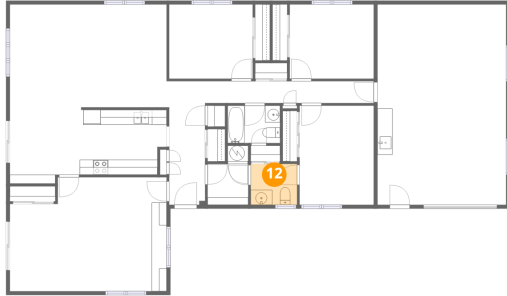
### 11 Floor 1 - Hall



Dimensions: 27'7" x 3'6"  
Area: 96 sq. ft  
Counted as living area: Yes

Heated: Yes  
Finished: Yes  
Enclosed: Yes  
Contiguous: Yes  
Permitted: Yes  
Wet space: No  
Addition: No  
Conversion: No

**12** Floor 1 - Bath



Dimensions: 6'2" x 5'5"  
Area: 34 sq. ft  
Counted as living area: Yes

Heated: Yes  
Finished: Yes  
Enclosed: Yes  
Contiguous: Yes  
Permitted: Yes  
Wet space: No  
Addition: No  
Conversion: No

**13** Floor 1 - Bedroom



Dimensions: 11'1" x 9'10"  
Area: 110 sq. ft  
Counted as living area: Yes

Heated: Yes  
Finished: Yes  
Enclosed: Yes  
Contiguous: Yes  
Permitted: Yes  
Wet space: No  
Addition: No  
Conversion: No