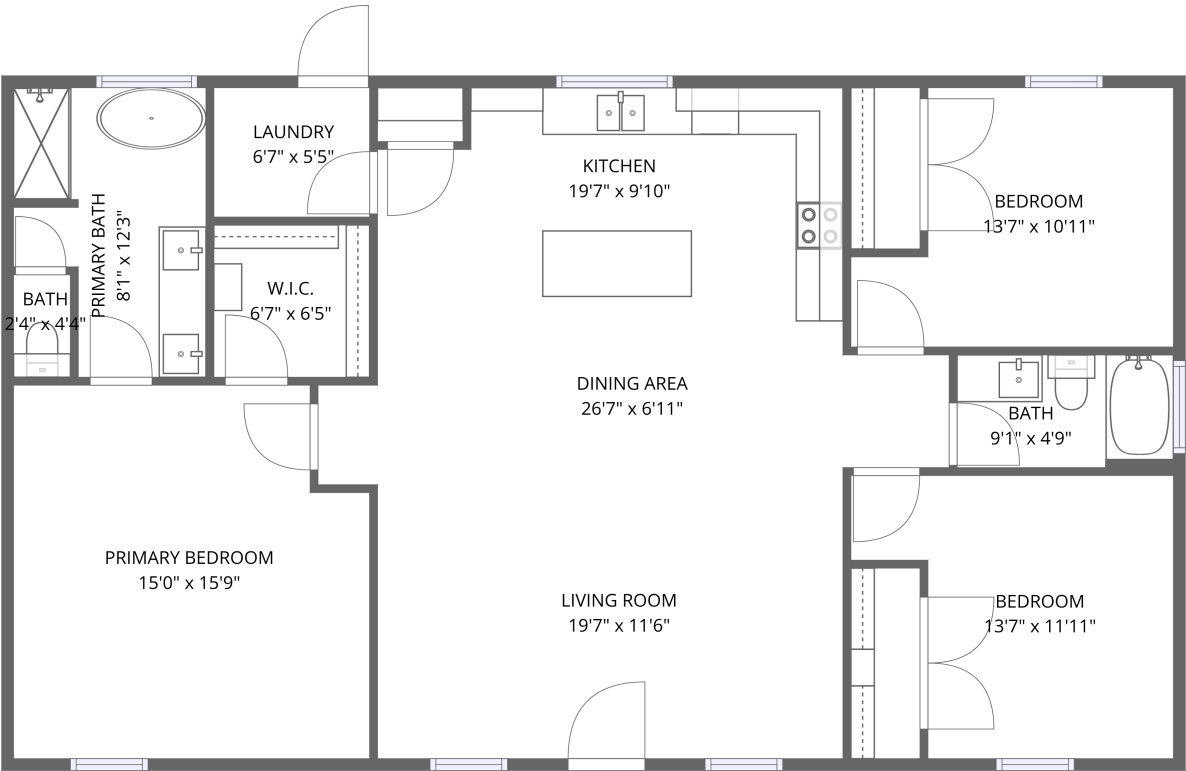


Home data report

9320 Apache Trail, Rio Vista, Texas 76093, United States



1st floor


Total Area: 1383 sq. ft

1st Floor: 1383 sq. ft

Excluded: Walls: 78 sq. ft

Property summary

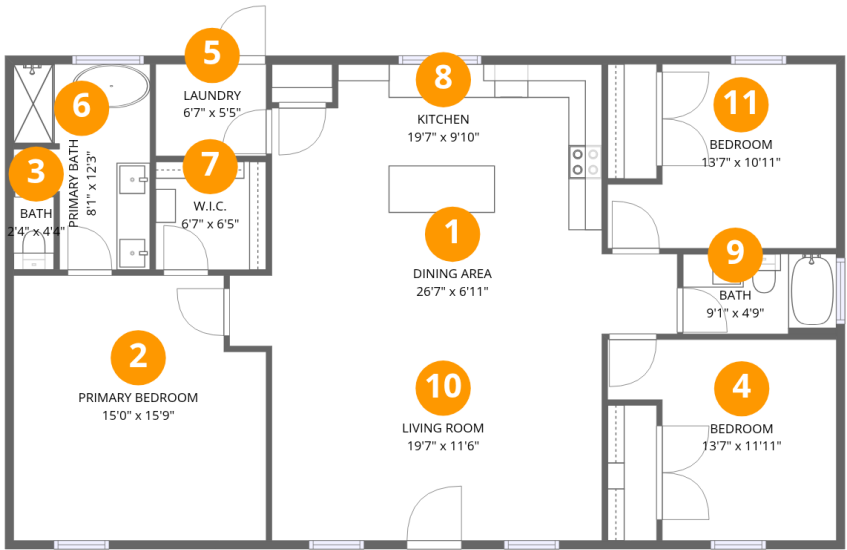
 1 Floors

 3 Bedrooms

 2 Bathrooms

Home data report

9320 Apache Trail, Rio Vista, Texas 76093, United States



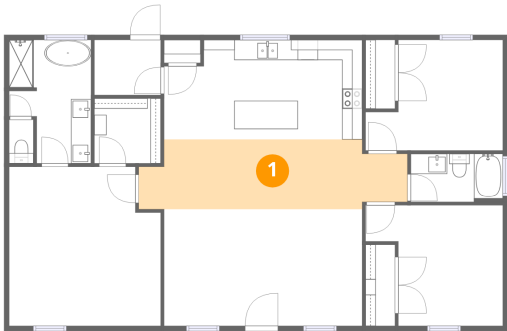
Room dimensions

Floor 1

Total:1383sqft Excluded: 0sqft

#		Dimensions	sqft	Counted as living area
1	Dining Area	26'7" x 6'11"	184 sq. ft	Yes
2	Primary Bedroom	15'0" x 15'9"	236 sq. ft	Yes
3	Bath	2'4" x 4'4"	10 sq. ft	Yes
4	Bedroom	13'7" x 11'11"	162 sq. ft	Yes
5	Laundry	6'7" x 5'5"	36 sq. ft	Yes
6	Primary Bath	8'1" x 12'3"	99 sq. ft	Yes
7	W.I.C.	6'7" x 6'5"	42 sq. ft	Yes
8	Kitchen	19'7" x 9'10"	193 sq. ft	Yes
9	Bath	9'1" x 4'9"	43 sq. ft	Yes
10	Living Room	19'7" x 11'6"	226 sq. ft	Yes
11	Bedroom	13'7" x 10'11"	149 sq. ft	Yes

1 Floor 1 - Dining Area



Dimensions: 26'7" x 6'11"
Area: 184 sq. ft
Counted as living area: Yes

Heated: Yes
Finished: Yes
Enclosed: Yes
Contiguous: Yes
Permitted: Yes
Wet space: No
Addition: No
Conversion: No

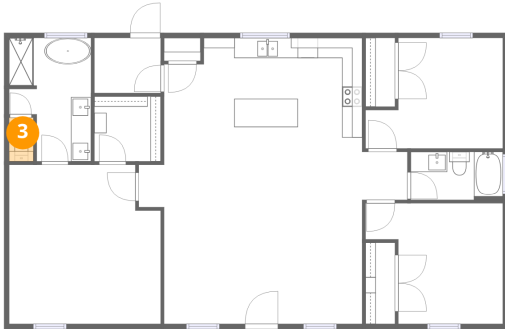
2 Floor 1 - Primary Bedroom



Dimensions: 15'0" x 15'9"
Area: 236 sq. ft
Counted as living area: Yes

Heated: Yes
Finished: Yes
Enclosed: Yes
Contiguous: Yes
Permitted: Yes
Wet space: No
Addition: No
Conversion: No

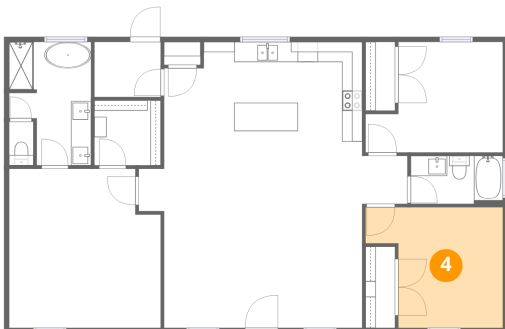
3 Floor 1 - Bath



Dimensions: 2'4" x 4'4"
Area: 10 sq. ft
Counted as living area: Yes

Heated: Yes
Finished: Yes
Enclosed: Yes
Contiguous: Yes
Permitted: Yes
Wet space: Yes
Addition: No
Conversion: No

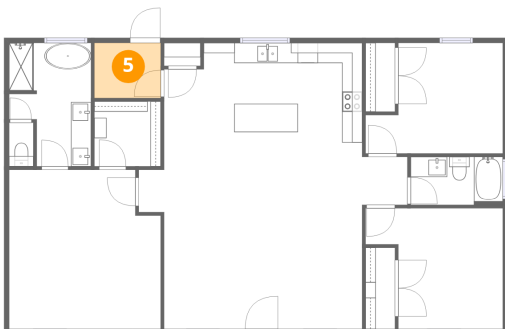
4 Floor 1 - Bedroom



Dimensions: 13'7" x 11'11"
Area: 162 sq. ft
Counted as living area: Yes

Heated: Yes
Finished: Yes
Enclosed: Yes
Contiguous: Yes
Permitted: Yes
Wet space: No
Addition: No
Conversion: No

5 Floor 1 - Laundry



Dimensions: 6'7" x 5'5"
Area: 36 sq. ft
Counted as living area: Yes

Heated: Yes
Finished: Yes
Enclosed: Yes
Contiguous: Yes
Permitted: Yes
Wet space: No
Addition: No
Conversion: No

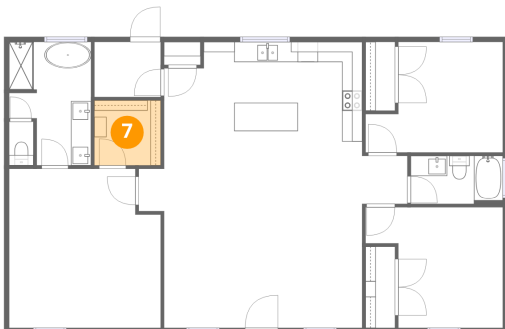
6 Floor 1 - Primary Bath



Dimensions: 8'1" x 12'3"
Area: 99 sq. ft
Counted as living area: Yes

Heated: Yes
Finished: Yes
Enclosed: Yes
Contiguous: Yes
Permitted: Yes
Wet space: Yes
Addition: No
Conversion: No

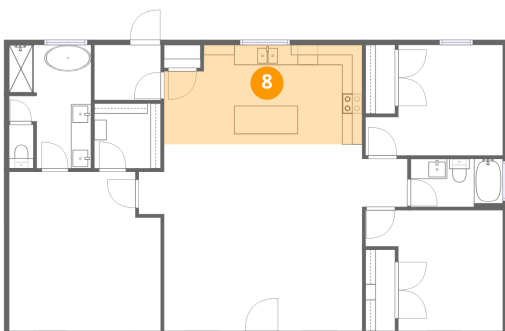
7 Floor 1 - W.I.C.



Dimensions: 6'7" x 6'5"
Area: 42 sq. ft
Counted as living area: Yes

Heated: Yes
Finished: Yes
Enclosed: Yes
Contiguous: Yes
Permitted: Yes
Wet space: No
Addition: No
Conversion: No

8 Floor 1 - Kitchen



Dimensions: 19'7" x 9'10"
Area: 193 sq. ft
Counted as living area: Yes

Heated: Yes
Finished: Yes
Enclosed: Yes
Contiguous: Yes
Permitted: Yes
Wet space: No
Addition: No
Conversion: No

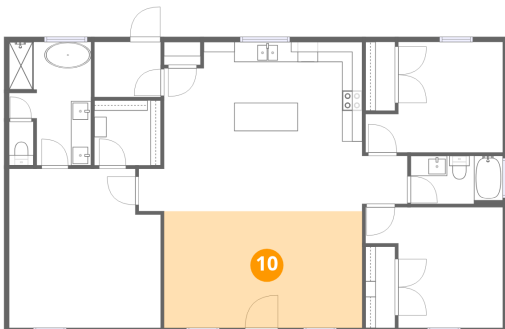
9 Floor 1 - Bath



Dimensions: 9'1" x 4'9"
Area: 43 sq. ft
Counted as living area: Yes

Heated: Yes
Finished: Yes
Enclosed: Yes
Contiguous: Yes
Permitted: Yes
Wet space: Yes
Addition: No
Conversion: No

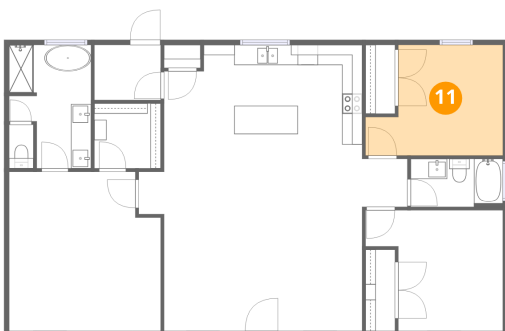
10 Floor 1 - Living Room



Dimensions: 19'7" x 11'6"
Area: 226 sq. ft
Counted as living area: Yes

Heated: Yes
Finished: Yes
Enclosed: Yes
Contiguous: Yes
Permitted: Yes
Wet space: No
Addition: No
Conversion: No

11 Floor 1 - Bedroom



Dimensions: 13'7" x 10'11"
Area: 149 sq. ft
Counted as living area: Yes

Heated: Yes
Finished: Yes
Enclosed: Yes
Contiguous: Yes
Permitted: Yes
Wet space: No
Addition: No
Conversion: No