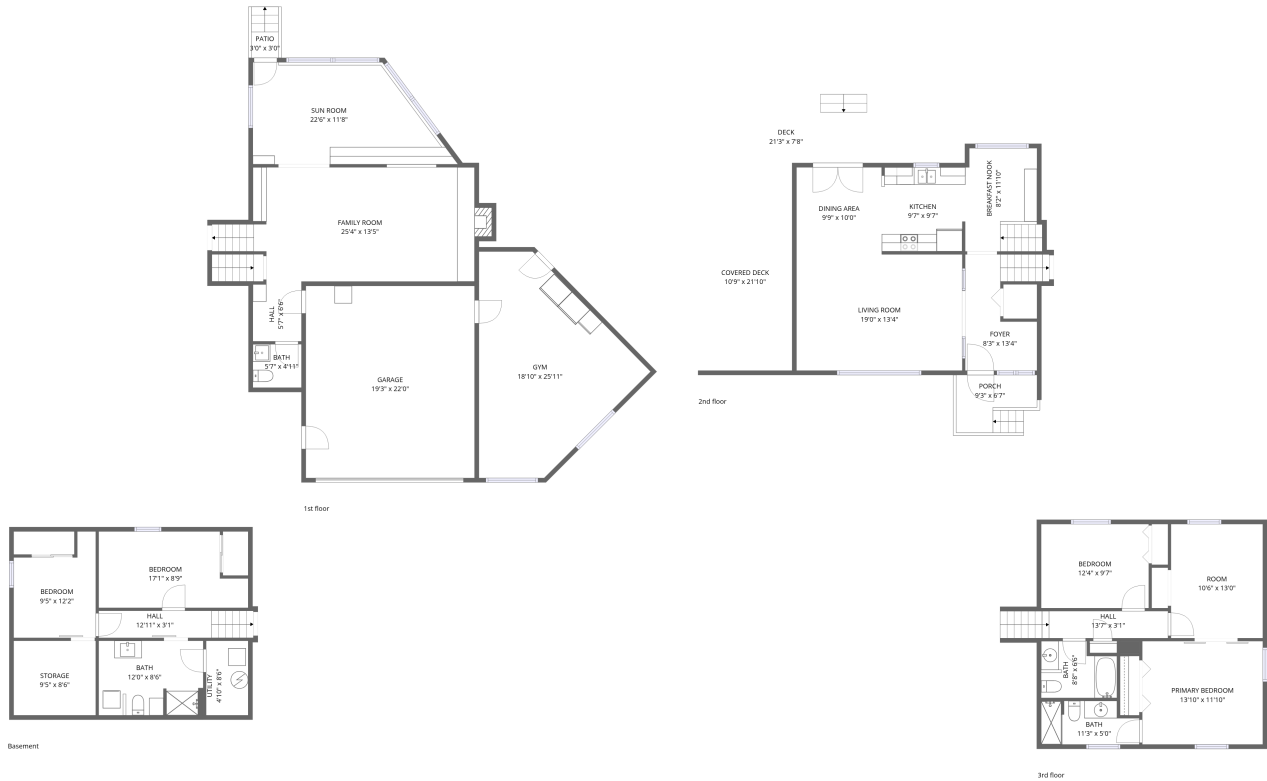


## Home data report

1721 27th Avenue, Greeley, Weld County, Colorado, United States, 80634



**Total Area: 2773 sq. ft**

Basement: 446 sq. ft, 1st Floor: 1008 sq. ft, 2nd Floor: 665 sq. ft, 3rd Floor: 654 sq. ft

Excluded: Utility 41 sq. ft, Storage 80 sq. ft, Garage 425 sq. ft, Patio 9 sq. ft, Fireplace 9 sq. ft, Porch 47 sq. ft, Covered deck 235 sq. ft, Deck 133 sq. ft, Walls: 278 sq. ft

## Property summary

 **4** Floors

 **4** Bedrooms

 **3** Bathrooms

Home data report

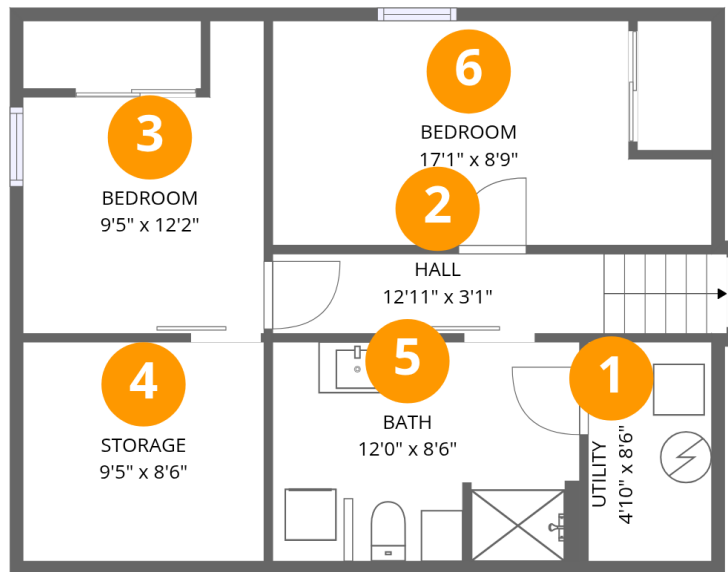
**1721 27th Avenue, Greeley, Weld County, Colorado, United States, 80634**

 **1**  
Half baths

 **1**  
Garages

## Home data report

1721 27th Avenue, Greeley, Weld County, Colorado, United States, 80634



## Room dimensions

Floor 1 Below grade

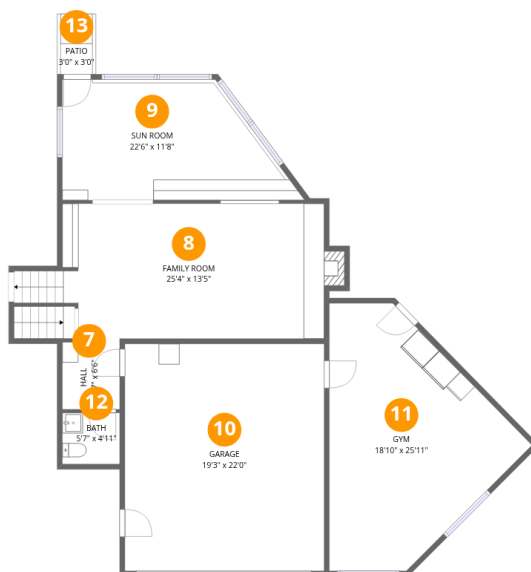
Total:446sqft

Excluded: 121sqft

#		Dimensions	sqft	Counted as living area
1	Utility	4'10" x 8'6"	41 sq. ft	No
2	Hall	12'11" x 3'1"	55 sq. ft	Yes
3	Bedroom	9'5" x 12'2"	93 sq. ft	Yes
4	Storage	9'5" x 8'6"	80 sq. ft	No
5	Bath	12'0" x 8'6"	101 sq. ft	Yes
6	Bedroom	17'1" x 8'9"	132 sq. ft	Yes

# Home data report

## 1721 27th Avenue, Greeley, Weld County, Colorado, United States, 80634



### Room dimensions

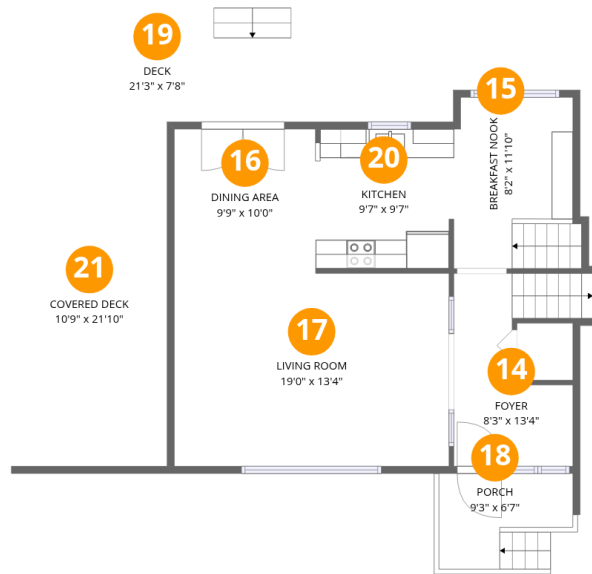
Floor 2

Total:1008sqft Excluded: 443sqft

#		Dimensions	sqft	Counted as living area
7	Hall	5'7" x 6'6"	36 sq. ft	Yes
8	Family Room	25'4" x 13'5"	350 sq. ft	Yes
9	Sun Room	22'6" x 11'8"	224 sq. ft	Yes
10	Garage	19'3" x 22'0"	425 sq. ft	No
11	Gym	18'10" x 25'11"	342 sq. ft	Yes
12	Bath	5'7" x 4'11"	28 sq. ft	Yes
13	Patio	3'0" x 3'0"	9 sq. ft	No

## Home data report

1721 27th Avenue, Greeley, Weld County, Colorado, United States, 80634



## Room dimensions

Floor 3

Total:665sqft

Excluded: 415sqft

#		Dimensions	sqft	Counted as living area
14	Foyer	8'3" x 13'4"	94 sq. ft	Yes
15	Breakfast Nook	8'2" x 11'10"	98 sq. ft	Yes
16	Dining Area	9'9" x 10'0"	97 sq. ft	Yes
17	Living Room	19'0" x 13'4"	252 sq. ft	Yes
18	Porch	9'3" x 6'7"	47 sq. ft	No
19	Deck	21'3" x 7'8"	133 sq. ft	No
20	Kitchen	9'7" x 9'7"	91 sq. ft	Yes
21	Covered Deck	10'9" x 21'10"	235 sq. ft	No

Home data report

1721 27th Avenue, Greeley, Weld County, Colorado, United States, 80634



## Room dimensions

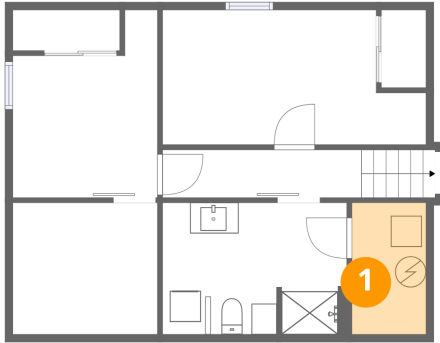
Floor 4

Total:654sqft

Excluded: 0sqft

#		Dimensions	sqft	Counted as living area
22	Room	10'6" x 13'0"	137 sq. ft	Yes
23	Hall	13'7" x 3'1"	60 sq. ft	Yes
24	Primary Bedroom	13'10" x 11'10"	163 sq. ft	Yes
25	Bedroom	12'4" x 9'7"	119 sq. ft	Yes
26	Bath	8'8" x 6'6"	51 sq. ft	Yes
27	Bath	11'3" x 5'0"	50 sq. ft	Yes

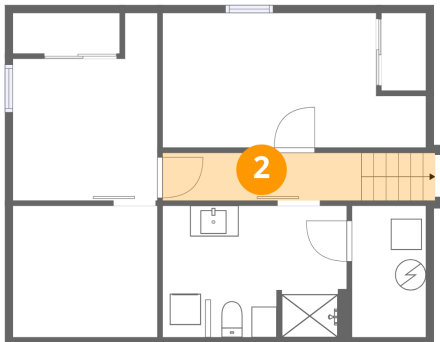
## 1 Floor 1 - Utility



Dimensions: 4'10" x 8'6"  
Area: 41 sq. ft  
Counted as living area: No

Heated: Yes  
Finished: No  
Enclosed: Yes  
Contiguous: Yes  
Permitted: Yes  
Wet space: No  
Addition: No  
Conversion: No

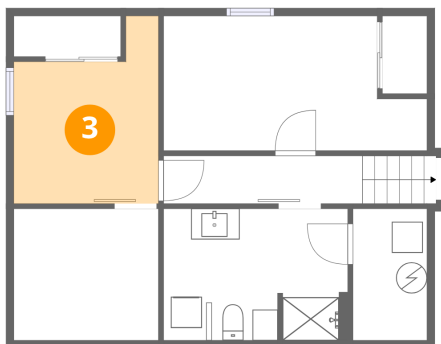
## 2 Floor 1 - Hall



Dimensions: 12'11" x 3'1"  
Area: 55 sq. ft  
Counted as living area: Yes

Heated: Yes  
Finished: Yes  
Enclosed: Yes  
Contiguous: Yes  
Permitted: Yes  
Wet space: No  
Addition: No  
Conversion: No

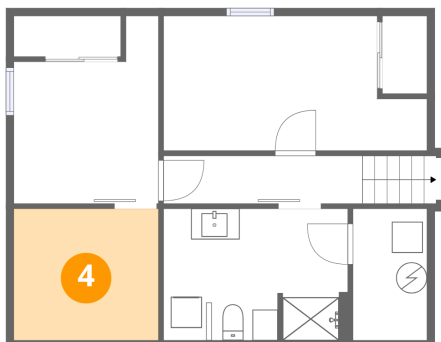
### 3 Floor 1 - Bedroom



Dimensions: 9'5" x 12'2"  
Area: 93 sq. ft  
Counted as living area: Yes

Heated: Yes  
Finished: Yes  
Enclosed: Yes  
Contiguous: Yes  
Permitted: Yes  
Wet space: No  
Addition: No  
Conversion: No

### 4 Floor 1 - Storage



Dimensions: 9'5" x 8'6"  
Area: 80 sq. ft  
Counted as living area: No

Heated: No  
Finished: No  
Enclosed: No  
Contiguous: Yes  
Permitted: Yes  
Wet space: No  
Addition: No  
Conversion: No

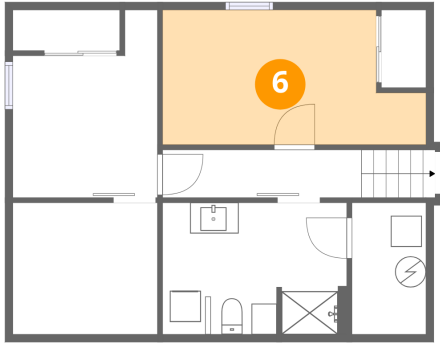
### 5 Floor 1 - Bath



Dimensions: 12'0" x 8'6"  
Area: 101 sq. ft  
Counted as living area: Yes

Heated: Yes  
Finished: Yes  
Enclosed: Yes  
Contiguous: Yes  
Permitted: Yes  
Wet space: Yes  
Addition: No  
Conversion: No

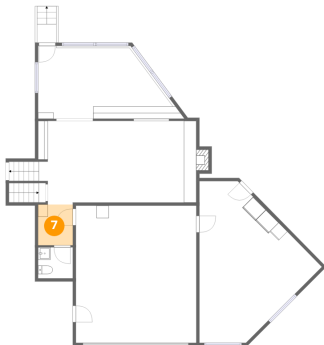
**6** Floor 1 - Bedroom



Dimensions: 17'1" x 8'9"  
Area: 132 sq. ft  
Counted as living area: Yes

Heated: Yes  
Finished: Yes  
Enclosed: Yes  
Contiguous: Yes  
Permitted: Yes  
Wet space: No  
Addition: No  
Conversion: No

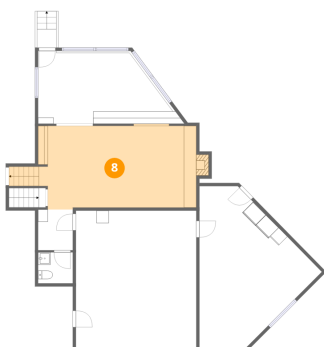
**7** Floor 2 - Hall



Dimensions: 5'7" x 6'6"  
Area: 36 sq. ft  
Counted as living area: Yes

Heated: Yes  
Finished: Yes  
Enclosed: Yes  
Contiguous: Yes  
Permitted: Yes  
Wet space: No  
Addition: No  
Conversion: No

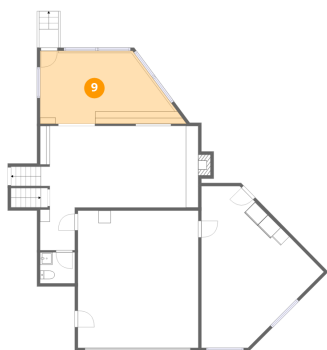
**8** Floor 2 - Family Room



Dimensions: 25'4" x 13'5"  
Area: 350 sq. ft  
Counted as living area: Yes

Heated: Yes  
Finished: Yes  
Enclosed: Yes  
Contiguous: Yes  
Permitted: Yes  
Wet space: No  
Addition: No  
Conversion: No

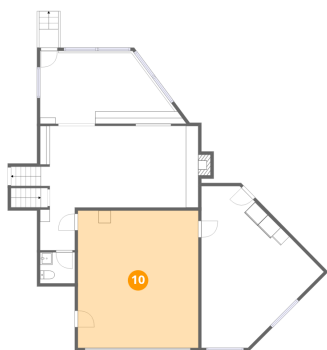
### 9 Floor 2 - Sun Room



Dimensions: 22'6" x 11'8"  
Area: 224 sq. ft  
Counted as living area: Yes

Heated: Yes  
Finished: Yes  
Enclosed: Yes  
Contiguous: Yes  
Permitted: Yes  
Wet space: No  
Addition: No  
Conversion: No

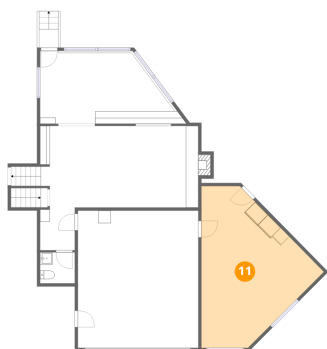
### 10 Floor 2 - Garage



Dimensions: 19'3" x 22'0"  
Area: 425 sq. ft  
Counted as living area: No

Heated: No  
Finished: No  
Enclosed: Yes  
Contiguous: Yes  
Permitted: Yes  
Wet space: No  
Addition: No  
Conversion: No

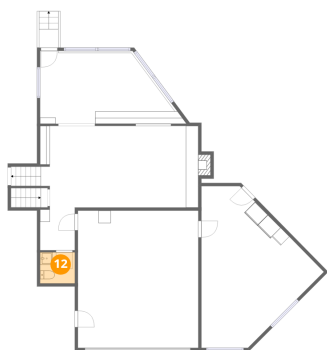
### 11 Floor 2 - Gym



Dimensions: 18'10" x 25'11"  
Area: 342 sq. ft  
Counted as living area: No

Heated: Yes  
Finished: Yes  
Enclosed: Yes  
Contiguous: No  
Permitted: Yes  
Wet space: No  
Addition: No  
Conversion: No

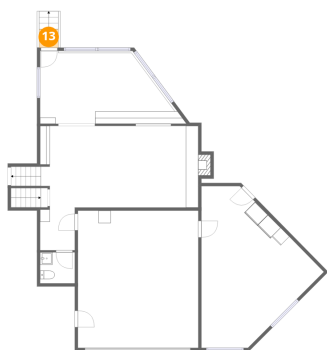
**12** Floor 2 - Bath



Dimensions: 5'7" x 4'11"  
Area: 28 sq. ft  
Counted as living area: Yes

Heated: Yes  
Finished: Yes  
Enclosed: Yes  
Contiguous: Yes  
Permitted: Yes  
Wet space: Yes  
Addition: No  
Conversion: No

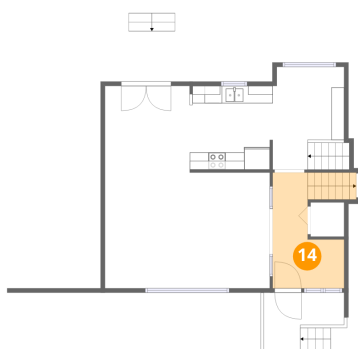
**13** Floor 2 - Patio



Dimensions: 3'0" x 3'0"  
Area: 9 sq. ft  
Counted as living area: No

Heated: No  
Finished: No  
Enclosed: No  
Contiguous: Yes  
Permitted: Yes  
Wet space: No  
Addition: No  
Conversion: No

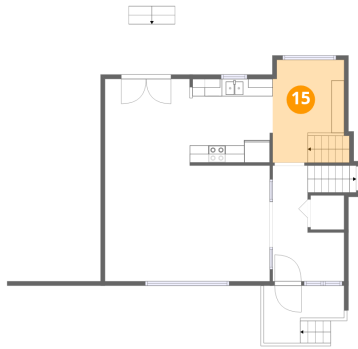
**14** Floor 3 - Foyer



Dimensions: 8'3" x 13'4"  
Area: 94 sq. ft  
Counted as living area: Yes

Heated: Yes  
Finished: Yes  
Enclosed: Yes  
Contiguous: Yes  
Permitted: Yes  
Wet space: No  
Addition: No  
Conversion: No

### 15 Floor 3 - Breakfast Nook



Dimensions: 8'2" x 11'10"  
Area: 98 sq. ft  
Counted as living area: Yes

Heated: Yes  
Finished: Yes  
Enclosed: Yes  
Contiguous: Yes  
Permitted: Yes  
Wet space: No  
Addition: No  
Conversion: No

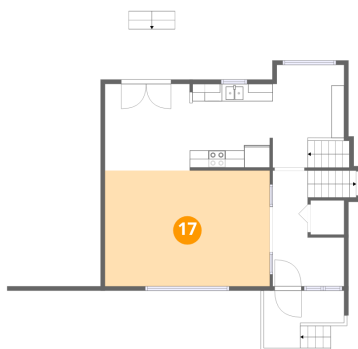
### 16 Floor 3 - Dining Area



Dimensions: 9'9" x 10'0"  
Area: 97 sq. ft  
Counted as living area: Yes

Heated: Yes  
Finished: Yes  
Enclosed: Yes  
Contiguous: Yes  
Permitted: Yes  
Wet space: No  
Addition: No  
Conversion: No

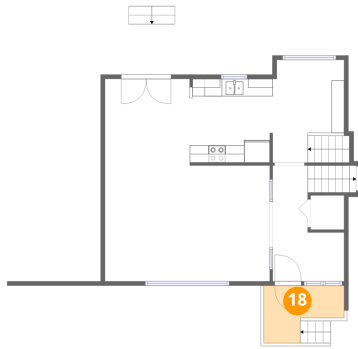
### 17 Floor 3 - Living Room



Dimensions: 19'0" x 13'4"  
Area: 252 sq. ft  
Counted as living area: Yes

Heated: Yes  
Finished: Yes  
Enclosed: Yes  
Contiguous: Yes  
Permitted: Yes  
Wet space: No  
Addition: No  
Conversion: No

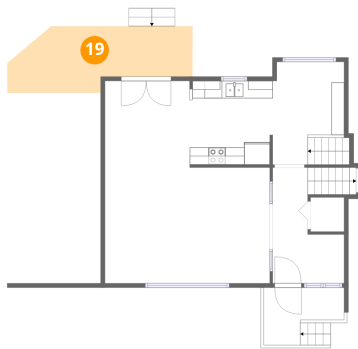
**18** Floor 3 - Porch



Dimensions: 9'3" x 6'7"  
Area: 47 sq. ft  
Counted as living area: No

Heated: No  
Finished: No  
Enclosed: No  
Contiguous: Yes  
Permitted: Yes  
Wet space: No  
Addition: No  
Conversion: No

**19** Floor 3 - Deck



Dimensions: 21'3" x 7'8"  
Area: 133 sq. ft  
Counted as living area: No

Heated: No  
Finished: No  
Enclosed: No  
Contiguous: Yes  
Permitted: Yes  
Wet space: No  
Addition: No  
Conversion: No

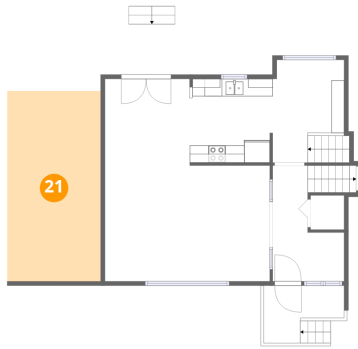
**20** Floor 3 - Kitchen



Dimensions: 9'7" x 9'7"  
Area: 91 sq. ft  
Counted as living area: Yes

Heated: Yes  
Finished: Yes  
Enclosed: Yes  
Contiguous: Yes  
Permitted: Yes  
Wet space: No  
Addition: No  
Conversion: No

### 21 Floor 3 - Covered Deck



Dimensions: 10'9" x 21'10"  
Area: 235 sq. ft  
Counted as living area: No

Heated: No  
Finished: No  
Enclosed: No  
Contiguous: Yes  
Permitted: Yes  
Wet space: No  
Addition: No  
Conversion: No

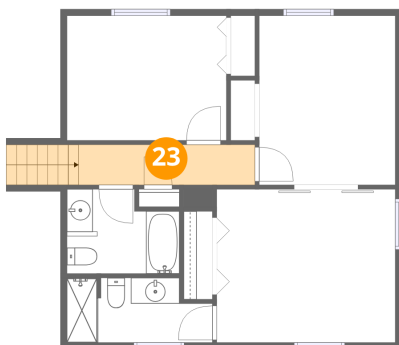
### 22 Floor 4 - Room



Dimensions: 10'6" x 13'0"  
Area: 137 sq. ft  
Counted as living area: Yes

Heated: Yes  
Finished: Yes  
Enclosed: Yes  
Contiguous: Yes  
Permitted: Yes  
Wet space: No  
Addition: No  
Conversion: No

### 23 Floor 4 - Hall



Dimensions: 13'7" x 3'1"  
Area: 60 sq. ft  
Counted as living area: Yes

Heated: Yes  
Finished: Yes  
Enclosed: Yes  
Contiguous: Yes  
Permitted: Yes  
Wet space: No  
Addition: No  
Conversion: No

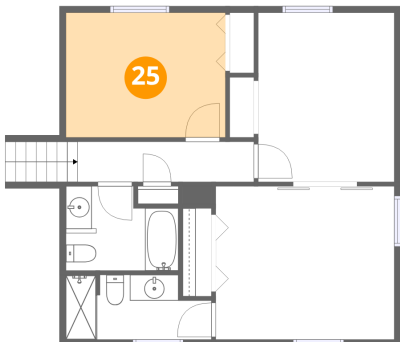
**24** Floor 4 - Primary Bedroom



Dimensions: 13'10" x 11'10"  
Area: 163 sq. ft  
Counted as living area: Yes

Heated: Yes  
Finished: Yes  
Enclosed: Yes  
Contiguous: Yes  
Permitted: Yes  
Wet space: No  
Addition: No  
Conversion: No

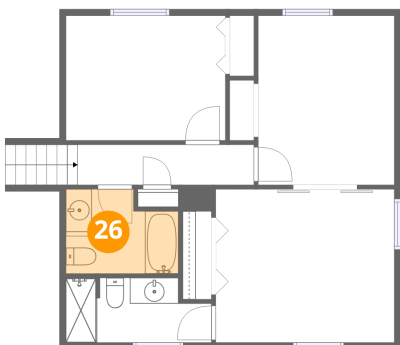
**25** Floor 4 - Bedroom



Dimensions: 12'4" x 9'7"  
Area: 119 sq. ft  
Counted as living area: Yes

Heated: Yes  
Finished: Yes  
Enclosed: Yes  
Contiguous: Yes  
Permitted: Yes  
Wet space: No  
Addition: No  
Conversion: No

**26** Floor 4 - Bath



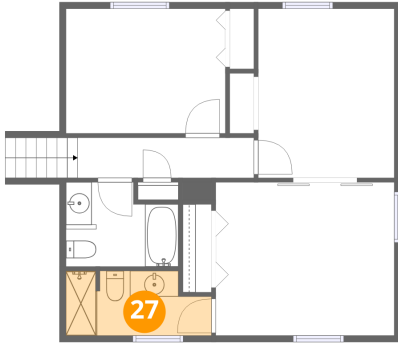
Dimensions: 8'8" x 6'6"  
Area: 51 sq. ft  
Counted as living area: Yes

Heated: Yes  
Finished: Yes  
Enclosed: Yes  
Contiguous: Yes  
Permitted: Yes  
Wet space: Yes  
Addition: No  
Conversion: No

Home data report

1721 27th Avenue, Greeley, Weld County, Colorado, United States, 80634

**27** Floor 4 - Bath



Dimensions: 11'3" x 5'0"  
Area: 50 sq. ft  
Counted as living area: Yes

Heated: Yes  
Finished: Yes  
Enclosed: Yes  
Contiguous: Yes  
Permitted: Yes  
Wet space: Yes  
Addition: No  
Conversion: No