

Home data report

23 Chilton Avenue, Rocky Nook Park, Kingston, Plymouth County, Massachusetts, United States, 02364



Total Area: 2751 sq. ft

Basement: 485 sq. ft, 1st Floor: 900 sq. ft, 2nd Floor: 900 sq. ft, 3rd Floor: 466 sq. ft

Excluded: Utility 415 sq. ft, Porch 151 sq. ft, Deck 239 sq. ft, Attic 167 sq. ft, Low ceiling 162 sq. ft, Walls: 251 sq. ft

Property summary

 **4** Floors

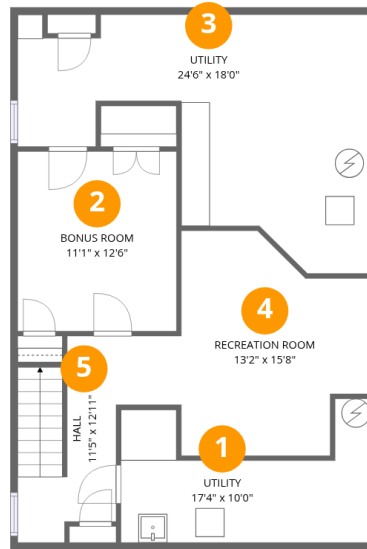
 **4** Bedrooms

 **3** Bathrooms

 **1** Half baths

Home data report

23 Chilton Avenue, Rocky Nook Park, Kingston, Plymouth County, Massachusetts, United States, 02364



Room dimensions

Floor 1 Below grade

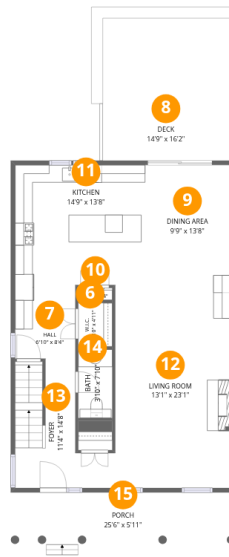
Total:485sqft

Excluded: 415sqft

#		Dimensions	sqft	Counted as living area
1	Utility	17'4" x 10'0"	123 sq. ft	No
2	Bonus Room	11'1" x 12'6"	138 sq. ft	Yes
3	Utility	24'6" x 18'0"	292 sq. ft	No
4	Recreation Room	13'2" x 15'8"	173 sq. ft	Yes
5	Hall	11'5" x 12'11"	105 sq. ft	Yes

Home data report

23 Chilton Avenue, Rocky Nook Park, Kingston, Plymouth County, Massachusetts, United States, 02364



Room dimensions

Floor 2

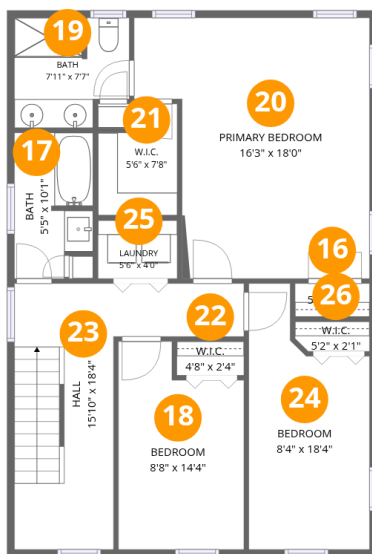
Total:900sqft

Excluded: 390sqft

#		Dimensions	sqft	Counted as living area
6	W.I.C.	3'10" x 4'11"	19 sq. ft	Yes
7	Hall	6'10" x 8'4"	57 sq. ft	Yes
8	Deck	14'9" x 16'2"	239 sq. ft	No
9	Dining Area	9'9" x 13'8"	133 sq. ft	Yes
10	Pantry	3'10" x 1'4"	5 sq. ft	Yes
11	Kitchen	14'9" x 13'8"	201 sq. ft	Yes
12	Living Room	13'1" x 23'1"	303 sq. ft	Yes
13	Foyer	11'4" x 14'8"	116 sq. ft	Yes
14	Bath	3'10" x 7'10"	30 sq. ft	Yes
15	Porch	25'6" x 5'11"	151 sq. ft	No

Home data report

23 Chilton Avenue, Rocky Nook Park, Kingston, Plymouth County, Massachusetts, United States, 02364



Room dimensions

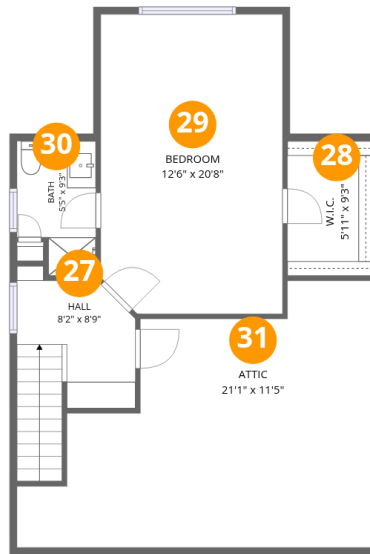
Floor 3

Total:900sqft Excluded: 0sqft

#		Dimensions	sqft	Counted as living area
16	W.I.C.	5'2" x 2'3"	12 sq. ft	Yes
17	Bath	5'5" x 10'1"	50 sq. ft	Yes
18	Bedroom	8'8" x 14'4"	111 sq. ft	Yes
19	Bath	7'11" x 7'7"	54 sq. ft	Yes
20	Primary Bedroom	16'3" x 18'0"	252 sq. ft	Yes
21	W.I.C.	5'6" x 7'8"	37 sq. ft	Yes
22	W.I.C.	4'8" x 2'4"	11 sq. ft	Yes
23	Hall	15'10" x 18'4"	159 sq. ft	Yes
24	Bedroom	8'4" x 18'4"	126 sq. ft	Yes
25	Laundry	5'6" x 4'0"	22 sq. ft	Yes
26	W.I.C.	5'2" x 2'1"	10 sq. ft	Yes

Home data report

23 Chilton Avenue, Rocky Nook Park, Kingston, Plymouth County, Massachusetts, United States, 02364



Room dimensions

Floor 4

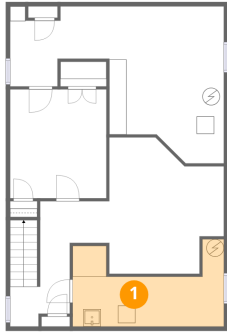
Total:466sqft

Excluded: 329sqft

#		Dimensions	sqft	Counted as living area
27	Hall	8'2" x 8'9"	85 sq. ft	Yes
28	W.I.C.	5'11" x 9'3"	55 sq. ft	Yes
29	Bedroom	12'6" x 20'8"	255 sq. ft	Yes
30	Bath	5'5" x 9'3"	45 sq. ft	Yes
31	Attic	21'1" x 11'5"	167 sq. ft	No

23 Chilton Avenue, Rocky Nook Park, Kingston, Plymouth County, Massachusetts, United States, 02364

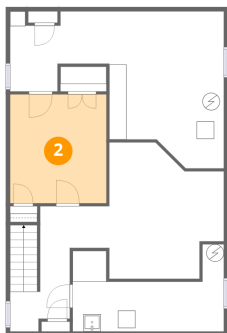
1 Floor 1 - Utility



Dimensions: 17'4" x 10'0"
Area: 123 sq. ft
Counted as living area: No

Heated: Yes
Finished: No
Enclosed: Yes
Contiguous: Yes
Permitted: Yes
Wet space: No
Addition: No
Conversion: No

2 Floor 1 - Bonus Room

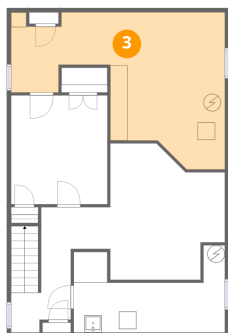


Dimensions: 11'1" x 12'6"
Area: 138 sq. ft
Counted as living area: Yes

Heated: Yes
Finished: Yes
Enclosed: Yes
Contiguous: Yes
Permitted: Yes
Wet space: No
Addition: No
Conversion: No

23 Chilton Avenue, Rocky Nook Park, Kingston, Plymouth County, Massachusetts, United States, 02364

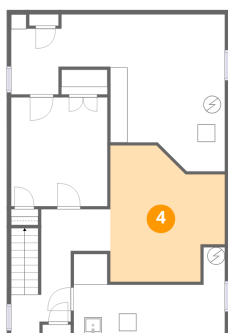
3 Floor 1 - Utility



Dimensions: 24'6" x 18'0"
Area: 292 sq. ft
Counted as living area: No

Heated: Yes
Finished: No
Enclosed: Yes
Contiguous: Yes
Permitted: Yes
Wet space: No
Addition: No
Conversion: No

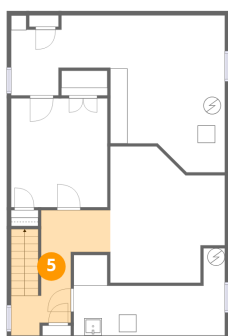
4 Floor 1 - Recreation Room



Dimensions: 13'2" x 15'8"
Area: 173 sq. ft
Counted as living area: Yes

Heated: Yes
Finished: Yes
Enclosed: Yes
Contiguous: Yes
Permitted: Yes
Wet space: No
Addition: No
Conversion: No

5 Floor 1 - Hall



Dimensions: 11'5" x 12'11"
Area: 105 sq. ft
Counted as living area: Yes

Heated: Yes
Finished: Yes
Enclosed: Yes
Contiguous: Yes
Permitted: Yes
Wet space: No
Addition: No
Conversion: No

23 Chilton Avenue, Rocky Nook Park, Kingston, Plymouth County, Massachusetts, United States, 02364

6 Floor 2 - W.I.C.



Dimensions: 3'10" x 4'11"
Area: 19 sq. ft
Counted as living area: Yes

Heated: Yes
Finished: Yes
Enclosed: Yes
Contiguous: Yes
Permitted: Yes
Wet space: No
Addition: No
Conversion: No

7 Floor 2 - Hall



Dimensions: 6'10" x 8'4"
Area: 57 sq. ft
Counted as living area: Yes

Heated: Yes
Finished: Yes
Enclosed: Yes
Contiguous: Yes
Permitted: Yes
Wet space: No
Addition: No
Conversion: No

8 Floor 2 - Deck



Dimensions: 14'9" x 16'2"
Area: 239 sq. ft
Counted as living area: No

Heated: No
Finished: No
Enclosed: No
Contiguous: Yes
Permitted: Yes
Wet space: No
Addition: No
Conversion: No

23 Chilton Avenue, Rocky Nook Park, Kingston, Plymouth County, Massachusetts, United States, 02364

9 Floor 2 - Dining Area



Dimensions: 9'9" x 13'8"
Area: 133 sq. ft
Counted as living area: Yes

Heated: Yes
Finished: Yes
Enclosed: Yes
Contiguous: Yes
Permitted: Yes
Wet space: No
Addition: No
Conversion: No

10 Floor 2 - Pantry



Dimensions: 3'10" x 1'4"
Area: 5 sq. ft
Counted as living area: Yes

Heated: Yes
Finished: Yes
Enclosed: Yes
Contiguous: Yes
Permitted: Yes
Wet space: No
Addition: No
Conversion: No

11 Floor 2 - Kitchen



Dimensions: 14'9" x 13'8"
Area: 201 sq. ft
Counted as living area: Yes

Heated: Yes
Finished: Yes
Enclosed: Yes
Contiguous: Yes
Permitted: Yes
Wet space: No
Addition: No
Conversion: No

23 Chilton Avenue, Rocky Nook Park, Kingston, Plymouth County, Massachusetts, United States, 02364

12 Floor 2 - Living Room



Dimensions: 13'1" x 23'1"
Area: 303 sq. ft
Counted as living area: Yes

Heated: Yes
Finished: Yes
Enclosed: Yes
Contiguous: Yes
Permitted: Yes
Wet space: No
Addition: No
Conversion: No

13 Floor 2 - Foyer



Dimensions: 11'4" x 14'8"
Area: 116 sq. ft
Counted as living area: Yes

Heated: Yes
Finished: Yes
Enclosed: Yes
Contiguous: Yes
Permitted: Yes
Wet space: No
Addition: No
Conversion: No

14 Floor 2 - Bath



Dimensions: 3'10" x 7'10"
Area: 30 sq. ft
Counted as living area: Yes

Heated: Yes
Finished: Yes
Enclosed: Yes
Contiguous: Yes
Permitted: Yes
Wet space: Yes
Addition: No
Conversion: No

23 Chilton Avenue, Rocky Nook Park, Kingston, Plymouth County, Massachusetts, United States, 02364

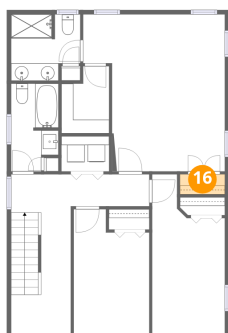
15 Floor 2 - Porch



Dimensions: 25'6" x 5'11"
Area: 151 sq. ft
Counted as living area: No

Heated: No
Finished: No
Enclosed: No
Contiguous: Yes
Permitted: Yes
Wet space: No
Addition: No
Conversion: No

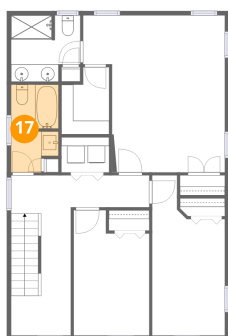
16 Floor 3 - W.I.C.



Dimensions: 5'2" x 2'3"
Area: 12 sq. ft
Counted as living area: Yes

Heated: Yes
Finished: Yes
Enclosed: Yes
Contiguous: Yes
Permitted: Yes
Wet space: No
Addition: No
Conversion: No

17 Floor 3 - Bath

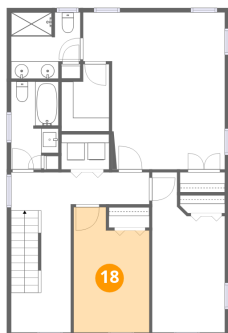


Dimensions: 5'5" x 10'1"
Area: 50 sq. ft
Counted as living area: Yes

Heated: Yes
Finished: Yes
Enclosed: Yes
Contiguous: Yes
Permitted: Yes
Wet space: Yes
Addition: No
Conversion: No

23 Chilton Avenue, Rocky Nook Park, Kingston, Plymouth County, Massachusetts, United States, 02364

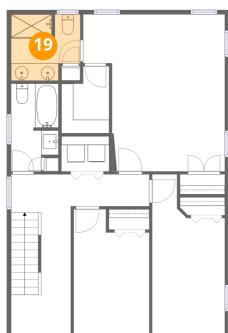
18 Floor 3 - Bedroom



Dimensions: 8'8" x 14'4"
Area: 111 sq. ft
Counted as living area: Yes

Heated: Yes
Finished: Yes
Enclosed: Yes
Contiguous: Yes
Permitted: Yes
Wet space: No
Addition: No
Conversion: No

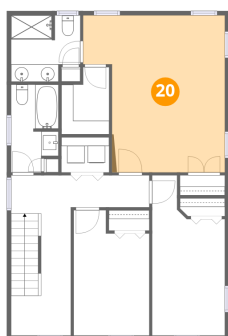
19 Floor 3 - Bath



Dimensions: 7'11" x 7'7"
Area: 54 sq. ft
Counted as living area: Yes

Heated: Yes
Finished: Yes
Enclosed: Yes
Contiguous: Yes
Permitted: Yes
Wet space: Yes
Addition: No
Conversion: No

20 Floor 3 - Primary Bedroom

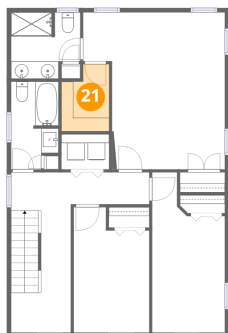


Dimensions: 16'3" x 18'0"
Area: 252 sq. ft
Counted as living area: Yes

Heated: Yes
Finished: Yes
Enclosed: Yes
Contiguous: Yes
Permitted: Yes
Wet space: No
Addition: No
Conversion: No

23 Chilton Avenue, Rocky Nook Park, Kingston, Plymouth County, Massachusetts, United States, 02364

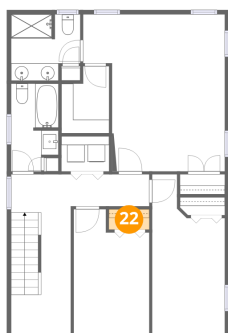
21 Floor 3 - W.I.C.



Dimensions: 5'6" x 7'8"
Area: 37 sq. ft
Counted as living area: Yes

Heated: Yes
Finished: Yes
Enclosed: Yes
Contiguous: Yes
Permitted: Yes
Wet space: No
Addition: No
Conversion: No

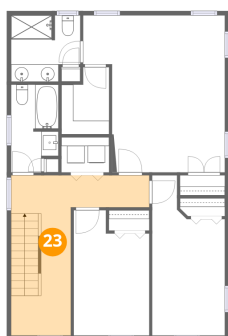
22 Floor 3 - W.I.C.



Dimensions: 4'8" x 2'4"
Area: 11 sq. ft
Counted as living area: Yes

Heated: Yes
Finished: Yes
Enclosed: Yes
Contiguous: Yes
Permitted: Yes
Wet space: No
Addition: No
Conversion: No

23 Floor 3 - Hall

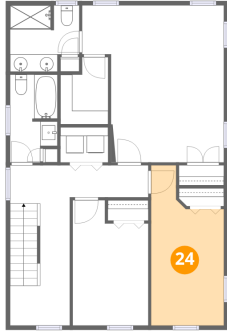


Dimensions: 15'10" x 18'4"
Area: 159 sq. ft
Counted as living area: Yes

Heated: Yes
Finished: Yes
Enclosed: Yes
Contiguous: Yes
Permitted: Yes
Wet space: No
Addition: No
Conversion: No

23 Chilton Avenue, Rocky Nook Park, Kingston, Plymouth County, Massachusetts, United States, 02364

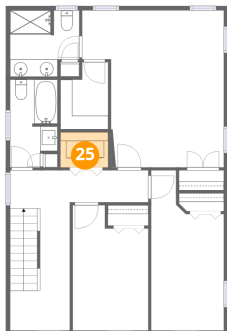
24 Floor 3 - Bedroom



Dimensions: 8'4" x 18'4"
Area: 126 sq. ft
Counted as living area: Yes

Heated: Yes
Finished: Yes
Enclosed: Yes
Contiguous: Yes
Permitted: Yes
Wet space: No
Addition: No
Conversion: No

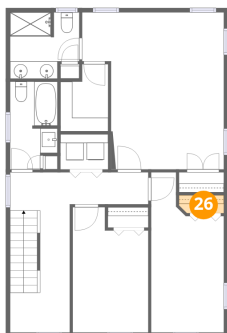
25 Floor 3 - Laundry



Dimensions: 5'6" x 4'0"
Area: 22 sq. ft
Counted as living area: Yes

Heated: Yes
Finished: Yes
Enclosed: Yes
Contiguous: Yes
Permitted: Yes
Wet space: No
Addition: No
Conversion: No

26 Floor 3 - W.I.C.

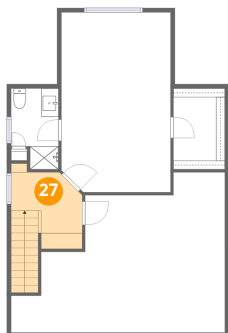


Dimensions: 5'2" x 2'1"
Area: 10 sq. ft
Counted as living area: Yes

Heated: Yes
Finished: Yes
Enclosed: Yes
Contiguous: Yes
Permitted: Yes
Wet space: No
Addition: No
Conversion: No

23 Chilton Avenue, Rocky Nook Park, Kingston, Plymouth County, Massachusetts, United States, 02364

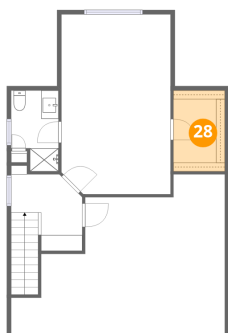
27 Floor 4 - Hall



Dimensions: 8'2" x 8'9"
Area: 85 sq. ft
Counted as living area: Yes

Heated: Yes
Finished: Yes
Enclosed: Yes
Contiguous: Yes
Permitted: Yes
Wet space: No
Addition: No
Conversion: No

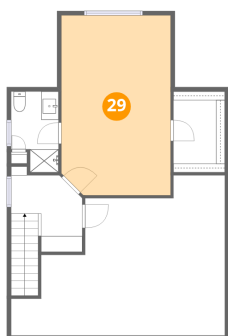
28 Floor 4 - W.I.C.



Dimensions: 5'11" x 9'3"
Area: 55 sq. ft
Counted as living area: Yes

Heated: Yes
Finished: Yes
Enclosed: Yes
Contiguous: Yes
Permitted: Yes
Wet space: No
Addition: No
Conversion: No

29 Floor 4 - Bedroom

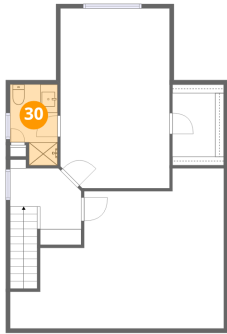


Dimensions: 12'6" x 20'8"
Area: 255 sq. ft
Counted as living area: Yes

Heated: Yes
Finished: Yes
Enclosed: Yes
Contiguous: Yes
Permitted: Yes
Wet space: No
Addition: No
Conversion: No

23 Chilton Avenue, Rocky Nook Park, Kingston, Plymouth County, Massachusetts, United States, 02364

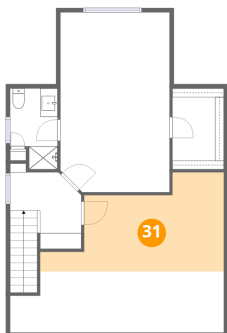
30 Floor 4 - Bath



Dimensions: 5'5" x 9'3"
Area: 45 sq. ft
Counted as living area: Yes

Heated: Yes
Finished: Yes
Enclosed: Yes
Contiguous: Yes
Permitted: Yes
Wet space: Yes
Addition: No
Conversion: No

31 Floor 4 - Attic



Dimensions: 21'1" x 11'5"
Area: 167 sq. ft
Counted as living area: No

Heated: No
Finished: No
Enclosed: Yes
Contiguous: Yes
Permitted: Yes
Wet space: No
Addition: No
Conversion: No