

# CENTURY 21.

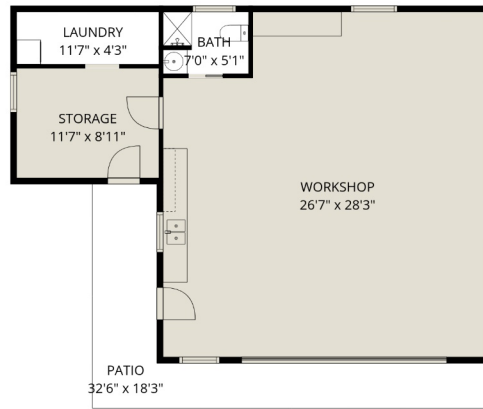
Creekside Realty Ltd.

# 6464 Reid Rd

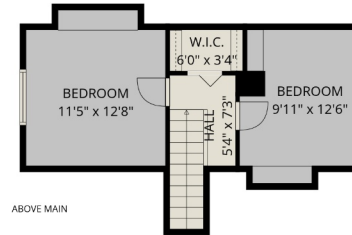
Kasey Longmuir

604-845-2477

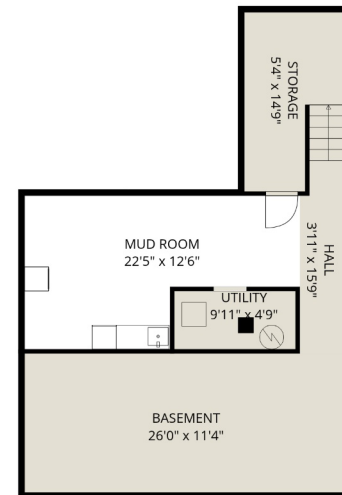
kasey.longmuir@century21.ca



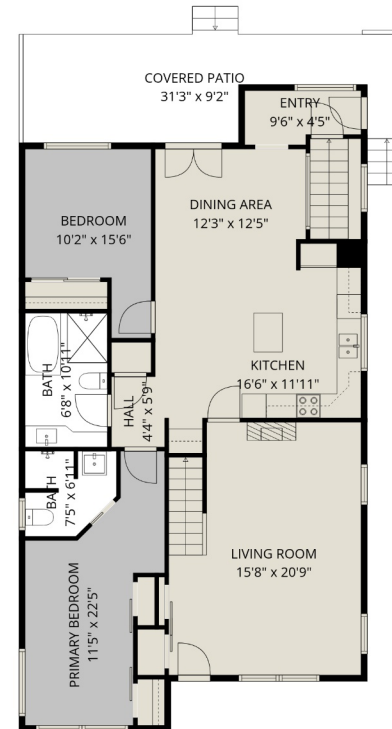
WORKSHOP



ABOVE MAIN



BELOW MAIN



MAIN FLOOR

## Estimated Areas:

Below Main: 830 (328 sq. ft unfinished)

Main Floor: 1347 sq. ft

Above Main: 383 sq. ft

**Total: 2560 Sq. Ft (328 Sq. Ft Unfinished)**

## Additional Areas:

Workshop: 978 sq. ft

**CENTURY 21.**

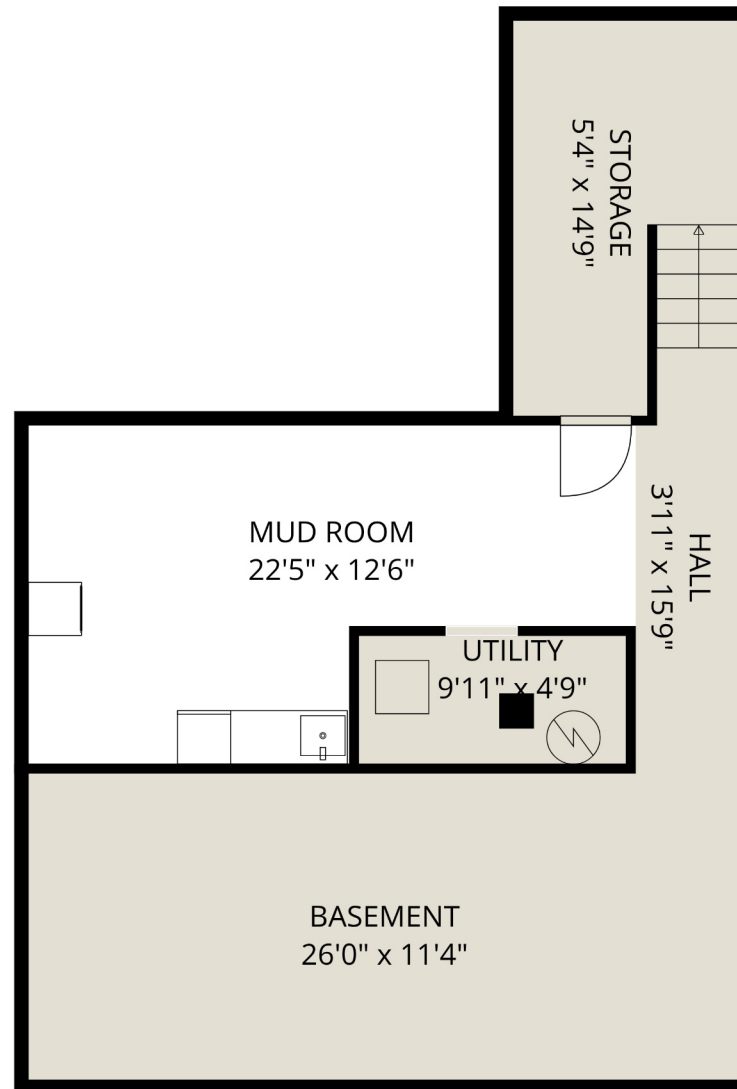
Creekside Realty Ltd.

**6464 Reid Rd**

Kasey Longmuir

604-845-2477

kasey.longmuir@century21.ca



**Estimated Areas:**

Below Main: 830 (328 sq. ft unfinished)

Main Floor: 1347 sq. ft

Above Main: 383 sq. ft

**Total: 2560 Sq. Ft (328 Sq. Ft Unfinished)**

**Additional Areas:**

Workshop: 978 sq. ft

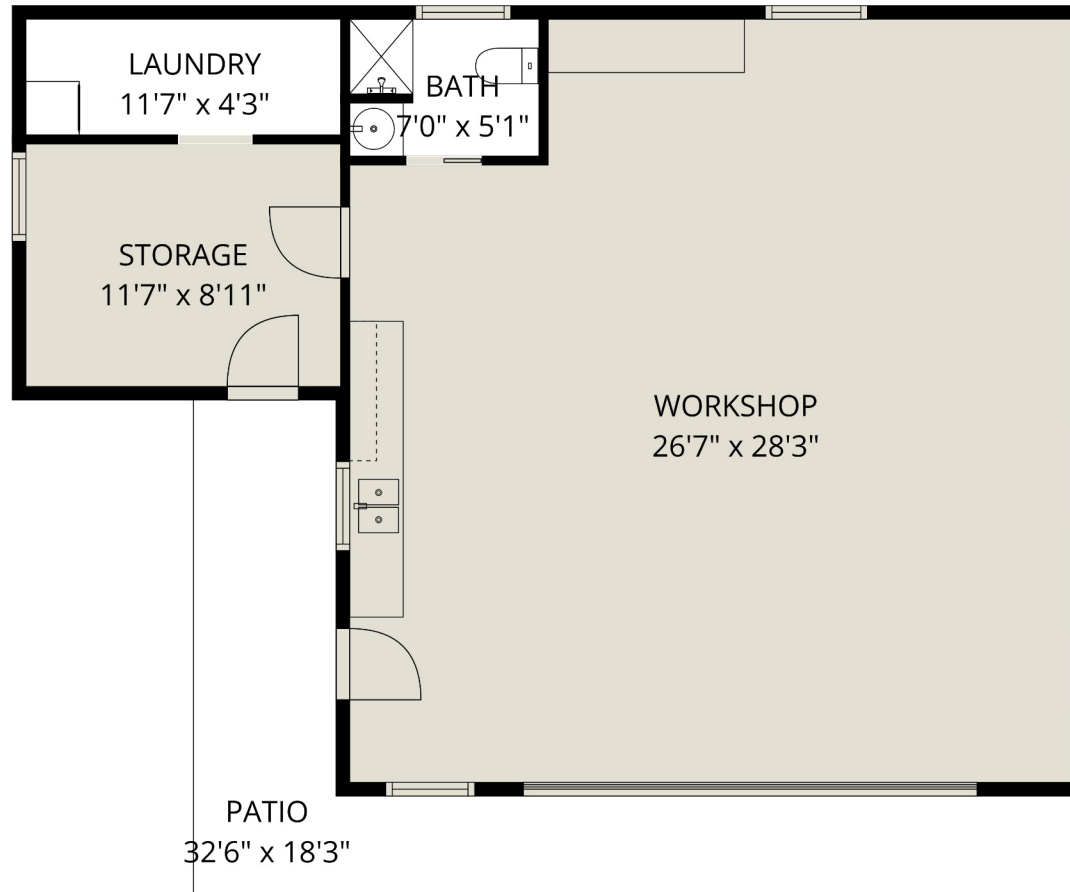
**CENTURY 21.**

Creekside Realty Ltd.

**6464 Reid Rd**

Kasey Longmuir  
604-845-2477

kasey.longmuir@century21.ca



**Estimated Areas:**

Below Main: 830 (328 sq. ft unfinished)

Main Floor: 1347 sq. ft

Above Main: 383 sq. ft

**Total: 2560 Sq. Ft (328 Sq. Ft Unfinished)**

**Additional Areas:**

Workshop: 978 sq. ft

**CENTURY 21.**

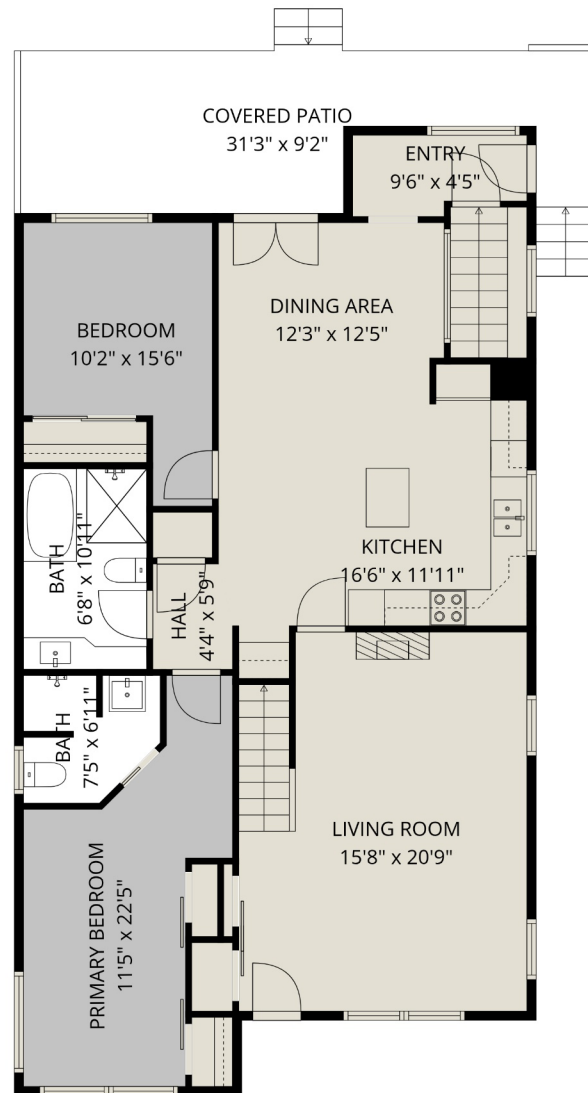
Creekside Realty Ltd.

**6464 Reid Rd**

Kasey Longmuir

604-845-2477

kasey.longmuir@century21.ca



**Estimated Areas:**

Below Main: 830 (328 sq. ft unfinished)

Main Floor: 1347 sq. ft

Above Main: 383 sq. ft

**Total: 2560 Sq. Ft (328 Sq. Ft Unfinished)**

**Additional Areas:**

Workshop: 978 sq. ft

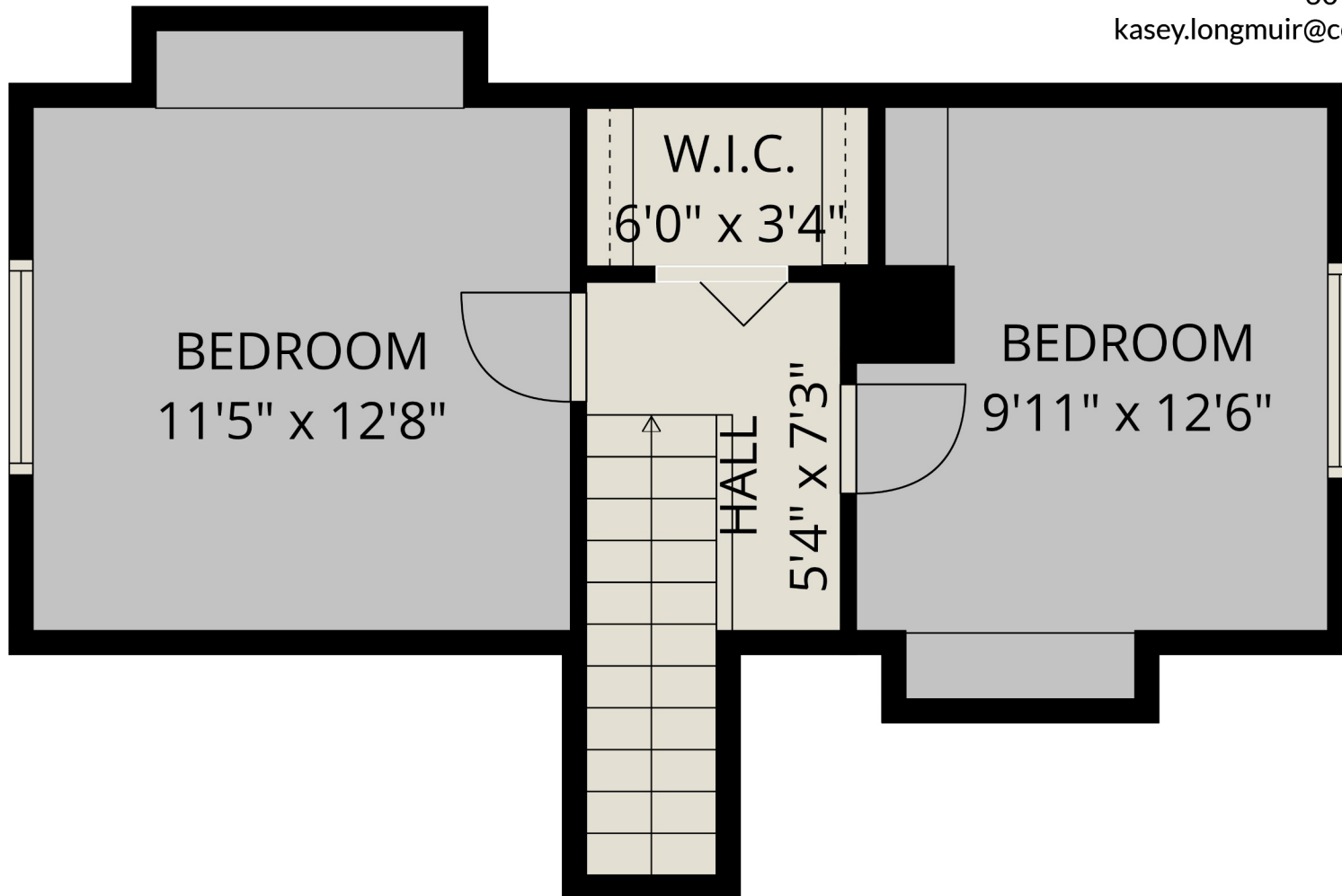
**CENTURY 21.**

Creekside Realty Ltd.

**6464 Reid Rd**

Kasey Longmuir  
604-845-2477

kasey.longmuir@century21.ca



**Estimated Areas:**

Below Main: 830 (328 sq. ft unfinished)

Main Floor: 1347 sq. ft

Above Main: 383 sq. ft

**Total: 2560 Sq. Ft (328 Sq. Ft Unfinished)**

**Additional Areas:**

Workshop: 978 sq. ft

Measurements and plans provided by:  
**SPOTLIGHT MEDIA**

E&O Insured. For advertising purposes only. Not intended for architectural or construction use. Floorplan and measurements are approximate within +/- 2% tolerance.