

## Home data report

7587 Salmon Creek Road, Williamson, New York 14589, United States



**Total Area: 1396 sq. ft**

Basement: 0 sq. ft, 1st Floor: 1396 sq. ft

Excluded: Basement 1389 sq. ft, Garage 554 sq. ft, Deck 186 sq. ft, Walls: 214 sq. ft

## Property summary



Scan captured on Tue, 16 Jun 2026 17:21:36 GMT

NOTE: Interior wall dimensions will be smaller than outer wall build dimensions.

Home data report

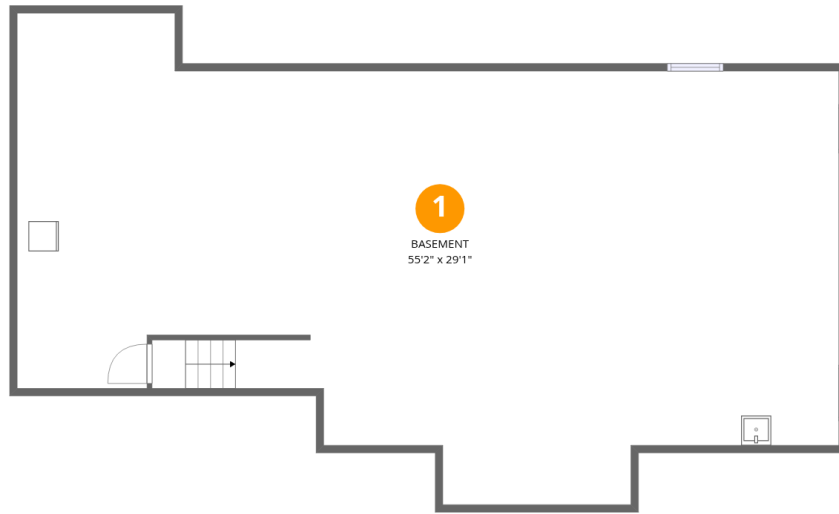
# 7587 Salmon Creek Road, Williamson, New York 14589, United States

 **1**  
Half baths

 **1**  
Garages

Home data report

7587 Salmon Creek Road, Williamson, New York 14589, United States



## Room dimensions

Floor 1 Below grade

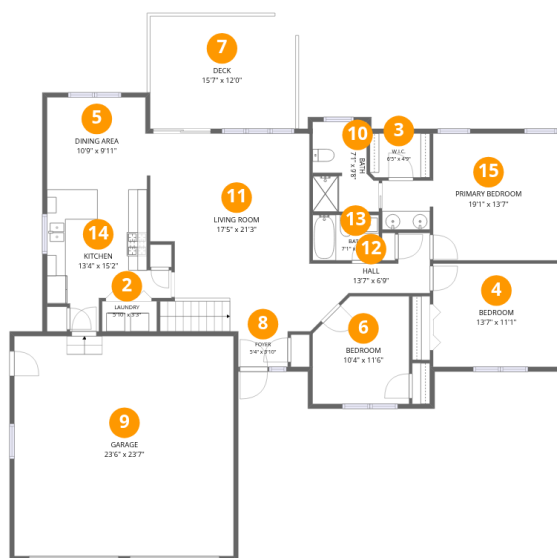
Total:0sqft

Excluded: 1389sqft

#		Dimensions	sqft	Counted as living area
1	Basement	55'2" x 29'1"	1384 sq. ft	No

## Home data report

7587 Salmon Creek Road, Williamson, New York 14589, United States



## Room dimensions

Floor 2

Total:1396sqft Excluded: 740sqft

#		Dimensions	sqft	Counted as living area
2	Laundry	5'10" x 3'3"	19 sq. ft	Yes
3	W.I.C.	6'5" x 4'9"	30 sq. ft	Yes
4	Bedroom	13'7" x 11'1"	150 sq. ft	Yes
5	Dining Area	10'9" x 9'11"	105 sq. ft	Yes
6	Bedroom	10'4" x 11'6"	111 sq. ft	Yes
7	Deck	15'7" x 12'0"	186 sq. ft	No
8	Foyer	5'4" x 3'10"	20 sq. ft	Yes
9	Garage	23'6" x 23'7"	554 sq. ft	No
10	Bath	7'1" x 9'8"	60 sq. ft	Yes
11	Living Room	17'5" x 21'3"	344 sq. ft	Yes
12	Hall	13'7" x 6'9"	61 sq. ft	Yes

Scan captured on Tue, 16 Jun 2026 17:21:36 GMT

NOTE: Interior wall dimensions will be smaller than outer wall build dimensions.

Home data report

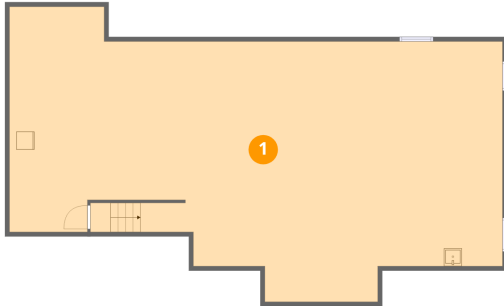
**7587 Salmon Creek Road, Williamson, New York 14589, United States**

#		Dimensions	sqft	Counted as living area
13	Bath	7'1" x 4'11"	35 sq. ft	Yes
14	Kitchen	13'4" x 15'2"	145 sq. ft	Yes
15	Primary Bedroom	19'1" x 13'7"	213 sq. ft	Yes

7587 Salmon Creek Road, Williamson, New York 14589, United States

**1** Floor 1 - Basement

---

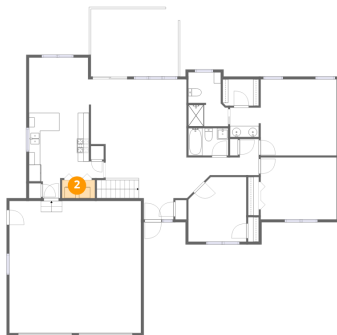


Dimensions: 55'2" x 29'1"  
Area: 1384 sq. ft  
Counted as living area: No

Heated: Yes  
Finished: No  
Enclosed: Yes  
Contiguous: Yes  
Permitted: Yes  
Wet space: No  
Addition: No  
Conversion: No

**2** Floor 2 - Laundry

---



Dimensions: 5'10" x 3'3"  
Area: 19 sq. ft  
Counted as living area: Yes

Heated: Yes  
Finished: Yes  
Enclosed: Yes  
Contiguous: Yes  
Permitted: Yes  
Wet space: No  
Addition: No  
Conversion: No

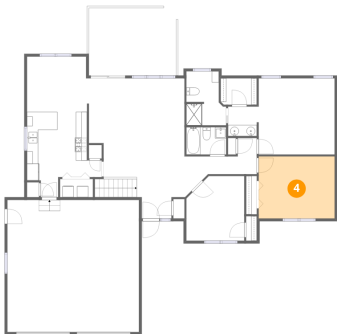
**3** Floor 2 - W.I.C.



Dimensions: 6'5" x 4'9"  
Area: 30 sq. ft  
Counted as living area: Yes

Heated: Yes  
Finished: Yes  
Enclosed: Yes  
Contiguous: Yes  
Permitted: Yes  
Wet space: No  
Addition: No  
Conversion: No

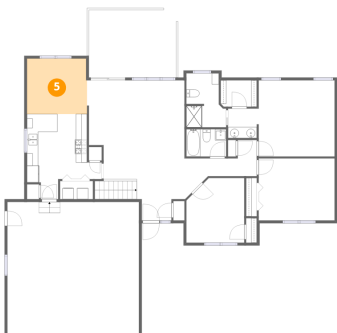
**4** Floor 2 - Bedroom



Dimensions: 13'7" x 11'1"  
Area: 150 sq. ft  
Counted as living area: Yes

Heated: Yes  
Finished: Yes  
Enclosed: Yes  
Contiguous: Yes  
Permitted: Yes  
Wet space: No  
Addition: No  
Conversion: No

**5** Floor 2 - Dining Area



Dimensions: 10'9" x 9'11"  
Area: 105 sq. ft  
Counted as living area: Yes

Heated: Yes  
Finished: Yes  
Enclosed: Yes  
Contiguous: Yes  
Permitted: Yes  
Wet space: No  
Addition: No  
Conversion: No

## 6 Floor 2 - Bedroom



Dimensions: 10'4" x 11'6"  
Area: 111 sq. ft  
Counted as living area: Yes

Heated: Yes  
Finished: Yes  
Enclosed: Yes  
Contiguous: Yes  
Permitted: Yes  
Wet space: No  
Addition: No  
Conversion: No

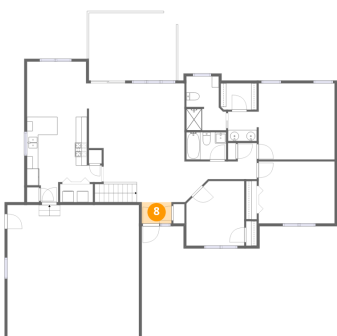
## 7 Floor 2 - Deck



Dimensions: 15'7" x 12'0"  
Area: 186 sq. ft  
Counted as living area: No

Heated: No  
Finished: No  
Enclosed: No  
Contiguous: Yes  
Permitted: Yes  
Wet space: No  
Addition: No  
Conversion: No

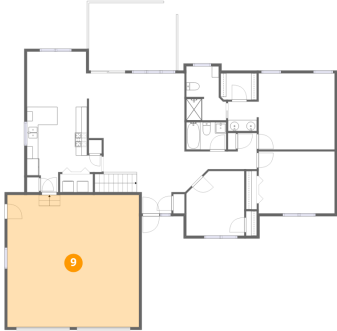
## 8 Floor 2 - Foyer



Dimensions: 5'4" x 3'10"  
Area: 20 sq. ft  
Counted as living area: Yes

Heated: Yes  
Finished: Yes  
Enclosed: Yes  
Contiguous: Yes  
Permitted: Yes  
Wet space: No  
Addition: No  
Conversion: No

## 9 Floor 2 - Garage



Dimensions: 23'6" x 23'7"  
Area: 554 sq. ft  
Counted as living area: No

Heated: No  
Finished: No  
Enclosed: Yes  
Contiguous: Yes  
Permitted: Yes  
Wet space: No  
Addition: No  
Conversion: No

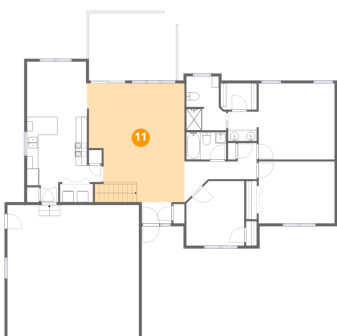
## 10 Floor 2 - Bath



Dimensions: 7'1" x 9'8"  
Area: 60 sq. ft  
Counted as living area: Yes

Heated: Yes  
Finished: Yes  
Enclosed: Yes  
Contiguous: Yes  
Permitted: Yes  
Wet space: Yes  
Addition: No  
Conversion: No

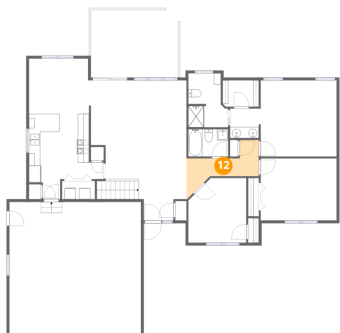
## 11 Floor 2 - Living Room



Dimensions: 17'5" x 21'3"  
Area: 344 sq. ft  
Counted as living area: Yes

Heated: Yes  
Finished: Yes  
Enclosed: Yes  
Contiguous: Yes  
Permitted: Yes  
Wet space: No  
Addition: No  
Conversion: No

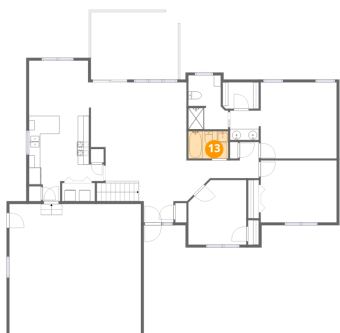
## 12 Floor 2 - Hall



Dimensions: 13'7" x 6'9"  
Area: 61 sq. ft  
Counted as living area: Yes

Heated: Yes  
Finished: Yes  
Enclosed: Yes  
Contiguous: Yes  
Permitted: Yes  
Wet space: No  
Addition: No  
Conversion: No

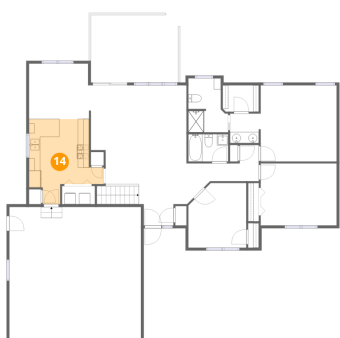
## 13 Floor 2 - Bath



Dimensions: 7'1" x 4'11"  
Area: 35 sq. ft  
Counted as living area: Yes

Heated: Yes  
Finished: Yes  
Enclosed: Yes  
Contiguous: Yes  
Permitted: Yes  
Wet space: Yes  
Addition: No  
Conversion: No

## 14 Floor 2 - Kitchen

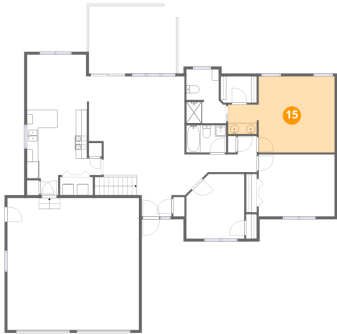


Dimensions: 13'4" x 15'2"  
Area: 145 sq. ft  
Counted as living area: Yes

Heated: Yes  
Finished: Yes  
Enclosed: Yes  
Contiguous: Yes  
Permitted: Yes  
Wet space: No  
Addition: No  
Conversion: No

**15** Floor 2 - Primary Bedroom

---



**Dimensions:** 19'1" x 13'7"

**Area:** 213 sq. ft

**Counted as living area:** Yes

**Heated:** Yes

**Finished:** Yes

**Enclosed:** Yes

**Contiguous:** Yes

**Permitted:** Yes

**Wet space:** No

**Addition:** No

**Conversion:** No