

Home data report

4606 Stoney Creek court, Granbury, Hood County, Texas, United States, 76049



Total Area: 2230 sq. ft

1st Floor: 2230 sq. ft

Excluded: Garage 604 sq. ft, Walls: 158 sq. ft

Property summary

 **1** Floors

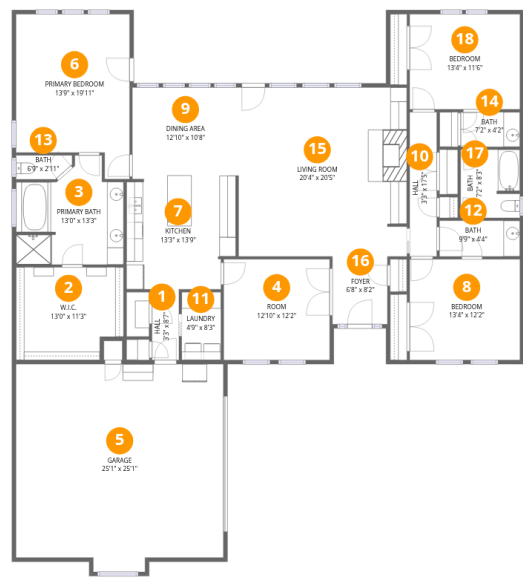
 **3** Bedrooms

 **2** Bathrooms

 **1** Garages

Home data report

4606 Stoney Creek court, Granbury, Hood County, Texas, United States, 76049



Room dimensions

Floor 1

Total:2230sqft   Excluded: 604sqft

#		Dimensions	sqft	Counted as living area
1	Hall	3'3" x 8'7"	28 sq. ft	Yes
2	W.I.C.	13'0" x 11'3"	138 sq. ft	Yes
3	Primary Bath	13'0" x 13'3"	141 sq. ft	Yes
4	Room	12'10" x 12'2"	156 sq. ft	Yes
5	Garage	25'1" x 25'1"	598 sq. ft	No
6	Primary Bedroom	13'9" x 19'11"	240 sq. ft	Yes
7	Kitchen	13'3" x 13'9"	174 sq. ft	Yes
8	Bedroom	13'4" x 12'2"	163 sq. ft	Yes
9	Dining Area	12'10" x 10'8"	137 sq. ft	Yes
10	Hall	3'3" x 17'5"	57 sq. ft	Yes
11	Laundry	4'9" x 8'3"	39 sq. ft	Yes

## Home data report

**4606 Stoney Creek court, Granbury, Hood County, Texas, United States, 76049**

#		Dimensions	sqft	Counted as living area
12	Bath	9'9" x 4'4"	42 sq. ft	Yes
13	Bath	6'9" x 2'11"	18 sq. ft	Yes
14	Bath	7'2" x 4'2"	30 sq. ft	Yes
15	Living Room	20'4" x 20'5"	415 sq. ft	Yes
16	Foyer	6'8" x 8'2"	55 sq. ft	Yes
17	Bath	7'2" x 8'3"	58 sq. ft	Yes
18	Bedroom	13'4" x 11'6"	154 sq. ft	Yes

4606 Stoney Creek court, Granbury, Hood County, Texas, United States, 76049

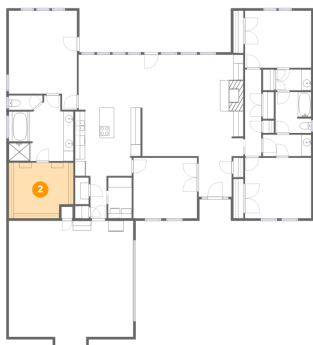
1 Floor 1 - Hall



Dimensions: 3'3" x 8'7"  
Area: 28 sq. ft  
Counted as living area: Yes

Heated: Yes  
Finished: Yes  
Enclosed: Yes  
Contiguous: Yes  
Permitted: Yes  
Wet space: No  
Addition: No  
Conversion: No

2 Floor 1 - W.I.C.

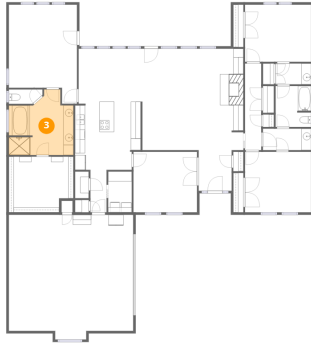


Dimensions: 13'0" x 11'3"  
Area: 138 sq. ft  
Counted as living area: Yes

Heated: Yes  
Finished: Yes  
Enclosed: Yes  
Contiguous: Yes  
Permitted: Yes  
Wet space: No  
Addition: No  
Conversion: No

4606 Stoney Creek court, Granbury, Hood County, Texas, United States, 76049

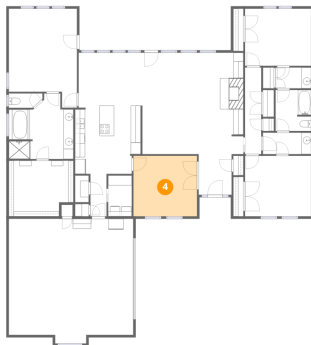
### 3 Floor 1 - Primary Bath



Dimensions: 13'0" x 13'3"  
Area: 141 sq. ft  
Counted as living area: Yes

Heated: Yes  
Finished: Yes  
Enclosed: Yes  
Contiguous: Yes  
Permitted: Yes  
Wet space: Yes  
Addition: No  
Conversion: No

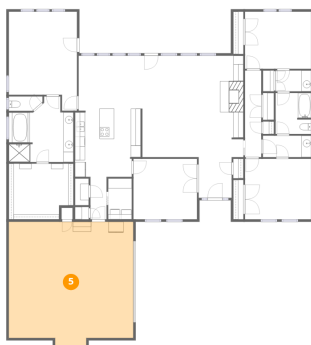
### 4 Floor 1 - Room



Dimensions: 12'10" x 12'2"  
Area: 156 sq. ft  
Counted as living area: Yes

Heated: Yes  
Finished: Yes  
Enclosed: Yes  
Contiguous: Yes  
Permitted: Yes  
Wet space: No  
Addition: No  
Conversion: No

### 5 Floor 1 - Garage

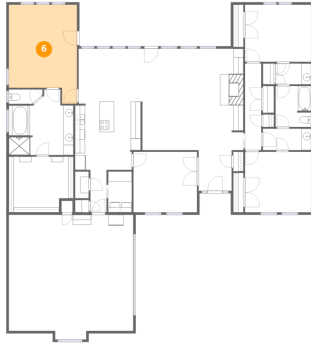


Dimensions: 25'1" x 25'1"  
Area: 598 sq. ft  
Counted as living area: No

Heated: No  
Finished: No  
Enclosed: Yes  
Contiguous: Yes  
Permitted: Yes  
Wet space: No  
Addition: No  
Conversion: No

4606 Stoney Creek court, Granbury, Hood County, Texas, United States, 76049

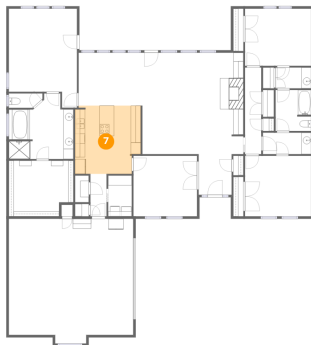
## 6 Floor 1 - Primary Bedroom



Dimensions: 13'9" x 19'11"  
Area: 240 sq. ft  
Counted as living area: Yes

Heated: Yes  
Finished: Yes  
Enclosed: Yes  
Contiguous: Yes  
Permitted: Yes  
Wet space: No  
Addition: No  
Conversion: No

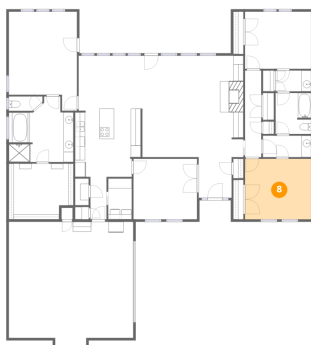
## 7 Floor 1 - Kitchen



Dimensions: 13'3" x 13'9"  
Area: 174 sq. ft  
Counted as living area: Yes

Heated: Yes  
Finished: Yes  
Enclosed: Yes  
Contiguous: Yes  
Permitted: Yes  
Wet space: No  
Addition: No  
Conversion: No

## 8 Floor 1 - Bedroom



Dimensions: 13'4" x 12'2"  
Area: 163 sq. ft  
Counted as living area: Yes

Heated: Yes  
Finished: Yes  
Enclosed: Yes  
Contiguous: Yes  
Permitted: Yes  
Wet space: No  
Addition: No  
Conversion: No

4606 Stoney Creek court, Granbury, Hood County, Texas, United States, 76049

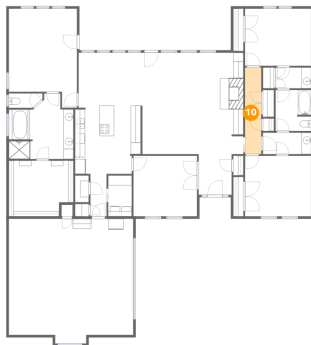
## 9 Floor 1 - Dining Area



Dimensions: 12'10" x 10'8"  
Area: 137 sq. ft  
Counted as living area: Yes

Heated: Yes  
Finished: Yes  
Enclosed: Yes  
Contiguous: Yes  
Permitted: Yes  
Wet space: No  
Addition: No  
Conversion: No

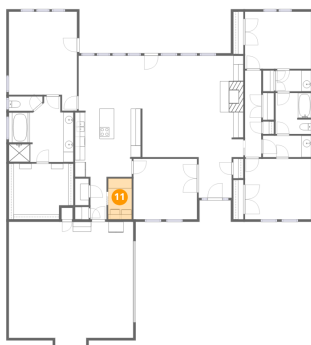
## 10 Floor 1 - Hall



Dimensions: 3'3" x 17'5"  
Area: 57 sq. ft  
Counted as living area: Yes

Heated: Yes  
Finished: Yes  
Enclosed: Yes  
Contiguous: Yes  
Permitted: Yes  
Wet space: No  
Addition: No  
Conversion: No

## 11 Floor 1 - Laundry



Dimensions: 4'9" x 8'3"  
Area: 39 sq. ft  
Counted as living area: Yes

Heated: Yes  
Finished: Yes  
Enclosed: Yes  
Contiguous: Yes  
Permitted: Yes  
Wet space: No  
Addition: No  
Conversion: No

4606 Stoney Creek court, Granbury, Hood County, Texas, United States, 76049

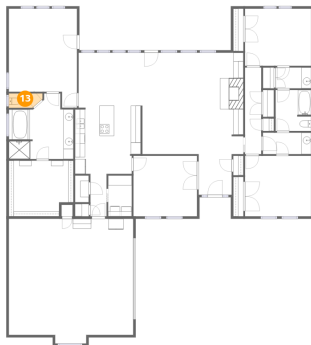
## 12 Floor 1 - Bath



Dimensions: 9'9" x 4'4"  
Area: 42 sq. ft  
Counted as living area: Yes

Heated: Yes  
Finished: Yes  
Enclosed: Yes  
Contiguous: Yes  
Permitted: Yes  
Wet space: Yes  
Addition: No  
Conversion: No

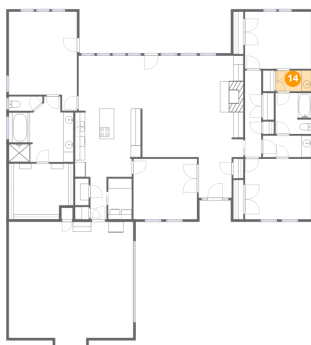
## 13 Floor 1 - Bath



Dimensions: 6'9" x 2'11"  
Area: 18 sq. ft  
Counted as living area: Yes

Heated: Yes  
Finished: Yes  
Enclosed: Yes  
Contiguous: Yes  
Permitted: Yes  
Wet space: Yes  
Addition: No  
Conversion: No

## 14 Floor 1 - Bath



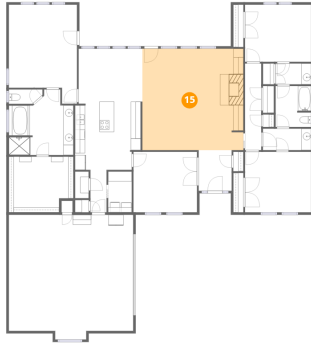
Dimensions: 7'2" x 4'2"  
Area: 30 sq. ft  
Counted as living area: Yes

Heated: Yes  
Finished: Yes  
Enclosed: Yes  
Contiguous: Yes  
Permitted: Yes  
Wet space: Yes  
Addition: No  
Conversion: No



4606 Stoney Creek court, Granbury, Hood County, Texas, United States, 76049

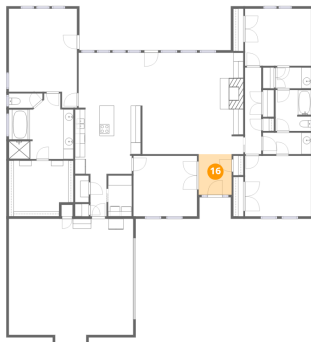
## 15 Floor 1 - Living Room



Dimensions: 20'4" x 20'5"  
Area: 415 sq. ft  
Counted as living area: Yes

Heated: Yes  
Finished: Yes  
Enclosed: Yes  
Contiguous: Yes  
Permitted: Yes  
Wet space: No  
Addition: No  
Conversion: No

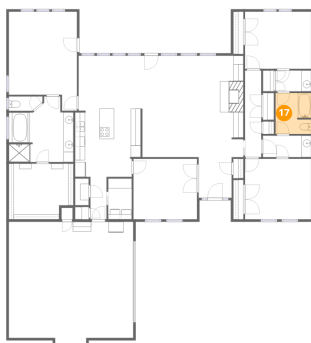
## 16 Floor 1 - Foyer



Dimensions: 6'8" x 8'2"  
Area: 55 sq. ft  
Counted as living area: Yes

Heated: Yes  
Finished: Yes  
Enclosed: Yes  
Contiguous: Yes  
Permitted: Yes  
Wet space: No  
Addition: No  
Conversion: No

## 17 Floor 1 - Bath



Dimensions: 7'2" x 8'3"  
Area: 58 sq. ft  
Counted as living area: Yes

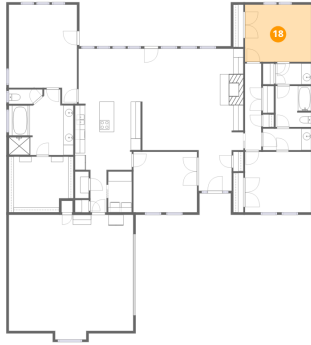
Heated: Yes  
Finished: Yes  
Enclosed: Yes  
Contiguous: Yes  
Permitted: Yes  
Wet space: Yes  
Addition: No  
Conversion: No

## Home data report

**4606 Stoney Creek court, Granbury, Hood County, Texas, United States, 76049**

### **18** Floor 1 - Bedroom

---



**Dimensions:** 13'4" x 11'6"  
**Area:** 154 sq. ft  
**Counted as living area:** Yes

**Heated:** Yes  
**Finished:** Yes  
**Enclosed:** Yes  
**Contiguous:** Yes  
**Permitted:** Yes  
**Wet space:** No  
**Addition:** No  
**Conversion:** No