

Home report

1346 Crushed Apple Drive, Martinsburg, Berkeley County, West Virginia, United States, 25403



**Total Area: 3233 sq. ft**

Below Ground: 36 sq. ft, Floor 2: 1687 sq. ft, Floor 3: 1510 sq. ft

Excluded: Basement 1589 sq. ft, Garage 586 sq. ft, Balcony 86 sq. ft, Fireplace 17 sq. ft, Open to below 337 sq. ft, Walls: 322 sq. ft

Property summary

**3** Floors

**4** Bedrooms

**2** Bathrooms

Home report

**1346 Crushed Apple Drive, Martinsburg, Berkeley County, West Virginia, United States, 25403**



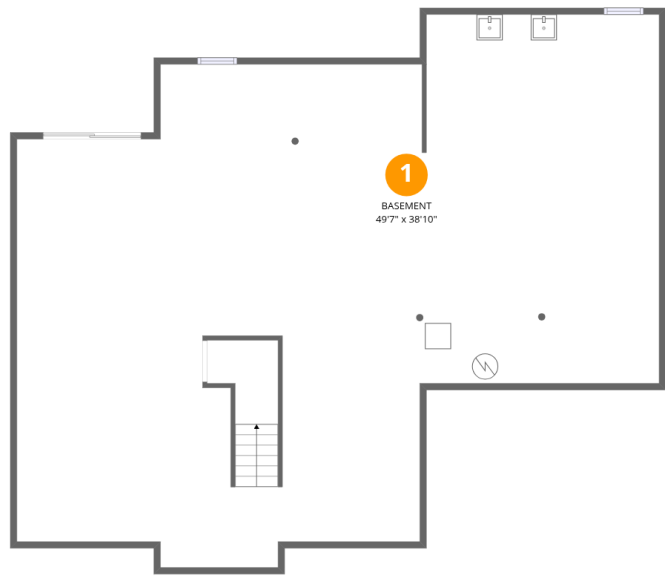
**1**  
Half baths



**1**  
Garages

Home report

1346 Crushed Apple Drive, Martinsburg, Berkeley County, West Virginia, United States, 25403



Room dimensions

Floor 1 Below ground Total:36sqft   Excluded: 1589sqft

#		Max Dimensions	sqft	Included
1	Basement	49'7" x 38'10"	1623 sq. ft	No

Home report

1346 Crushed Apple Drive, Martinsburg, Berkeley County, West Virginia, United States, 25403



Room dimensions

Floor 2

Total:1687sqft

Excluded: 689sqft

#		Max Dimensions	sqft	Included
2	Dining Room	10'9" x 15'9"	169 sq. ft	Yes
3	Balcony	7'4" x 11'8"	86 sq. ft	No
4	Foyer	9'5" x 17'11"	160 sq. ft	Yes
5	Pantry	4'1" x 4'3"	15 sq. ft	Yes
6	WC	3'0" x 5'8"	17 sq. ft	Yes
7	Hall	6'7" x 6'0"	30 sq. ft	Yes
8	Family Room	22'3" x 20'11"	444 sq. ft	Yes
9	Kitchen	19'11" x 14'8"	270 sq. ft	Yes
10	Living Room	10'7" x 15'7"	177 sq. ft	Yes
11	Laundry	7'1" x 5'8"	40 sq. ft	Yes
12	Breakfast Nook	20'6" x 7'10"	160 sq. ft	Yes

Home report

1346 Crushed Apple Drive, Martinsburg, Berkeley County, West Virginia, United States, 25403

#		Max Dimensions	sqft	Included
13	Office	10'9" x 15'0"	154 sq. ft	Yes
14	Garage	19'11" x 29'5"	586 sq. ft	No

Home report

1346 Crushed Apple Drive, Martinsburg, Berkeley County, West Virginia, United States, 25403



Room dimensions

Floor 3 Total:1510sqft Excluded: 337sqft

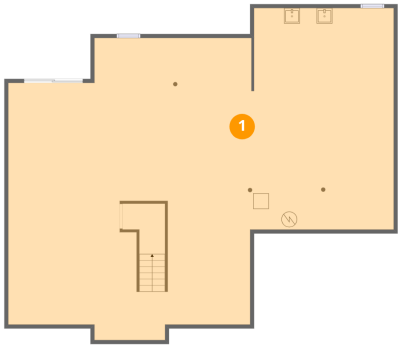
#		Max Dimensions	sqft	Included
15	Bedroom	13'3" x 13'1"	157 sq. ft	Yes
16	Primary Bedroom	19'1" x 32'8"	441 sq. ft	Yes
17	Hall	24'2" x 10'7"	216 sq. ft	Yes
18	W.I.C.	3'7" x 3'7"	11 sq. ft	Yes
19	W.I.C.	3'8" x 3'7"	13 sq. ft	Yes
20	Open To Below	20'0" x 13'9"	239 sq. ft	No
21	Primary Bath	10'8" x 9'11"	106 sq. ft	Yes
22	Open To Below	9'1" x 13'11"	98 sq. ft	No
23	W.I.C.	4'11" x 5'7"	27 sq. ft	Yes
24	Bath	5'2" x 7'11"	41 sq. ft	Yes
25	W.I.C.	5'1" x 5'9"	29 sq. ft	Yes

Home report

1346 Crushed Apple Drive, Martinsburg, Berkeley County, West Virginia, United States, 25403

#		Max Dimensions	sqft	Included
26	W.I.C.	5'11" x 9'10"	63 sq. ft	Yes
27	Bedroom	10'8" x 15'6"	165 sq. ft	Yes
28	Bedroom	10'9" x 15'7"	155 sq. ft	Yes

1 Floor 1 - Basement



Max Dimensions: 49'7" x 38'10"  
Calculated Area: 1623 sq. ft  
Included: No

Heated: Yes  
Finished: No  
Enclosed: Yes  
Contiguous: Yes  
Permitted: Yes  
Wet space: No  
Addition: No  
Conversion: No

2 Floor 2 - Dining Room



Max Dimensions: 10'9" x 15'9"  
Calculated Area: 169 sq. ft  
Included: Yes

Heated: Yes  
Finished: Yes  
Enclosed: Yes  
Contiguous: Yes  
Permitted: Yes  
Wet space: No  
Addition: No  
Conversion: No



3 Floor 2 - Balcony



Max Dimensions: 7'4" x 11'8"  
Calculated Area: 86 sq. ft  
Included: No

Heated: No  
Finished: No  
Enclosed: No  
Contiguous: Yes  
Permitted: Yes  
Wet space: No  
Addition: No  
Conversion: No

4 Floor 2 - Foyer



Max Dimensions: 9'5" x 17'11"  
Calculated Area: 160 sq. ft  
Included: Yes

Heated: Yes  
Finished: Yes  
Enclosed: Yes  
Contiguous: Yes  
Permitted: Yes  
Wet space: No  
Addition: No  
Conversion: No

5 Floor 2 - Pantry



Max Dimensions: 4'1" x 4'3"  
Calculated Area: 15 sq. ft  
Included: Yes

Heated: Yes  
Finished: Yes  
Enclosed: Yes  
Contiguous: Yes  
Permitted: Yes  
Wet space: No  
Addition: No  
Conversion: No

6 Floor 2 - WC



Max Dimensions: 3'0" x 5'8"  
Calculated Area: 17 sq. ft  
Included: Yes

Heated: Yes  
Finished: Yes  
Enclosed: Yes  
Contiguous: Yes  
Permitted: Yes  
Wet space: Yes  
Addition: No  
Conversion: No

7 Floor 2 - Hall



Max Dimensions: 6'7" x 6'0"  
Calculated Area: 30 sq. ft  
Included: Yes

Heated: Yes  
Finished: Yes  
Enclosed: Yes  
Contiguous: Yes  
Permitted: Yes  
Wet space: No  
Addition: No  
Conversion: No

8 Floor 2 - Family Room



Max Dimensions: 22'3" x 20'11"  
Calculated Area: 444 sq. ft  
Included: Yes

Heated: Yes  
Finished: Yes  
Enclosed: Yes  
Contiguous: Yes  
Permitted: Yes  
Wet space: No  
Addition: No  
Conversion: No

1346 Crushed Apple Drive, Martinsburg, Berkeley County, West Virginia, United States, 25403

## 9 Floor 2 - Kitchen



Max Dimensions: 19'11" x 14'8"  
Calculated Area: 270 sq. ft  
Included: Yes

Heated: Yes  
Finished: Yes  
Enclosed: Yes  
Contiguous: Yes  
Permitted: Yes  
Wet space: No  
Addition: No  
Conversion: No

## 10 Floor 2 - Living Room



Max Dimensions: 10'7" x 15'7"  
Calculated Area: 177 sq. ft  
Included: Yes

Heated: Yes  
Finished: Yes  
Enclosed: Yes  
Contiguous: Yes  
Permitted: Yes  
Wet space: No  
Addition: No  
Conversion: No

## 11 Floor 2 - Laundry



Max Dimensions: 7'1" x 5'8"  
Calculated Area: 40 sq. ft  
Included: Yes

Heated: Yes  
Finished: Yes  
Enclosed: Yes  
Contiguous: Yes  
Permitted: Yes  
Wet space: No  
Addition: No  
Conversion: No

12 Floor 2 - Breakfast Nook



Max Dimensions: 20'6" x 7'10"  
Calculated Area: 160 sq. ft  
Included: Yes

Heated: Yes  
Finished: Yes  
Enclosed: Yes  
Contiguous: Yes  
Permitted: Yes  
Wet space: No  
Addition: No  
Conversion: No

13 Floor 2 - Office



Max Dimensions: 10'9" x 15'0"  
Calculated Area: 154 sq. ft  
Included: Yes

Heated: Yes  
Finished: Yes  
Enclosed: Yes  
Contiguous: Yes  
Permitted: Yes  
Wet space: No  
Addition: No  
Conversion: No

14 Floor 2 - Garage

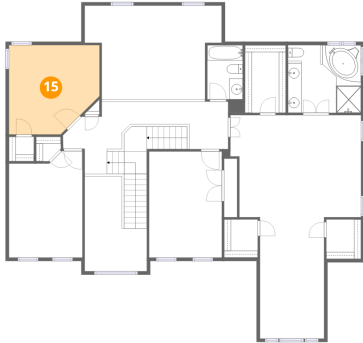


Max Dimensions: 19'11" x 29'5"  
Calculated Area: 586 sq. ft  
Included: No

Heated: No  
Finished: No  
Enclosed: Yes  
Contiguous: Yes  
Permitted: Yes  
Wet space: No  
Addition: No  
Conversion: No

1346 Crushed Apple Drive, Martinsburg, Berkeley County, West Virginia, United States, 25403

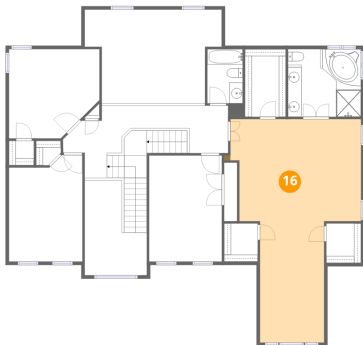
### 15 Floor 3 - Bedroom



Max Dimensions: 13'3" x 13'1"  
Calculated Area: 157 sq. ft  
Included: Yes

Heated: Yes  
Finished: Yes  
Enclosed: Yes  
Contiguous: Yes  
Permitted: Yes  
Wet space: No  
Addition: No  
Conversion: No

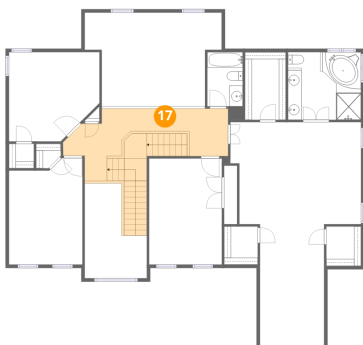
### 16 Floor 3 - Primary Bedroom



Max Dimensions: 19'1" x 32'8"  
Calculated Area: 441 sq. ft  
Included: Yes

Heated: Yes  
Finished: Yes  
Enclosed: Yes  
Contiguous: Yes  
Permitted: Yes  
Wet space: No  
Addition: No  
Conversion: No

### 17 Floor 3 - Hall



Max Dimensions: 24'2" x 10'7"  
Calculated Area: 216 sq. ft  
Included: Yes

Heated: Yes  
Finished: Yes  
Enclosed: Yes  
Contiguous: Yes  
Permitted: Yes  
Wet space: No  
Addition: No  
Conversion: No

18 Floor 3 - W.I.C.



Max Dimensions: 3'7" x 3'7"  
Calculated Area: 11 sq. ft  
Included: Yes

Heated: Yes  
Finished: Yes  
Enclosed: Yes  
Contiguous: Yes  
Permitted: Yes  
Wet space: No  
Addition: No  
Conversion: No

19 Floor 3 - W.I.C.



Max Dimensions: 3'8" x 3'7"  
Calculated Area: 13 sq. ft  
Included: Yes

Heated: Yes  
Finished: Yes  
Enclosed: Yes  
Contiguous: Yes  
Permitted: Yes  
Wet space: No  
Addition: No  
Conversion: No

20 Floor 3 - Open To Below



Max Dimensions: 20'0" x 13'9"  
Calculated Area: 239 sq. ft  
Included: No

Heated: No  
Finished: No  
Enclosed: No  
Contiguous: Yes  
Permitted: No  
Wet space: No  
Addition: No  
Conversion: No

1346 Crushed Apple Drive, Martinsburg, Berkeley County, West Virginia, United States, 25403

### 21 Floor 3 - Primary Bath



Max Dimensions: 10'8" x 9'11"  
Calculated Area: 106 sq. ft  
Included: Yes

Heated: Yes  
Finished: Yes  
Enclosed: Yes  
Contiguous: Yes  
Permitted: Yes  
Wet space: Yes  
Addition: No  
Conversion: No

### 22 Floor 3 - Open To Below



Max Dimensions: 9'1" x 13'11"  
Calculated Area: 98 sq. ft  
Included: No

Heated: No  
Finished: No  
Enclosed: No  
Contiguous: Yes  
Permitted: No  
Wet space: No  
Addition: No  
Conversion: No

### 23 Floor 3 - W.I.C.



Max Dimensions: 4'11" x 5'7"  
Calculated Area: 27 sq. ft  
Included: Yes

Heated: Yes  
Finished: Yes  
Enclosed: Yes  
Contiguous: Yes  
Permitted: Yes  
Wet space: No  
Addition: No  
Conversion: No

1346 Crushed Apple Drive, Martinsburg, Berkeley County, West Virginia, United States, 25403

### 24 Floor 3 - Bath



Max Dimensions: 5'2" x 7'11"  
Calculated Area: 41 sq. ft  
Included: Yes

Heated: Yes  
Finished: Yes  
Enclosed: Yes  
Contiguous: Yes  
Permitted: Yes  
Wet space: Yes  
Addition: No  
Conversion: No

### 25 Floor 3 - W.I.C.



Max Dimensions: 5'1" x 5'9"  
Calculated Area: 29 sq. ft  
Included: Yes

Heated: Yes  
Finished: Yes  
Enclosed: Yes  
Contiguous: Yes  
Permitted: Yes  
Wet space: No  
Addition: No  
Conversion: No

### 26 Floor 3 - W.I.C.



Max Dimensions: 5'11" x 9'10"  
Calculated Area: 63 sq. ft  
Included: Yes

Heated: Yes  
Finished: Yes  
Enclosed: Yes  
Contiguous: Yes  
Permitted: Yes  
Wet space: No  
Addition: No  
Conversion: No



27 Floor 3 - Bedroom



Max Dimensions: 10'8" x 15'6"  
Calculated Area: 165 sq. ft  
Included: Yes

Heated: Yes  
Finished: Yes  
Enclosed: Yes  
Contiguous: Yes  
Permitted: Yes  
Wet space: No  
Addition: No  
Conversion: No

28 Floor 3 - Bedroom



Max Dimensions: 10'9" x 15'7"  
Calculated Area: 155 sq. ft  
Included: Yes

Heated: Yes  
Finished: Yes  
Enclosed: Yes  
Contiguous: Yes  
Permitted: Yes  
Wet space: No  
Addition: No  
Conversion: No