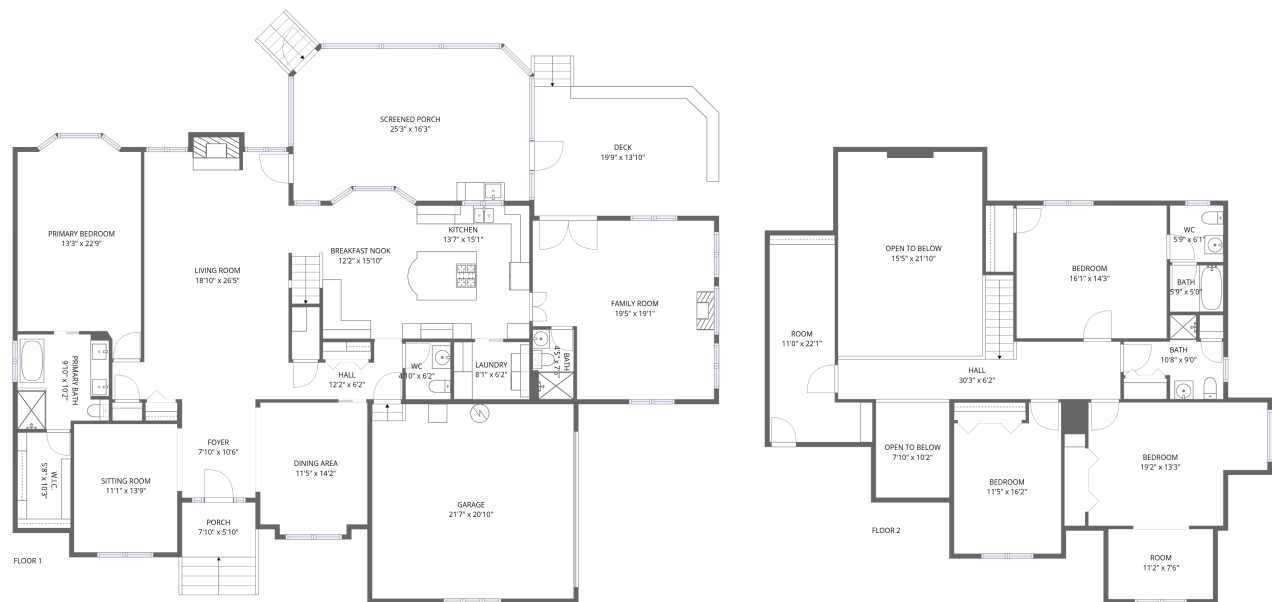


Home report

6001 Harbourwood Court, Brandermill, Midlothian, Chesterfield
County, Virginia, United States, 23112



Total Area: 3562 sq. ft
Floor 1: 2222 sq. ft, Floor 2: 1340 sq. ft
Excluded: Garage 449 sq. ft, Screened porch 392 sq. ft, Porch 78 sq. ft, Deck 282 sq. ft, Fireplace 10 sq. ft, Open to below 418 sq. ft, Walls: 275 sq. ft

Property summary

 **2** Floors

 **4** Bedrooms

 **4** Bathrooms

Home report

**6001 Harbourwood Court, Brandermill, Midlothian, Chesterfield
County, Virginia, United States, 23112**



1
Half baths



1
Garages

Home report

6001 Harbourwood Court, Brandermill, Midlothian, Chesterfield County, Virginia, United States, 23112



Room dimensions

Floor 1 Total:2222sqft Excluded: 1211sqft

#		Max Dimensions	sqft	Included
1	Garage	21'7" x 20'10"	449 sq. ft	No
2	Foyer	7'10" x 10'6"	83 sq. ft	Yes
3	Deck	19'9" x 13'10"	282 sq. ft	No
4	Screened Porch	25'3" x 16'3"	392 sq. ft	No
5	Bath	4'5" x 7'6"	33 sq. ft	Yes
6	Kitchen	13'7" x 15'1"	194 sq. ft	Yes
7	Sitting Room	11'1" x 13'9"	152 sq. ft	Yes
8	Laundry	8'1" x 6'2"	50 sq. ft	Yes
9	Primary Bath	9'10" x 10'2"	95 sq. ft	Yes
10	Breakfast Nook	12'2" x 15'10"	168 sq. ft	Yes
11	Primary Bedroom	13'3" x 22'9"	273 sq. ft	Yes

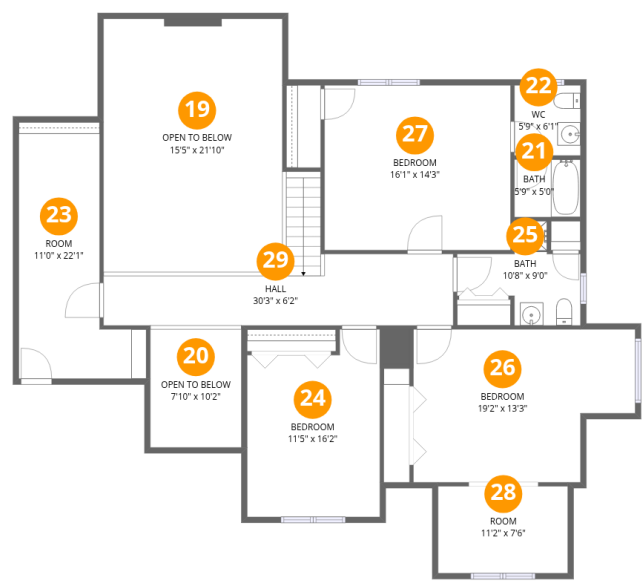
Home report

6001 Harbourwood Court, Brandermill, Midlothian, Chesterfield County, Virginia, United States, 23112

#		Max Dimensions	sqft	Included
12	W.I.C.	5'8" x 10'3"	58 sq. ft	Yes
13	Hall	12'2" x 6'2"	55 sq. ft	Yes
14	WC	4'10" x 6'2"	30 sq. ft	Yes
15	Dining Area	11'5" x 14'2"	157 sq. ft	Yes
16	Living Room	18'10" x 26'5"	430 sq. ft	Yes
17	Family Room	19'5" x 19'1"	334 sq. ft	Yes
18	Porch	7'10" x 5'10"	78 sq. ft	No

Home report

6001 Harbourwood Court, Brandermill, Midlothian, Chesterfield County, Virginia, United States, 23112

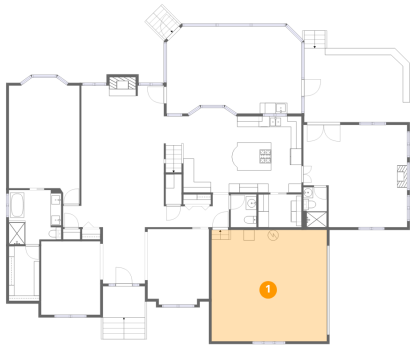


Room dimensions

Floor 2 Total:1340sqft Excluded: 418sqft

#		Max Dimensions	sqft	Included
19	Open To Below	15'5" x 21'10"	338 sq. ft	No
20	Open To Below	7'10" x 10'2"	80 sq. ft	No
21	Bath	5'9" x 5'0"	28 sq. ft	Yes
22	WC	5'9" x 6'1"	35 sq. ft	Yes
23	Room	11'0" x 22'1"	172 sq. ft	Yes
24	Bedroom	11'5" x 16'2"	168 sq. ft	Yes
25	Bath	10'8" x 9'0"	61 sq. ft	Yes
26	Bedroom	19'2" x 13'3"	225 sq. ft	Yes
27	Bedroom	16'1" x 14'3"	229 sq. ft	Yes
28	Room	11'2" x 7'6"	84 sq. ft	Yes
29	Hall	30'3" x 6'2"	188 sq. ft	Yes

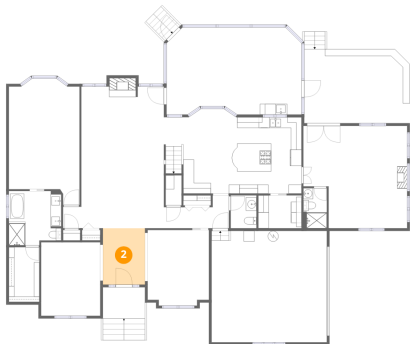
1 Floor 1 - Garage



Max Dimensions: 21'7" x 20'10"
Calculated Area: 449 sq. ft
Included: No

Heated: No
Finished: No
Enclosed: Yes
Contiguous: Yes
Permitted: Yes
Wet space: No
Addition: No
Conversion: No

2 Floor 1 - Foyer

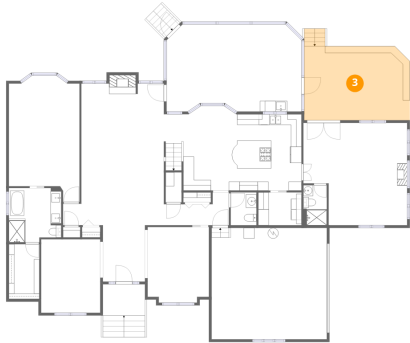


Max Dimensions: 7'10" x 10'6"
Calculated Area: 83 sq. ft
Included: Yes

Heated: Yes
Finished: Yes
Enclosed: Yes
Contiguous: Yes
Permitted: Yes
Wet space: No
Addition: No
Conversion: No

6001 Harbourwood Court, Brandermill, Midlothian, Chesterfield County, Virginia, United States, 23112

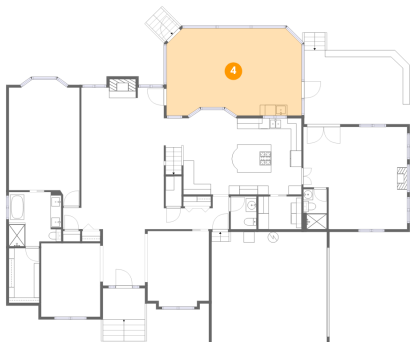
3 Floor 1 - Deck



Max Dimensions: 19'9" x 13'10"
Calculated Area: 282 sq. ft
Included: No

Heated: No
Finished: No
Enclosed: No
Contiguous: Yes
Permitted: Yes
Wet space: No
Addition: No
Conversion: No

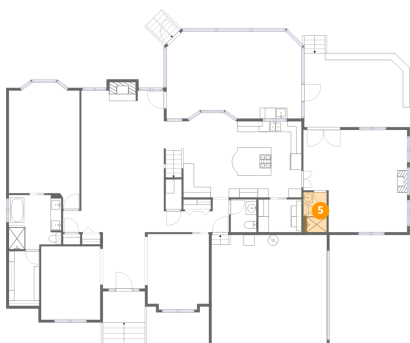
4 Floor 1 - Screened Porch



Max Dimensions: 25'3" x 16'3"
Calculated Area: 392 sq. ft
Included: No

Heated: No
Finished: No
Enclosed: No
Contiguous: Yes
Permitted: Yes
Wet space: No
Addition: No
Conversion: No

5 Floor 1 - Bath

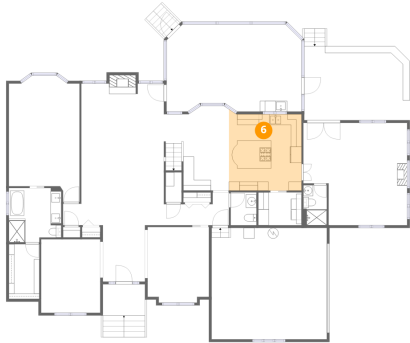


Max Dimensions: 4'5" x 7'6"
Calculated Area: 33 sq. ft
Included: Yes

Heated: Yes
Finished: Yes
Enclosed: Yes
Contiguous: Yes
Permitted: Yes
Wet space: Yes
Addition: No
Conversion: No

6001 Harbourwood Court, Brandermill, Midlothian, Chesterfield County, Virginia, United States, 23112

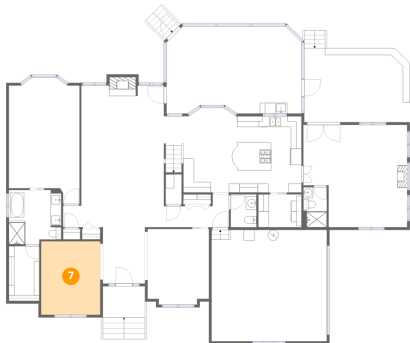
6 Floor 1 - Kitchen



Max Dimensions: 13'7" x 15'1"
Calculated Area: 194 sq. ft
Included: Yes

Heated: Yes
Finished: Yes
Enclosed: Yes
Contiguous: Yes
Permitted: Yes
Wet space: No
Addition: No
Conversion: No

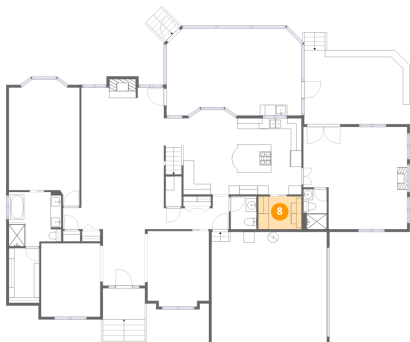
7 Floor 1 - Sitting Room



Max Dimensions: 11'1" x 13'9"
Calculated Area: 152 sq. ft
Included: Yes

Heated: Yes
Finished: Yes
Enclosed: Yes
Contiguous: Yes
Permitted: Yes
Wet space: No
Addition: No
Conversion: No

8 Floor 1 - Laundry

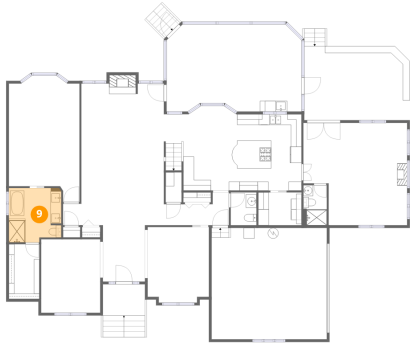


Max Dimensions: 8'1" x 6'2"
Calculated Area: 50 sq. ft
Included: Yes

Heated: Yes
Finished: Yes
Enclosed: Yes
Contiguous: Yes
Permitted: Yes
Wet space: No
Addition: No
Conversion: No

6001 Harbourwood Court, Brandermill, Midlothian, Chesterfield County, Virginia, United States, 23112

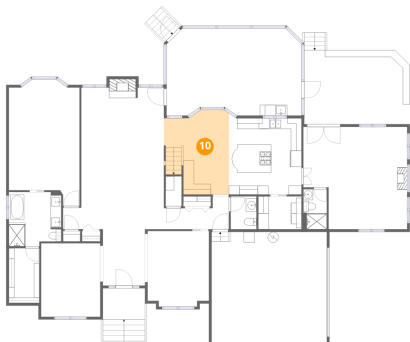
9 Floor 1 - Primary Bath



Max Dimensions: 9'10" x 10'2"
Calculated Area: 95 sq. ft
Included: Yes

Heated: Yes
Finished: Yes
Enclosed: Yes
Contiguous: Yes
Permitted: Yes
Wet space: Yes
Addition: No
Conversion: No

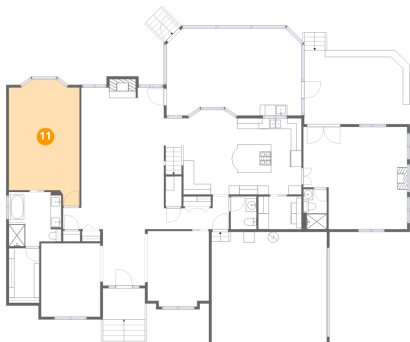
10 Floor 1 - Breakfast Nook



Max Dimensions: 12'2" x 15'10"
Calculated Area: 168 sq. ft
Included: Yes

Heated: Yes
Finished: Yes
Enclosed: Yes
Contiguous: Yes
Permitted: Yes
Wet space: No
Addition: No
Conversion: No

11 Floor 1 - Primary Bedroom



Max Dimensions: 13'3" x 22'9"
Calculated Area: 273 sq. ft
Included: Yes

Heated: Yes
Finished: Yes
Enclosed: Yes
Contiguous: Yes
Permitted: Yes
Wet space: No
Addition: No
Conversion: No

6001 Harbourwood Court, Brandermill, Midlothian, Chesterfield County, Virginia, United States, 23112

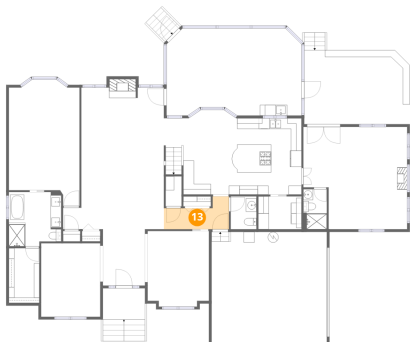
12 Floor 1 - W.I.C.



Max Dimensions: 5'8" x 10'3"
Calculated Area: 58 sq. ft
Included: Yes

Heated: Yes
Finished: Yes
Enclosed: Yes
Contiguous: Yes
Permitted: Yes
Wet space: No
Addition: No
Conversion: No

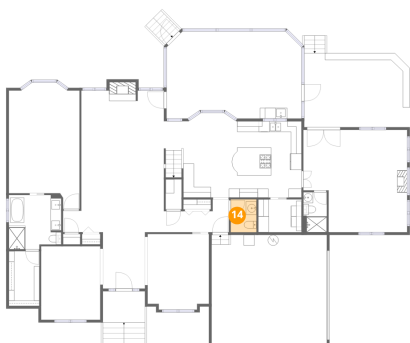
13 Floor 1 - Hall



Max Dimensions: 12'2" x 6'2"
Calculated Area: 55 sq. ft
Included: Yes

Heated: Yes
Finished: Yes
Enclosed: Yes
Contiguous: Yes
Permitted: Yes
Wet space: No
Addition: No
Conversion: No

14 Floor 1 - WC

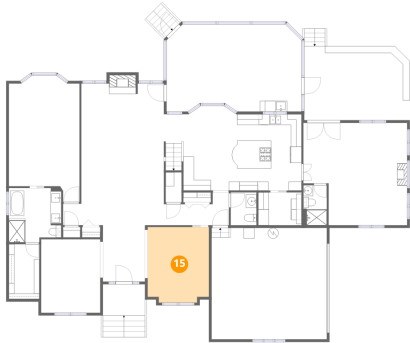


Max Dimensions: 4'10" x 6'2"
Calculated Area: 30 sq. ft
Included: Yes

Heated: Yes
Finished: Yes
Enclosed: Yes
Contiguous: Yes
Permitted: Yes
Wet space: Yes
Addition: No
Conversion: No

6001 Harbourwood Court, Brandermill, Midlothian, Chesterfield County, Virginia, United States, 23112

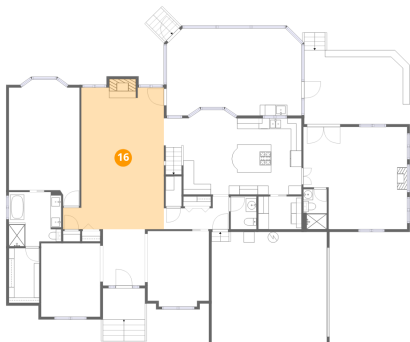
15 Floor 1 - Dining Area



Max Dimensions: 11'5" x 14'2"
Calculated Area: 157 sq. ft
Included: Yes

Heated: Yes
Finished: Yes
Enclosed: Yes
Contiguous: Yes
Permitted: Yes
Wet space: No
Addition: No
Conversion: No

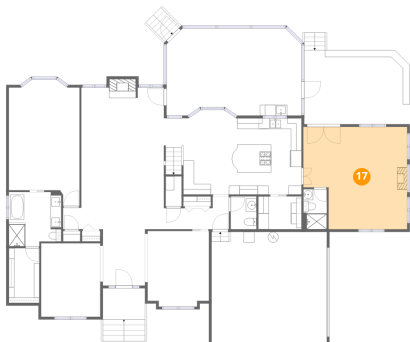
16 Floor 1 - Living Room



Max Dimensions: 18'10" x 26'5"
Calculated Area: 430 sq. ft
Included: Yes

Heated: Yes
Finished: Yes
Enclosed: Yes
Contiguous: Yes
Permitted: Yes
Wet space: No
Addition: No
Conversion: No

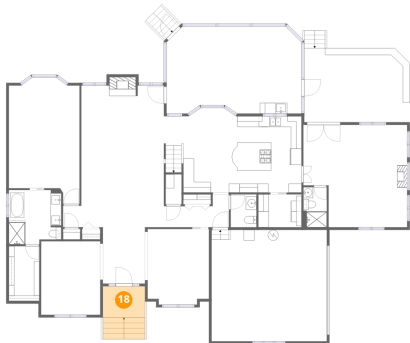
17 Floor 1 - Family Room



Max Dimensions: 19'5" x 19'1"
Calculated Area: 334 sq. ft
Included: Yes

Heated: Yes
Finished: Yes
Enclosed: Yes
Contiguous: Yes
Permitted: Yes
Wet space: No
Addition: No
Conversion: No

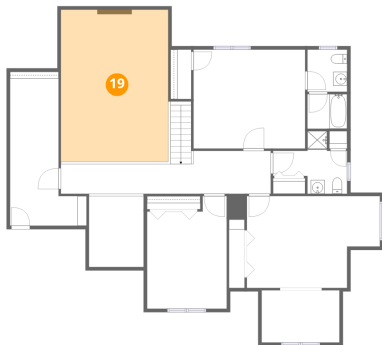
18 Floor 1 - Porch



Max Dimensions: 7'10" x 5'10"
Calculated Area: 78 sq. ft
Included: No

Heated: No
Finished: No
Enclosed: No
Contiguous: Yes
Permitted: Yes
Wet space: No
Addition: No
Conversion: No

19 Floor 2 - Open To Below



Max Dimensions: 15'5" x 21'10"
Calculated Area: 338 sq. ft
Included: No

Heated: No
Finished: No
Enclosed: No
Contiguous: Yes
Permitted: No
Wet space: No
Addition: No
Conversion: No

20 Floor 2 - Open To Below



Max Dimensions: 7'10" x 10'2"
Calculated Area: 80 sq. ft
Included: No

Heated: No
Finished: No
Enclosed: No
Contiguous: Yes
Permitted: No
Wet space: No
Addition: No
Conversion: No

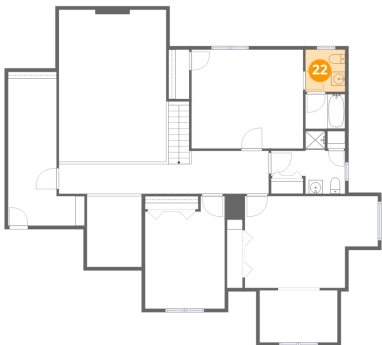
21 Floor 2 - Bath



Max Dimensions: 5'9" x 5'0"
Calculated Area: 28 sq. ft
Included: Yes

Heated: Yes
Finished: Yes
Enclosed: Yes
Contiguous: Yes
Permitted: Yes
Wet space: Yes
Addition: No
Conversion: No

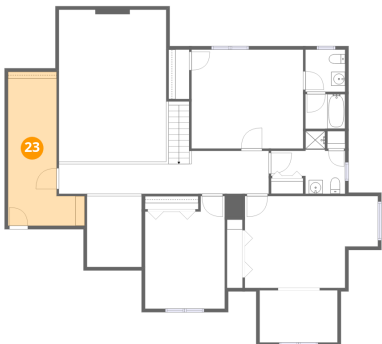
22 Floor 2 - WC



Max Dimensions: 5'9" x 6'1"
Calculated Area: 35 sq. ft
Included: Yes

Heated: Yes
Finished: Yes
Enclosed: Yes
Contiguous: Yes
Permitted: Yes
Wet space: Yes
Addition: No
Conversion: No

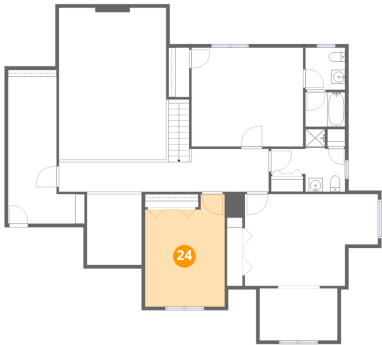
23 Floor 2 - Room



Max Dimensions: 11'0" x 22'1"
Calculated Area: 172 sq. ft
Included: Yes

Heated: Yes
Finished: Yes
Enclosed: Yes
Contiguous: Yes
Permitted: Yes
Wet space: No
Addition: No
Conversion: No

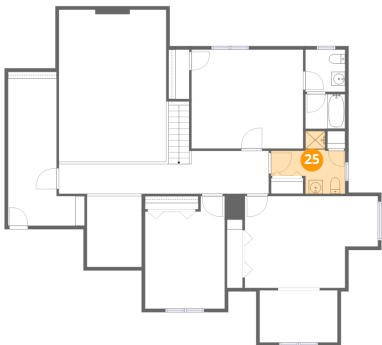
24 Floor 2 - Bedroom



Max Dimensions: 11'5" x 16'2"
Calculated Area: 168 sq. ft
Included: Yes

Heated: Yes
Finished: Yes
Enclosed: Yes
Contiguous: Yes
Permitted: Yes
Wet space: No
Addition: No
Conversion: No

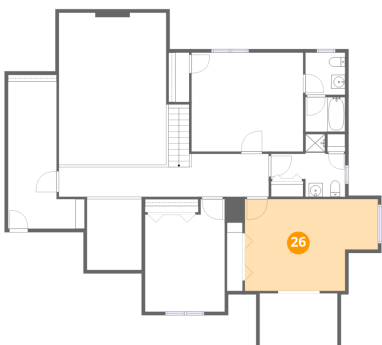
25 Floor 2 - Bath



Max Dimensions: 10'8" x 9'0"
Calculated Area: 61 sq. ft
Included: Yes

Heated: Yes
Finished: Yes
Enclosed: Yes
Contiguous: Yes
Permitted: Yes
Wet space: Yes
Addition: No
Conversion: No

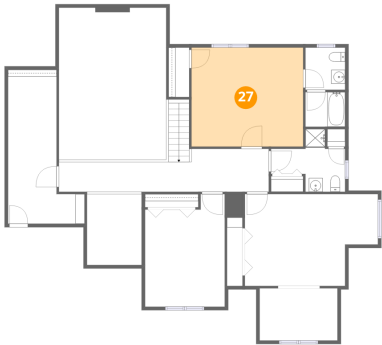
26 Floor 2 - Bedroom



Max Dimensions: 19'2" x 13'3"
Calculated Area: 225 sq. ft
Included: Yes

Heated: Yes
Finished: Yes
Enclosed: Yes
Contiguous: Yes
Permitted: Yes
Wet space: No
Addition: No
Conversion: No

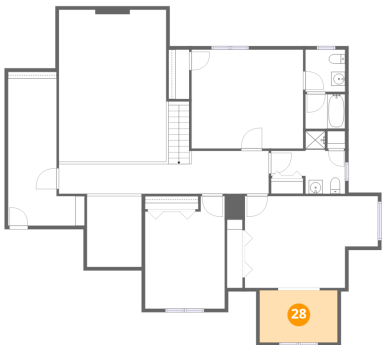
27 Floor 2 - Bedroom



Max Dimensions: 16'1" x 14'3"
Calculated Area: 229 sq. ft
Included: Yes

Heated: Yes
Finished: Yes
Enclosed: Yes
Contiguous: Yes
Permitted: Yes
Wet space: No
Addition: No
Conversion: No

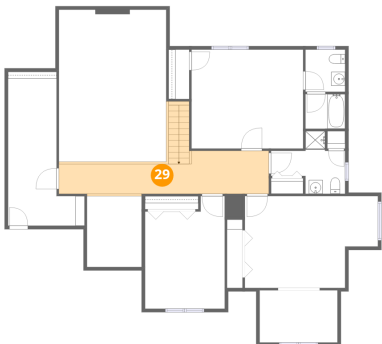
28 Floor 2 - Room



Max Dimensions: 11'2" x 7'6"
Calculated Area: 84 sq. ft
Included: Yes

Heated: Yes
Finished: Yes
Enclosed: Yes
Contiguous: Yes
Permitted: Yes
Wet space: No
Addition: No
Conversion: No

29 Floor 2 - Hall



Max Dimensions: 30'3" x 6'2"
Calculated Area: 188 sq. ft
Included: Yes

Heated: Yes
Finished: Yes
Enclosed: Yes
Contiguous: Yes
Permitted: Yes
Wet space: No
Addition: No
Conversion: No