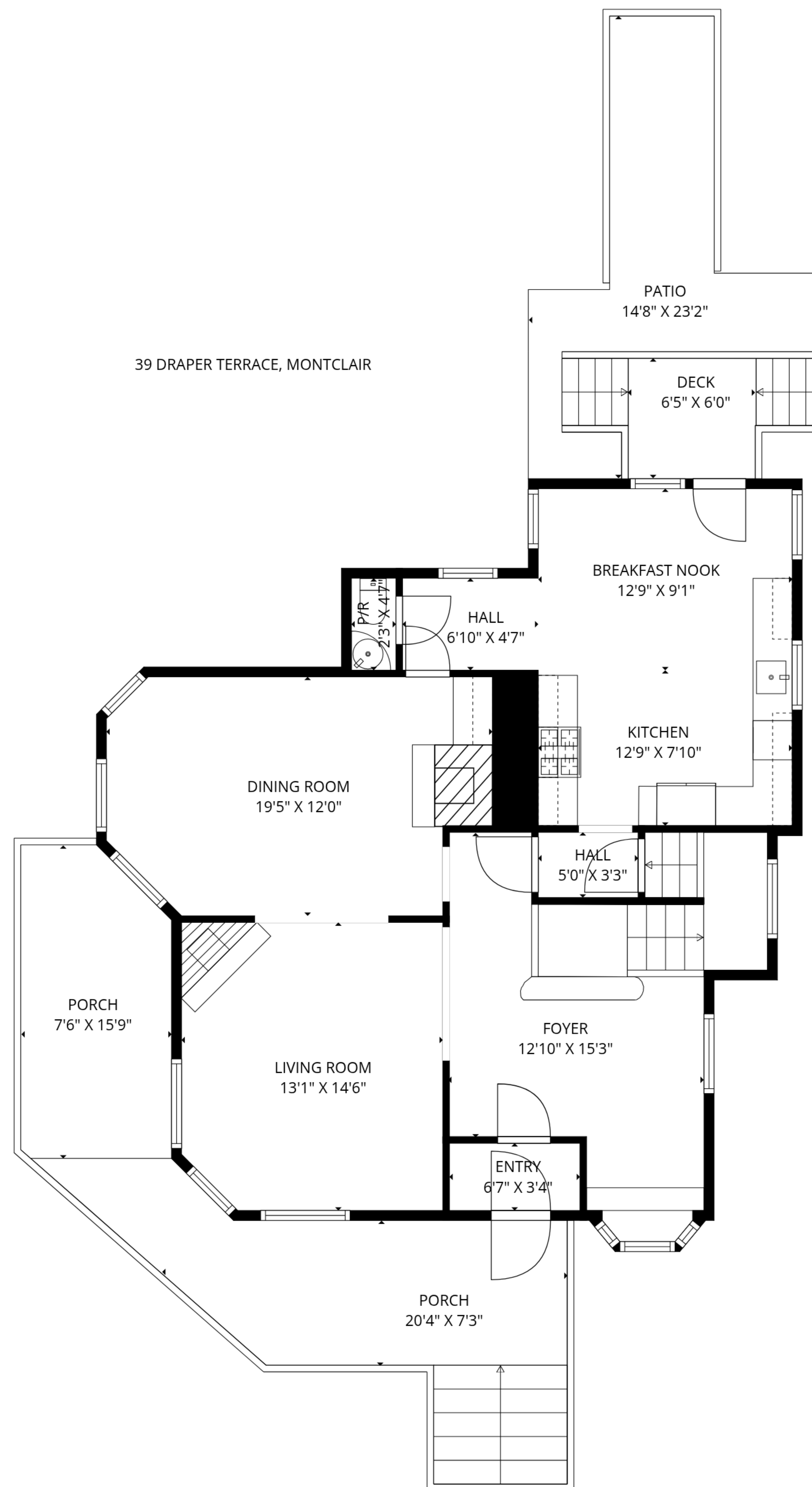


TOTAL: 3077 sq. ft

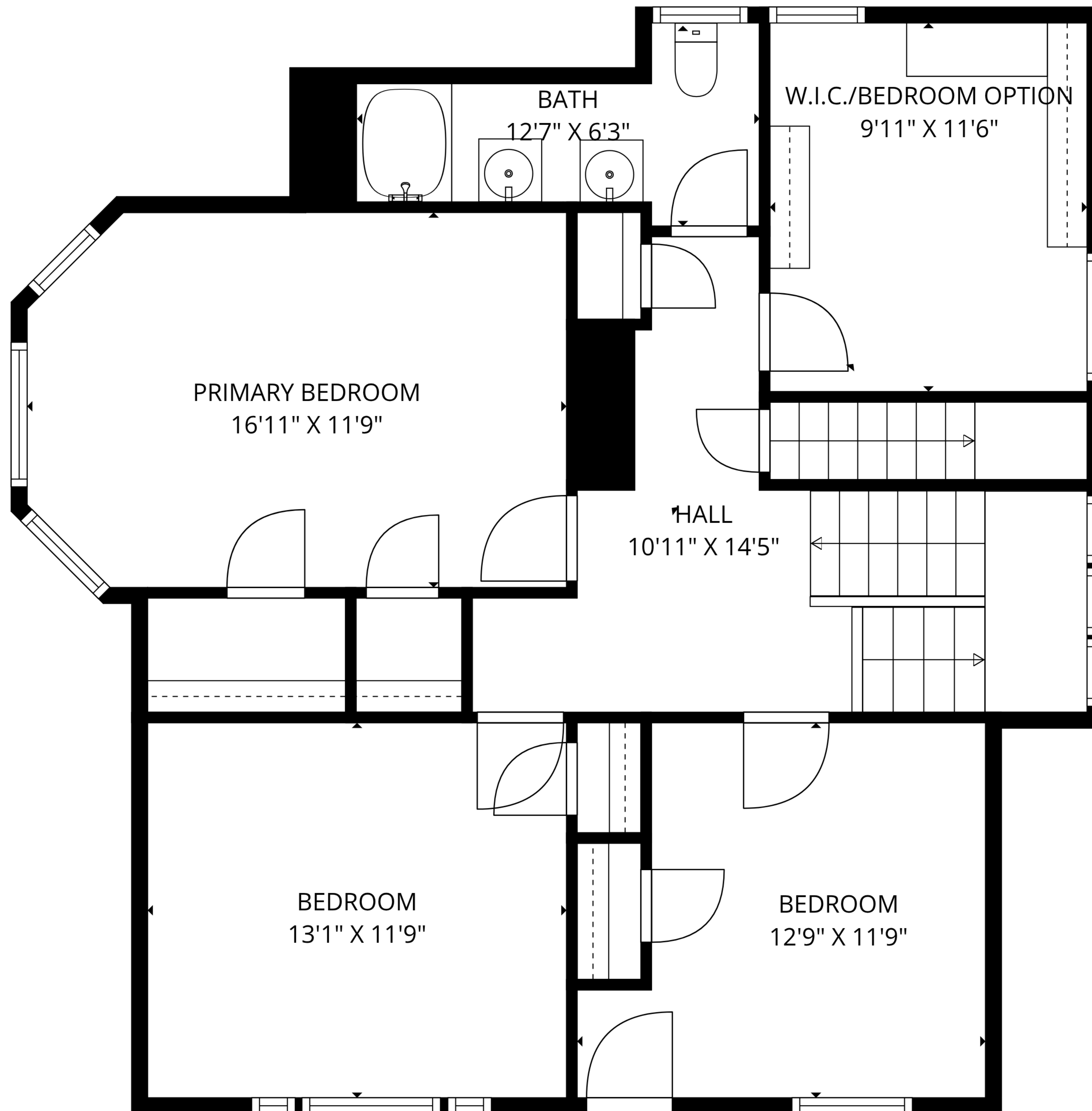
Basement: 594 sq. ft, 1st floor: 959 sq. ft, 2nd floor: 939 sq. ft, 3rd floor: 585 sq. ft
EXCLUDED AREAS: UTILITY: 206 sq. ft, STORAGE: 37 sq. ft, PATIO: 513 sq. ft,
PORCH: 313 sq. ft, DECK: 61 sq. ft, BAY WINDOW: 7 sq. ft,
WALLS: 264 sq. ft



TOTAL: 3077 sq. ft

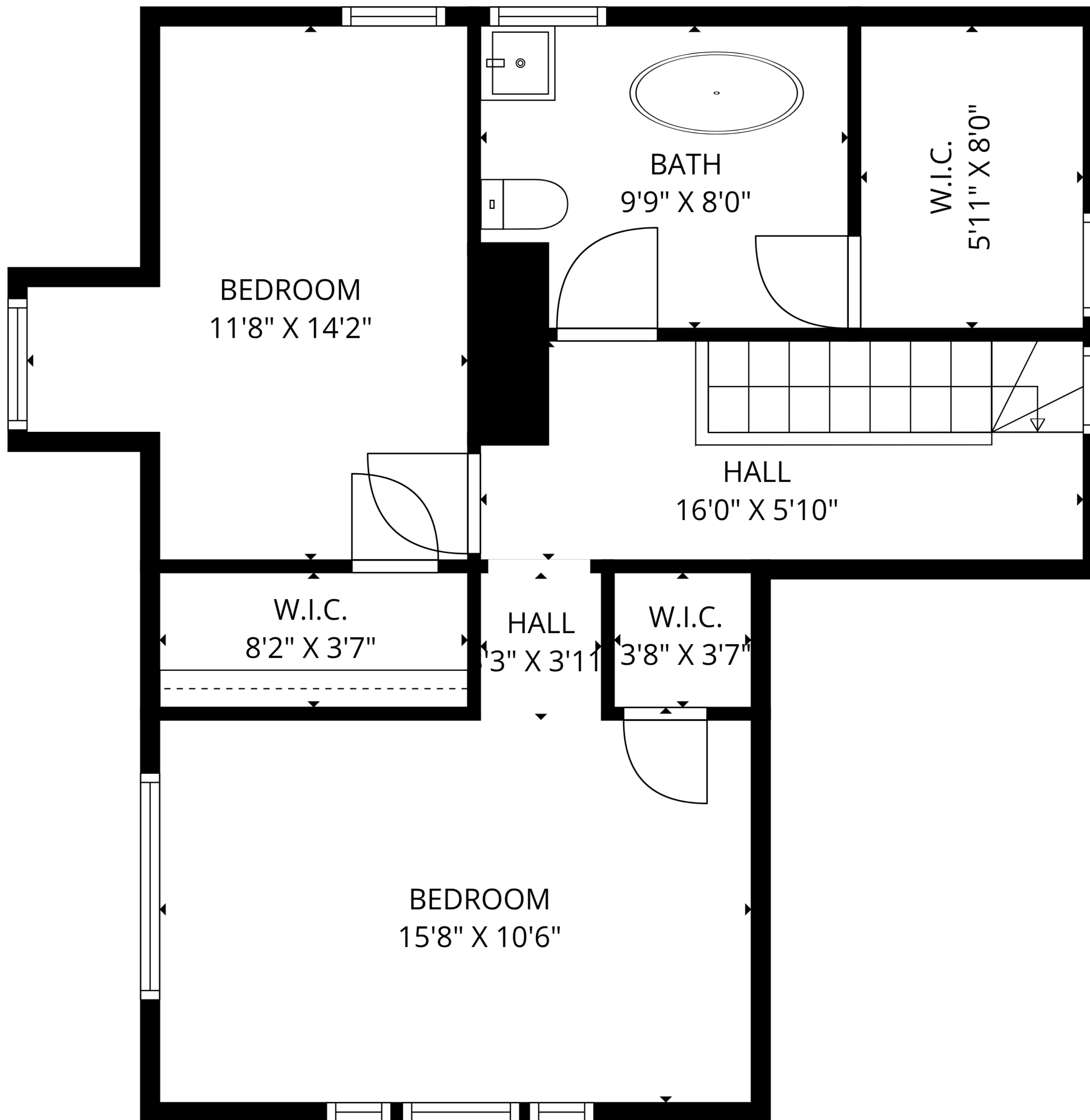
Basement: 594 sq. ft, 1st floor: 959 sq. ft, 2nd floor: 939 sq. ft, 3rd floor: 585 sq. ft
 EXCLUDED AREAS: UTILITY: 206 sq. ft, STORAGE: 37 sq. ft, PATIO: 513 sq. ft,
 PORCH: 313 sq. ft, DECK: 61 sq. ft, BAY WINDOW: 7 sq. ft,
 WALLS: 264 sq. ft

Measurements Are Deemed Highly Reliable But Not Guaranteed



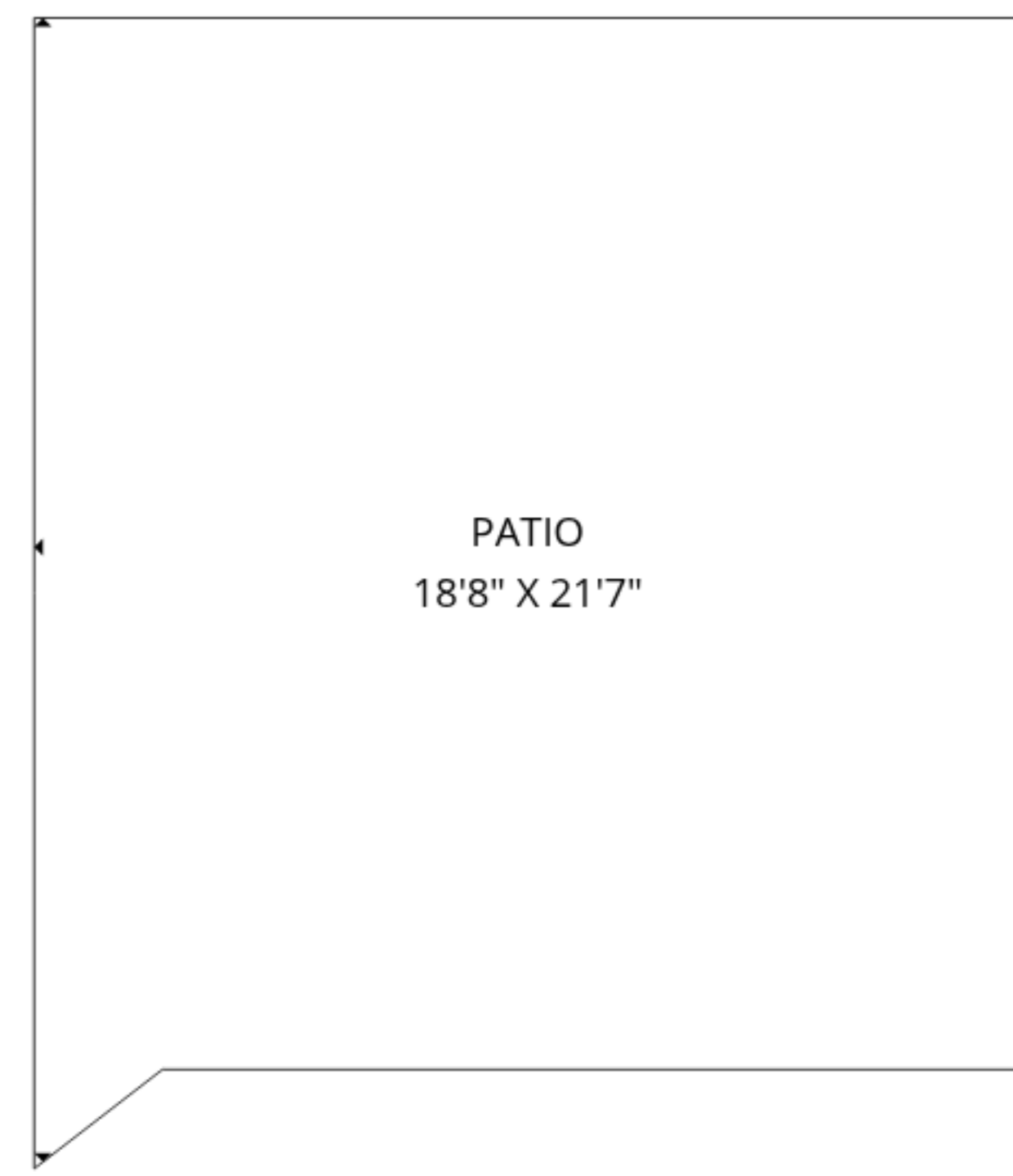
TOTAL: 3077 sq. ft

Basement: 594 sq. ft, 1st floor: 959 sq. ft, 2nd floor: 939 sq. ft, 3rd floor: 585 sq. ft
 EXCLUDED AREAS: UTILITY: 206 sq. ft, STORAGE: 37 sq. ft, PATIO: 513 sq. ft,
 PORCH: 313 sq. ft, DECK: 61 sq. ft, BAY WINDOW: 7 sq. ft,
 WALLS: 264 sq. ft

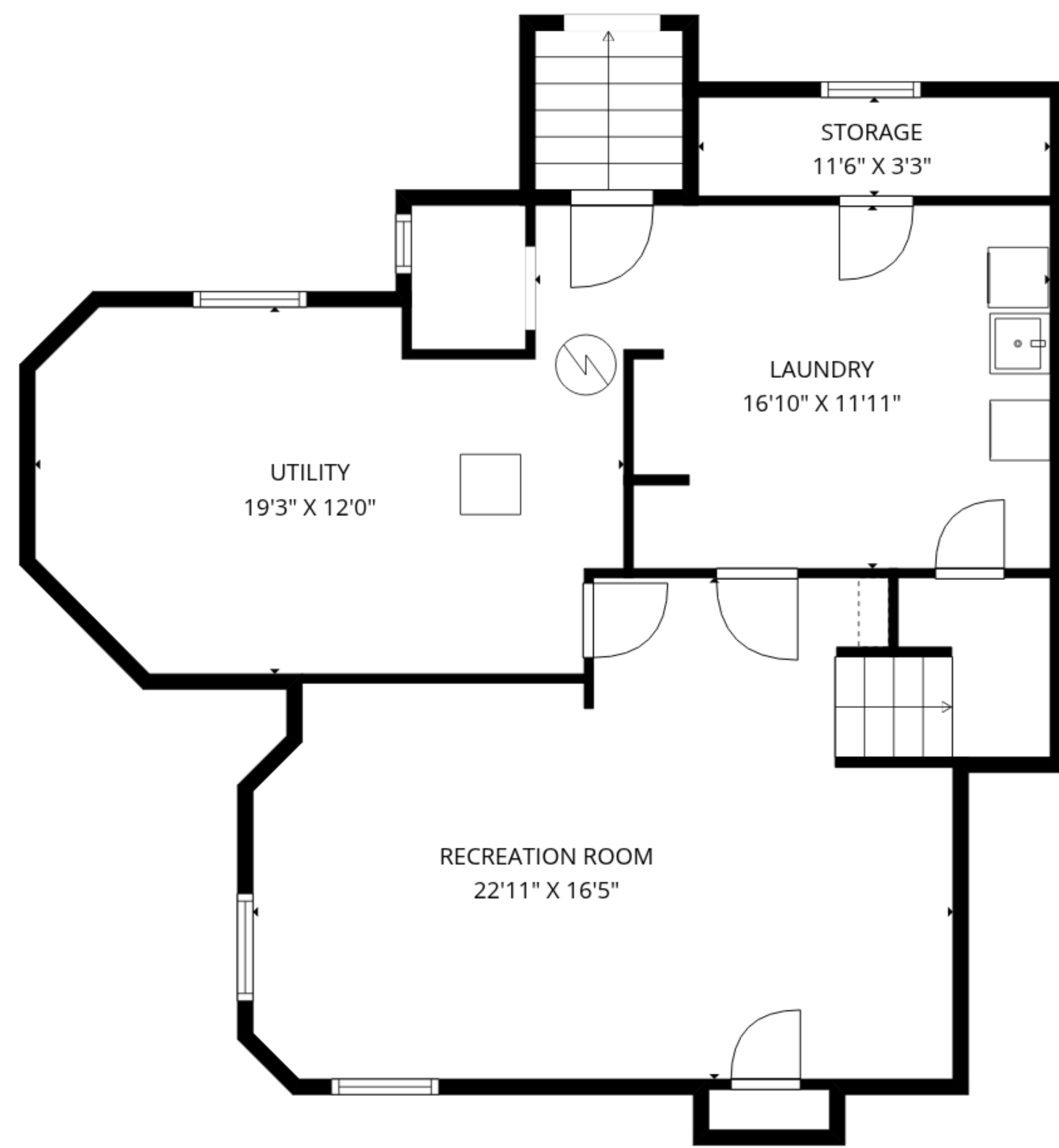


TOTAL: 3077 sq. ft

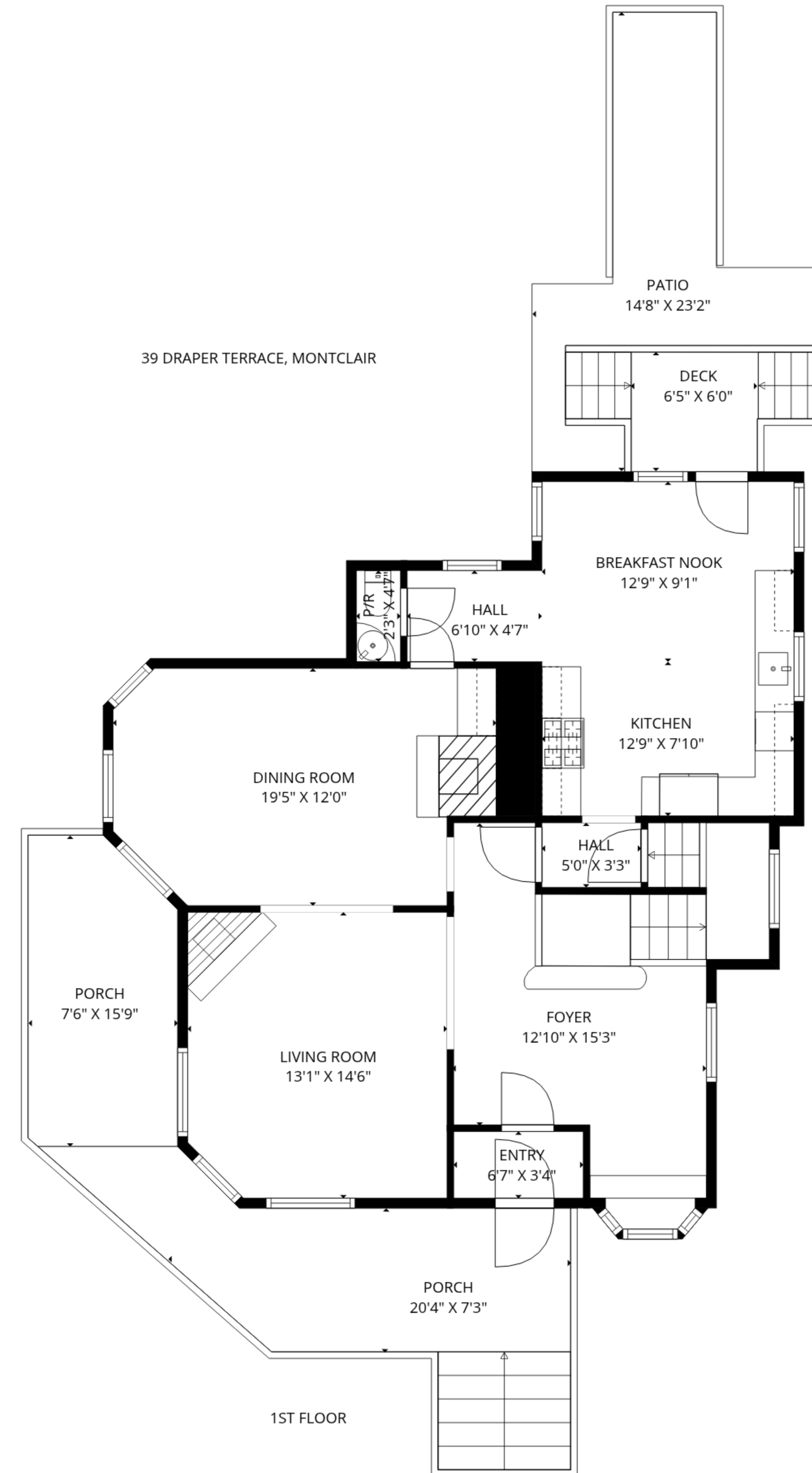
Basement: 594 sq. ft, 1st floor: 959 sq. ft, 2nd floor: 939 sq. ft, 3rd floor: 585 sq. ft
 EXCLUDED AREAS: UTILITY: 206 sq. ft, STORAGE: 37 sq. ft, PATIO: 513 sq. ft,
 PORCH: 313 sq. ft, DECK: 61 sq. ft, BAY WINDOW: 7 sq. ft,
 WALLS: 264 sq. ft



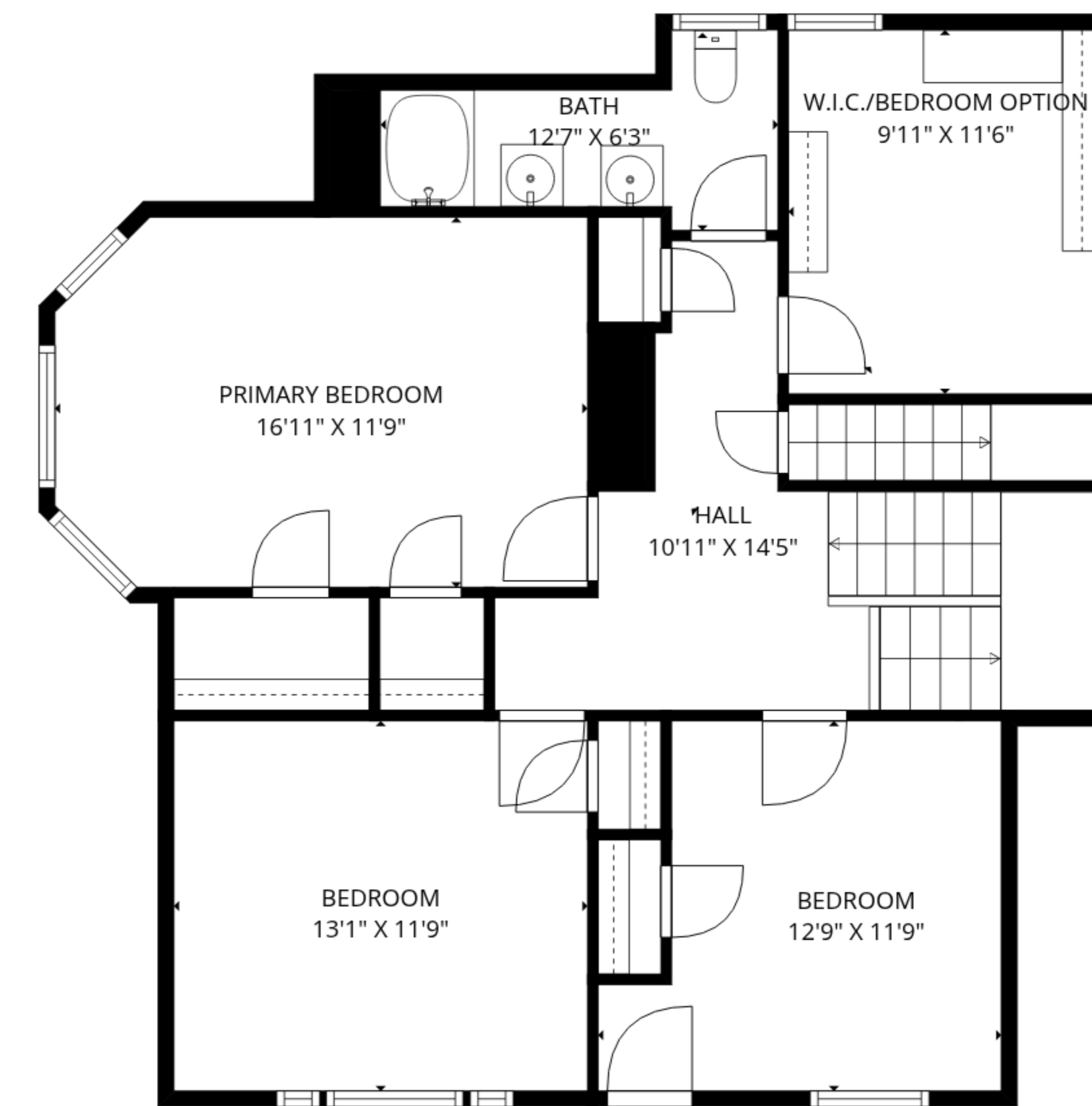
39 DRAPER TERRACE, MONTCLAIR



BASEMENT



1ST FLOOR



2ND FLOOR



3RD FLOOR

TOTAL: 3077 sq. ft

Basement: 594 sq. ft, 1st floor: 959 sq. ft, 2nd floor: 939 sq. ft, 3rd floor: 585 sq. ft
 EXCLUDED AREAS: UTILITY: 206 sq. ft, STORAGE: 37 sq. ft, PATIO: 513 sq. ft,
 PORCH: 313 sq. ft, DECK: 61 sq. ft, BAY WINDOW: 7 sq. ft,
 WALLS: 264 sq. ft