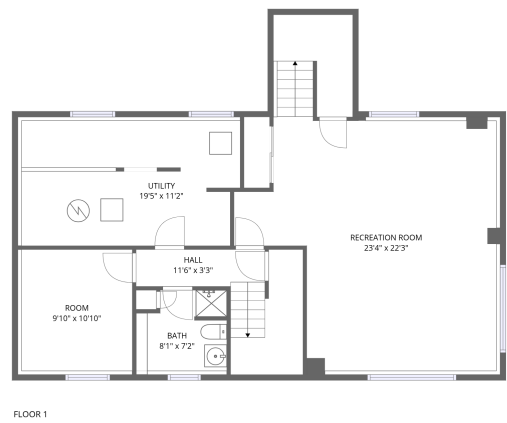


Home report

565 Vinette Road, Vinette, Hammond, United Counties of Prescott and Russell, Ontario, Canada, K0A 2A0



Total Area: 1880 sq. ft

Below Ground: 826 sq. ft, Floor 2: 1054 sq. ft

Excluded: Utility 222 sq. ft, Patio 314 sq. ft, Walls: 152 sq. ft

Property summary

 **2** Floors

 **3** Bedrooms

 **2** Bathrooms

565 Vinette Road, Vinette, Hammond, United Counties of Prescott and Russell, Ontario, Canada, K0A 2A0



Room dimensions

Floor 1 Below ground Total:826sqft Excluded: 222sqft

#		Max Dimensions	sqft	Included
1	Bath	8'1" x 7'2"	55 sq. ft	Yes
2	Hall	11'6" x 3'3"	98 sq. ft	Yes
3	Room	9'10" x 10'10"	113 sq. ft	Yes
4	Utility	19'5" x 11'2"	222 sq. ft	No
5	Recreation Room	23'4" x 22'3"	507 sq. ft	Yes

**565 Vinette Road, Vinette, Hammond, United Counties of
Prescott and Russell, Ontario, Canada, K0A 2A0**

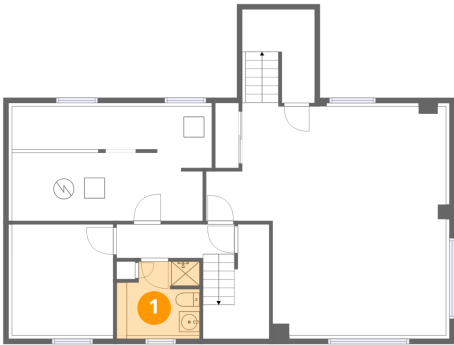


Total:1054sqft Excluded: 314sqft

Scan captured on Thu, 25 Sep 2025 22:48:09 GMT

565 Vinette Road, Vinette, Hammond, United Counties of
Prescott and Russell, Ontario, Canada, K0A 2A0

1 Floor 1 - Bath



Max Dimensions: 8'1" x 7'2"
Calculated Area: 55 sq. ft
Included: Yes

Heated: Yes
Finished: Yes
Enclosed: Yes
Contiguous: Yes
Permitted: Yes
Wet space: Yes
Addition: No
Conversion: No

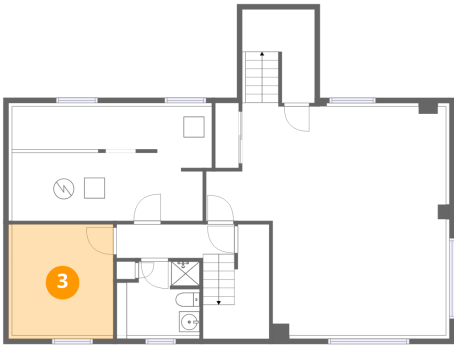
2 Floor 1 - Hall



Max Dimensions: 11'6" x 3'3"
Calculated Area: 98 sq. ft
Included: Yes

Heated: Yes
Finished: Yes
Enclosed: Yes
Contiguous: Yes
Permitted: Yes
Wet space: No
Addition: No
Conversion: No

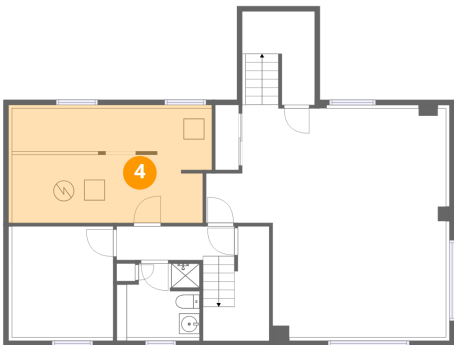
3 Floor 1 - Room



Max Dimensions: 9'10" x 10'10"
Calculated Area: 113 sq. ft
Included: Yes

Heated: Yes
Finished: Yes
Enclosed: Yes
Contiguous: Yes
Permitted: Yes
Wet space: No
Addition: No
Conversion: No

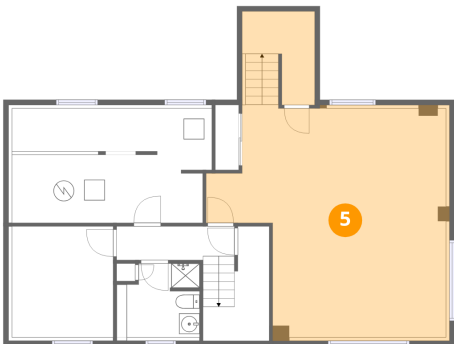
4 Floor 1 - Utility



Max Dimensions: 19'5" x 11'2"
Calculated Area: 222 sq. ft
Included: No

Heated: Yes
Finished: No
Enclosed: Yes
Contiguous: Yes
Permitted: Yes
Wet space: No
Addition: No
Conversion: No

5 Floor 1 - Recreation Room



Max Dimensions: 23'4" x 22'3"
Calculated Area: 507 sq. ft
Included: Yes

Heated: Yes
Finished: Yes
Enclosed: Yes
Contiguous: Yes
Permitted: Yes
Wet space: No
Addition: No
Conversion: No

565 Vinette Road, Vinette, Hammond, United Counties of Prescott and Russell, Ontario, Canada, K0A 2A0

6 Floor 2 - Bedroom



Max Dimensions: 10'5" x 8'7"
Calculated Area: 87 sq. ft
Included: Yes

Heated: Yes
Finished: Yes
Enclosed: Yes
Contiguous: Yes
Permitted: Yes
Wet space: No
Addition: No
Conversion: No

7 Floor 2 - Living Room



Max Dimensions: 17'7" x 11'3"
Calculated Area: 203 sq. ft
Included: Yes

Heated: Yes
Finished: Yes
Enclosed: Yes
Contiguous: Yes
Permitted: Yes
Wet space: No
Addition: No
Conversion: No

8 Floor 2 - Primary Bedroom



Max Dimensions: 11'7" x 11'4"
Calculated Area: 131 sq. ft
Included: Yes

Heated: Yes
Finished: Yes
Enclosed: Yes
Contiguous: Yes
Permitted: Yes
Wet space: No
Addition: No
Conversion: No

565 Vinette Road, Vinette, Hammond, United Counties of Prescott and Russell, Ontario, Canada, K0A 2A0

9 Floor 2 - Foyer



Max Dimensions: 6'5" x 3'4"
Calculated Area: 21 sq. ft
Included: Yes

Heated: Yes
Finished: Yes
Enclosed: Yes
Contiguous: Yes
Permitted: Yes
Wet space: No
Addition: No
Conversion: No

10 Floor 2 - Kitchen



Max Dimensions: 18'10" x 11'4"
Calculated Area: 216 sq. ft
Included: Yes

Heated: Yes
Finished: Yes
Enclosed: Yes
Contiguous: Yes
Permitted: Yes
Wet space: No
Addition: No
Conversion: No

11 Floor 2 - Patio



Max Dimensions: 12'0" x 23'7"
Calculated Area: 314 sq. ft
Included: No

Heated: No
Finished: No
Enclosed: No
Contiguous: Yes
Permitted: Yes
Wet space: No
Addition: No
Conversion: No

565 Vinette Road, Vinette, Hammond, United Counties of
Prescott and Russell, Ontario, Canada, K0A 2A0

12 Floor 2 - Bath



Max Dimensions: 7'10" x 7'11"
Calculated Area: 56 sq. ft
Included: Yes

Heated: Yes
Finished: Yes
Enclosed: Yes
Contiguous: Yes
Permitted: Yes
Wet space: Yes
Addition: No
Conversion: No

13 Floor 2 - Entry



Max Dimensions: 7'1" x 8'9"
Calculated Area: 62 sq. ft
Included: Yes

Heated: Yes
Finished: Yes
Enclosed: Yes
Contiguous: Yes
Permitted: Yes
Wet space: No
Addition: No
Conversion: No

14 Floor 2 - Hall



Max Dimensions: 18'1" x 3'10"
Calculated Area: 86 sq. ft
Included: Yes

Heated: Yes
Finished: Yes
Enclosed: Yes
Contiguous: Yes
Permitted: Yes
Wet space: No
Addition: No
Conversion: No

565 Vinette Road, Vinette, Hammond, United Counties of
Prescott and Russell, Ontario, Canada, K0A 2A0

15 Floor 2 - Bedroom



Max Dimensions: 9'1" x 11'4"
Calculated Area: 103 sq. ft
Included: Yes

Heated: Yes
Finished: Yes
Enclosed: Yes
Contiguous: Yes
Permitted: Yes
Wet space: No
Addition: No
Conversion: No