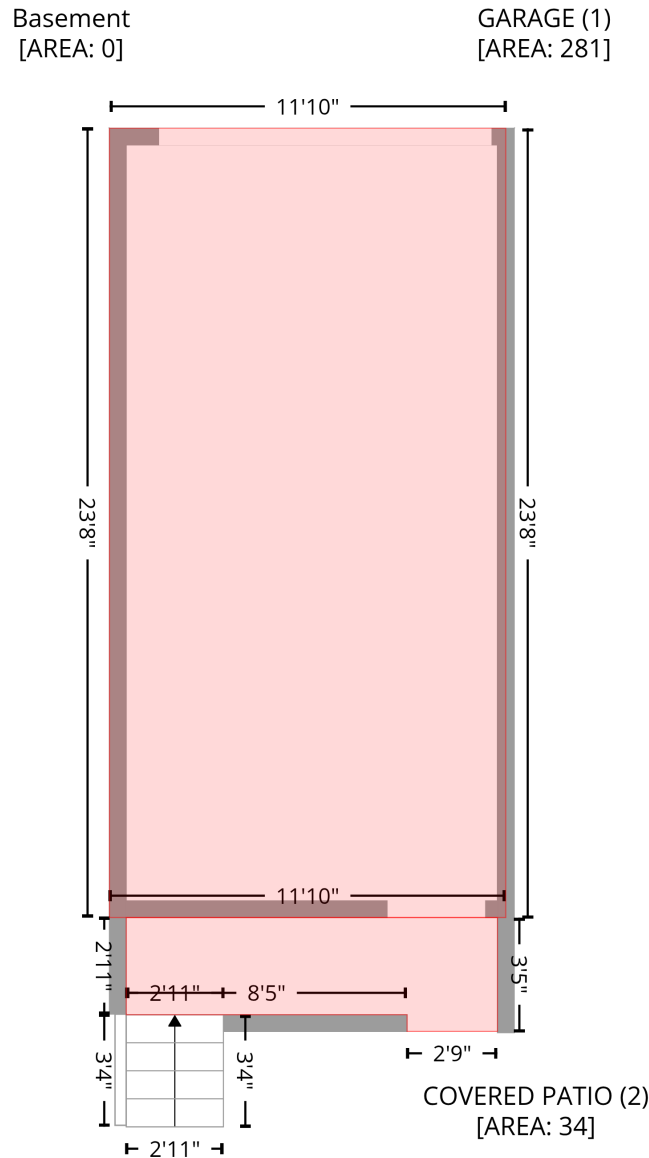


721 North Poplar Street, Fourth Ward, Charlotte, Mecklenburg County, North Carolina, United States, 28202, 7

Gross Living Area: 556 sq. ft

Level 1 - Below Grade



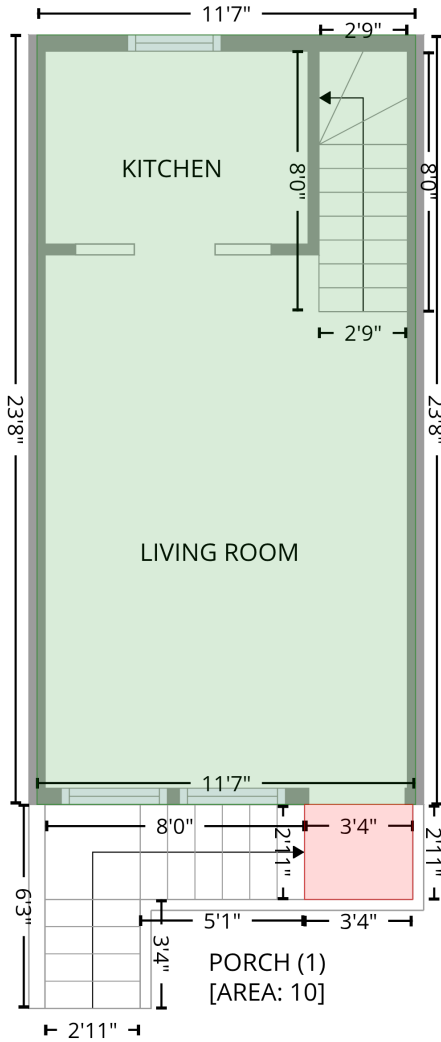
Space	Area (sq. ft)	Calculation <small>Coordinate Polygon Area Algorithm using inches</small>
GARAGE (Non-living area)	281	$-\left((362.7 + 362.7) * (20 - 303.9) + (362.7 + 220.3) * (303.9 - 303.9) + (220.3 + 220.3) * (303.9 - 20) + (220.3 + 362.7) * (20 - 20)\right) * 0.5 * 0.00694$
COVERED PATIO (Non-living area)	34	$-\left((226.3 + 359.7) * (303.9 - 303.9) + (359.7 + 359.7) * (303.9 - 344.9) + (359.7 + 327.2) * (344.9 - 344.9) + (327.2 + 327.2) * (344.9 - 338.9) + (327.2 + 226.3) * (338.9 - 338.9) + (226.3 + 226.3) * (338.9 - 303.9)\right) * 0.5 * 0.00694$

721 North Poplar Street, Fourth Ward, Charlotte, Mecklenburg County, North Carolina, United States, 28202, 7

Gross Living Area: 556 sq. ft

Level 2

1st floor  
[AREA: 275]



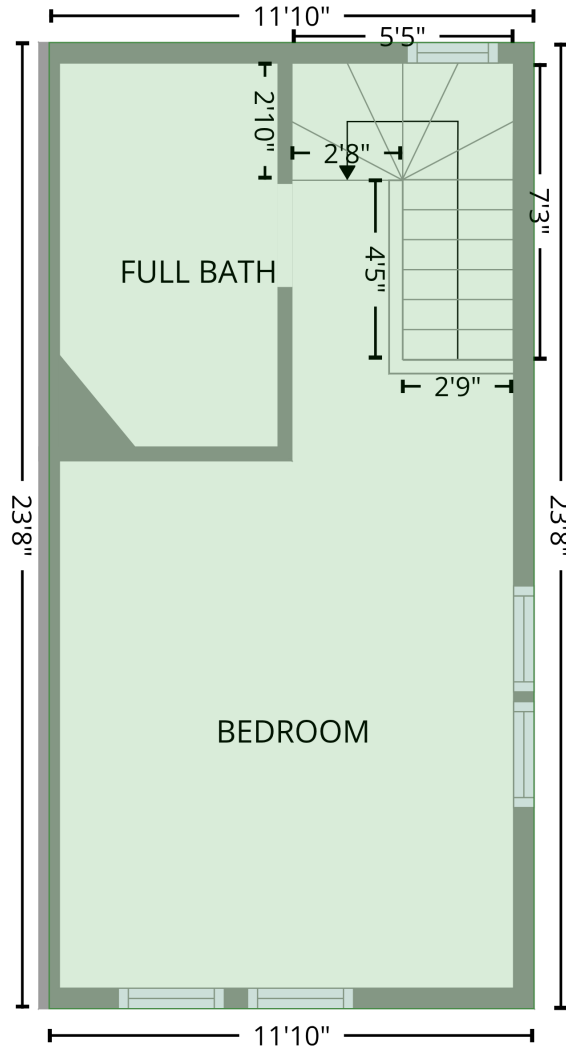
Space	Area (sq. ft)	Calculation <small>Coordinate Polygon Area Algorithm using inches</small>
1st floor (Living area)	275	$-((362.7 + 362.7) * (20 - 303.9) + (362.7 + 223.3) * (303.9 - 303.9) + (223.3 + 223.3) * (303.9 - 20) + (223.3 + 362.7) * (20 - 20)) * 0.5 * 0.00694$
PORCH (Non-living area)	10	$-((361.7 + 361.7) * (303.9 - 339) + (361.7 + 321.8) * (339 - 339) + (321.8 + 321.8) * (339 - 303.9) + (321.8 + 361.7) * (303.9 - 303.9)) * 0.5 * 0.00694$

721 North Poplar Street, Fourth Ward, Charlotte, Mecklenburg County, North Carolina, United States, 28202, 7

Gross Living Area: 556 sq. ft

Level 3

2nd floor  
[AREA: 281]



Space	Area (sq. ft)	Calculation <small>Coordinate Polygon Area Algorithm using inches</small>
2nd floor (Living area)	281	$-\left((365.7 + 365.7) * (20 - 303.9) + (365.7 + 223.3) * (303.9 - 303.9) + (223.3 + 223.3) * (303.9 - 20) + (223.3 + 365.7) * (20 - 20)\right) * 0.5 * 0.00694$