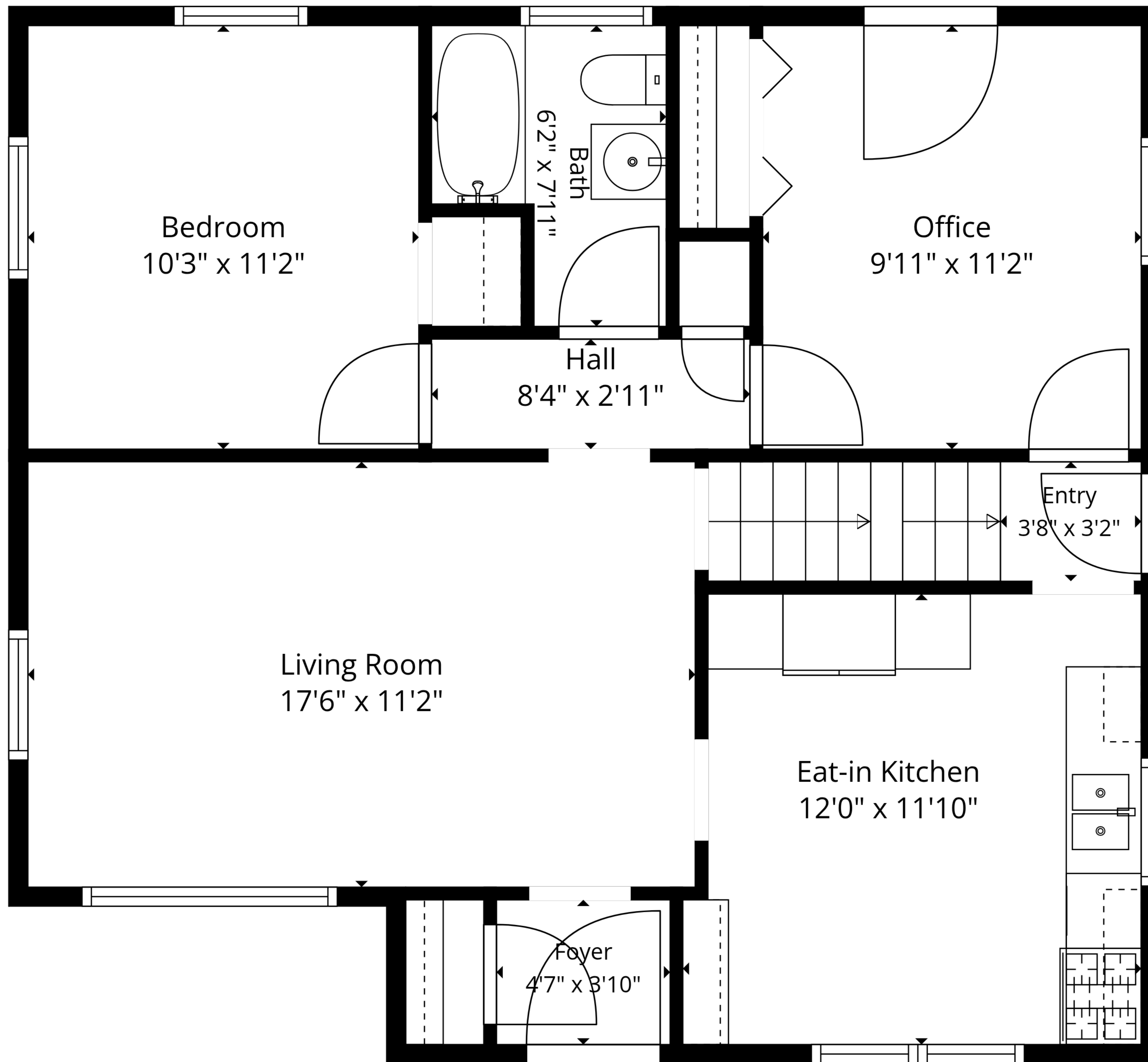


TOTAL: 923 sq. ft

Basement: 0 sq. ft, 1st floor: 741 sq. ft, 2nd floor: 182 sq. ft

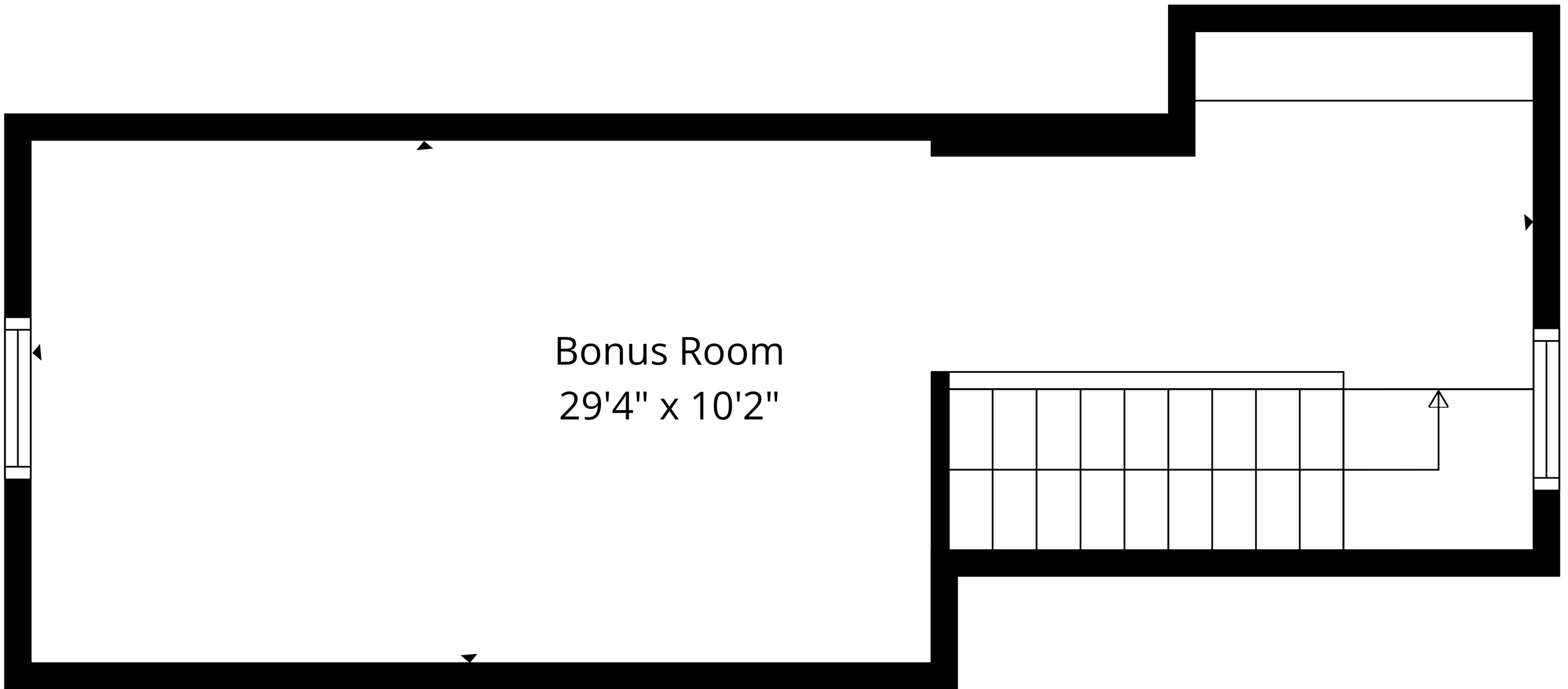
EXCLUDED AREAS: BASEMENT: 741 sq. ft, LOW CEILING: 104 sq. ft, WALLS: 157 sq. ft



TOTAL: 923 sq. ft

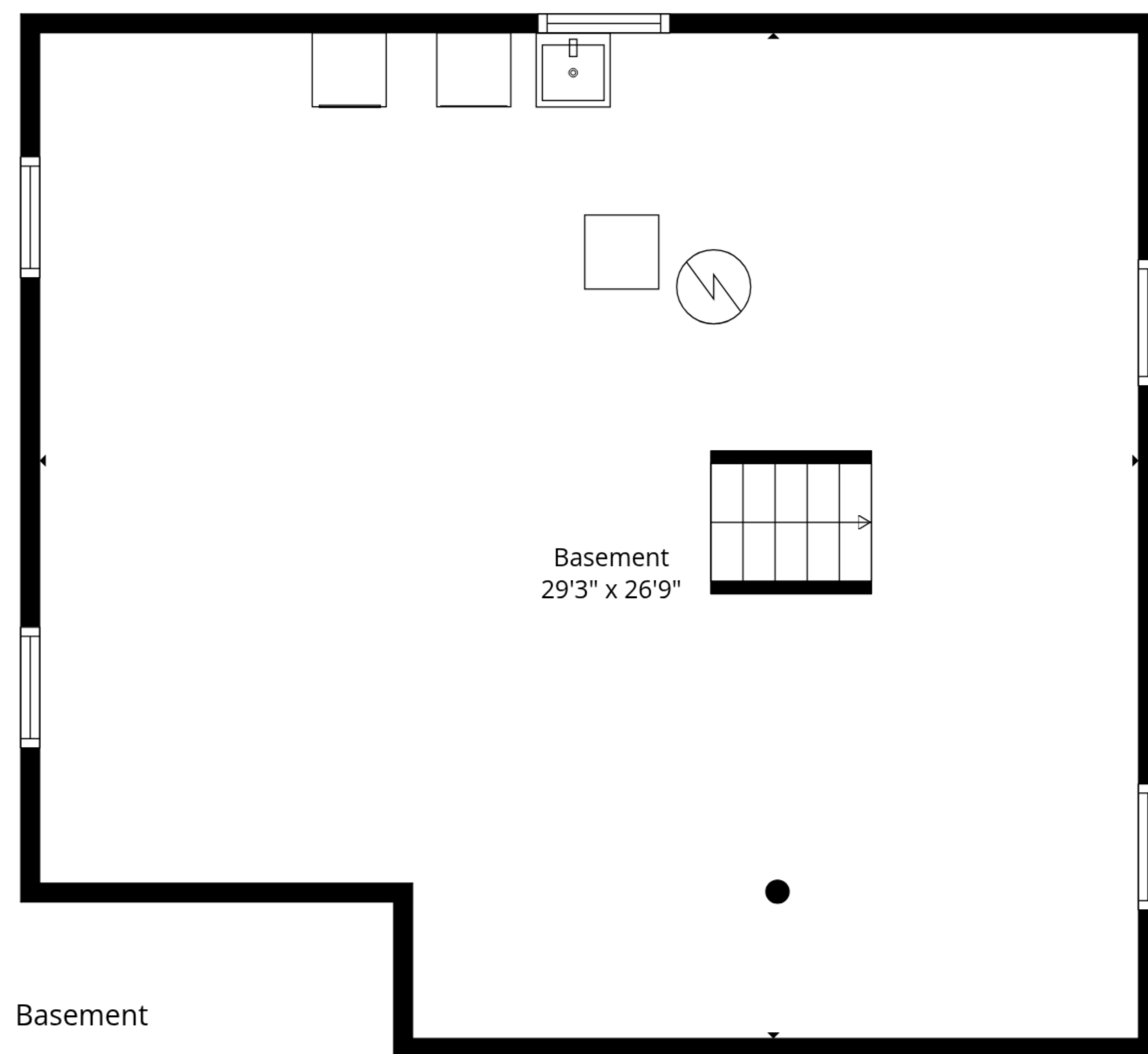
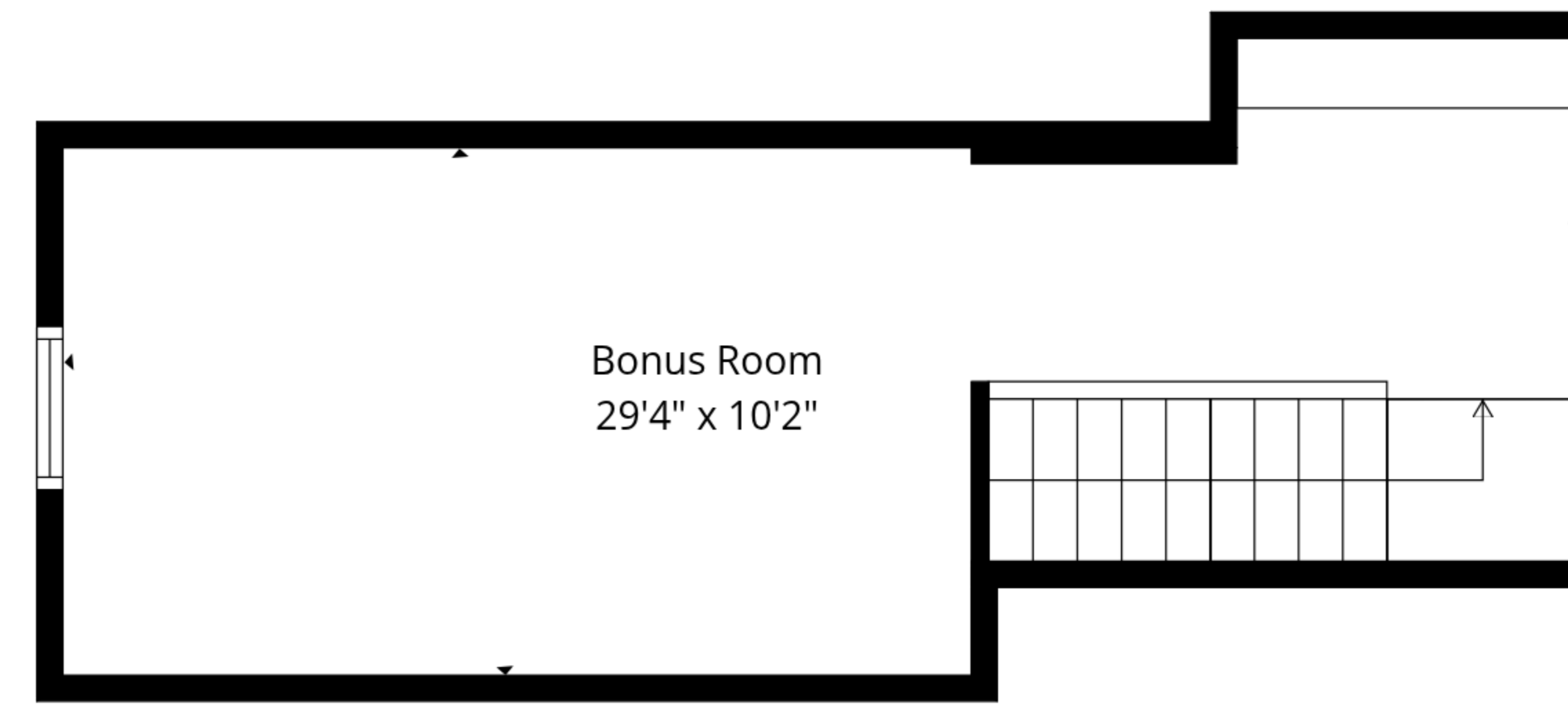
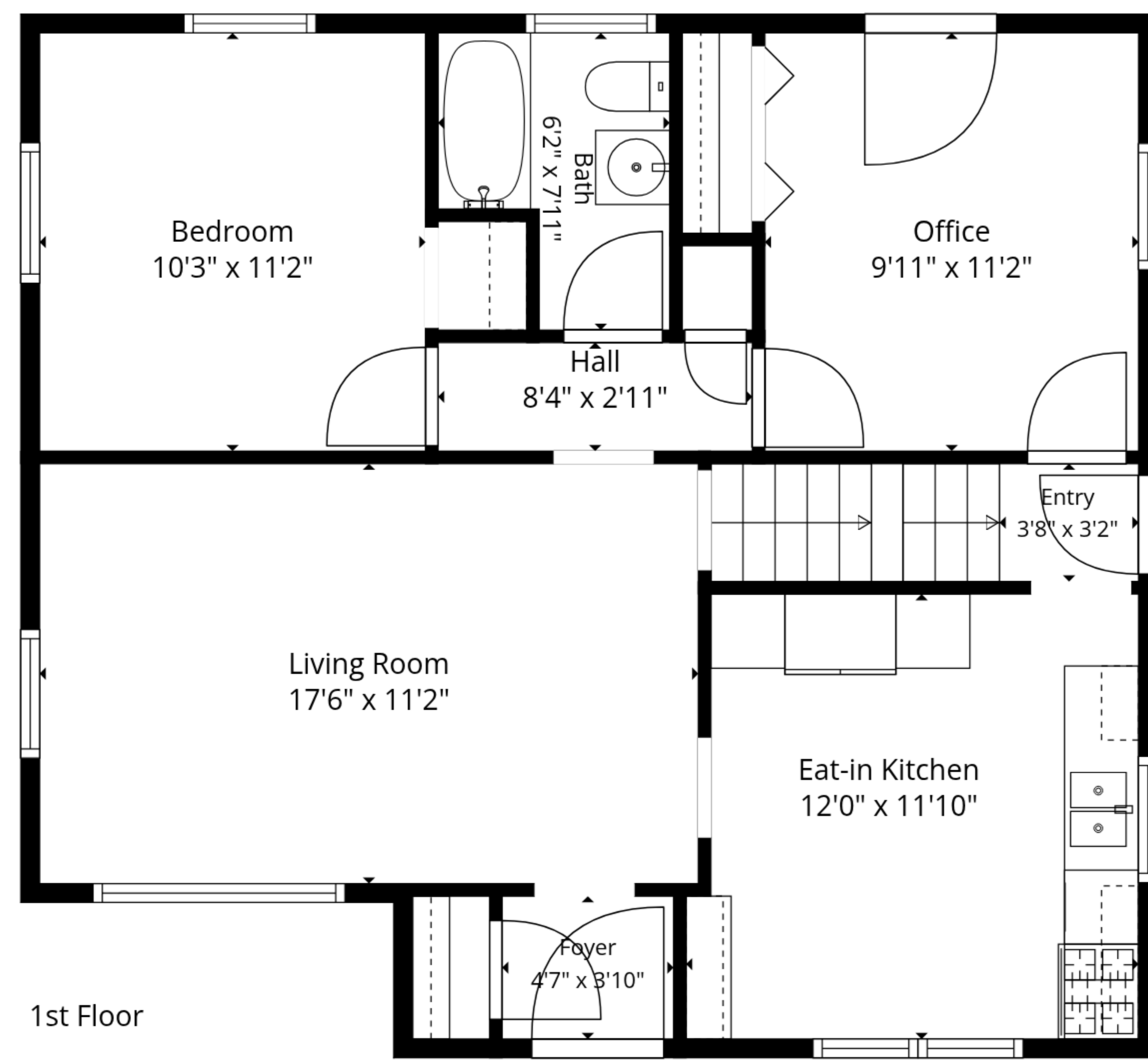
Basement: 0 sq. ft, 1st floor: 741 sq. ft, 2nd floor: 182 sq. ft

EXCLUDED AREAS: BASEMENT: 741 sq. ft, LOW CEILING: 104 sq. ft, WALLS: 157 sq. ft



Bonus Room
29'4" x 10'2"

TOTAL: 923 sq. ft
Basement: 0 sq. ft, 1st floor: 741 sq. ft, 2nd floor: 182 sq. ft
EXCLUDED AREAS: BASEMENT: 741 sq. ft, LOW CEILING: 104 sq. ft, WALLS: 157 sq. ft



TOTAL: 923 sq. ft
 Basement: 0 sq. ft, 1st floor: 741 sq. ft, 2nd floor: 182 sq. ft
 EXCLUDED AREAS: BASEMENT: 741 sq. ft, LOW CEILING: 104 sq. ft, WALLS: 157 sq. ft