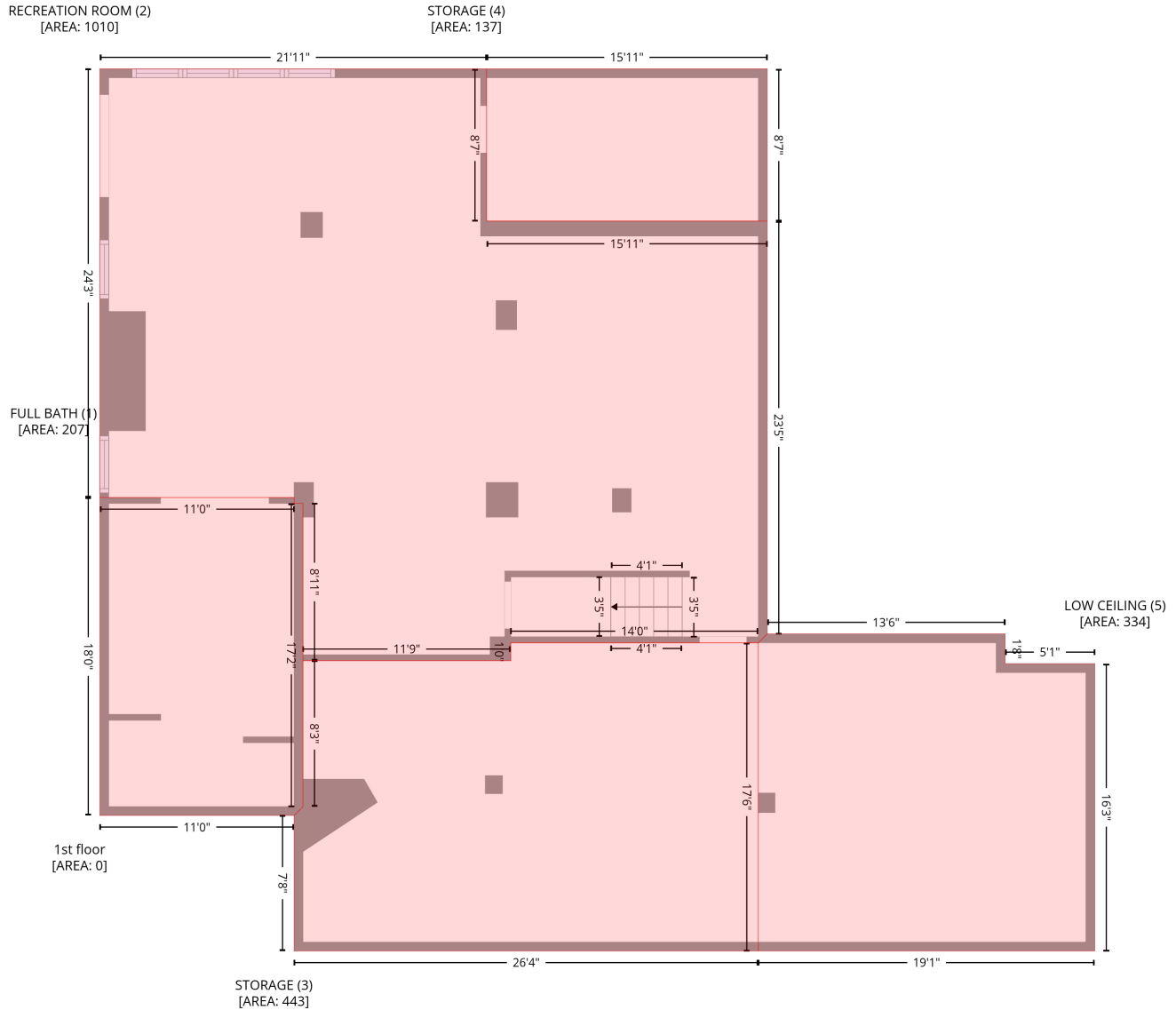


1013 14th Ave Dr NW, Hickory, NC, US

Gross Living Area: 4306 sq. ft

Level 1



Space	Area (sq. ft)	Calculation <small>Coordinate Polygon Area Algorithm using inches</small>
FULL BATH (Non-living area)	207	$-((149.5 + 149.5) * (322.3 - 326.3) + (149.5 + 155.5) * (326.3 - 326.3) + (155.5 + 155.5) * (326.3 - 532.4) + (155.5 + 149.5) * (532.4 - 538.4) + (149.5 + 17.4) * (538.4 - 538.4) + (17.4 + 17.4) * (538.4 - 322.3) + (17.4 + 149.5) * (322.3 - 322.3)) * 0.5 * 0.00694$
RECREATION ROOM (Non-living area)	1010	$-((280.4 + 280.4) * (30.8 - 134.3) + (280.4 + 471.3) * (134.3 - 134.3) + (471.3 + 471.3) * (134.3 - 415) + (471.3 + 465.3) * (415 - 421) + (465.3 + 296.9) * (421 - 421) + (296.9 + 296.9) * (421 - 433.2) + (296.9 + 155.5) * (433.2 - 433.2) + (155.5 + 155.5) * (433.2 - 326.3) + (155.5 + 149.5) * (326.3 - 326.3) + (149.5 + 149.5) * (326.3 - 322.3) + (149.5 + 17.4) * (322.3 - 322.3) + (17.4 + 17.4) * (322.3 - 30.8) + (17.4 + 280.4) * (30.8 - 30.8)) * 0.5 * 0.00694$

1013 14th Ave Dr NW,Hickory,NC,US

Gross Living Area: 4306 sq. ft

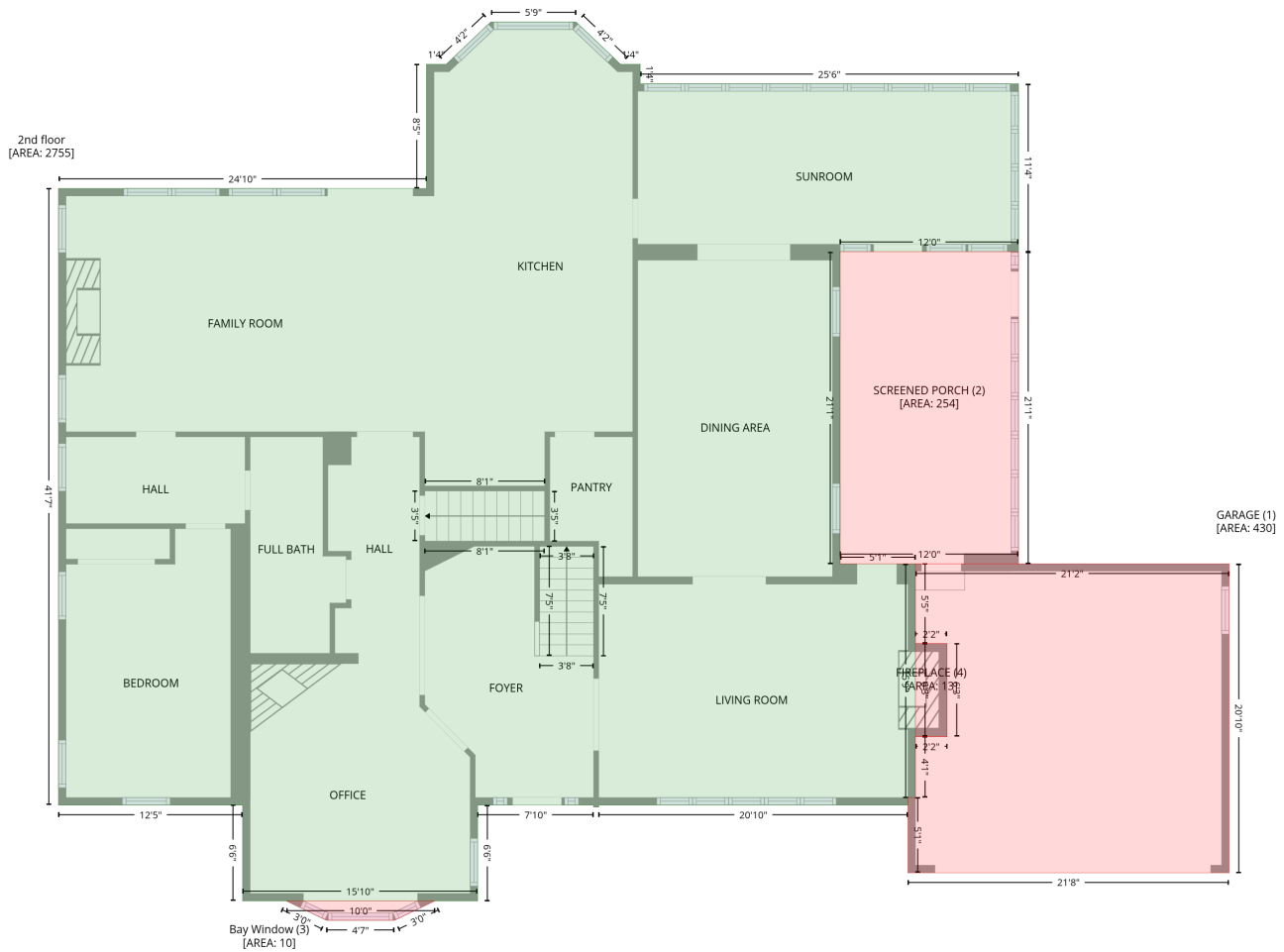
Level 1

Space	Area (sq. ft)	Calculation <small>Coordinate Polygon Area Algorithm using inches</small>
STORAGE (Non-living area)	443	$-\left((465.3 + 465.3) * (421 - 630.6) + (465.3 + 149.5) * (630.6 - 630.6) + (149.5 + 149.5) * (630.6 - 538.4) + (149.5 + 155.5) * (538.4 - 532.4) + (155.5 + 155.5) * (532.4 - 433.2) + (155.5 + 296.9) * (433.2 - 433.2) + (296.9 + 296.9) * (433.2 - 421) + (296.9 + 465.3) * (421 - 421)\right) * 0.5 * 0.00694$
STORAGE (Non-living area)	137	$-\left((471.3 + 471.3) * (30.8 - 134.3) + (471.3 + 280.4) * (134.3 - 134.3) + (280.4 + 280.4) * (134.3 - 30.8) + (280.4 + 471.3) * (30.8 - 30.8)\right) * 0.5 * 0.00694$
LOW CEILING (Non-living area)	334	$-\left((633.1 + 633.1) * (415 - 435.3) + (633.1 + 694.1) * (435.3 - 435.3) + (694.1 + 694.1) * (435.3 - 630.6) + (694.1 + 465.3) * (630.6 - 630.6) + (465.3 + 465.3) * (630.6 - 421) + (465.3 + 471.3) * (421 - 415) + (471.3 + 633.1) * (415 - 415)\right) * 0.5 * 0.00694$

1013 14th Ave Dr NW, Hickory, NC, US

Gross Living Area: 4306 sq. ft

Level 2



Space	Area (sq. ft)	Calculation
2nd floor (Living area)	2755	$-\left((419.3 + 455.5) * (-3.4 - 30.8) + (455.5 + 471.3) * (30.8 - 30.8) + (471.3 + 471.3) * (30.8 - 46.7) + (471.3 + 777.6) * (46.7 - 46.7) + (777.6 + 777.6) * (46.7 - 182.5) + (777.6 + 633.1) * (182.5 - 182.5) + (633.1 + 633.1) * (182.5 - 435.3) + (633.1 + 694.1) * (435.3 - 435.3) + (694.1 + 694.1) * (435.3 - 624.6) + (694.1 + 688.1) * (624.6 - 624.6) + (688.1 + 688.1) * (624.6 - 630.6) + (688.1 + 437.7) * (630.6 - 630.6) + (437.7 + 437.7) * (630.6 - 632.3) + (437.7 + 433.7) * (632.3 - 632.3) + (433.7 + 433.7) * (632.3 - 630.6) + (433.7 + 339.7) * (630.6 - 630.6) + (339.7 + 339.7) * (630.6 - 708.3) + (339.7 + 149.5) * (708.3 - 708.3) + (149.5 + 149.5) * (708.3 - 630.6) + (149.5 + 0.4) * (630.6 - 630.6) + (0.4 + 0.4) * (630.6 - 131.4) + (0.4 + 298.3) * (131.4 - 131.4) + (298.3 + 298.3) * (131.4 - 30.8) + (298.3 + 314.2) * (30.8 - 30.8) + (314.2 + 350.4) * (30.8 - -3.4) + (350.4 + 419.3) * (-3.4 - -3.4)\right) * 0.5 * 0.00694$
GARAGE (Non-living area)	430	$-\left((948 + 948) * (435.3 - 685.4) + (948 + 688.1) * (685.4 - 685.4) + (688.1 + 688.1) * (685.4 - 624.6) + (688.1 + 694.1) * (624.6 - 624.6) + (694.1 + 694.1) * (624.6 - 575.2) + (694.1 + 719.7) * (575.2 - 575.2) + (719.7 + 719.7) * (575.2 - 499.9) + (719.7 + 694.1) * (499.9 - 499.9) + (694.1 + 694.1) * (499.9 - 435.3) + (694.1 + 948) * (435.3 - 435.3)\right) * 0.5 * 0.00694$
SCREENED PORCH (Non-living area)	254	$-\left((777.6 + 777.6) * (182.5 - 435.3) + (777.6 + 633.1) * (435.3 - 435.3) + (633.1 + 633.1) * (435.3 - 182.5) + (633.1 + 777.6) * (182.5 - 182.5)\right) * 0.5 * 0.00694$

1013 14th Ave Dr NW, Hickory, NC, US

Gross Living Area: 4306 sq. ft

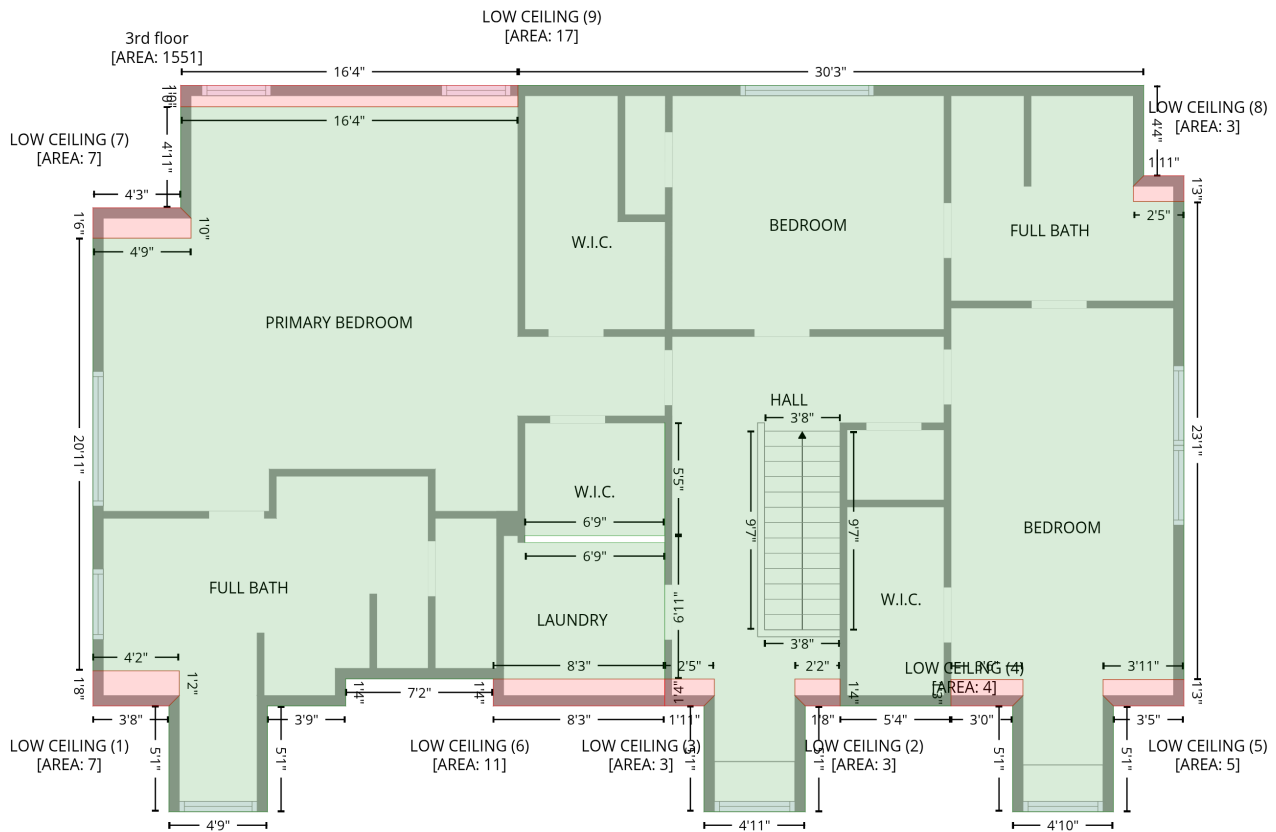
Level 2

Space	Area (sq. ft)	Calculation <small>Coordinate Polygon Area Algorithm using inches</small>
Bay Window (Non-living area)	10	$-\left((305.1 + 272.4) * (708.3 - 723.9) + (272.4 + 217.4) * (723.9 - 723.9) + (217.4 + 184.8) * (723.9 - 708.3) + (184.8 + 305.1) * (708.3 - 708.3)\right) * 0.5 * 0.00694$
FIREPLACE (Non-living area)	13	$-\left((719.7 + 719.7) * (499.9 - 575.2) + (719.7 + 694.1) * (575.2 - 575.2) + (694.1 + 694.1) * (575.2 - 499.9) + (694.1 + 719.7) * (499.9 - 499.9)\right) * 0.5 * 0.00694$

1013 14th Ave Dr NW, Hickory, NC, US

Gross Living Area: 4306 sq. ft

Level 3



Space	Area (sq. ft)	Calculation
3rd floor (Living area)	1551	$ \begin{aligned} & -((609.7 + 609.7) * (176.5 - 229) + (609.7 + 603.7) * (229 - 235) + (603.7 + 603.7) * (235 - 243.8) \\ & + (603.7 + 633.1) * (243.8 - 243.8) + (633.1 + 633.1) * (243.8 - 521.1) + (633.1 + 586.2) * (521.1 - \\ & 521.1) + (586.2 + 586.2) * (521.1 - 530.4) + (586.2 + 592.2) * (530.4 - 536.4) + (592.2 + 592.2) * \\ & (536.4 - 597.7) + (592.2 + 533.8) * (597.7 - 597.7) + (533.8 + 533.8) * (597.7 - 536.4) + (533.8 + \\ & 539.8) * (536.4 - 530.4) + (539.8 + 539.8) * (530.4 - 521.1) + (539.8 + 498) * (521.1 - 521.1) + \\ & (498 + 498) * (521.1 - 536.4) + (498 + 433.7) * (536.4 - 536.4) + (433.7 + 433.7) * (536.4 - 520.8) \\ & + (433.7 + 407.5) * (520.8 - 520.8) + (407.5 + 407.5) * (520.8 - 530.4) + (407.5 + 413.5) * (530.4 - \\ & 536.4) + (413.5 + 413.5) * (536.4 - 597.7) + (413.5 + 354.8) * (597.7 - 597.7) + (354.8 + 354.8) * \\ & (597.7 - 536.4) + (354.8 + 360.8) * (536.4 - 530.4) + (360.8 + 360.8) * (530.4 - 520.8) + (360.8 + \\ & 332) * (520.8 - 520.8) + (332 + 332.1) * (520.8 - 437.6) + (332.1 + 332.1) * (437.6 - 372.3) + \\ & (332.1 + 332) * (372.3 - 372.3) + (332 + 332) * (372.3 - 437.6) + (332 + 250.9) * (437.6 - 437.6) + \\ & (250.9 + 250.9) * (437.6 - 441.6) + (250.9 + 332) * (441.6 - 441.6) + (332 + 332) * (441.6 - 520.8) \\ & + (332 + 232.6) * (520.8 - 520.8) + (232.6 + 232.6) * (520.8 - 520.7) + (232.6 + 147) * (520.7 - \\ & 520.7) + (147 + 147) * (520.7 - 536.4) + (147 + 101.7) * (536.4 - 536.4) + (101.7 + 101.7) * \\ & (536.4 - 597.7) + (101.7 + 44.5) * (597.7 - 597.7) + (44.5 + 44.5) * (597.7 - 536.4) + (44.5 + 50.5) \\ & * (536.4 - 530.4) + (50.5 + 50.5) * (530.4 - 516) + (50.5 + 0.4) * (516 - 516) + (0.4 + 0.4) * (516 - \\ & 265.2) + (0.4 + 57.3) * (265.2 - 265.2) + (57.3 + 57.3) * (265.2 - 253.6) + (57.3 + 51.3) * (253.6 - \\ & 247.6) + (51.3 + 51.3) * (247.6 - 189) + (51.3 + 246.9) * (189 - 189) + (246.9 + 246.9) * (189 - \\ & 176.5) + (246.9 + 609.7) * (176.5 - 176.5) * 0.5 * 0.00694 \end{aligned} $
LOW CEILING (Non-living area)	7	$ \begin{aligned} & -((50.5 + 50.5) * (516 - 530.4) + (50.5 + 44.5) * (530.4 - 536.4) + (44.5 + 0.4) * (536.4 - 536.4) + \\ & (0.4 + 0.4) * (536.4 - 516) + (0.4 + 50.5) * (516 - 516) * 0.5 * 0.00694 \end{aligned} $

1013 14th Ave Dr NW,Hickory,NC,US

Gross Living Area: 4306 sq. ft

Level 3

Space	Area (sq. ft)	Calculation <small>Coordinate Polygon Area Algorithm using inches</small>
LOW CEILING (Non-living area)	3	$-\left((433.7 + 433.7) * (520.8 - 536.4) + (433.7 + 413.5) * (536.4 - 536.4) + (413.5 + 407.5) * (536.4 - 530.4) + (407.5 + 407.5) * (530.4 - 520.8) + (407.5 + 433.7) * (520.8 - 520.8)\right) * 0.5 * 0.00694$
LOW CEILING (Non-living area)	3	$-\left((332 + 360.8) * (520.8 - 520.8) + (360.8 + 360.8) * (520.8 - 530.4) + (360.8 + 354.8) * (530.4 - 536.4) + (354.8 + 332) * (536.4 - 536.4) + (332 + 332) * (536.4 - 520.8)\right) * 0.5 * 0.00694$
LOW CEILING (Non-living area)	4	$-\left((539.8 + 539.8) * (521.1 - 530.4) + (539.8 + 533.8) * (530.4 - 536.4) + (533.8 + 498) * (536.4 - 536.4) + (498 + 498) * (536.4 - 521.1) + (498 + 539.8) * (521.1 - 521.1)\right) * 0.5 * 0.00694$
LOW CEILING (Non-living area)	5	$-\left((633.1 + 633.1) * (521.1 - 536.4) + (633.1 + 592.2) * (536.4 - 536.4) + (592.2 + 586.2) * (536.4 - 530.4) + (586.2 + 586.2) * (530.4 - 521.1) + (586.2 + 633.1) * (521.1 - 521.1)\right) * 0.5 * 0.00694$
LOW CEILING (Non-living area)	11	$-\left((332 + 332) * (520.8 - 536.4) + (332 + 232.6) * (536.4 - 536.4) + (232.6 + 232.6) * (536.4 - 520.8) + (232.6 + 332) * (520.8 - 520.8)\right) * 0.5 * 0.00694$
LOW CEILING (Non-living area)	7	$-\left((51.3 + 57.3) * (247.6 - 253.6) + (57.3 + 57.3) * (253.6 - 265.2) + (57.3 + 0.4) * (265.2 - 265.2) + (0.4 + 0.4) * (265.2 - 247.6) + (0.4 + 51.3) * (247.6 - 247.6)\right) * 0.5 * 0.00694$
LOW CEILING (Non-living area)	3	$-\left((633.1 + 633.1) * (229 - 243.8) + (633.1 + 603.7) * (243.8 - 243.8) + (603.7 + 603.7) * (243.8 - 235) + (603.7 + 609.7) * (235 - 229) + (609.7 + 633.1) * (229 - 229)\right) * 0.5 * 0.00694$
LOW CEILING (Non-living area)	17	$-\left((246.9 + 246.9) * (176.5 - 189) + (246.9 + 51.3) * (189 - 189) + (51.3 + 51.3) * (189 - 176.5) + (51.3 + 246.9) * (176.5 - 176.5)\right) * 0.5 * 0.00694$