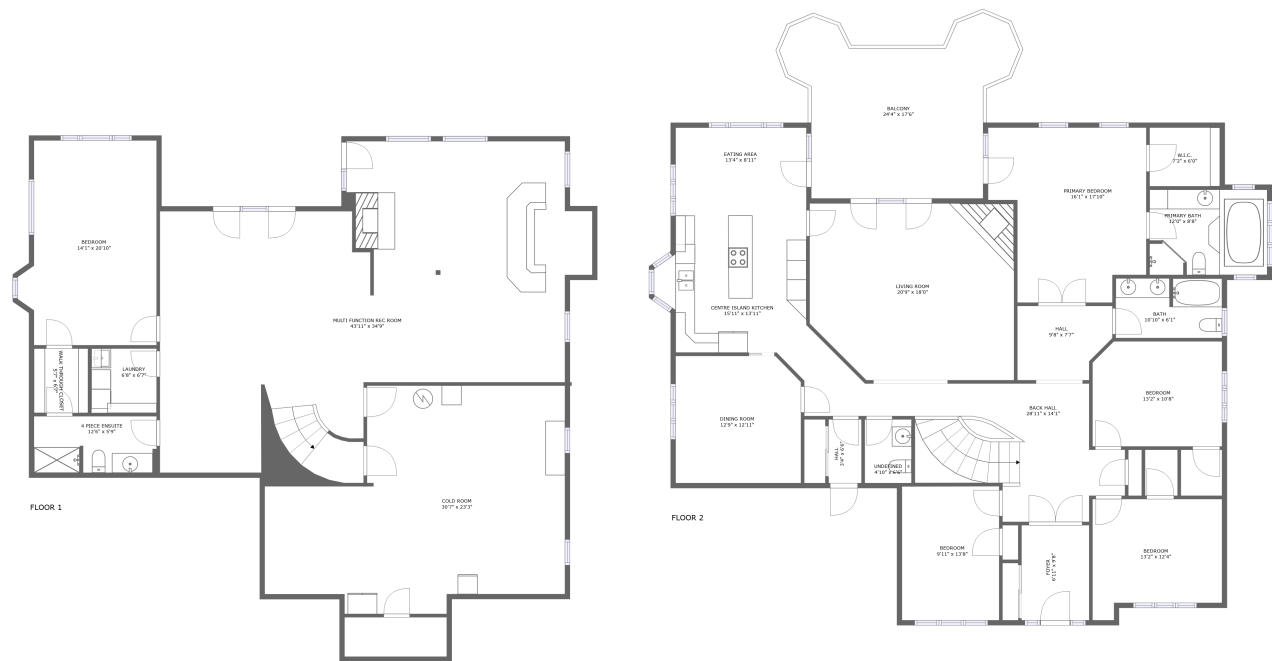


Home report

1266 Barnwell Crescent, Navan, Navan, Ontario, Canada, K4B 1K4




Total Area: 3896 sq. ft

Floor 1: 1545 sq. ft, Floor 2: 2351 sq. ft

Excluded: Undefined 45 sq. ft, Cold room 562 sq. ft, Balcony 321 sq. ft, Walls: 239 sq. ft

Property summary

 **2** Floors

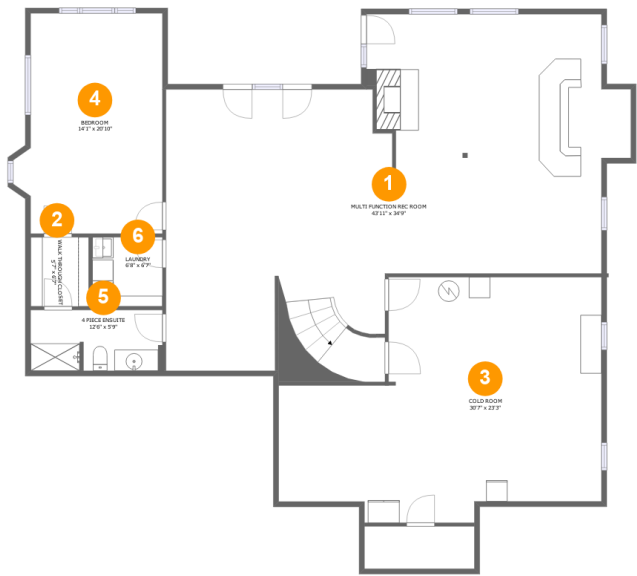
 **5** Bedrooms

 **3** Bathrooms

 **1** Half baths

Home report

1266 Barnwell Crescent, Navan, Navan, Ontario, Canada, K4B 1K4



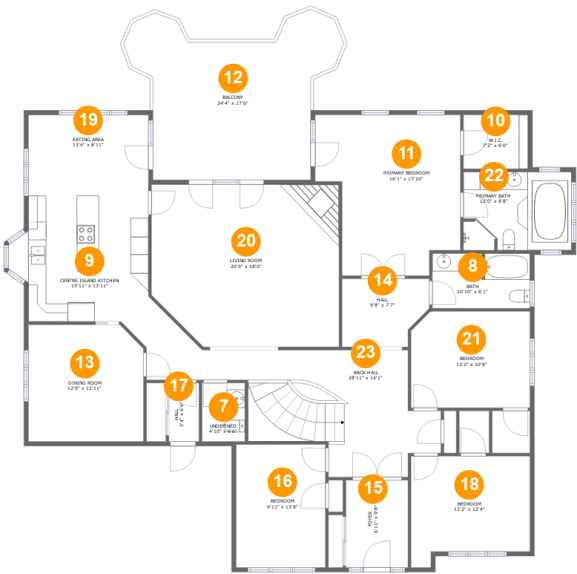
Room dimensions

Floor 1 Total:1545sqft Excluded: 607sqft

#		Max Dimensions	sqft	Included
1	Multi Function Rec Room	43'11" x 34'9"	1087 sq. ft	Yes
2	Walk Through Closet	5'7" x 6'7"	36 sq. ft	Yes
3	Cold Room	30'7" x 23'3"	562 sq. ft	No
4	Bedroom	14'1" x 20'10"	266 sq. ft	Yes
5	4 Piece Ensuite	12'6" x 5'9"	71 sq. ft	Yes
6	Laundry	6'8" x 6'7"	43 sq. ft	Yes

Home report

1266 Barnwell Crescent, Navan, Navan, Ontario, Canada, K4B 1K4



Room dimensions

Floor 2

Total:2351sqft Excluded: 321sqft

#		Max Dimensions	sqft	Included
7	Undefined	4'10" x 6'6"	31 sq. ft	Yes
8	Bath	10'10" x 6'1"	65 sq. ft	Yes
9	Centre Island Kitchen	15'11" x 13'11"	199 sq. ft	Yes
10	W.I.C.	7'2" x 6'0"	43 sq. ft	Yes
11	Primary Bedroom	16'1" x 17'10"	246 sq. ft	Yes
12	Balcony	24'4" x 17'6"	321 sq. ft	No
13	Dining Room	12'9" x 12'11"	162 sq. ft	Yes
14	Hall	9'8" x 7'7"	66 sq. ft	Yes
15	Foyer	6'11" x 9'8"	67 sq. ft	Yes
16	Bedroom	9'11" x 13'8"	135 sq. ft	Yes
17	Hall	3'4" x 6'6"	22 sq. ft	Yes

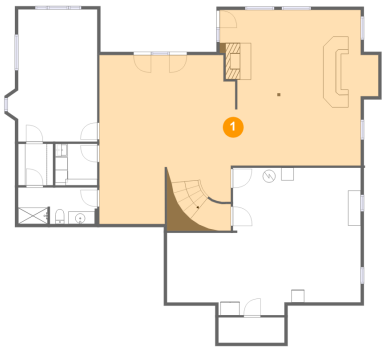
Home report

1266 Barnwell Crescent, Navan, Navan, Ontario, Canada, K4B 1K4

#		Max Dimensions	sqft	Included
18	Bedroom	13'2" x 12'4"	143 sq. ft	Yes
19	Eating Area	13'4" x 8'11"	119 sq. ft	Yes
20	Living Room	20'9" x 18'0"	357 sq. ft	Yes
21	Bedroom	13'2" x 10'8"	139 sq. ft	Yes
22	Primary Bath	12'0" x 8'8"	103 sq. ft	Yes
23	Back Hall	28'11" x 14'1"	287 sq. ft	Yes

1266 Barnwell Crescent, Navan, Navan, Ontario, Canada, K4B 1K4

1 Floor 1 - Multi Function Rec Room



Max Dimensions: 43'11" x 34'9"
Calculated Area: 1087 sq. ft
Included: Yes

Heated: Yes
Finished: Yes
Enclosed: Yes
Contiguous: Yes
Permitted: Yes
Wet space: No
Addition: No
Conversion: No

2 Floor 1 - Walk Through Closet



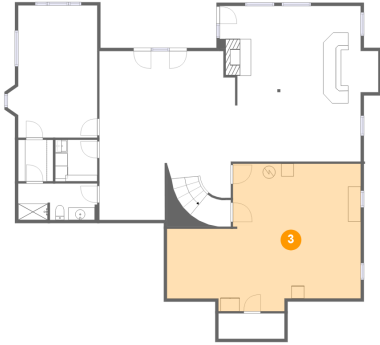
Max Dimensions: 5'7" x 6'7"
Calculated Area: 36 sq. ft
Included: Yes

Heated: Yes
Finished: Yes
Enclosed: Yes
Contiguous: Yes
Permitted: Yes
Wet space: No
Addition: No
Conversion: No

Home report

1266 Barnwell Crescent, Navan, Navan, Ontario, Canada, K4B 1K4

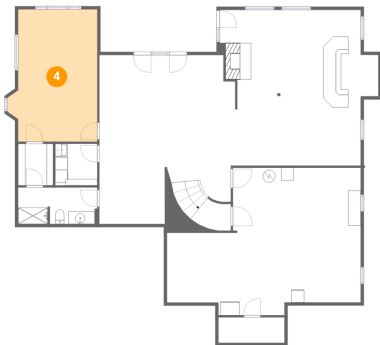
3 Floor 1 - Cold Room



Max Dimensions: 30'7" x 23'3"
Calculated Area: 562 sq. ft
Included: No

Heated: Yes
Finished: No
Enclosed: Yes
Contiguous: Yes
Permitted: Yes
Wet space: No
Addition: No
Conversion: No

4 Floor 1 - Bedroom



Max Dimensions: 14'1" x 20'10"
Calculated Area: 266 sq. ft
Included: Yes

Heated: Yes
Finished: Yes
Enclosed: Yes
Contiguous: Yes
Permitted: Yes
Wet space: No
Addition: No
Conversion: No

5 Floor 1 - 4 Piece Ensuite



Max Dimensions: 12'6" x 5'9"
Calculated Area: 71 sq. ft
Included: Yes

Heated: Yes
Finished: Yes
Enclosed: Yes
Contiguous: Yes
Permitted: Yes
Wet space: Yes
Addition: No
Conversion: No

1266 Barnwell Crescent, Navan, Navan, Ontario, Canada, K4B 1K4

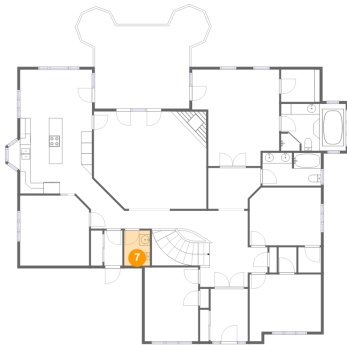
6 Floor 1 - Laundry



Max Dimensions: 6'8" x 6'7"
Calculated Area: 43 sq. ft
Included: Yes

Heated: Yes
Finished: Yes
Enclosed: Yes
Contiguous: Yes
Permitted: Yes
Wet space: No
Addition: No
Conversion: No

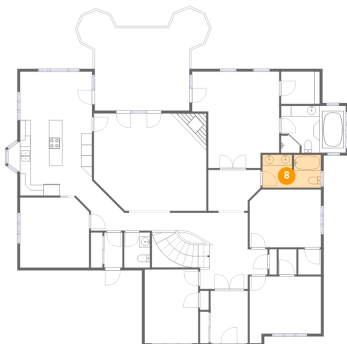
7 Floor 2 - Undefined



Max Dimensions: 4'10" x 6'6"
Calculated Area: 31 sq. ft
Included: Yes

Heated: Yes
Finished: Yes
Enclosed: Yes
Contiguous: Yes
Permitted: Yes
Wet space: Yes
Addition: No
Conversion: No

8 Floor 2 - Bath

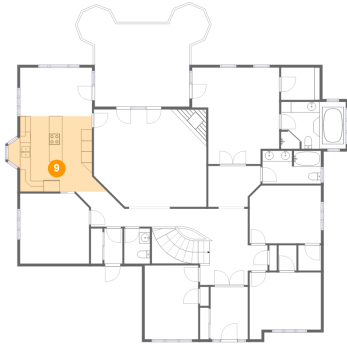


Max Dimensions: 10'10" x 6'1"
Calculated Area: 65 sq. ft
Included: Yes

Heated: Yes
Finished: Yes
Enclosed: Yes
Contiguous: Yes
Permitted: Yes
Wet space: Yes
Addition: No
Conversion: No

1266 Barnwell Crescent, Navan, Navan, Ontario, Canada, K4B 1K4

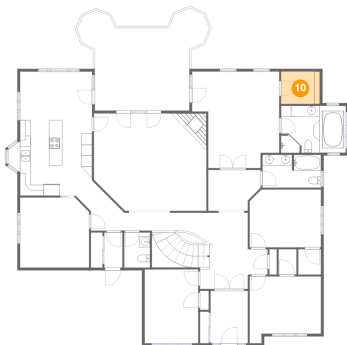
9 Floor 2 - Centre Island Kitchen



Max Dimensions: 15'11" x 13'11"
Calculated Area: 199 sq. ft
Included: Yes

Heated: Yes
Finished: Yes
Enclosed: Yes
Contiguous: Yes
Permitted: Yes
Wet space: No
Addition: No
Conversion: No

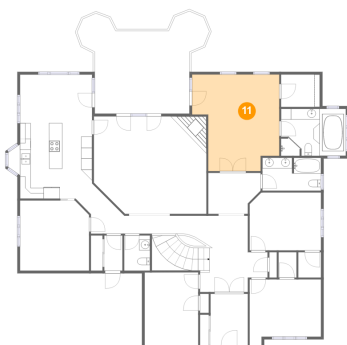
10 Floor 2 - W.I.C.



Max Dimensions: 7'2" x 6'0"
Calculated Area: 43 sq. ft
Included: Yes

Heated: Yes
Finished: Yes
Enclosed: Yes
Contiguous: Yes
Permitted: Yes
Wet space: No
Addition: No
Conversion: No

11 Floor 2 - Primary Bedroom

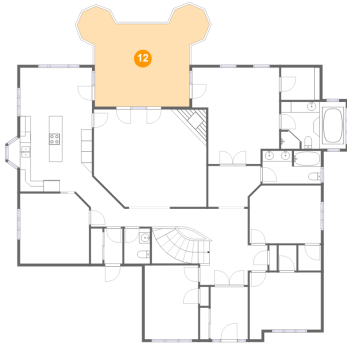


Max Dimensions: 16'1" x 17'10"
Calculated Area: 246 sq. ft
Included: Yes

Heated: Yes
Finished: Yes
Enclosed: Yes
Contiguous: Yes
Permitted: Yes
Wet space: No
Addition: No
Conversion: No

1266 Barnwell Crescent, Navan, Navan, Ontario, Canada, K4B 1K4

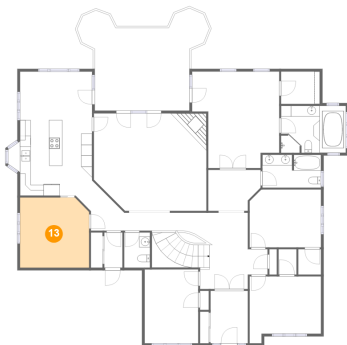
12 Floor 2 - Balcony



Max Dimensions: 24'4" x 17'6"
Calculated Area: 321 sq. ft
Included: No

Heated: No
Finished: Yes
Enclosed: No
Contiguous: Yes
Permitted: Yes
Wet space: No
Addition: No
Conversion: No

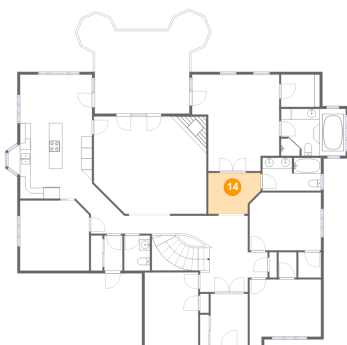
13 Floor 2 - Dining Room



Max Dimensions: 12'9" x 12'11"
Calculated Area: 162 sq. ft
Included: Yes

Heated: Yes
Finished: Yes
Enclosed: Yes
Contiguous: Yes
Permitted: Yes
Wet space: No
Addition: No
Conversion: No

14 Floor 2 - Hall

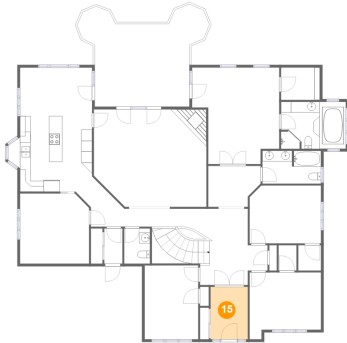


Max Dimensions: 9'8" x 7'7"
Calculated Area: 66 sq. ft
Included: Yes

Heated: Yes
Finished: Yes
Enclosed: Yes
Contiguous: Yes
Permitted: Yes
Wet space: No
Addition: No
Conversion: No

1266 Barnwell Crescent, Navan, Navan, Ontario, Canada, K4B 1K4

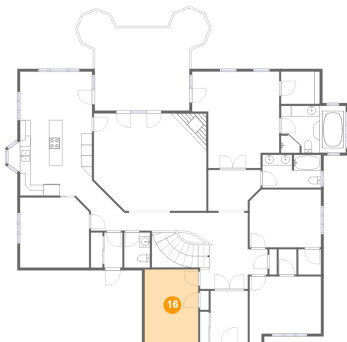
15 Floor 2 - Foyer



Max Dimensions: 6'11" x 9'8"
Calculated Area: 67 sq. ft
Included: Yes

Heated: Yes
Finished: Yes
Enclosed: Yes
Contiguous: Yes
Permitted: Yes
Wet space: No
Addition: No
Conversion: No

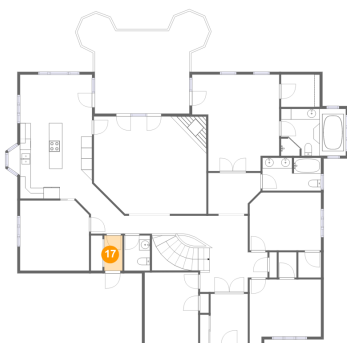
16 Floor 2 - Bedroom



Max Dimensions: 9'11" x 13'8"
Calculated Area: 135 sq. ft
Included: Yes

Heated: Yes
Finished: Yes
Enclosed: Yes
Contiguous: Yes
Permitted: Yes
Wet space: No
Addition: No
Conversion: No

17 Floor 2 - Hall

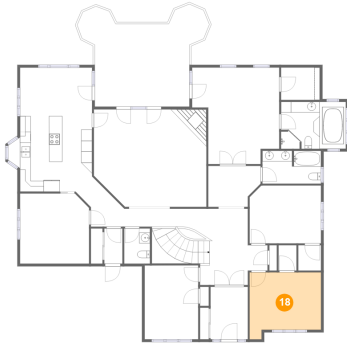


Max Dimensions: 3'4" x 6'6"
Calculated Area: 22 sq. ft
Included: Yes

Heated: Yes
Finished: Yes
Enclosed: Yes
Contiguous: Yes
Permitted: Yes
Wet space: No
Addition: No
Conversion: No

1266 Barnwell Crescent, Navan, Navan, Ontario, Canada, K4B 1K4

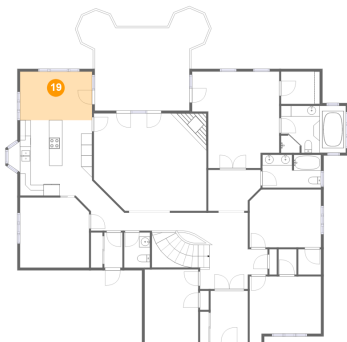
18 Floor 2 - Bedroom



Max Dimensions: 13'2" x 12'4"
Calculated Area: 143 sq. ft
Included: Yes

Heated: Yes
Finished: Yes
Enclosed: Yes
Contiguous: Yes
Permitted: Yes
Wet space: No
Addition: No
Conversion: No

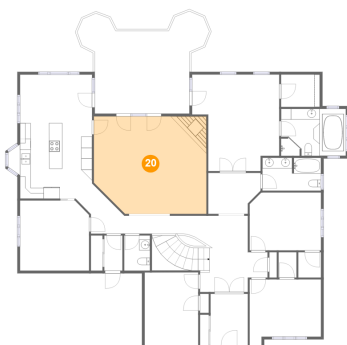
19 Floor 2 - Eating Area



Max Dimensions: 13'4" x 8'11"
Calculated Area: 119 sq. ft
Included: Yes

Heated: Yes
Finished: Yes
Enclosed: Yes
Contiguous: Yes
Permitted: Yes
Wet space: No
Addition: No
Conversion: No

20 Floor 2 - Living Room

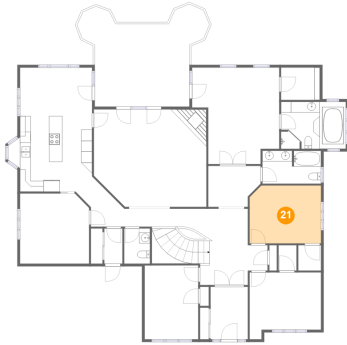


Max Dimensions: 20'9" x 18'0"
Calculated Area: 357 sq. ft
Included: Yes

Heated: Yes
Finished: Yes
Enclosed: Yes
Contiguous: Yes
Permitted: Yes
Wet space: No
Addition: No
Conversion: No

1266 Barnwell Crescent, Navan, Navan, Ontario, Canada, K4B 1K4

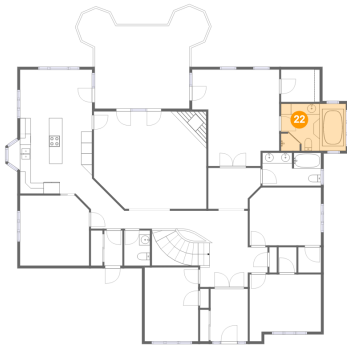
21 Floor 2 - Bedroom



Max Dimensions: 13'2" x 10'8"
Calculated Area: 139 sq. ft
Included: Yes

Heated: Yes
Finished: Yes
Enclosed: Yes
Contiguous: Yes
Permitted: Yes
Wet space: No
Addition: No
Conversion: No

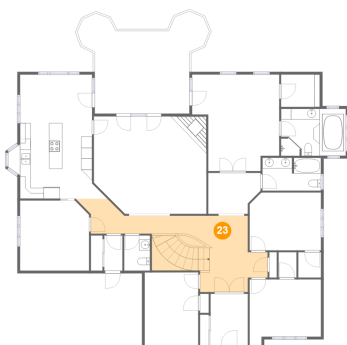
22 Floor 2 - Primary Bath



Max Dimensions: 12'0" x 8'8"
Calculated Area: 103 sq. ft
Included: Yes

Heated: Yes
Finished: Yes
Enclosed: Yes
Contiguous: Yes
Permitted: Yes
Wet space: Yes
Addition: No
Conversion: No

23 Floor 2 - Back Hall



Max Dimensions: 28'11" x 14'1"
Calculated Area: 287 sq. ft
Included: Yes

Heated: Yes
Finished: Yes
Enclosed: Yes
Contiguous: Yes
Permitted: Yes
Wet space: No
Addition: No
Conversion: No