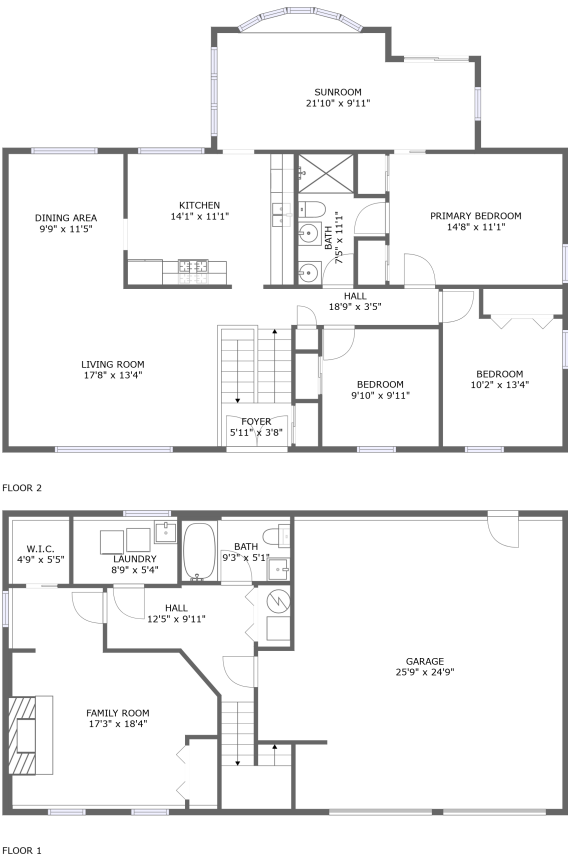


Home report

1341 Kenilworth Avenue, Palatine, Cook County, Illinois, United States, 60074




**Total Area: 1944 sq. ft**  
Floor 1: 566 sq. ft, Floor 2: 1378 sq. ft  
Excluded: Garage 584 sq. ft, Walls: 167 sq. ft

Property summary

 **2** Floors

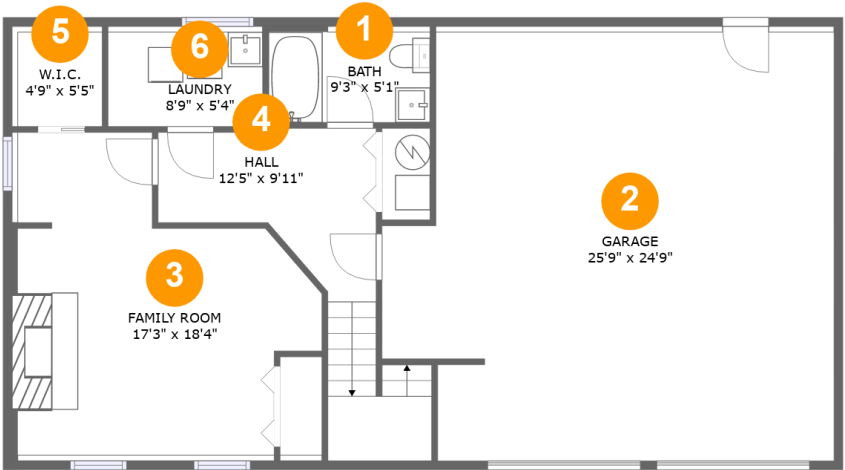
 **3** Bedrooms

 **2** Bathrooms

 **1** Garages

Home report

1341 Kenilworth Avenue, Palatine, Cook County, Illinois, United States, 60074



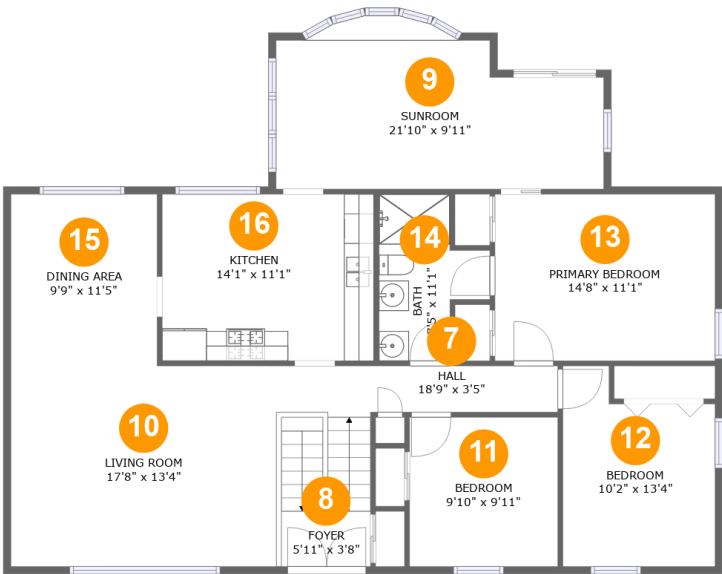
Room dimensions

Floor 1 Total:566sqft    Excluded: 584sqft

#		Max Dimensions	sqft	Included
1	Bath	9'3" x 5'1"	50 sq. ft	Yes
2	Garage	25'9" x 24'9"	584 sq. ft	No
3	Family Room	17'3" x 18'4"	254 sq. ft	Yes
4	Hall	12'5" x 9'11"	126 sq. ft	Yes
5	W.I.C.	4'9" x 5'5"	29 sq. ft	Yes
6	Laundry	8'9" x 5'4"	50 sq. ft	Yes

Home report

1341 Kenilworth Avenue, Palatine, Cook County, Illinois, United States, 60074



Room dimensions

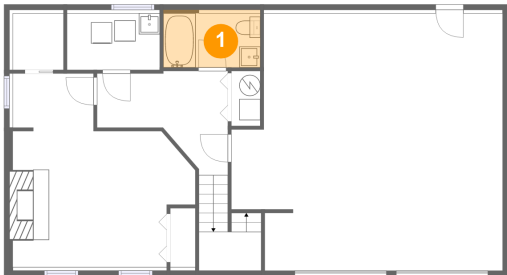
Floor 2

Total:1378sqft

Excluded: 0sqft

#		Max Dimensions	sqft	Included
7	Hall	18'9" x 3'5"	99 sq. ft	Yes
8	Foyer	5'11" x 3'8"	23 sq. ft	Yes
9	Sunroom	21'10" x 9'11"	209 sq. ft	Yes
10	Living Room	17'8" x 13'4"	236 sq. ft	Yes
11	Bedroom	9'10" x 9'11"	98 sq. ft	Yes
12	Bedroom	10'2" x 13'4"	117 sq. ft	Yes
13	Primary Bedroom	14'8" x 11'1"	163 sq. ft	Yes
14	Bath	7'5" x 11'1"	61 sq. ft	Yes
15	Dining Area	9'9" x 11'5"	111 sq. ft	Yes
16	Kitchen	14'1" x 11'1"	156 sq. ft	Yes

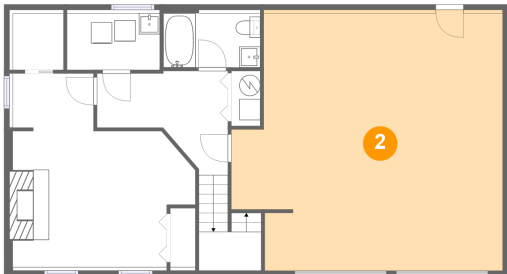
1 Floor 1 - Bath



Max Dimensions: 9'3" x 5'1"  
Calculated Area: 50 sq. ft  
Included: Yes

Heated: Yes  
Finished: Yes  
Enclosed: Yes  
Contiguous: Yes  
Permitted: Yes  
Wet space: Yes  
Addition: No  
Conversion: No

2 Floor 1 - Garage

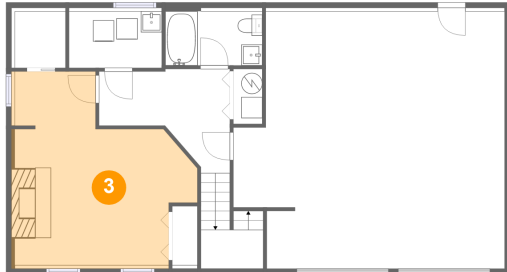


Max Dimensions: 25'9" x 24'9"  
Calculated Area: 584 sq. ft  
Included: No

Heated: No  
Finished: No  
Enclosed: Yes  
Contiguous: Yes  
Permitted: Yes  
Wet space: No  
Addition: No  
Conversion: No

1341 Kenilworth Avenue, Palatine, Cook County, Illinois, United States, 60074

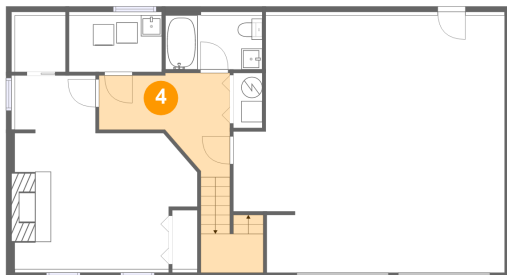
### 3 Floor 1 - Family Room



Max Dimensions: 17'3" x 18'4"  
Calculated Area: 254 sq. ft  
Included: Yes

Heated: Yes  
Finished: Yes  
Enclosed: Yes  
Contiguous: Yes  
Permitted: Yes  
Wet space: No  
Addition: No  
Conversion: No

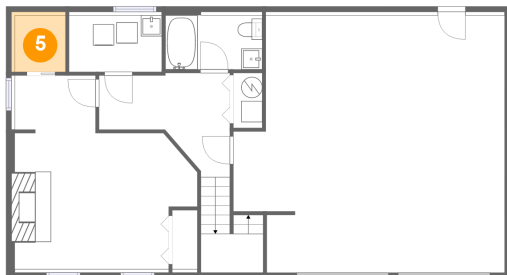
### 4 Floor 1 - Hall



Max Dimensions: 12'5" x 9'11"  
Calculated Area: 126 sq. ft  
Included: Yes

Heated: Yes  
Finished: Yes  
Enclosed: Yes  
Contiguous: Yes  
Permitted: Yes  
Wet space: No  
Addition: No  
Conversion: No

### 5 Floor 1 - W.I.C.



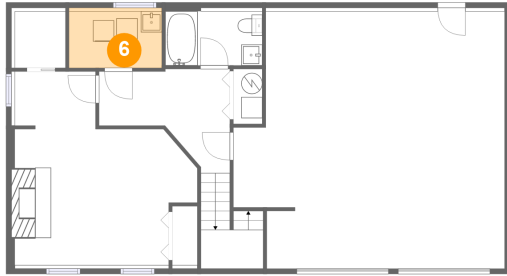
Max Dimensions: 4'9" x 5'5"  
Calculated Area: 29 sq. ft  
Included: Yes

Heated: Yes  
Finished: Yes  
Enclosed: Yes  
Contiguous: Yes  
Permitted: Yes  
Wet space: No  
Addition: No  
Conversion: No

## Home report

1341 Kenilworth Avenue, Palatine, Cook County, Illinois, United States, 60074

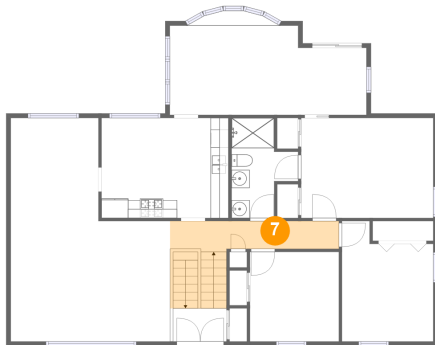
### 6 Floor 1 - Laundry



Max Dimensions: 8'9" x 5'4"  
Calculated Area: 50 sq. ft  
Included: Yes

Heated: Yes  
Finished: Yes  
Enclosed: Yes  
Contiguous: Yes  
Permitted: Yes  
Wet space: No  
Addition: No  
Conversion: No

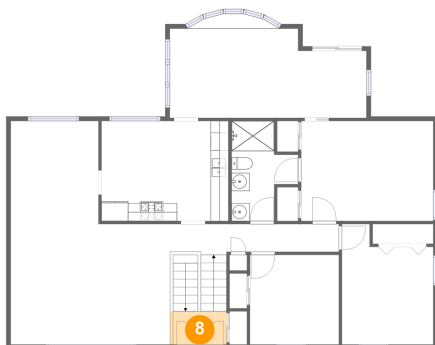
### 7 Floor 2 - Hall



Max Dimensions: 18'9" x 3'5"  
Calculated Area: 99 sq. ft  
Included: Yes

Heated: Yes  
Finished: Yes  
Enclosed: Yes  
Contiguous: Yes  
Permitted: Yes  
Wet space: No  
Addition: No  
Conversion: No

### 8 Floor 2 - Foyer

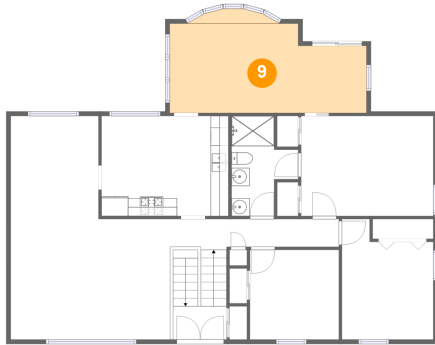


Max Dimensions: 5'11" x 3'8"  
Calculated Area: 23 sq. ft  
Included: Yes

Heated: Yes  
Finished: Yes  
Enclosed: Yes  
Contiguous: Yes  
Permitted: Yes  
Wet space: No  
Addition: No  
Conversion: No

1341 Kenilworth Avenue, Palatine, Cook County, Illinois, United States, 60074

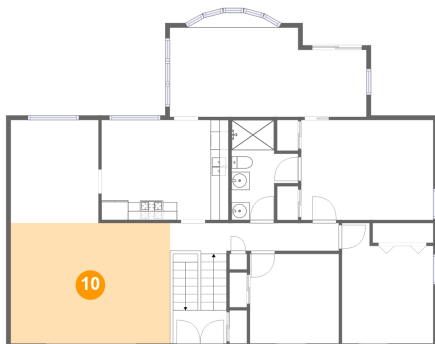
## 9 Floor 2 - Sunroom



Max Dimensions: 21'10" x 9'11"  
Calculated Area: 209 sq. ft  
Included: Yes

Heated: Yes  
Finished: Yes  
Enclosed: Yes  
Contiguous: Yes  
Permitted: Yes  
Wet space: No  
Addition: No  
Conversion: No

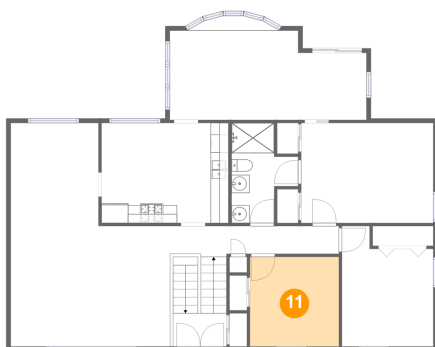
## 10 Floor 2 - Living Room



Max Dimensions: 17'8" x 13'4"  
Calculated Area: 236 sq. ft  
Included: Yes

Heated: Yes  
Finished: Yes  
Enclosed: Yes  
Contiguous: Yes  
Permitted: Yes  
Wet space: No  
Addition: No  
Conversion: No

## 11 Floor 2 - Bedroom

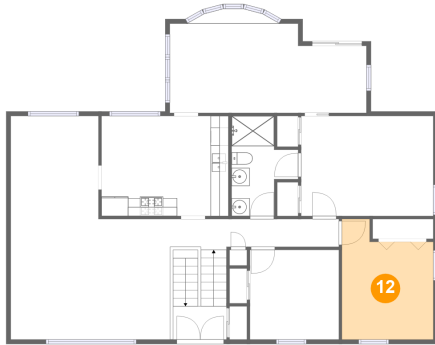


Max Dimensions: 9'10" x 9'11"  
Calculated Area: 98 sq. ft  
Included: Yes

Heated: Yes  
Finished: Yes  
Enclosed: Yes  
Contiguous: Yes  
Permitted: Yes  
Wet space: No  
Addition: No  
Conversion: No

1341 Kenilworth Avenue, Palatine, Cook County, Illinois, United States, 60074

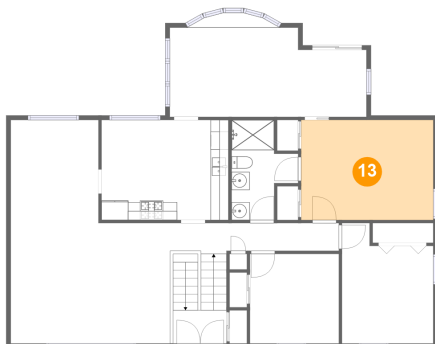
## 12 Floor 2 - Bedroom



Max Dimensions: 10'2" x 13'4"  
Calculated Area: 117 sq. ft  
Included: Yes

Heated: Yes  
Finished: Yes  
Enclosed: Yes  
Contiguous: Yes  
Permitted: Yes  
Wet space: No  
Addition: No  
Conversion: No

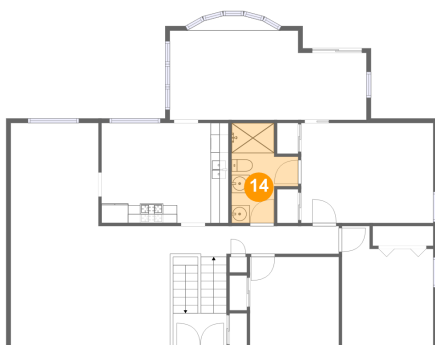
## 13 Floor 2 - Primary Bedroom



Max Dimensions: 14'8" x 11'1"  
Calculated Area: 163 sq. ft  
Included: Yes

Heated: Yes  
Finished: Yes  
Enclosed: Yes  
Contiguous: Yes  
Permitted: Yes  
Wet space: No  
Addition: No  
Conversion: No

## 14 Floor 2 - Bath



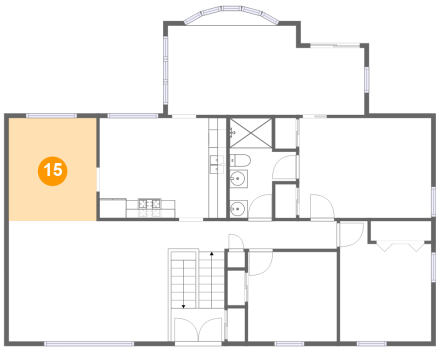
Max Dimensions: 7'5" x 11'1"  
Calculated Area: 61 sq. ft  
Included: Yes

Heated: Yes  
Finished: Yes  
Enclosed: Yes  
Contiguous: Yes  
Permitted: Yes  
Wet space: Yes  
Addition: No  
Conversion: No



1341 Kenilworth Avenue, Palatine, Cook County, Illinois, United States, 60074

15 Floor 2 - Dining Area



Max Dimensions: 9'9" x 11'5"  
Calculated Area: 111 sq. ft  
Included: Yes

Heated: Yes  
Finished: Yes  
Enclosed: Yes  
Contiguous: Yes  
Permitted: Yes  
Wet space: No  
Addition: No  
Conversion: No

16 Floor 2 - Kitchen



Max Dimensions: 14'1" x 11'1"  
Calculated Area: 156 sq. ft  
Included: Yes

Heated: Yes  
Finished: Yes  
Enclosed: Yes  
Contiguous: Yes  
Permitted: Yes  
Wet space: No  
Addition: No  
Conversion: No