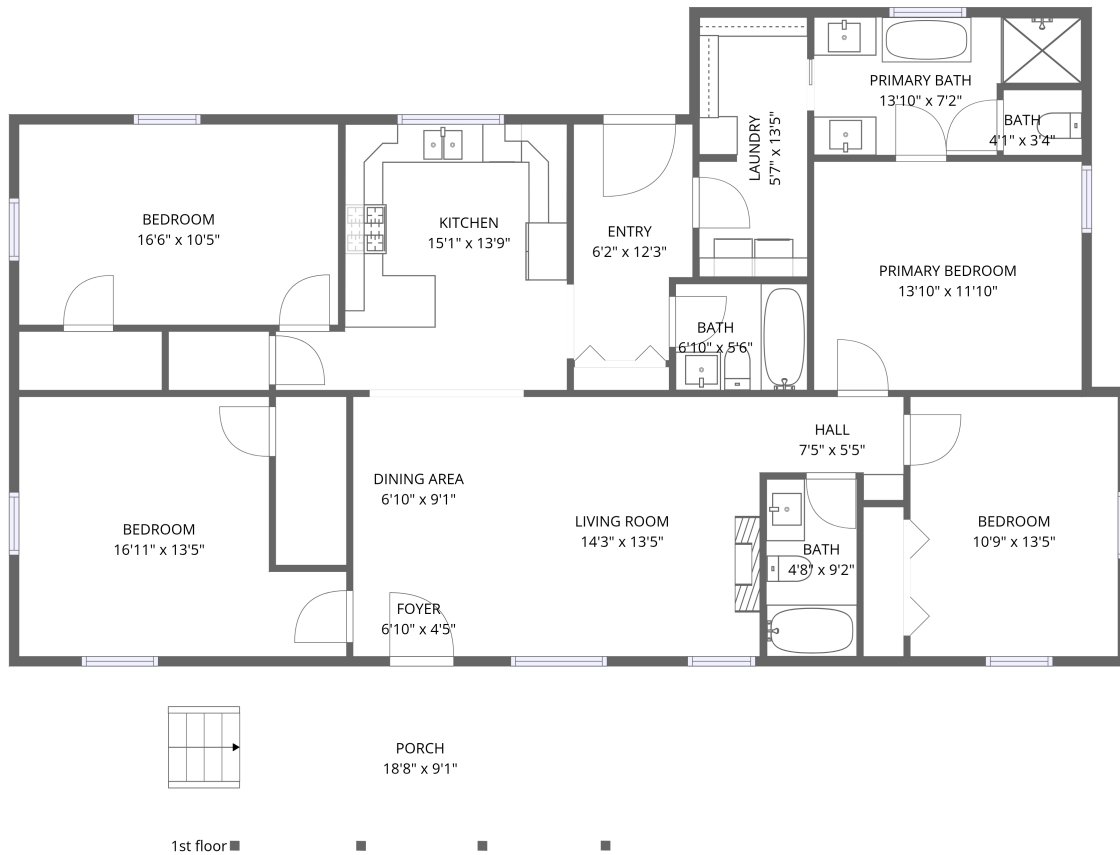


Home data report

8523 Heiskell Road, Powell, Knox County, Tennessee, United States, 37849



Total Area: 1650 sq. ft

1st Floor: 1650 sq. ft

Excluded: Porch 169 sq. ft, Walls: 91 sq. ft

Property summary

 **1** Floors

 **4** Bedrooms

 **3** Bathrooms

Home data report

8523 Heiskell Road, Powell, Knox County, Tennessee, United States, 37849



Room dimensions

Floor 1

Total:1650sqft Excluded: 169sqft

#		Dimensions	sqft	Counted as living area
1	Living Room	14'3" x 13'5"	192 sq. ft	Yes
2	Porch	18'8" x 9'1"	169 sq. ft	No
3	Bath	4'8" x 9'2"	43 sq. ft	Yes
4	Foyer	6'10" x 4'5"	30 sq. ft	Yes
5	Bath	6'10" x 5'6"	38 sq. ft	Yes
6	Bath	4'1" x 3'4"	14 sq. ft	Yes
7	Primary Bath	13'10" x 7'2"	83 sq. ft	Yes
8	Bedroom	10'9" x 13'5"	145 sq. ft	Yes
9	Bedroom	16'11" x 13'5"	192 sq. ft	Yes
10	Bedroom	16'6" x 10'5"	172 sq. ft	Yes
11	Dining Area	6'10" x 9'1"	62 sq. ft	Yes

Home data report

8523 Heiskell Road, Powell, Knox County, Tennessee, United States, 37849

#		Dimensions	sqft	Counted as living area
12	Entry	6'2" x 12'3"	70 sq. ft	Yes
13	Hall	7'5" x 5'5"	32 sq. ft	Yes
14	Kitchen	15'1" x 13'9"	169 sq. ft	Yes
15	Laundry	5'7" x 13'5"	75 sq. ft	Yes
16	Primary Bedroom	13'10" x 11'10"	164 sq. ft	Yes

8523 Heiskell Road, Powell, Knox County, Tennessee, United States, 37849

1 Floor 1 - Living Room



Dimensions: 14'3" x 13'5"
Area: 192 sq. ft
Counted as living area: Yes

Heated: Yes
Finished: Yes
Enclosed: Yes
Contiguous: Yes
Permitted: Yes
Wet space: No
Addition: No
Conversion: No

2 Floor 1 - Porch



Dimensions: 18'8" x 9'1"
Area: 169 sq. ft
Counted as living area: No

Heated: No
Finished: No
Enclosed: No
Contiguous: Yes
Permitted: Yes
Wet space: No
Addition: No
Conversion: No

3 Floor 1 - Bath



Dimensions: 4'8" x 9'2"
Area: 43 sq. ft
Counted as living area: Yes

Heated: Yes
Finished: Yes
Enclosed: Yes
Contiguous: Yes
Permitted: Yes
Wet space: Yes
Addition: No
Conversion: No

4 Floor 1 - Foyer



Dimensions: 6'10" x 4'5"
Area: 30 sq. ft
Counted as living area: Yes

Heated: Yes
Finished: Yes
Enclosed: Yes
Contiguous: Yes
Permitted: Yes
Wet space: No
Addition: No
Conversion: No

5 Floor 1 - Bath



Dimensions: 6'10" x 5'6"
Area: 38 sq. ft
Counted as living area: Yes

Heated: Yes
Finished: Yes
Enclosed: Yes
Contiguous: Yes
Permitted: Yes
Wet space: Yes
Addition: No
Conversion: No

6 Floor 1 - Bath



Dimensions: 4'1" x 3'4"
Area: 14 sq. ft
Counted as living area: Yes

Heated: Yes
Finished: Yes
Enclosed: Yes
Contiguous: Yes
Permitted: Yes
Wet space: Yes
Addition: No
Conversion: No

7 Floor 1 - Primary Bath



Dimensions: 13'10" x 7'2"
Area: 83 sq. ft
Counted as living area: Yes

Heated: Yes
Finished: Yes
Enclosed: Yes
Contiguous: Yes
Permitted: Yes
Wet space: Yes
Addition: No
Conversion: No

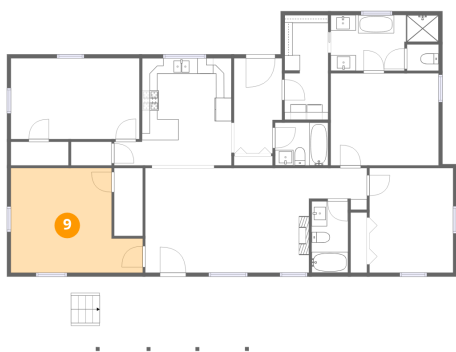
8 Floor 1 - Bedroom



Dimensions: 10'9" x 13'5"
Area: 145 sq. ft
Counted as living area: Yes

Heated: Yes
Finished: Yes
Enclosed: Yes
Contiguous: Yes
Permitted: Yes
Wet space: No
Addition: No
Conversion: No

9 Floor 1 - Bedroom



Dimensions: 16'11" x 13'5"
Area: 192 sq. ft
Counted as living area: Yes

Heated: Yes
Finished: Yes
Enclosed: Yes
Contiguous: Yes
Permitted: Yes
Wet space: No
Addition: No
Conversion: No

10 Floor 1 - Bedroom



Dimensions: 16'6" x 10'5"
Area: 172 sq. ft
Counted as living area: Yes

Heated: Yes
Finished: Yes
Enclosed: Yes
Contiguous: Yes
Permitted: Yes
Wet space: No
Addition: No
Conversion: No

11 Floor 1 - Dining Area



Dimensions: 6'10" x 9'1"
Area: 62 sq. ft
Counted as living area: Yes

Heated: Yes
Finished: Yes
Enclosed: Yes
Contiguous: Yes
Permitted: Yes
Wet space: No
Addition: No
Conversion: No

12 Floor 1 - Entry



Dimensions: 6'2" x 12'3"
Area: 70 sq. ft
Counted as living area: Yes

Heated: Yes
Finished: Yes
Enclosed: Yes
Contiguous: Yes
Permitted: Yes
Wet space: No
Addition: No
Conversion: No

13 Floor 1 - Hall



Dimensions: 7'5" x 5'5"
Area: 32 sq. ft
Counted as living area: Yes

Heated: Yes
Finished: Yes
Enclosed: Yes
Contiguous: Yes
Permitted: Yes
Wet space: No
Addition: No
Conversion: No

14 Floor 1 - Kitchen



Dimensions: 15'1" x 13'9"
Area: 169 sq. ft
Counted as living area: Yes

Heated: Yes
Finished: Yes
Enclosed: Yes
Contiguous: Yes
Permitted: Yes
Wet space: No
Addition: No
Conversion: No

15 Floor 1 - Laundry



Dimensions: 5'7" x 13'5"
Area: 75 sq. ft
Counted as living area: Yes

Heated: Yes
Finished: Yes
Enclosed: Yes
Contiguous: Yes
Permitted: Yes
Wet space: No
Addition: No
Conversion: No

16 Floor 1 - Primary Bedroom



Dimensions: 13'10" x 11'10"
Area: 164 sq. ft
Counted as living area: Yes

Heated: Yes
Finished: Yes
Enclosed: Yes
Contiguous: Yes
Permitted: Yes
Wet space: No
Addition: No
Conversion: No