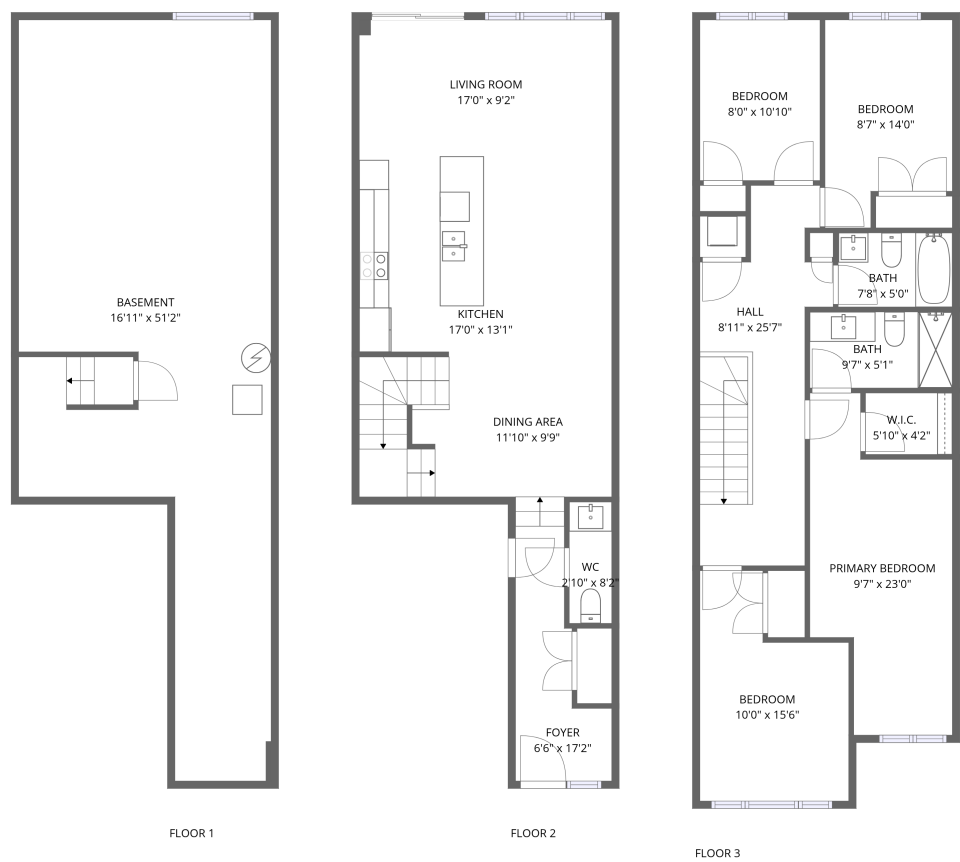


Home report

200 Hooper Street, Carleton Place, Lanark County, Ontario,  
Canada, K7C 0W2



**Total Area: 1527 sq. ft**

Below Ground: 0 sq. ft, Floor 2: 667 sq. ft, Floor 3: 860 sq. ft

Excluded: Basement 667 sq. ft, Walls: 140 sq. ft

Property summary

 **3** Floors

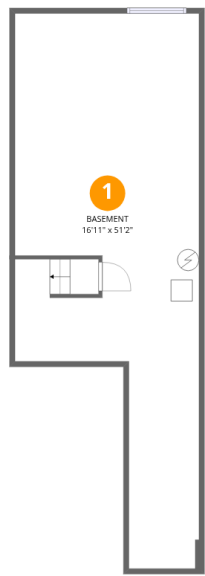
 **4** Bedrooms

 **2** Bathrooms

 **1** Half baths

Home report

200 Hooper Street, Carleton Place, Lanark County, Ontario,  
Canada, K7C 0W2



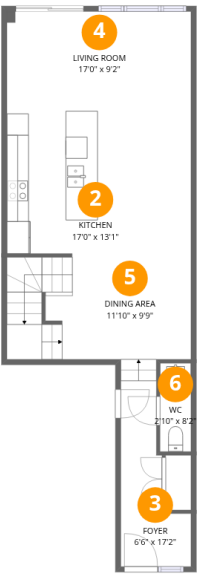
Room dimensions

Floor 1 Below ground Total:0sqft Excluded: 667sqft

#		Max Dimensions	sqft	Included
1	Basement	16'11" x 51'2"	662 sq. ft	No

Home report

200 Hooper Street, Carleton Place, Lanark County, Ontario,  
Canada, K7C 0W2



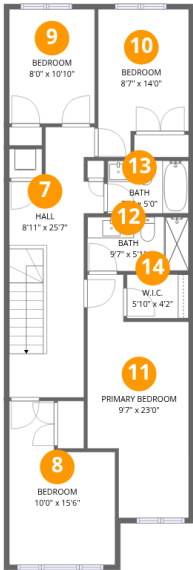
Room dimensions

Floor 2 Total:667sqft   Excluded: 0sqft

#		Max Dimensions	sqft	Included
2	Kitchen	17'0" x 13'1"	223 sq. ft	Yes
3	Foyer	6'6" x 17'2"	81 sq. ft	Yes
4	Living Room	17'0" x 9'2"	156 sq. ft	Yes
5	Dining Area	11'10" x 9'9"	163 sq. ft	Yes
6	WC	2'10" x 8'2"	23 sq. ft	Yes

Home report

200 Hooper Street, Carleton Place, Lanark County, Ontario,  
Canada, K7C 0W2



Room dimensions

Floor 3 Total:860sqft Excluded: 0sqft

#		Max Dimensions	sqft	Included
7	Hall	8'11" x 25'7"	171 sq. ft	Yes
8	Bedroom	10'0" x 15'6"	127 sq. ft	Yes
9	Bedroom	8'0" x 10'10"	87 sq. ft	Yes
10	Bedroom	8'7" x 14'0"	106 sq. ft	Yes
11	Primary Bedroom	9'7" x 23'0"	173 sq. ft	Yes
12	Bath	9'7" x 5'1"	49 sq. ft	Yes
13	Bath	7'8" x 5'0"	38 sq. ft	Yes
14	W.I.C.	5'10" x 4'2"	24 sq. ft	Yes

1 Floor 1 - Basement



Max Dimensions: 16'11" x 51'2"  
Calculated Area: 662 sq. ft  
Included: No

Heated: Yes  
Finished: No  
Enclosed: Yes  
Contiguous: Yes  
Permitted: Yes  
Wet space: No  
Addition: No  
Conversion: No

2 Floor 2 - Kitchen



Max Dimensions: 17'0" x 13'1"  
Calculated Area: 223 sq. ft  
Included: Yes

Heated: Yes  
Finished: Yes  
Enclosed: Yes  
Contiguous: Yes  
Permitted: Yes  
Wet space: No  
Addition: No  
Conversion: No

3 Floor 2 - Foyer



Max Dimensions: 6'6" x 17'2"  
Calculated Area: 81 sq. ft  
Included: Yes

Heated: Yes  
Finished: Yes  
Enclosed: Yes  
Contiguous: Yes  
Permitted: Yes  
Wet space: No  
Addition: No  
Conversion: No

4 Floor 2 - Living Room



Max Dimensions: 17'0" x 9'2"  
Calculated Area: 156 sq. ft  
Included: Yes

Heated: Yes  
Finished: Yes  
Enclosed: Yes  
Contiguous: Yes  
Permitted: Yes  
Wet space: No  
Addition: No  
Conversion: No

5 Floor 2 - Dining Area



Max Dimensions: 11'10" x 9'9"  
Calculated Area: 163 sq. ft  
Included: Yes

Heated: Yes  
Finished: Yes  
Enclosed: Yes  
Contiguous: Yes  
Permitted: Yes  
Wet space: No  
Addition: No  
Conversion: No

200 Hooper Street, Carleton Place, Lanark County, Ontario,  
Canada, K7C 0W2

6 Floor 2 - WC



Max Dimensions: 2'10" x 8'2"  
Calculated Area: 23 sq. ft  
Included: Yes

Heated: Yes  
Finished: Yes  
Enclosed: Yes  
Contiguous: Yes  
Permitted: Yes  
Wet space: Yes  
Addition: No  
Conversion: No

7 Floor 3 - Hall



Max Dimensions: 8'11" x 25'7"  
Calculated Area: 171 sq. ft  
Included: Yes

Heated: Yes  
Finished: Yes  
Enclosed: Yes  
Contiguous: Yes  
Permitted: Yes  
Wet space: No  
Addition: No  
Conversion: No

8 Floor 3 - Bedroom



Max Dimensions: 10'0" x 15'6"  
Calculated Area: 127 sq. ft  
Included: Yes

Heated: Yes  
Finished: Yes  
Enclosed: Yes  
Contiguous: Yes  
Permitted: Yes  
Wet space: No  
Addition: No  
Conversion: No

9 Floor 3 - Bedroom



Max Dimensions: 8'0" x 10'10"  
Calculated Area: 87 sq. ft  
Included: Yes

Heated: Yes  
Finished: Yes  
Enclosed: Yes  
Contiguous: Yes  
Permitted: Yes  
Wet space: No  
Addition: No  
Conversion: No

10 Floor 3 - Bedroom



Max Dimensions: 8'7" x 14'0"  
Calculated Area: 106 sq. ft  
Included: Yes

Heated: Yes  
Finished: Yes  
Enclosed: Yes  
Contiguous: Yes  
Permitted: Yes  
Wet space: No  
Addition: No  
Conversion: No

11 Floor 3 - Primary Bedroom

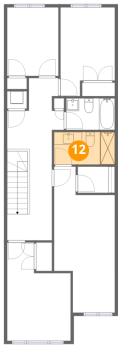


Max Dimensions: 9'7" x 23'0"  
Calculated Area: 173 sq. ft  
Included: Yes

Heated: Yes  
Finished: Yes  
Enclosed: Yes  
Contiguous: Yes  
Permitted: Yes  
Wet space: No  
Addition: No  
Conversion: No



12 Floor 3 - Bath



Max Dimensions: 9'7" x 5'1"  
Calculated Area: 49 sq. ft  
Included: Yes

Heated: Yes  
Finished: Yes  
Enclosed: Yes  
Contiguous: Yes  
Permitted: Yes  
Wet space: Yes  
Addition: No  
Conversion: No

13 Floor 3 - Bath



Max Dimensions: 7'8" x 5'0"  
Calculated Area: 38 sq. ft  
Included: Yes

Heated: Yes  
Finished: Yes  
Enclosed: Yes  
Contiguous: Yes  
Permitted: Yes  
Wet space: Yes  
Addition: No  
Conversion: No

14 Floor 3 - W.I.C.



Max Dimensions: 5'10" x 4'2"  
Calculated Area: 24 sq. ft  
Included: Yes

Heated: Yes  
Finished: Yes  
Enclosed: Yes  
Contiguous: Yes  
Permitted: Yes  
Wet space: No  
Addition: No  
Conversion: No