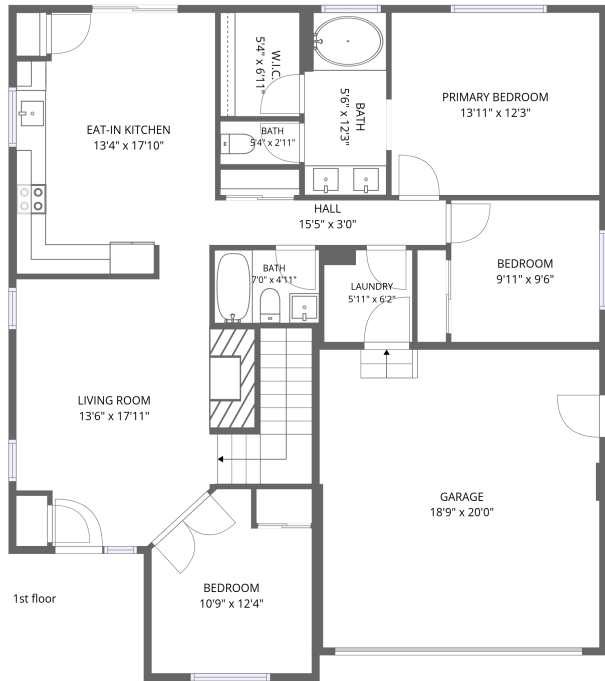
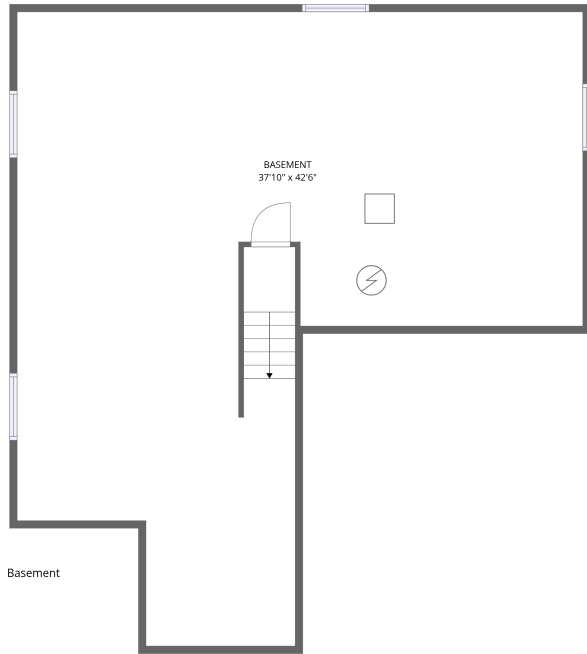


Home data report

10104 W 13th St, Greeley, CO, US

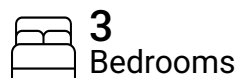


Total Area: 1225 sq. ft

Basement: 0 sq. ft, 1st Floor: 1225 sq. ft

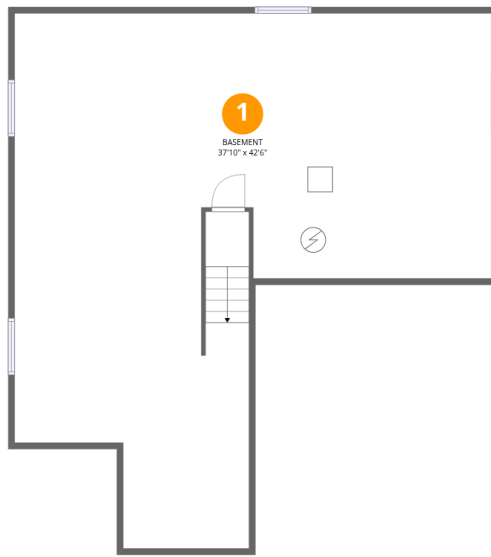
Excluded: Basement 1125 sq. ft, Garage 375 sq. ft, Walls: 184 sq. ft

Property summary



Home data report

10104 W 13th St,Greeley,CO,US



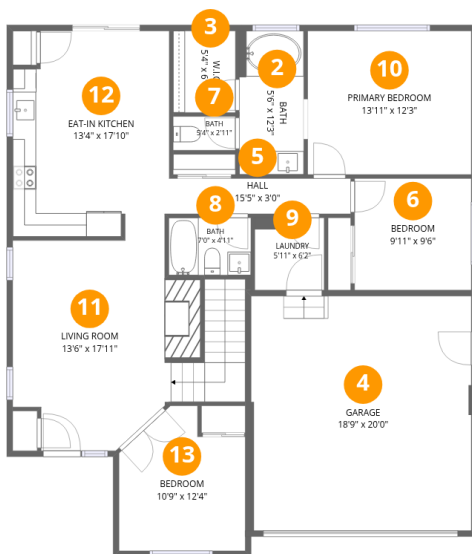
Room dimensions

Floor 1 Below grade

Total:0sqft

Excluded: 1125sqft

#		Dimensions	sqft	Counted as living area
1	Basement	37'10" x 42'6"	1118 sq. ft	No



Room dimensions

Floor 2

Total: 1225 sqft Excluded: 375 sqft

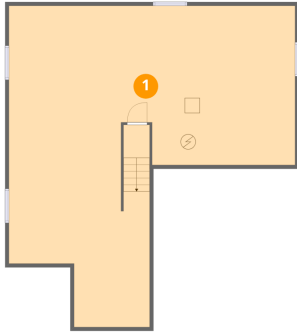
#		Dimensions	sqft	Counted as living area
2	Bath	5'6" x 12'3"	67 sq. ft	Yes
3	W.I.C.	5'4" x 6'11"	37 sq. ft	Yes
4	Garage	18'9" x 20'0"	375 sq. ft	No
5	Hall	15'5" x 3'0"	47 sq. ft	Yes
6	Bedroom	9'11" x 9'6"	94 sq. ft	Yes
7	Bath	5'4" x 2'11"	15 sq. ft	Yes
8	Bath	7'0" x 4'11"	34 sq. ft	Yes
9	Laundry	5'11" x 6'2"	36 sq. ft	Yes
10	Primary Bedroom	13'11" x 12'3"	170 sq. ft	Yes
11	Living Room	13'6" x 17'11"	284 sq. ft	Yes
12	Eat-in Kitchen	13'4" x 17'10"	226 sq. ft	Yes

Home data report

10104 W 13th St,Greeley,CO,US

#		Dimensions	sqft	Counted as living area
13	Bedroom	10'9" x 12'4"	113 sq. ft	Yes

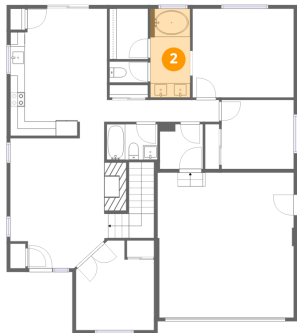
1 Floor 1 - Basement



Dimensions: 37'10" x 42'6"
Area: 1118 sq. ft
Counted as living area: No

Heated: Yes
Finished: No
Enclosed: Yes
Contiguous: Yes
Permitted: Yes
Wet space: No
Addition: No
Conversion: No

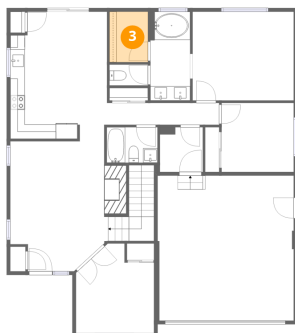
2 Floor 2 - Bath



Dimensions: 5'6" x 12'3"
Area: 67 sq. ft
Counted as living area: Yes

Heated: Yes
Finished: Yes
Enclosed: Yes
Contiguous: Yes
Permitted: Yes
Wet space: Yes
Addition: No
Conversion: No

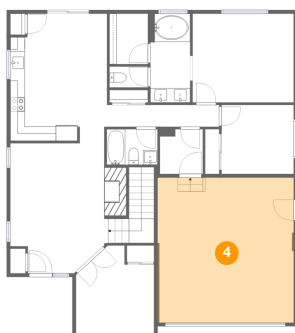
3 Floor 2 - W.I.C.



Dimensions: 5'4" x 6'11"
Area: 37 sq. ft
Counted as living area: Yes

Heated: Yes
Finished: Yes
Enclosed: Yes
Contiguous: Yes
Permitted: Yes
Wet space: No
Addition: No
Conversion: No

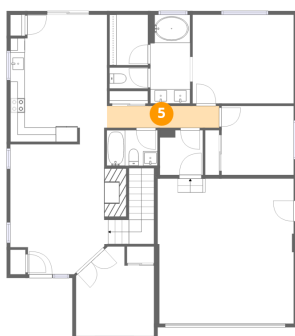
4 Floor 2 - Garage



Dimensions: 18'9" x 20'0"
Area: 375 sq. ft
Counted as living area: No

Heated: No
Finished: No
Enclosed: Yes
Contiguous: Yes
Permitted: Yes
Wet space: No
Addition: No
Conversion: No

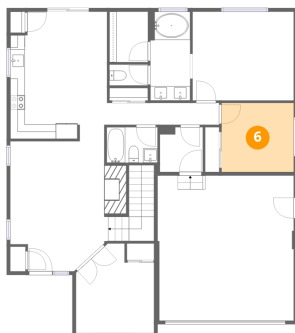
5 Floor 2 - Hall



Dimensions: 15'5" x 3'0"
Area: 47 sq. ft
Counted as living area: Yes

Heated: Yes
Finished: Yes
Enclosed: Yes
Contiguous: Yes
Permitted: Yes
Wet space: No
Addition: No
Conversion: No

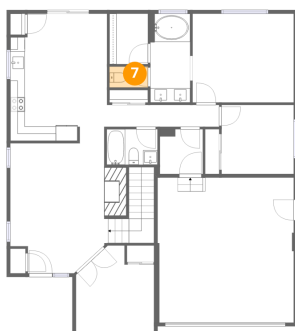
6 Floor 2 - Bedroom



Dimensions: 9'11" x 9'6"
Area: 94 sq. ft
Counted as living area: Yes

Heated: Yes
Finished: Yes
Enclosed: Yes
Contiguous: Yes
Permitted: Yes
Wet space: No
Addition: No
Conversion: No

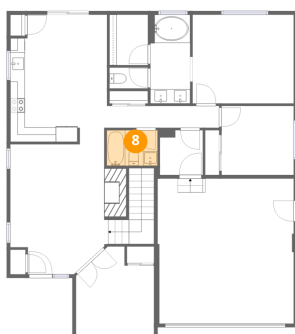
7 Floor 2 - Bath



Dimensions: 5'4" x 2'11"
Area: 15 sq. ft
Counted as living area: Yes

Heated: Yes
Finished: Yes
Enclosed: Yes
Contiguous: Yes
Permitted: Yes
Wet space: Yes
Addition: No
Conversion: No

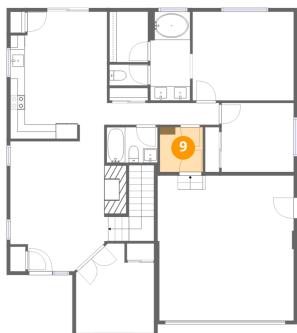
8 Floor 2 - Bath



Dimensions: 7'0" x 4'11"
Area: 34 sq. ft
Counted as living area: Yes

Heated: Yes
Finished: Yes
Enclosed: Yes
Contiguous: Yes
Permitted: Yes
Wet space: Yes
Addition: No
Conversion: No

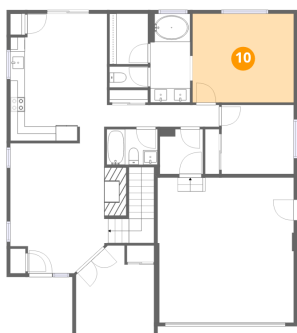
9 Floor 2 - Laundry



Dimensions: 5'11" x 6'2"
Area: 36 sq. ft
Counted as living area: Yes

Heated: Yes
Finished: Yes
Enclosed: Yes
Contiguous: Yes
Permitted: Yes
Wet space: No
Addition: No
Conversion: No

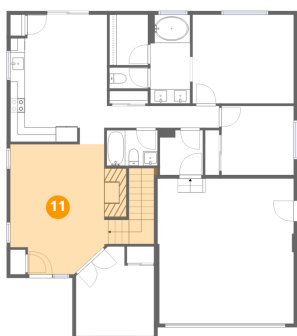
10 Floor 2 - Primary Bedroom



Dimensions: 13'11" x 12'3"
Area: 170 sq. ft
Counted as living area: Yes

Heated: Yes
Finished: Yes
Enclosed: Yes
Contiguous: Yes
Permitted: Yes
Wet space: No
Addition: No
Conversion: No

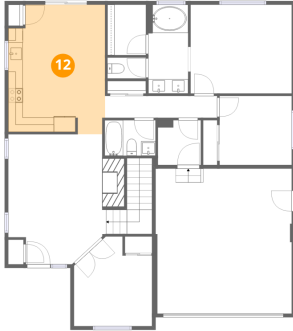
11 Floor 2 - Living Room



Dimensions: 13'6" x 17'11"
Area: 284 sq. ft
Counted as living area: Yes

Heated: Yes
Finished: Yes
Enclosed: Yes
Contiguous: Yes
Permitted: Yes
Wet space: No
Addition: No
Conversion: No

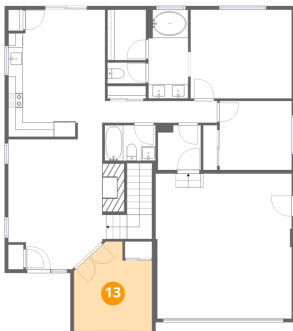
12 Floor 2 - Eat-in Kitchen



Dimensions: 13'4" x 17'10"
Area: 226 sq. ft
Counted as living area: Yes

Heated: Yes
Finished: Yes
Enclosed: Yes
Contiguous: Yes
Permitted: Yes
Wet space: No
Addition: No
Conversion: No

13 Floor 2 - Bedroom



Dimensions: 10'9" x 12'4"
Area: 113 sq. ft
Counted as living area: Yes

Heated: Yes
Finished: Yes
Enclosed: Yes
Contiguous: Yes
Permitted: Yes
Wet space: No
Addition: No
Conversion: No