



## Total Area: 1915 sq. ft

Basement: 581 sq. ft, 1st Floor: 1334 sq. ft

Excluded: Garage 494 sq. ft, Utility 44 sq. ft, Storage 56 sq. ft, Fireplace 32 sq. ft, Porch 64 sq. ft, Patio 481 sq. ft, Walls: 170 sq. ft


## Property summary



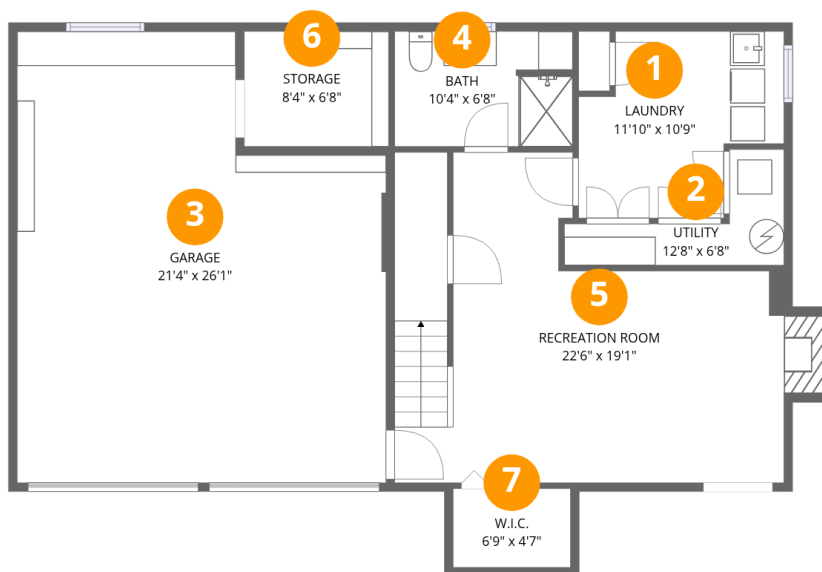
Home data report

345 Maize Dr,Pittsburgh,PA,US



 **1**  
Half baths

 **1**  
Garages



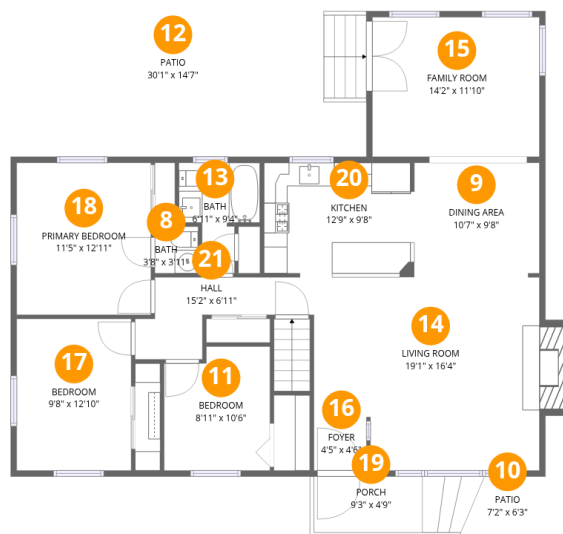
## Room dimensions

Floor 1 Below grade

Total:581sqft

Excluded: 607sqft

#		Dimensions	sqft	Counted as living area
1	Laundry	11'10" x 10'9"	105 sq. ft	Yes
2	Utility	12'8" x 6'8"	44 sq. ft	No
3	Garage	21'4" x 26'1"	494 sq. ft	No
4	Bath	10'4" x 6'8"	67 sq. ft	Yes
5	Recreation Room	22'6" x 19'1"	320 sq. ft	Yes
6	Storage	8'4" x 6'8"	56 sq. ft	No
7	W.I.C.	6'9" x 4'7"	31 sq. ft	Yes



## Room dimensions

Floor 2

Total:1334sqft Excluded: 564sqft

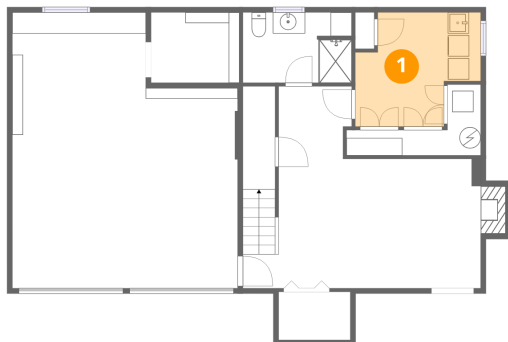
#		Dimensions	sqft	Counted as living area
8	Bath	3'8" x 3'11"	15 sq. ft	Yes
9	Dining Area	10'7" x 9'8"	103 sq. ft	Yes
10	Patio	7'2" x 6'3"	40 sq. ft	No
11	Bedroom	8'11" x 10'6"	89 sq. ft	Yes
12	Patio	30'1" x 14'7"	441 sq. ft	No
13	Bath	6'11" x 9'4"	47 sq. ft	Yes
14	Living Room	19'1" x 16'4"	308 sq. ft	Yes
15	Family Room	14'2" x 11'10"	168 sq. ft	Yes
16	Foyer	4'5" x 4'6"	20 sq. ft	Yes
17	Bedroom	9'8" x 12'10"	125 sq. ft	Yes
18	Primary Bedroom	11'5" x 12'11"	147 sq. ft	Yes



#		Dimensions	sqft	Counted as living area
19	Porch	9'3" x 4'9"	64 sq. ft	No
20	Kitchen	12'9" x 9'8"	122 sq. ft	Yes
21	Hall	15'2" x 6'11"	64 sq. ft	Yes



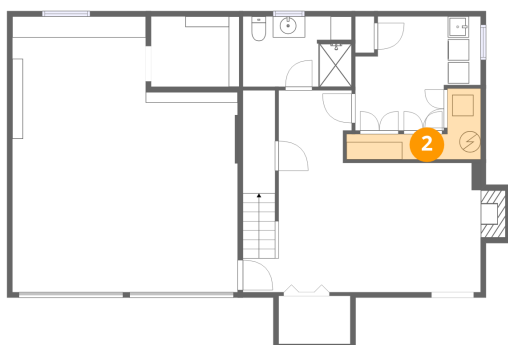
## 1 Floor 1 - Laundry



Dimensions: 11'10" x 10'9"  
Area: 105 sq. ft  
Counted as living area: Yes

Heated: Yes  
Finished: Yes  
Enclosed: Yes  
Contiguous: Yes  
Permitted: Yes  
Wet space: No  
Addition: No  
Conversion: No

## 2 Floor 1 - Utility

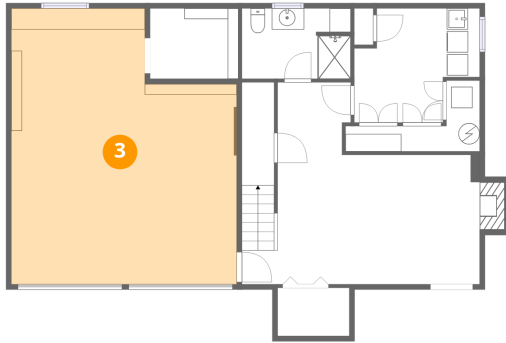


Dimensions: 12'8" x 6'8"  
Area: 44 sq. ft  
Counted as living area: No

Heated: Yes  
Finished: No  
Enclosed: Yes  
Contiguous: Yes  
Permitted: Yes  
Wet space: No  
Addition: No  
Conversion: No



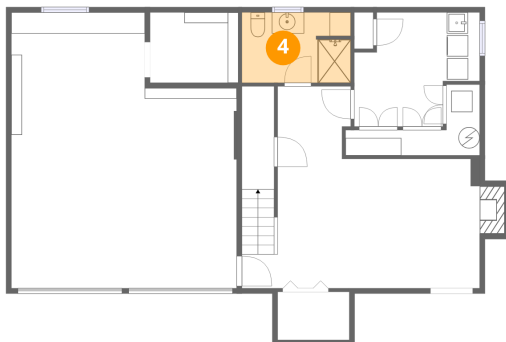
### 3 Floor 1 - Garage



Dimensions: 21'4" x 26'1"  
Area: 494 sq. ft  
Counted as living area: No

Heated: No  
Finished: No  
Enclosed: Yes  
Contiguous: Yes  
Permitted: Yes  
Wet space: No  
Addition: No  
Conversion: No

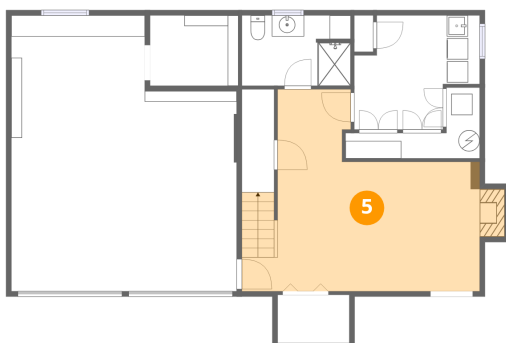
### 4 Floor 1 - Bath



Dimensions: 10'4" x 6'8"  
Area: 67 sq. ft  
Counted as living area: Yes

Heated: Yes  
Finished: Yes  
Enclosed: Yes  
Contiguous: Yes  
Permitted: Yes  
Wet space: Yes  
Addition: No  
Conversion: No

### 5 Floor 1 - Recreation Room

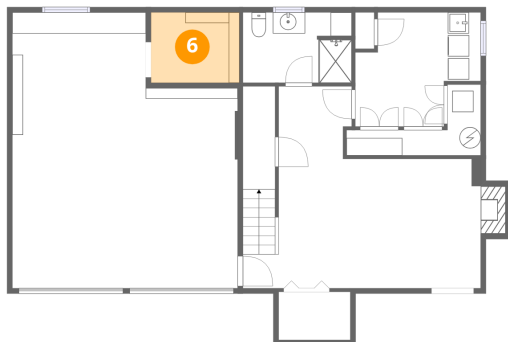


Dimensions: 22'6" x 19'1"  
Area: 320 sq. ft  
Counted as living area: Yes

Heated: Yes  
Finished: Yes  
Enclosed: Yes  
Contiguous: Yes  
Permitted: Yes  
Wet space: No  
Addition: No  
Conversion: No



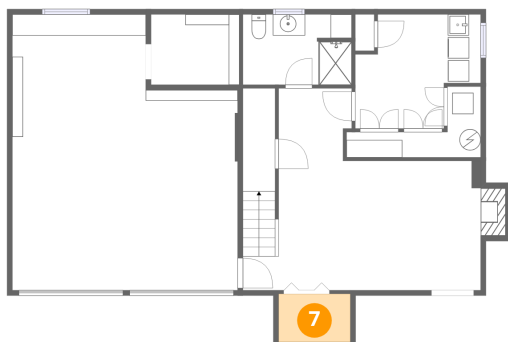
### 6 Floor 1 - Storage



Dimensions: 8'4" x 6'8"  
Area: 56 sq. ft  
Counted as living area: No

Heated: No  
Finished: No  
Enclosed: No  
Contiguous: Yes  
Permitted: Yes  
Wet space: No  
Addition: No  
Conversion: No

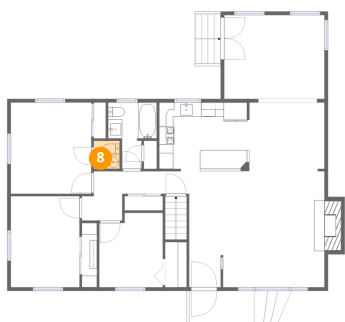
### 7 Floor 1 - W.I.C.



Dimensions: 6'9" x 4'7"  
Area: 31 sq. ft  
Counted as living area: Yes

Heated: Yes  
Finished: Yes  
Enclosed: Yes  
Contiguous: Yes  
Permitted: Yes  
Wet space: No  
Addition: No  
Conversion: No

### 8 Floor 2 - Bath

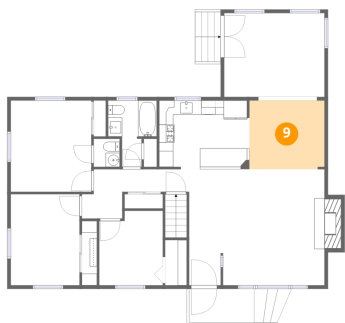


Dimensions: 3'8" x 3'11"  
Area: 15 sq. ft  
Counted as living area: Yes

Heated: Yes  
Finished: Yes  
Enclosed: Yes  
Contiguous: Yes  
Permitted: Yes  
Wet space: Yes  
Addition: No  
Conversion: No



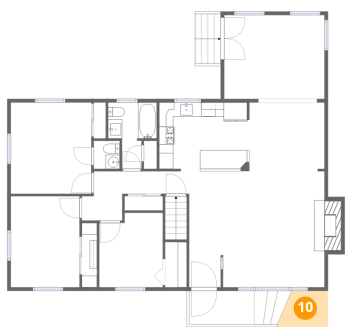
## 9 Floor 2 - Dining Area



Dimensions: 10'7" x 9'8"  
Area: 103 sq. ft  
Counted as living area: Yes

Heated: Yes  
Finished: Yes  
Enclosed: Yes  
Contiguous: Yes  
Permitted: Yes  
Wet space: No  
Addition: No  
Conversion: No

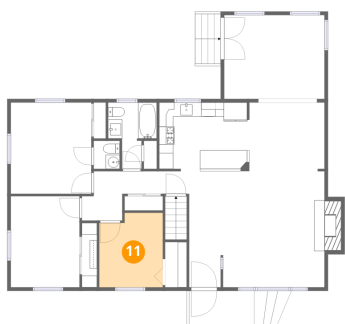
## 10 Floor 2 - Patio



Dimensions: 7'2" x 6'3"  
Area: 40 sq. ft  
Counted as living area: No

Heated: No  
Finished: No  
Enclosed: No  
Contiguous: Yes  
Permitted: Yes  
Wet space: No  
Addition: No  
Conversion: No

## 11 Floor 2 - Bedroom

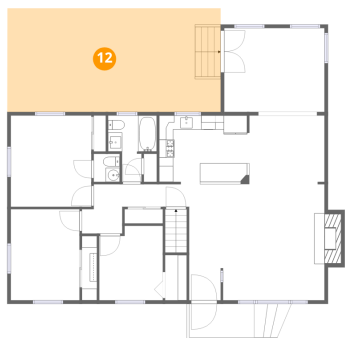


Dimensions: 8'11" x 10'6"  
Area: 89 sq. ft  
Counted as living area: Yes

Heated: Yes  
Finished: Yes  
Enclosed: Yes  
Contiguous: Yes  
Permitted: Yes  
Wet space: No  
Addition: No  
Conversion: No



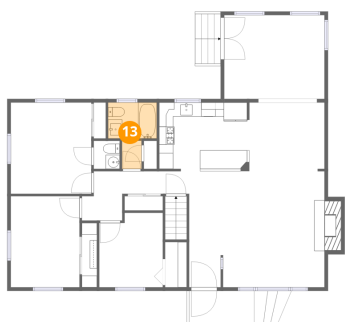
## 12 Floor 2 - Patio



Dimensions: 30'1" x 14'7"  
Area: 441 sq. ft  
Counted as living area: No

Heated: No  
Finished: No  
Enclosed: No  
Contiguous: Yes  
Permitted: Yes  
Wet space: No  
Addition: No  
Conversion: No

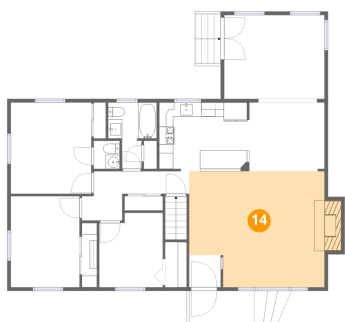
## 13 Floor 2 - Bath



Dimensions: 6'11" x 9'4"  
Area: 47 sq. ft  
Counted as living area: Yes

Heated: Yes  
Finished: Yes  
Enclosed: Yes  
Contiguous: Yes  
Permitted: Yes  
Wet space: Yes  
Addition: No  
Conversion: No

## 14 Floor 2 - Living Room

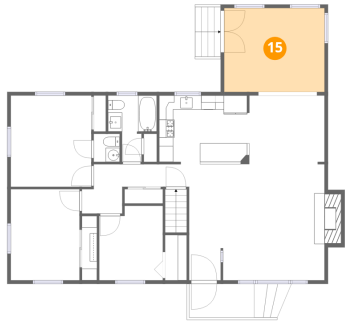


Dimensions: 19'1" x 16'4"  
Area: 308 sq. ft  
Counted as living area: Yes

Heated: Yes  
Finished: Yes  
Enclosed: Yes  
Contiguous: Yes  
Permitted: Yes  
Wet space: No  
Addition: No  
Conversion: No



## 15 Floor 2 - Family Room



Dimensions: 14'2" x 11'10"  
Area: 168 sq. ft  
Counted as living area: Yes

Heated: Yes  
Finished: Yes  
Enclosed: Yes  
Contiguous: Yes  
Permitted: Yes  
Wet space: No  
Addition: No  
Conversion: No

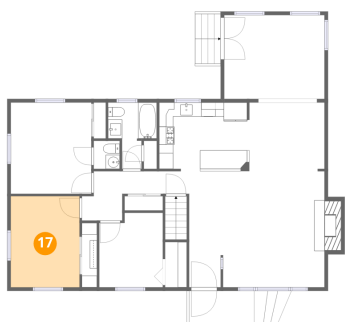
## 16 Floor 2 - Foyer



Dimensions: 4'5" x 4'6"  
Area: 20 sq. ft  
Counted as living area: Yes

Heated: Yes  
Finished: Yes  
Enclosed: Yes  
Contiguous: Yes  
Permitted: Yes  
Wet space: No  
Addition: No  
Conversion: No

## 17 Floor 2 - Bedroom



Dimensions: 9'8" x 12'10"  
Area: 125 sq. ft  
Counted as living area: Yes

Heated: Yes  
Finished: Yes  
Enclosed: Yes  
Contiguous: Yes  
Permitted: Yes  
Wet space: No  
Addition: No  
Conversion: No



## 18 Floor 2 - Primary Bedroom



Dimensions: 11'5" x 12'11"  
Area: 147 sq. ft  
Counted as living area: Yes

Heated: Yes  
Finished: Yes  
Enclosed: Yes  
Contiguous: Yes  
Permitted: Yes  
Wet space: No  
Addition: No  
Conversion: No

## 19 Floor 2 - Porch



Dimensions: 9'3" x 4'9"  
Area: 64 sq. ft  
Counted as living area: No

Heated: No  
Finished: No  
Enclosed: No  
Contiguous: Yes  
Permitted: Yes  
Wet space: No  
Addition: No  
Conversion: No

## 20 Floor 2 - Kitchen

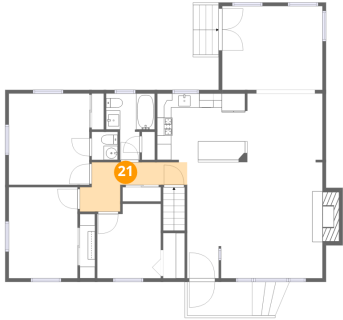


Dimensions: 12'9" x 9'8"  
Area: 122 sq. ft  
Counted as living area: Yes

Heated: Yes  
Finished: Yes  
Enclosed: Yes  
Contiguous: Yes  
Permitted: Yes  
Wet space: No  
Addition: No  
Conversion: No



## 21 Floor 2 - Hall



Dimensions: 15'2" x 6'11"  
Area: 64 sq. ft  
Counted as living area: Yes

Heated: Yes  
Finished: Yes  
Enclosed: Yes  
Contiguous: Yes  
Permitted: Yes  
Wet space: No  
Addition: No  
Conversion: No