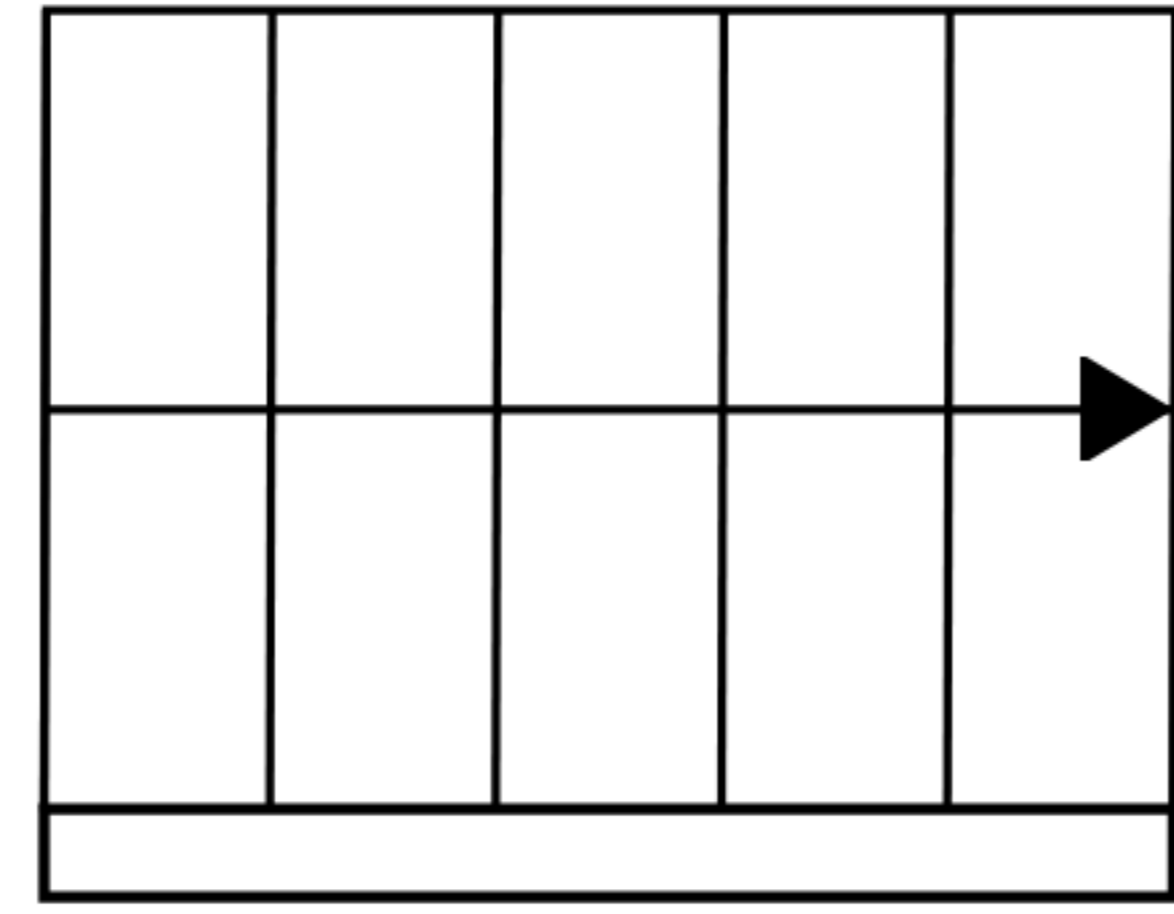
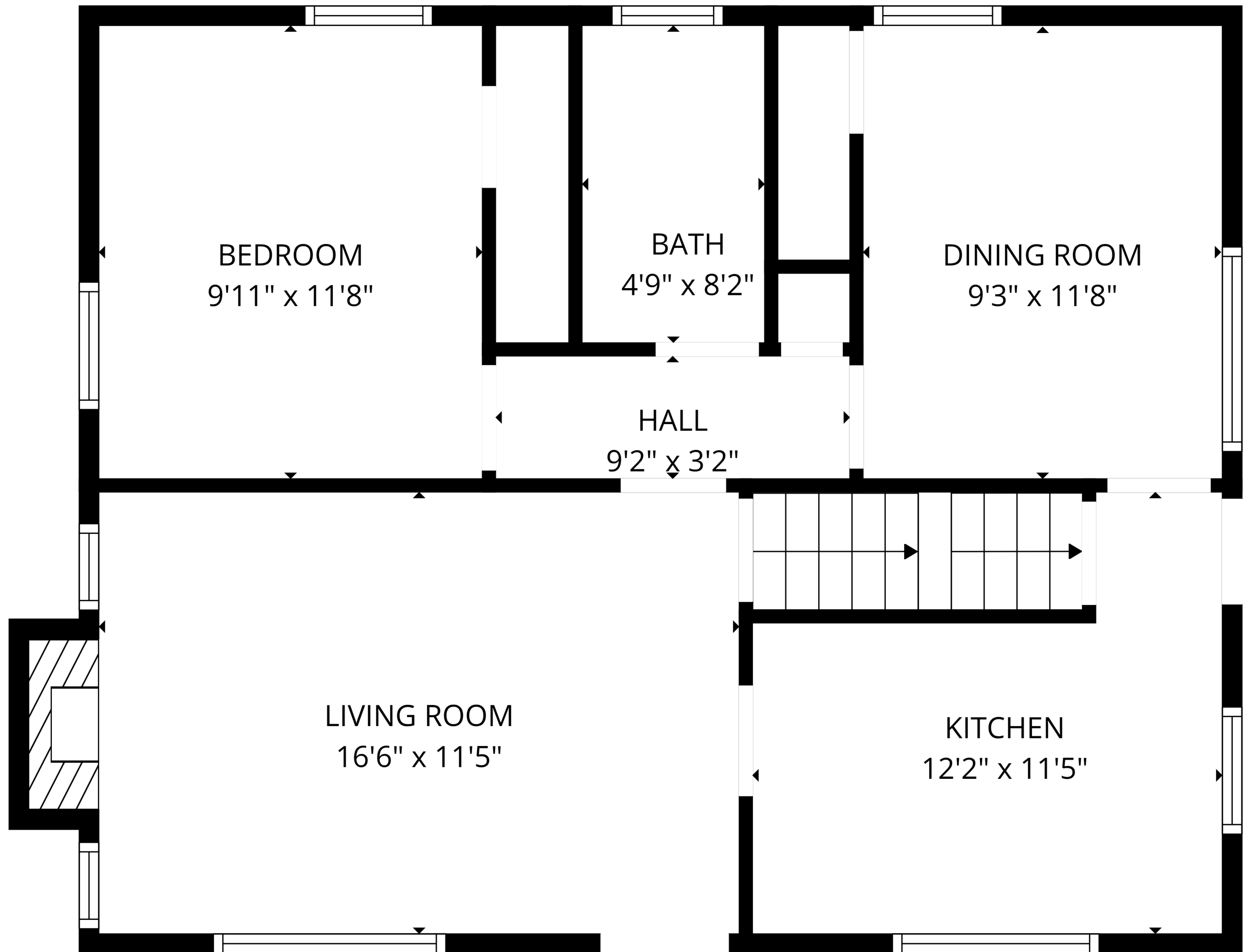


BASEMENT  
29'0" x 23'5"



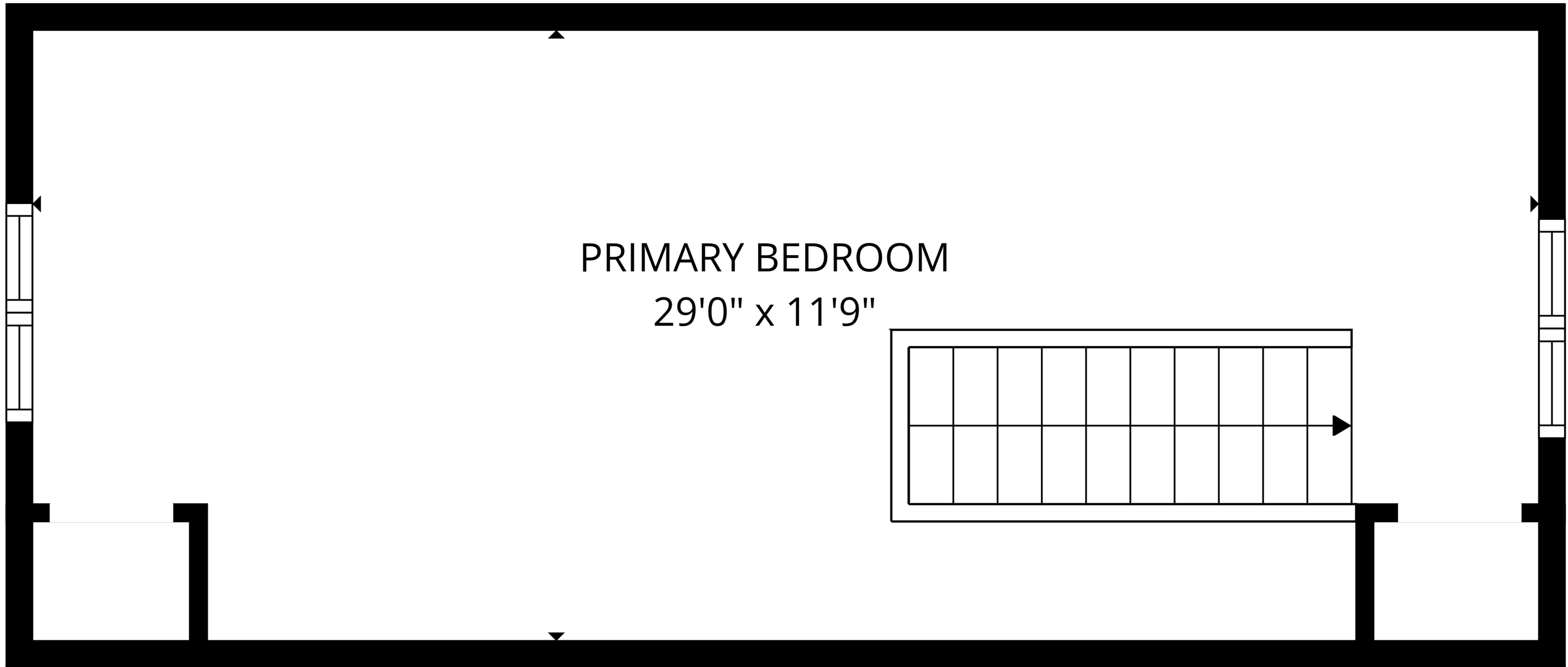
**TOTAL: 977 sq. ft**  
Basement 1: 0 sq. ft, 1st floor: 682 sq. ft, 2nd floor: 295 sq. ft  
EXCLUDED AREAS: BASEMENT: 680 sq. ft, FIREPLACE: 10 sq. ft, LOW CEILING: 45 sq. ft,  
WALLS: 148 sq. ft



**TOTAL: 977 sq. ft**

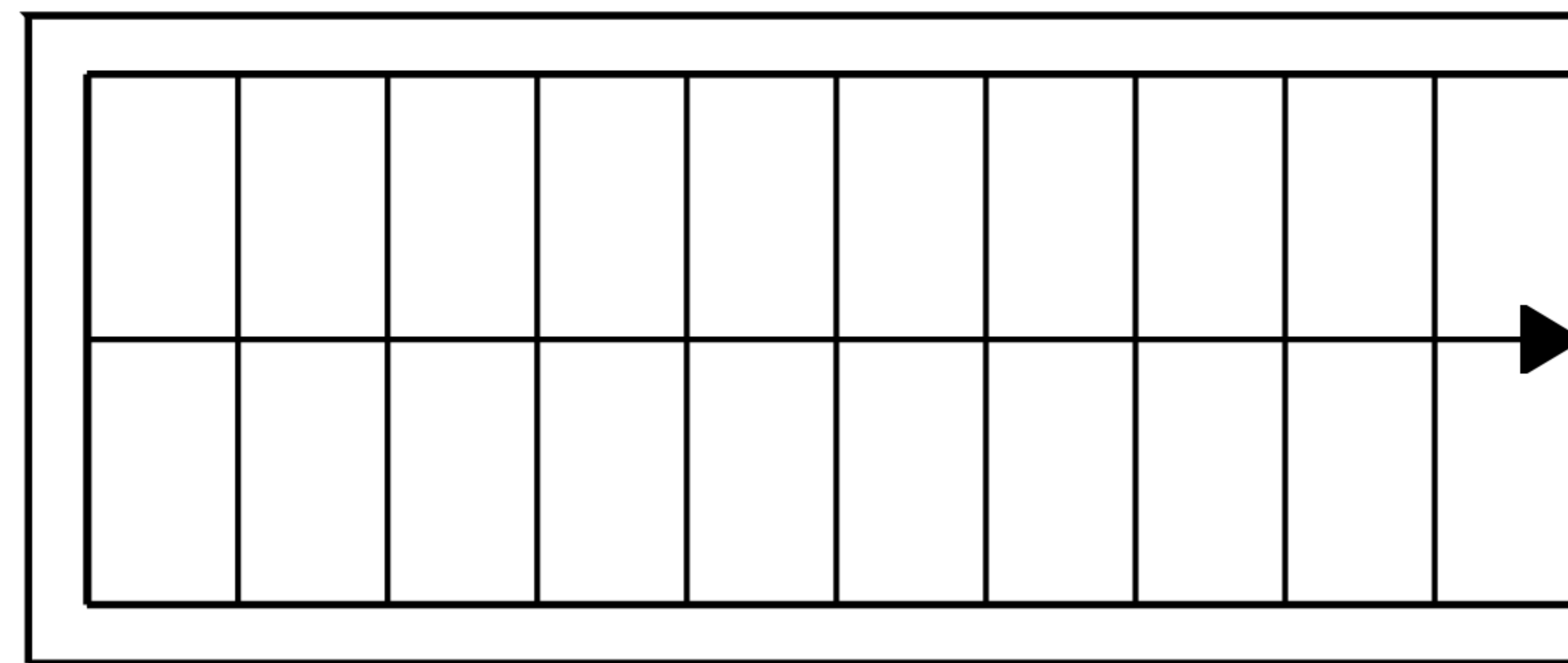
Basement 1: 0 sq. ft, 1st floor: 682 sq. ft, 2nd floor: 295 sq. ft

EXCLUDED AREAS: BASEMENT: 680 sq. ft, FIREPLACE: 10 sq. ft, LOW CEILING: 45 sq. ft,  
WALLS: 148 sq. ft



PRIMARY BEDROOM

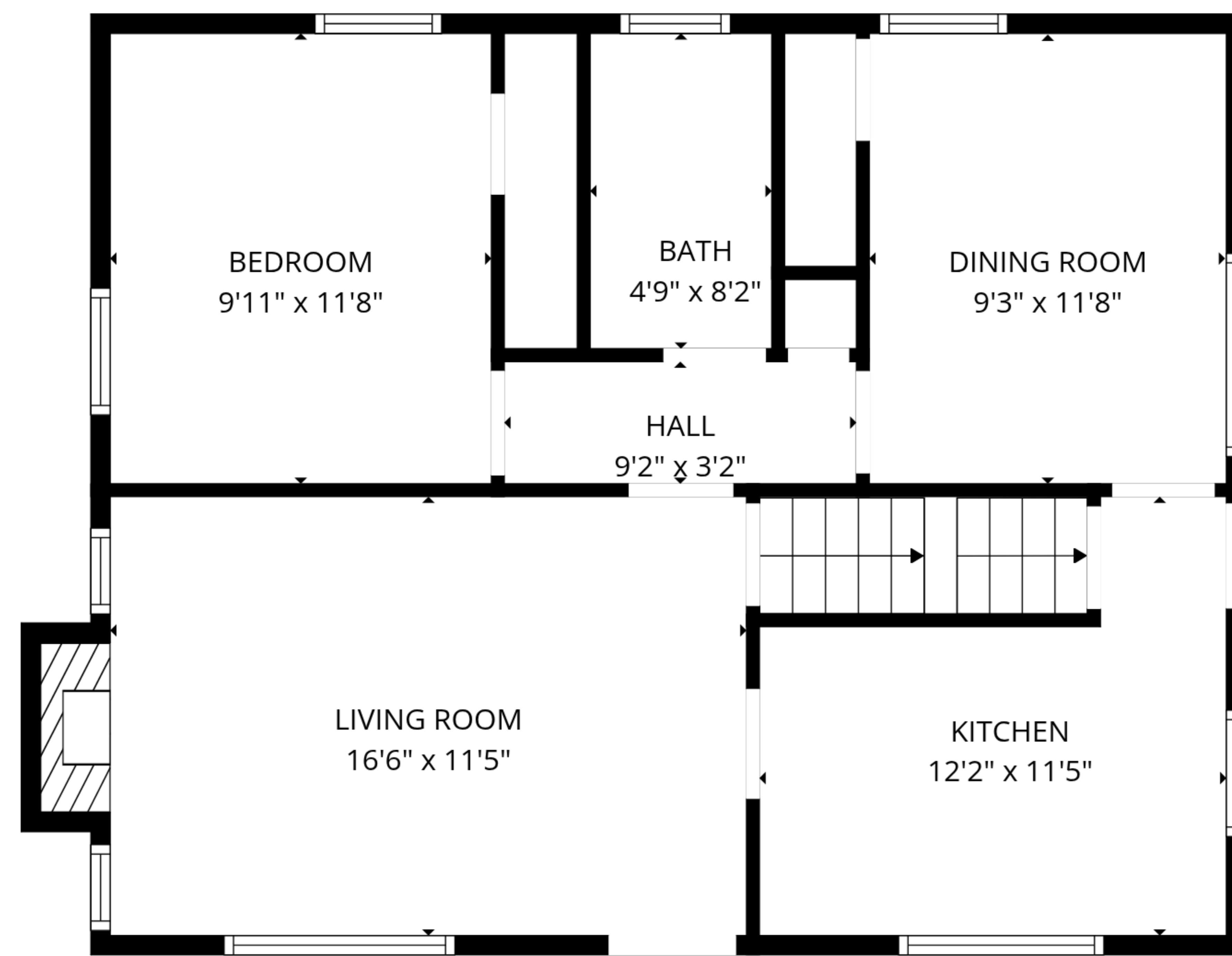
29'0" x 11'9"



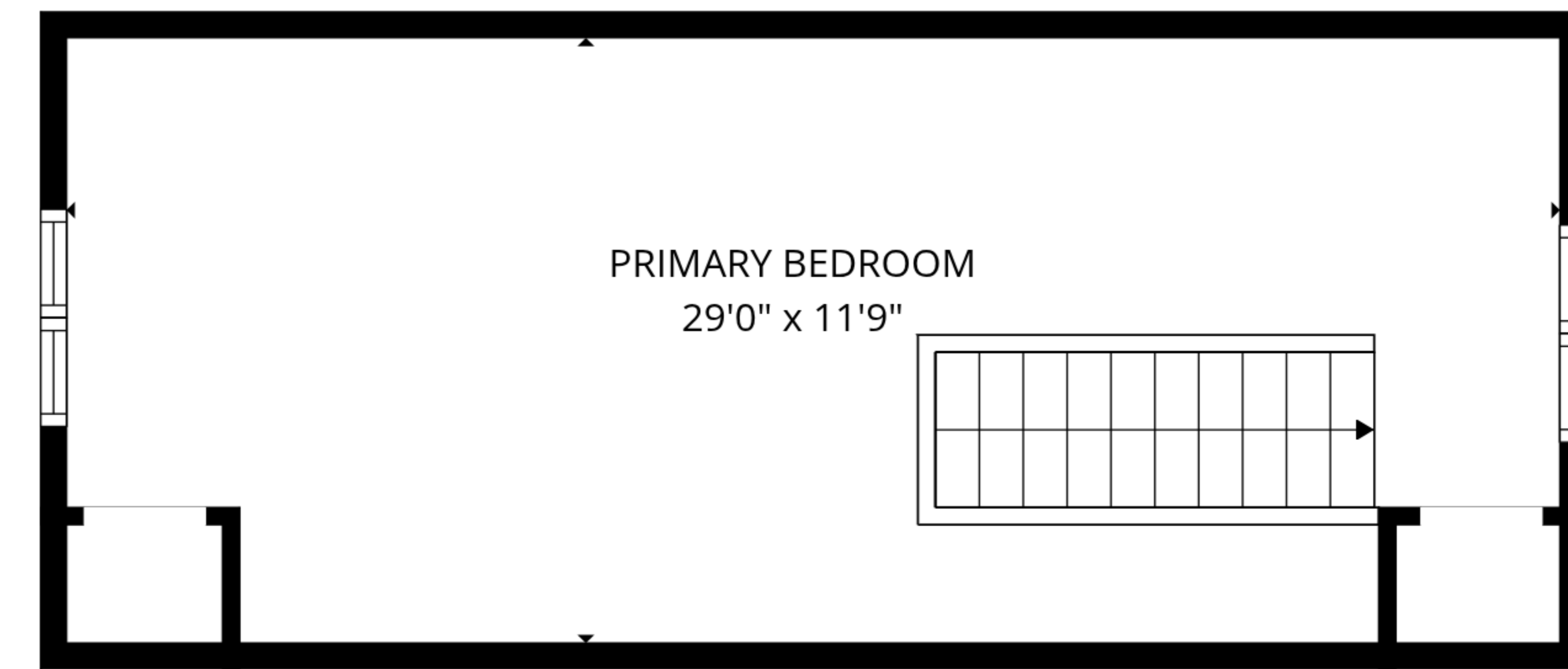
**TOTAL: 977 sq. ft**

Basement 1: 0 sq. ft, 1st floor: 682 sq. ft, 2nd floor: 295 sq. ft

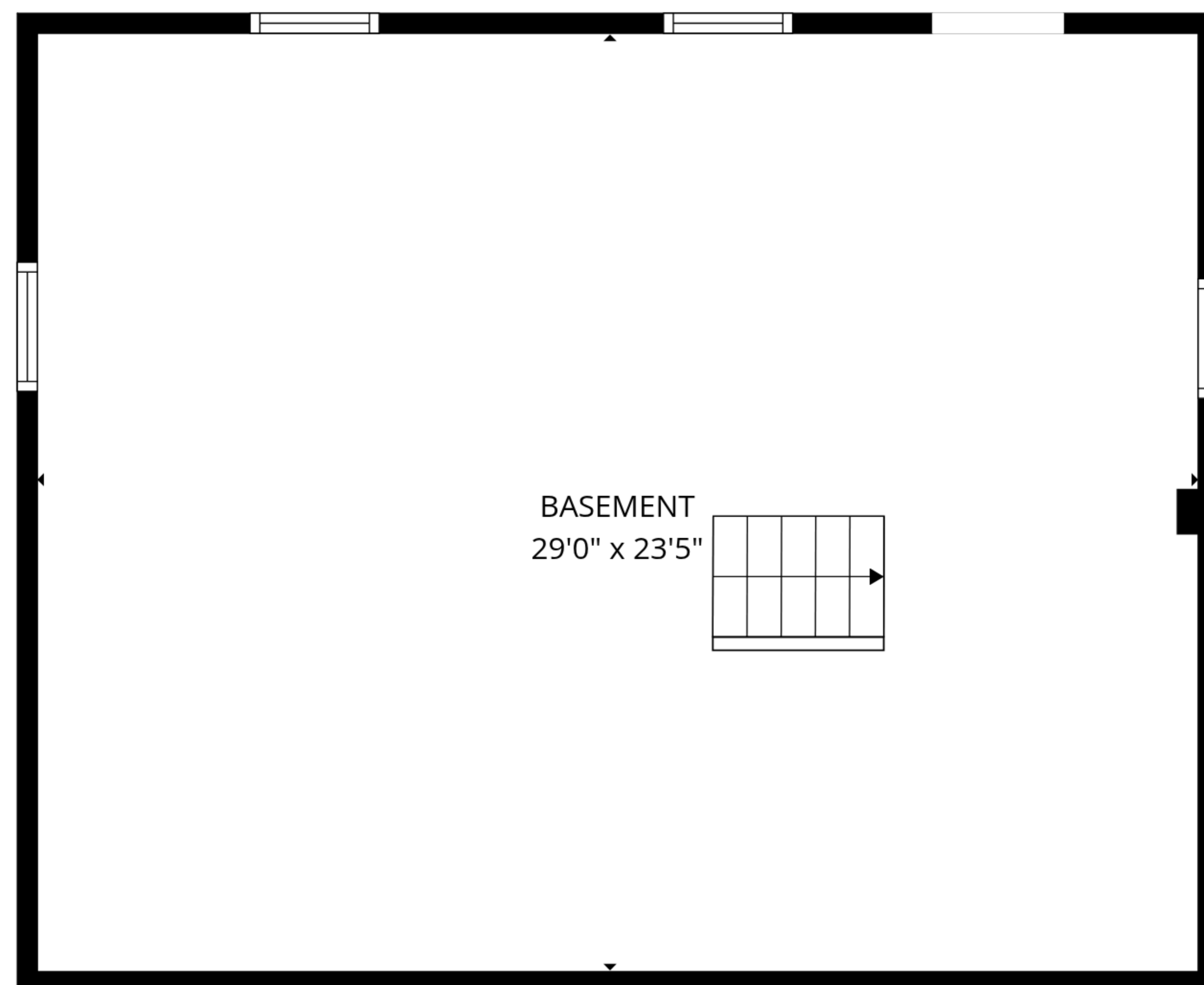
EXCLUDED AREAS: BASEMENT: 680 sq. ft, FIREPLACE: 10 sq. ft, LOW CEILING: 45 sq. ft,  
WALLS: 148 sq. ft



1st floor



2nd floor



Basement 1

**TOTAL: 977 sq. ft**  
 Basement 1: 0 sq. ft, 1st floor: 682 sq. ft, 2nd floor: 295 sq. ft  
 EXCLUDED AREAS: BASEMENT: 680 sq. ft, FIREPLACE: 10 sq. ft, LOW CEILING: 45 sq. ft,  
 WALLS: 148 sq. ft