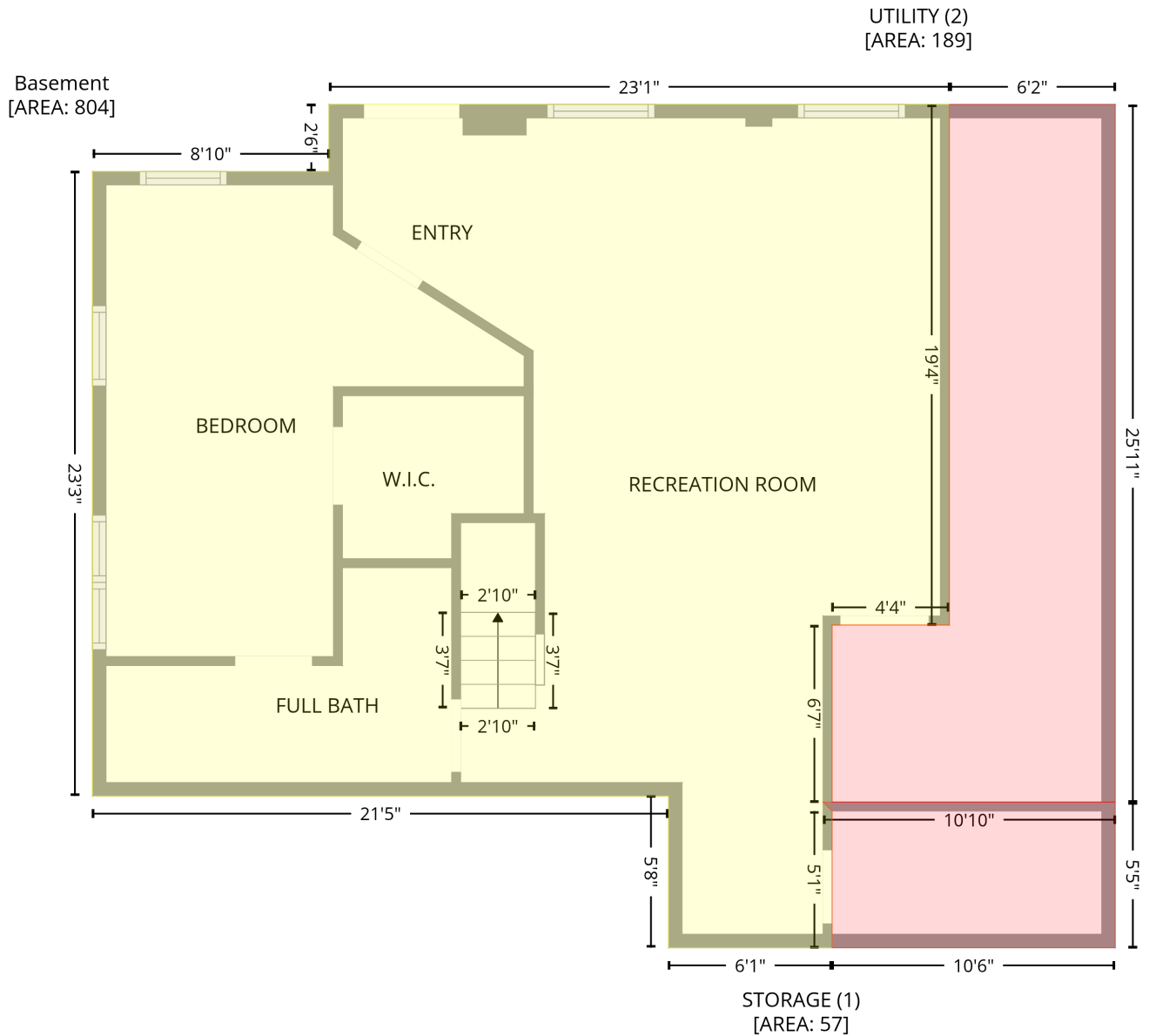


# 431 9th St NW, Hickory, NC, US

Gross Living Area: 2037 sq. ft

## Level 1 - Below Grade



Space	Area (sq. ft)	Calculation <small>Coordinate Polygon Area Algorithm using inches</small>
Basement (Living area)	804	$-\left((485 + 485) * (44.8 - 277.2) + (485 + 432.7) * (277.2 - 277.2) + (432.7 + 432.7) * (277.2 - 356.2) + (432.7 + 428.7) * (356.2 - 356.2) + (428.7 + 432.7) * (356.2 - 360.2) + (432.7 + 432.7) * (360.2 - 421.3) + (432.7 + 359.7) * (421.3 - 421.3) + (359.7 + 359.7) * (421.3 - 353.5) + (359.7 + 102.7) * (353.5 - 353.5) + (102.7 + 102.7) * (353.5 - 74.7) + (102.7 + 208.2) * (74.7 - 74.7) + (208.2 + 208.2) * (74.7 - 44.8) + (208.2 + 485) * (44.8 - 44.8)\right) * 0.5 * 0.00694$
STORAGE (Non-living area)	57	$-\left((559.1 + 559.1) * (356.2 - 421.3) + (559.1 + 432.7) * (421.3 - 421.3) + (432.7 + 432.7) * (421.3 - 360.2) + (432.7 + 428.7) * (360.2 - 356.2) + (428.7 + 559.1) * (356.2 - 356.2)\right) * 0.5 * 0.00694$

# 431 9th St NW,Hickory,NC,US

Gross Living Area: 2037 sq. ft

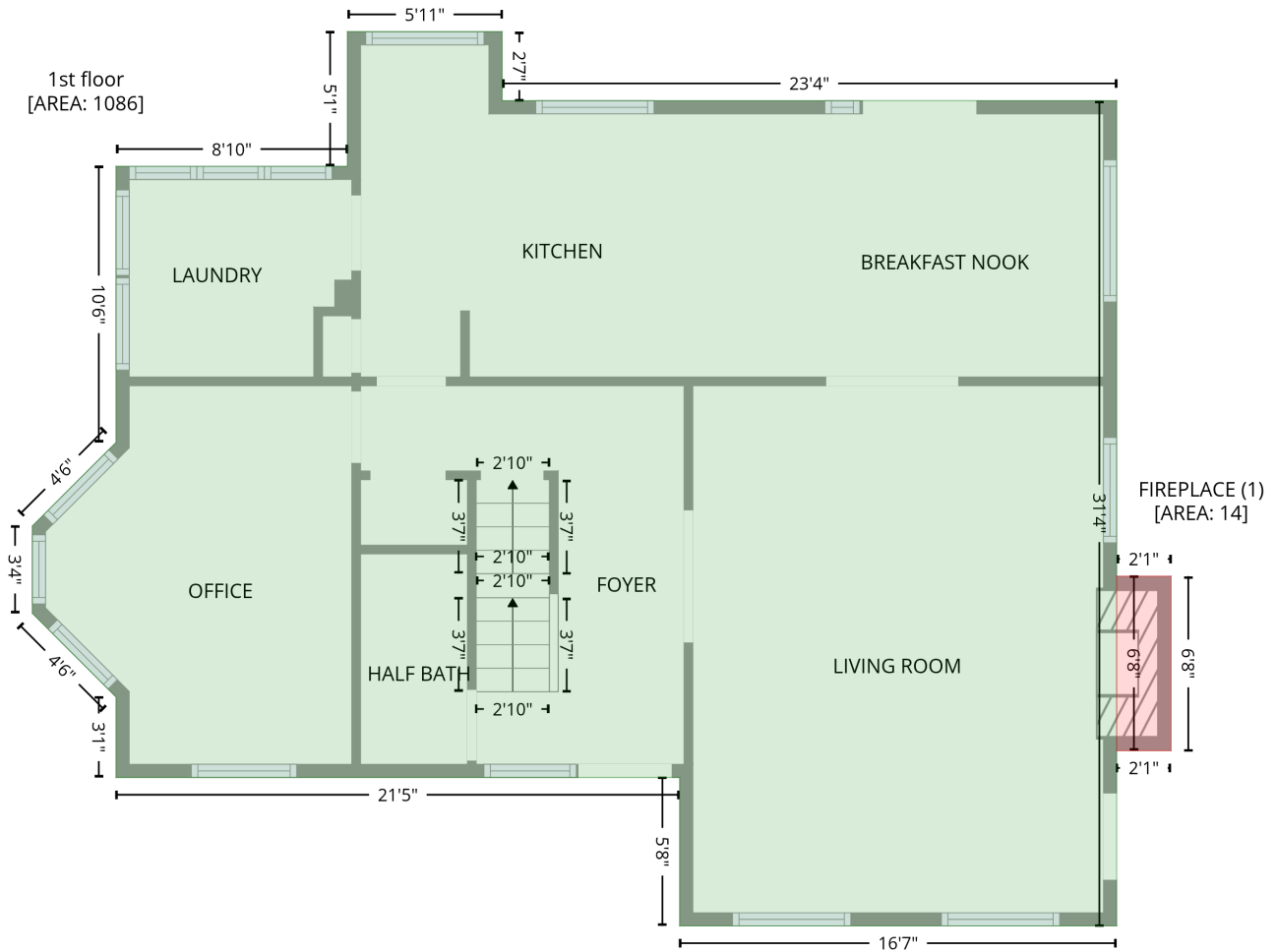
## Level 1 - Below Grade

Space	Area (sq. ft)	Calculation <small>Coordinate Polygon Area Algorithm using inches</small>
UTILITY (Non-living area)	189	$-\left(\frac{(559.1 + 559.1) * (44.8 - 356.2) + (559.1 + 432.7) * (356.2 - 356.2) + (432.7 + 432.7) * (356.2 - 277.2) + (432.7 + 485) * (277.2 - 277.2) + (485 + 485) * (277.2 - 44.8) + (485 + 559.1) * (44.8 - 44.8)}{2}\right) * 0.5 * 0.00694$

# 431 9th St NW, Hickory, NC, US

Gross Living Area: 2037 sq. ft

## Level 2

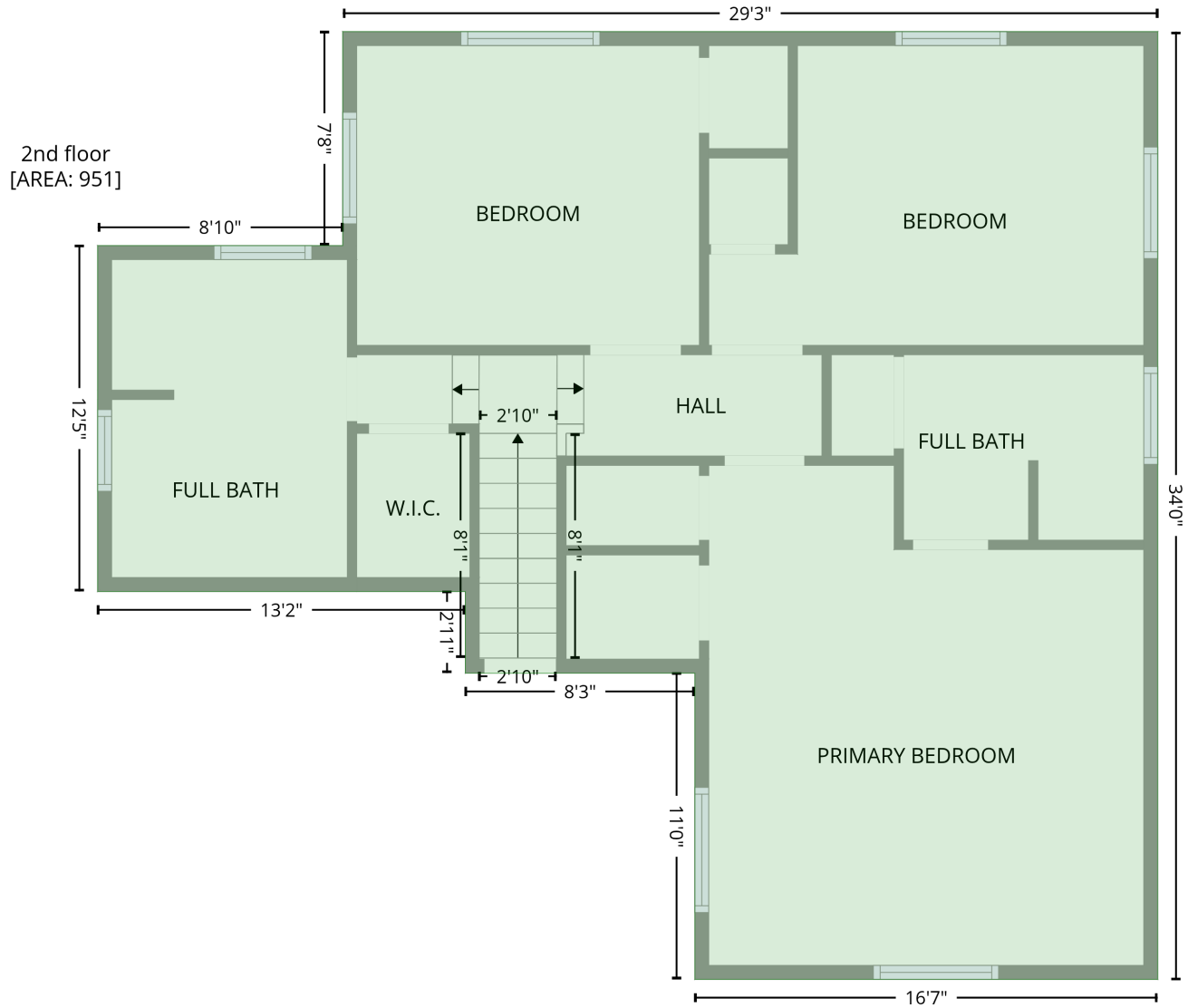


Space	Area (sq. ft)	Calculation <small>Coordinate Polygon Area Algorithm using inches</small>
1st floor (Living area)	1086	$-\left((278.7 + 278.7) * (13.3 - 44.8) + (278.7 + 559.1) * (44.8 - 44.8) + (559.1 + 559.1) * (44.8 - 421.3) + (559.1 + 359.7) * (421.3 - 421.3) + (359.7 + 359.7) * (421.3 - 353.5) + (359.7 + 102.7) * (353.5 - 353.5) + (102.7 + 102.7) * (353.5 - 316.8) + (102.7 + 64.5) * (316.8 - 278.6) + (64.5 + 64.5) * (278.6 - 238.9) + (64.5 + 102.7) * (238.9 - 200.7) + (102.7 + 102.7) * (200.7 - 74.7) + (102.7 + 208.2) * (74.7 - 74.7) + (208.2 + 208.2) * (74.7 - 13.3) + (208.2 + 278.7) * (13.3 - 13.3)\right) * 0.5 * 0.00694$
FIREPLACE (Non-living area)	14	$-\left((583.9 + 583.9) * (261.7 - 341.3) + (583.9 + 559.1) * (341.3 - 341.3) + (559.1 + 559.1) * (341.3 - 261.7) + (559.1 + 583.9) * (261.7 - 261.7)\right) * 0.5 * 0.00694$

# 431 9th St NW, Hickory, NC, US

Gross Living Area: 2037 sq. ft

## Level 3



Space	Area (sq. ft)	Calculation <small>Coordinate Polygon Area Algorithm using inches</small>
2nd floor (Living area)	951	$  \begin{aligned}  & -((559.1 + 559.1) * (44.8 - 452.8) + (559.1 + 359.8) * (452.8 - 452.8) + (359.8 + 359.8) * (452.8 - 321) \\  & + (359.8 + 261) * (321 - 321) + (261 + 261) * (321 - 285.8) + (261 + 102.7) * (285.8 - 285.8) \\  & + (102.7 + 102.7) * (285.8 - 136.9) + (102.7 + 208.2) * (136.9 - 136.9) + (208.2 + 208.2) * (136.9 - 44.8) \\  & + (208.2 + 559.1) * (44.8 - 44.8)) * 0.5 * 0.00694  \end{aligned}  $