

Home data report

**3008 Maywood Avenue Southwest, Roanoke, Virginia 24014,
United States**



Total Area: 3392 sq. ft

Basement: 616 sq. ft, 1st Floor: 1551 sq. ft, 2nd Floor: 1225 sq. ft

Excluded: Utility 101 sq. ft, Garage 372 sq. ft, Patio 847 sq. ft, Walls: 256 sq. ft

Property summary

 **3** Floors

 **4** Bedrooms

 **2** Bathrooms

Home data report

**3008 Maywood Avenue Southwest, Roanoke, Virginia 24014,
United States**



1
Half baths



1
Garages

Home data report

3008 Maywood Avenue Southwest, Roanoke, Virginia 24014,
United States



Room dimensions

Floor 1 Below grade

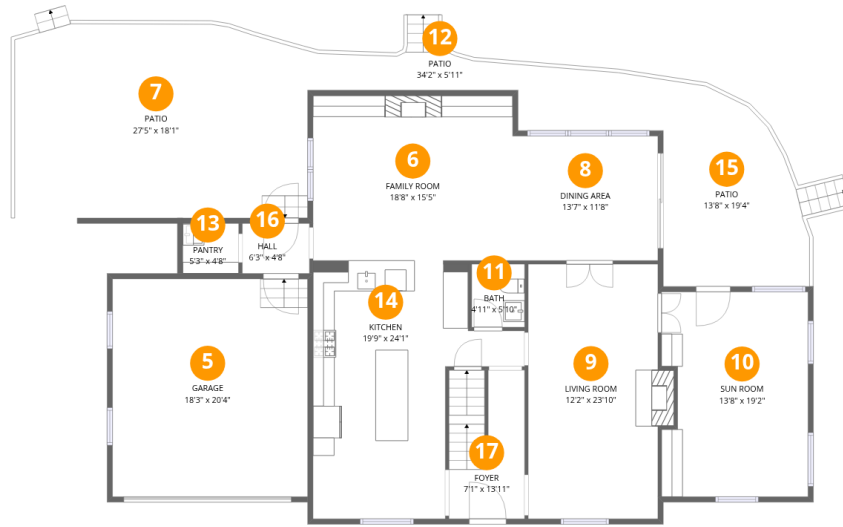
Total:616sqft

Excluded: 101sqft

#		Dimensions	sqft	Counted as living area
1	Utility	9'0" x 11'3"	101 sq. ft	No
2	Laundry	11'5" x 12'8"	144 sq. ft	Yes
3	Gym	19'7" x 10'4"	202 sq. ft	Yes
4	Recreation Room	12'5" x 21'11"	272 sq. ft	Yes

Home data report

3008 Maywood Avenue Southwest, Roanoke, Virginia 24014, United States



Room dimensions

Floor 2

Total:1551sqft

Excluded: 1219sqft

#		Dimensions	sqft	Counted as living area
5	Garage	18'3" x 20'4"	372 sq. ft	No
6	Family Room	18'8" x 15'5"	287 sq. ft	Yes
7	Patio	27'5" x 18'1"	496 sq. ft	No
8	Dining Area	13'7" x 11'8"	158 sq. ft	Yes
9	Living Room	12'2" x 23'10"	289 sq. ft	Yes
10	Sun Room	13'8" x 19'2"	262 sq. ft	Yes
11	Bath	4'11" x 5'10"	29 sq. ft	Yes
12	Patio	34'2" x 5'11"	203 sq. ft	No
13	Pantry	5'3" x 4'8"	25 sq. ft	Yes
14	Kitchen	19'9" x 24'1"	477 sq. ft	Yes
15	Patio	13'8" x 19'4"	264 sq. ft	No

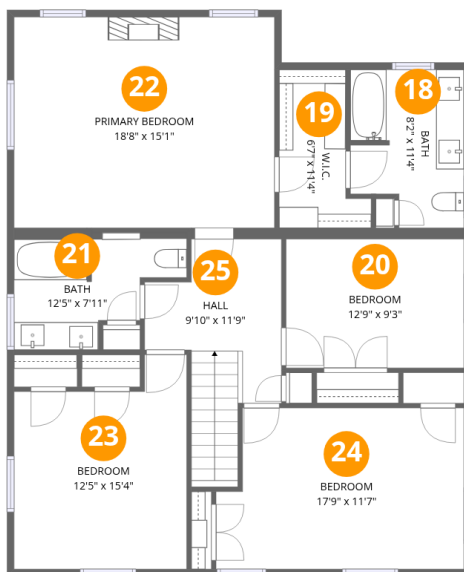
Home data report

**3008 Maywood Avenue Southwest, Roanoke, Virginia 24014,
United States**

#		Dimensions	sqft	Counted as living area
16	Hall	6'3" x 4'8"	29 sq. ft	Yes
17	Foyer	7'1" x 13'11"	98 sq. ft	Yes

Home data report

3008 Maywood Avenue Southwest, Roanoke, Virginia 24014, United States



Room dimensions

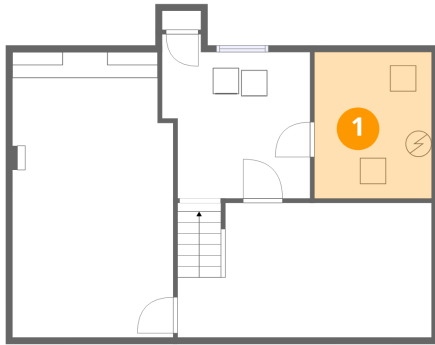
Floor 3

Total:1225sqft Excluded: 0sqft

#		Dimensions	sqft	Counted as living area
18	Bath	8'2" x 11'4"	92 sq. ft	Yes
19	W.I.C.	6'7" x 11'4"	75 sq. ft	Yes
20	Bedroom	12'9" x 9'3"	118 sq. ft	Yes
21	Bath	12'5" x 7'11"	98 sq. ft	Yes
22	Primary Bedroom	18'8" x 15'1"	281 sq. ft	Yes
23	Bedroom	12'5" x 15'4"	190 sq. ft	Yes
24	Bedroom	17'9" x 11'7"	205 sq. ft	Yes
25	Hall	9'10" x 11'9"	115 sq. ft	Yes

3008 Maywood Avenue Southwest, Roanoke, Virginia 24014,
United States

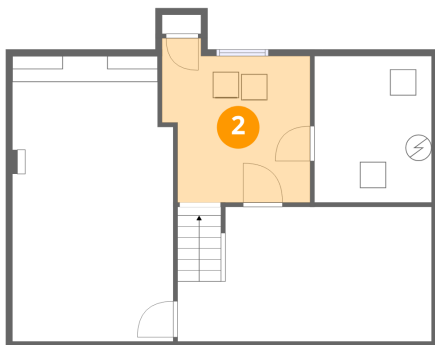
1 Floor 1 - Utility



Dimensions: 9'0" x 11'3"
Area: 101 sq. ft
Counted as living area: No

Heated: Yes
Finished: No
Enclosed: Yes
Contiguous: Yes
Permitted: Yes
Wet space: No
Addition: No
Conversion: No

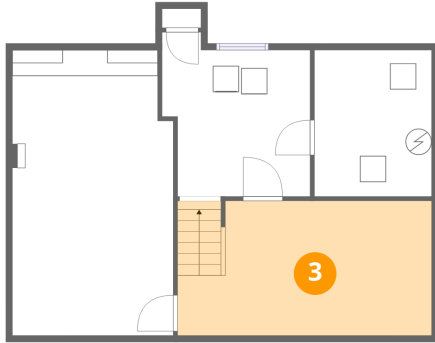
2 Floor 1 - Laundry



Dimensions: 11'5" x 12'8"
Area: 144 sq. ft
Counted as living area: Yes

Heated: Yes
Finished: Yes
Enclosed: Yes
Contiguous: Yes
Permitted: Yes
Wet space: No
Addition: No
Conversion: No

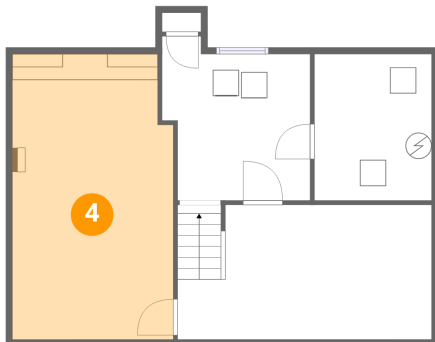
3 Floor 1 - Gym



Dimensions: 19'7" x 10'4"
Area: 202 sq. ft
Counted as living area: Yes

Heated: Yes
Finished: Yes
Enclosed: Yes
Contiguous: Yes
Permitted: Yes
Wet space: No
Addition: No
Conversion: No

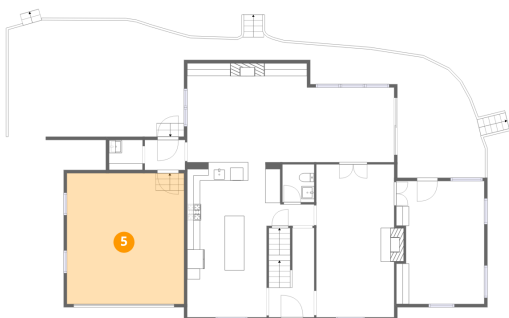
4 Floor 1 - Recreation Room



Dimensions: 12'5" x 21'11"
Area: 272 sq. ft
Counted as living area: Yes

Heated: Yes
Finished: Yes
Enclosed: Yes
Contiguous: Yes
Permitted: Yes
Wet space: No
Addition: No
Conversion: No

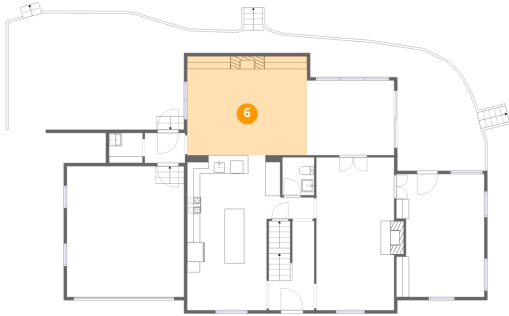
5 Floor 2 - Garage



Dimensions: 18'3" x 20'4"
Area: 372 sq. ft
Counted as living area: No

Heated: No
Finished: No
Enclosed: Yes
Contiguous: Yes
Permitted: Yes
Wet space: No
Addition: No
Conversion: No

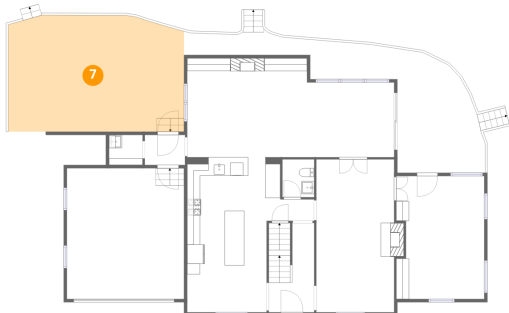
6 Floor 2 - Family Room



Dimensions: 18'8" x 15'5"
Area: 287 sq. ft
Counted as living area: Yes

Heated: Yes
Finished: Yes
Enclosed: Yes
Contiguous: Yes
Permitted: Yes
Wet space: No
Addition: No
Conversion: No

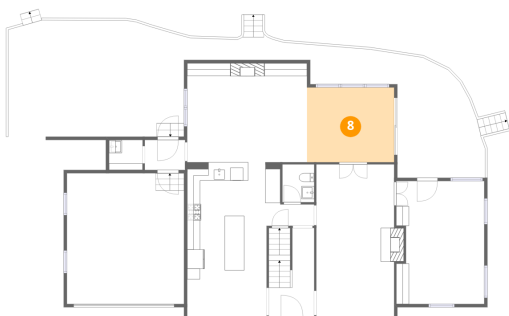
7 Floor 2 - Patio



Dimensions: 27'5" x 18'1"
Area: 496 sq. ft
Counted as living area: No

Heated: No
Finished: No
Enclosed: No
Contiguous: Yes
Permitted: Yes
Wet space: No
Addition: No
Conversion: No

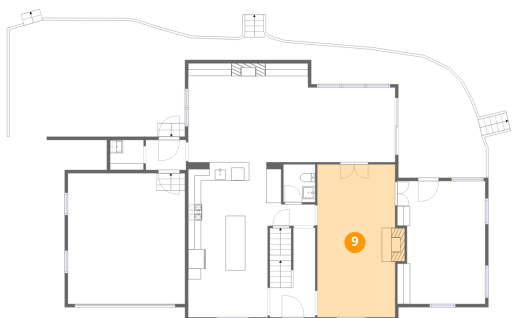
8 Floor 2 - Dining Area



Dimensions: 13'7" x 11'8"
Area: 158 sq. ft
Counted as living area: Yes

Heated: Yes
Finished: Yes
Enclosed: Yes
Contiguous: Yes
Permitted: Yes
Wet space: No
Addition: No
Conversion: No

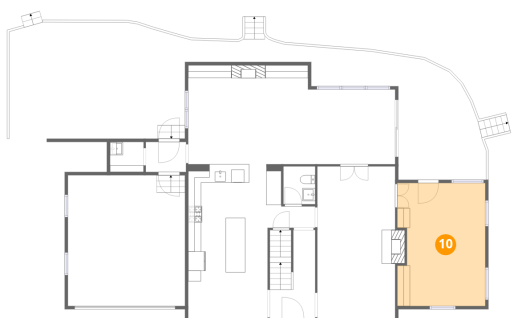
9 Floor 2 - Living Room



Dimensions: 12'2" x 23'10"
Area: 289 sq. ft
Counted as living area: Yes

Heated: Yes
Finished: Yes
Enclosed: Yes
Contiguous: Yes
Permitted: Yes
Wet space: No
Addition: No
Conversion: No

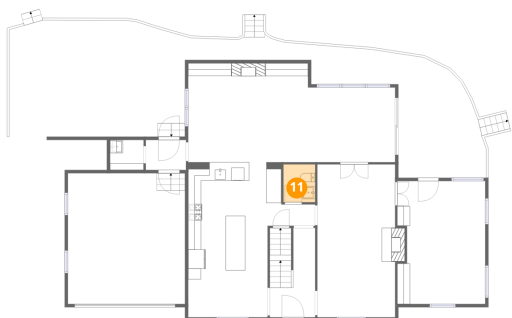
10 Floor 2 - Sun Room



Dimensions: 13'8" x 19'2"
Area: 262 sq. ft
Counted as living area: Yes

Heated: Yes
Finished: Yes
Enclosed: Yes
Contiguous: Yes
Permitted: Yes
Wet space: No
Addition: No
Conversion: No

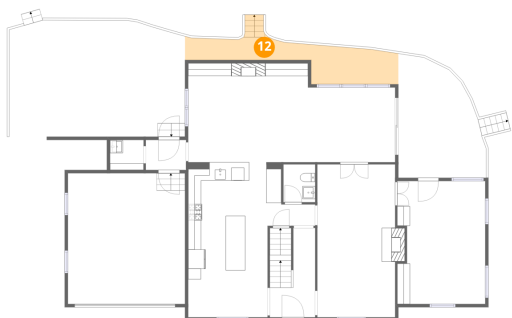
11 Floor 2 - Bath



Dimensions: 4'11" x 5'10"
Area: 29 sq. ft
Counted as living area: Yes

Heated: Yes
Finished: Yes
Enclosed: Yes
Contiguous: Yes
Permitted: Yes
Wet space: Yes
Addition: No
Conversion: No

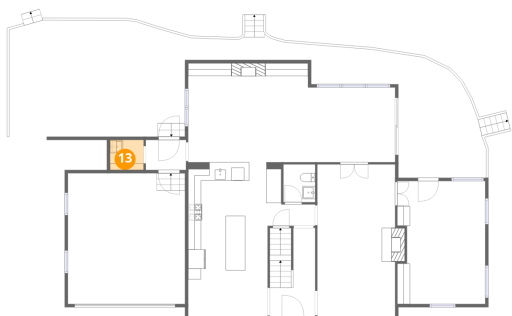
12 Floor 2 - Patio



Dimensions: 34'2" x 5'11"
Area: 203 sq. ft
Counted as living area: No

Heated: No
Finished: No
Enclosed: No
Contiguous: Yes
Permitted: Yes
Wet space: No
Addition: No
Conversion: No

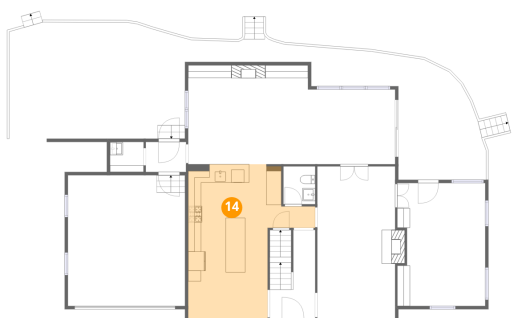
13 Floor 2 - Pantry



Dimensions: 5'3" x 4'8"
Area: 25 sq. ft
Counted as living area: Yes

Heated: Yes
Finished: Yes
Enclosed: Yes
Contiguous: Yes
Permitted: Yes
Wet space: No
Addition: No
Conversion: No

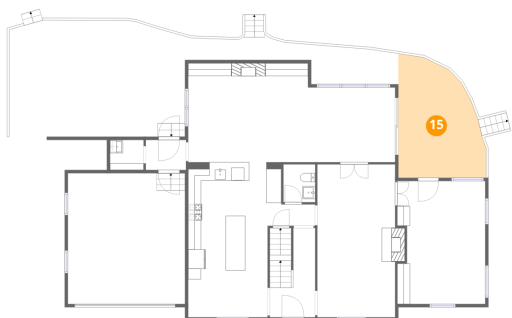
14 Floor 2 - Kitchen



Dimensions: 19'9" x 24'1"
Area: 477 sq. ft
Counted as living area: Yes

Heated: Yes
Finished: Yes
Enclosed: Yes
Contiguous: Yes
Permitted: Yes
Wet space: No
Addition: No
Conversion: No

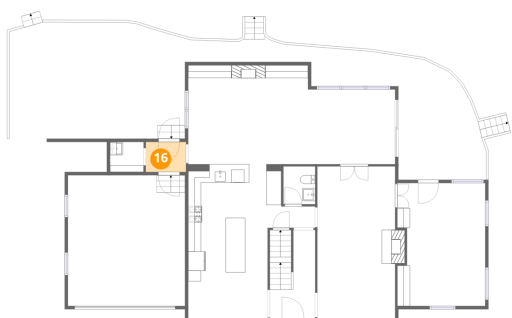
15 Floor 2 - Patio



Dimensions: 13'8" x 19'4"
Area: 264 sq. ft
Counted as living area: No

Heated: No
Finished: No
Enclosed: No
Contiguous: Yes
Permitted: Yes
Wet space: No
Addition: No
Conversion: No

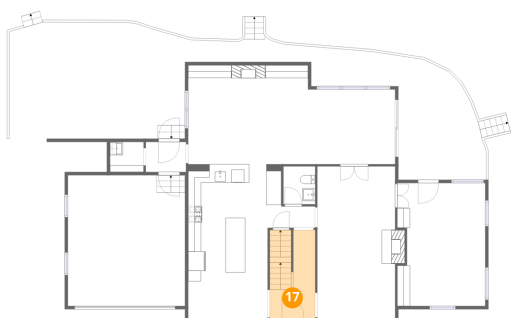
16 Floor 2 - Hall



Dimensions: 6'3" x 4'8"
Area: 29 sq. ft
Counted as living area: Yes

Heated: Yes
Finished: Yes
Enclosed: Yes
Contiguous: Yes
Permitted: Yes
Wet space: No
Addition: No
Conversion: No

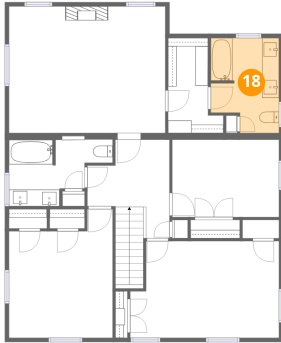
17 Floor 2 - Foyer



Dimensions: 7'1" x 13'11"
Area: 98 sq. ft
Counted as living area: Yes

Heated: Yes
Finished: Yes
Enclosed: Yes
Contiguous: Yes
Permitted: Yes
Wet space: No
Addition: No
Conversion: No

18 Floor 3 - Bath



Dimensions: 8'2" x 11'4"
Area: 92 sq. ft
Counted as living area: Yes

Heated: Yes
Finished: Yes
Enclosed: Yes
Contiguous: Yes
Permitted: Yes
Wet space: Yes
Addition: No
Conversion: No

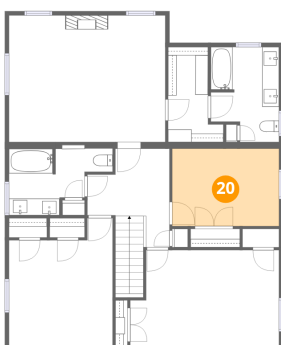
19 Floor 3 - W.I.C.



Dimensions: 6'7" x 11'4"
Area: 75 sq. ft
Counted as living area: Yes

Heated: Yes
Finished: Yes
Enclosed: Yes
Contiguous: Yes
Permitted: Yes
Wet space: No
Addition: No
Conversion: No

20 Floor 3 - Bedroom



Dimensions: 12'9" x 9'3"
Area: 118 sq. ft
Counted as living area: Yes

Heated: Yes
Finished: Yes
Enclosed: Yes
Contiguous: Yes
Permitted: Yes
Wet space: No
Addition: No
Conversion: No

3008 Maywood Avenue Southwest, Roanoke, Virginia 24014, United States

21 Floor 3 - Bath



Dimensions: 12'5" x 7'11"
Area: 98 sq. ft
Counted as living area: Yes

Heated: Yes
Finished: Yes
Enclosed: Yes
Contiguous: Yes
Permitted: Yes
Wet space: Yes
Addition: No
Conversion: No

22 Floor 3 - Primary Bedroom



Dimensions: 18'8" x 15'1"
Area: 281 sq. ft
Counted as living area: Yes

Heated: Yes
Finished: Yes
Enclosed: Yes
Contiguous: Yes
Permitted: Yes
Wet space: No
Addition: No
Conversion: No

23 Floor 3 - Bedroom



Dimensions: 12'5" x 15'4"
Area: 190 sq. ft
Counted as living area: Yes

Heated: Yes
Finished: Yes
Enclosed: Yes
Contiguous: Yes
Permitted: Yes
Wet space: No
Addition: No
Conversion: No

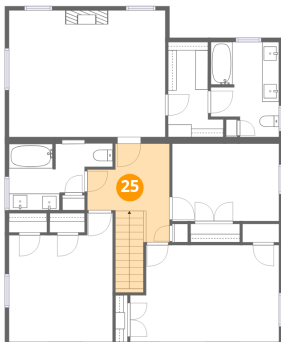
24 Floor 3 - Bedroom



Dimensions: 17'9" x 11'7"
Area: 205 sq. ft
Counted as living area: Yes

Heated: Yes
Finished: Yes
Enclosed: Yes
Contiguous: Yes
Permitted: Yes
Wet space: No
Addition: No
Conversion: No

25 Floor 3 - Hall



Dimensions: 9'10" x 11'9"
Area: 115 sq. ft
Counted as living area: Yes

Heated: Yes
Finished: Yes
Enclosed: Yes
Contiguous: Yes
Permitted: Yes
Wet space: No
Addition: No
Conversion: No