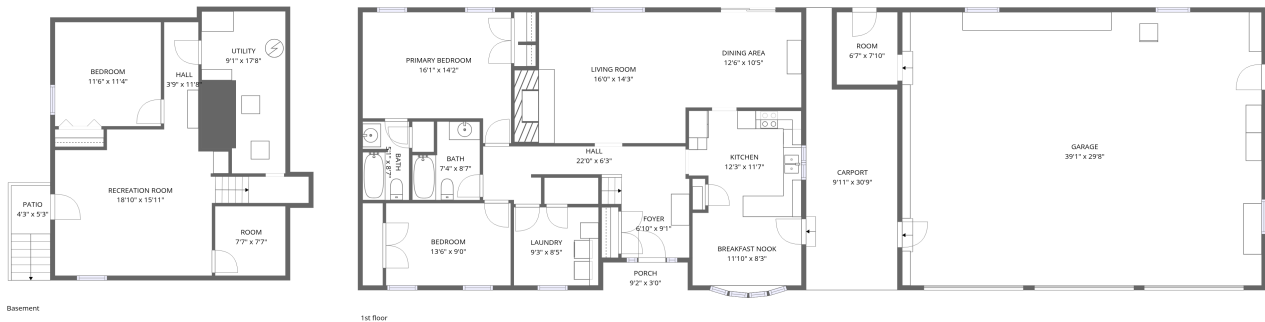


Home data report

99 Carefree Ln, Boyce, VA, US

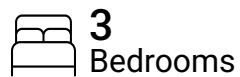


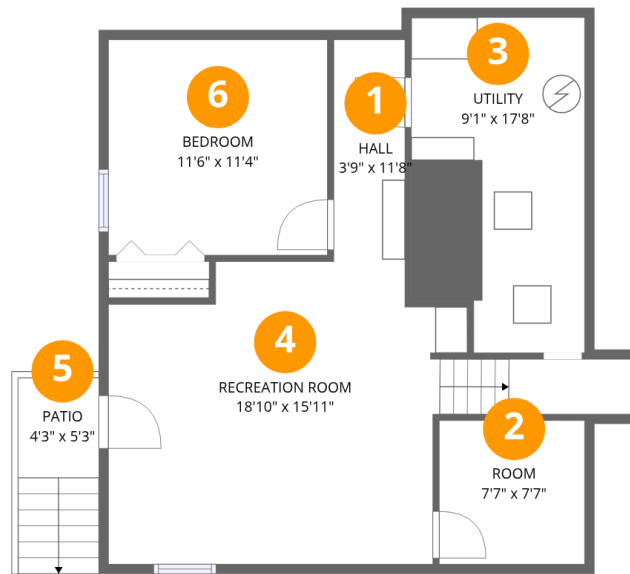
Total Area: 1951 sq. ft

Basement: 558 sq. ft, 1st Floor: 1393 sq. ft

Excluded: Utility 153 sq. ft, Patio 22 sq. ft, Garage 1163 sq. ft, Room 52 sq. ft, Porch 28 sq. ft, Carport 243 sq. ft, Walls: 217 sq. ft

Property summary





Room dimensions

Floor 1 Below grade

Total: 558sqft

Excluded: 175sqft

#		Dimensions	sqft	Counted as living area
1	Hall	3'9" x 11'8"	44 sq. ft	Yes
2	Room	7'7" x 7'7"	58 sq. ft	Yes
3	Utility	9'1" x 17'8"	152 sq. ft	No
4	Recreation Room	18'10" x 15'11"	272 sq. ft	Yes
5	Patio	4'3" x 5'3"	22 sq. ft	No
6	Bedroom	11'6" x 11'4"	131 sq. ft	Yes



Room dimensions

Floor 2

Total: 1393sqft

Excluded: 1486sqft

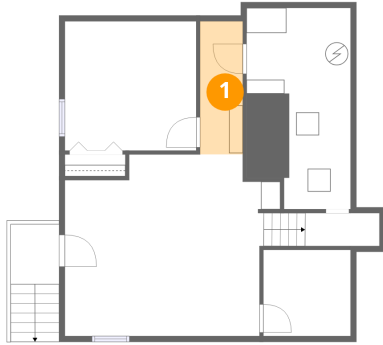
#		Dimensions	sqft	Counted as living area
7	Bath	5'1" x 8'7"	42 sq. ft	Yes
8	Bedroom	13'6" x 9'0"	122 sq. ft	Yes
9	Carport	9'11" x 30'9"	243 sq. ft	No
10	Foyer	6'10" x 9'1"	74 sq. ft	Yes
11	Breakfast Nook	11'10" x 8'3"	93 sq. ft	Yes
12	Primary Bedroom	16'1" x 14'2"	195 sq. ft	Yes
13	Garage	39'1" x 29'8"	1163 sq. ft	No
14	Porch	9'2" x 3'0"	28 sq. ft	No
15	Hall	22'0" x 6'3"	86 sq. ft	Yes
16	Laundry	9'3" x 8'5"	78 sq. ft	Yes
17	Dining Area	12'6" x 10'5"	131 sq. ft	Yes

Home data report

99 Carefree Ln,Boyce,VA,US

#		Dimensions	sqft	Counted as living area
18	Kitchen	12'3" x 11'7"	133 sq. ft	Yes
19	Bath	7'4" x 8'7"	53 sq. ft	Yes
20	Living Room	16'0" x 14'3"	249 sq. ft	Yes
21	Room	6'7" x 7'10"	52 sq. ft	No

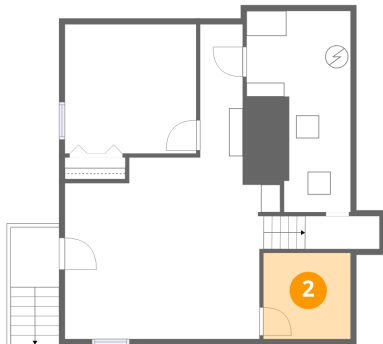
1 Floor 1 - Hall



Dimensions: 3'9" x 11'8"
Area: 44 sq. ft
Counted as living area: Yes

Heated: Yes
Finished: Yes
Enclosed: Yes
Contiguous: Yes
Permitted: Yes
Wet space: No
Addition: No
Conversion: No

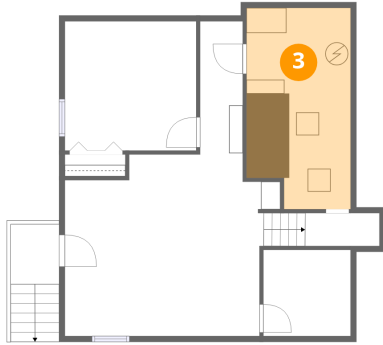
2 Floor 1 - Room



Dimensions: 7'7" x 7'7"
Area: 58 sq. ft
Counted as living area: Yes

Heated: Yes
Finished: Yes
Enclosed: Yes
Contiguous: Yes
Permitted: Yes
Wet space: No
Addition: No
Conversion: No

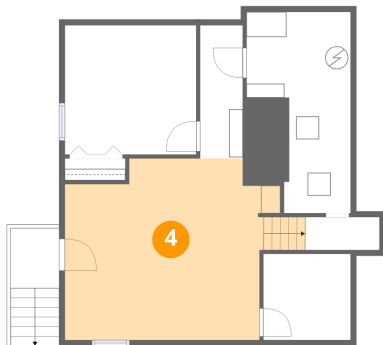
3 Floor 1 - Utility



Dimensions: 9'1" x 17'8"
Area: 152 sq. ft
Counted as living area: No

Heated: Yes
Finished: No
Enclosed: Yes
Contiguous: Yes
Permitted: Yes
Wet space: No
Addition: No
Conversion: No

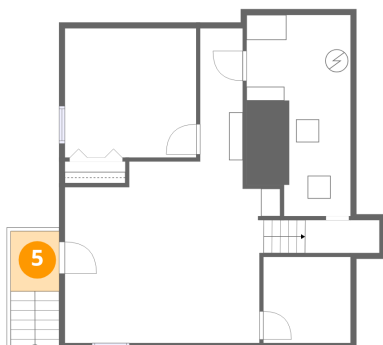
4 Floor 1 - Recreation Room



Dimensions: 18'10" x 15'11"
Area: 272 sq. ft
Counted as living area: Yes

Heated: Yes
Finished: Yes
Enclosed: Yes
Contiguous: Yes
Permitted: Yes
Wet space: No
Addition: No
Conversion: No

5 Floor 1 - Patio



Dimensions: 4'3" x 5'3"
Area: 22 sq. ft
Counted as living area: No

Heated: No
Finished: No
Enclosed: No
Contiguous: Yes
Permitted: Yes
Wet space: No
Addition: No
Conversion: No

6 Floor 1 - Bedroom



Dimensions: 11'6" x 11'4"
Area: 131 sq. ft
Counted as living area: Yes

Heated: Yes
Finished: Yes
Enclosed: Yes
Contiguous: Yes
Permitted: Yes
Wet space: No
Addition: No
Conversion: No

7 Floor 2 - Bath



Dimensions: 5'1" x 8'7"
Area: 42 sq. ft
Counted as living area: Yes

Heated: Yes
Finished: Yes
Enclosed: Yes
Contiguous: Yes
Permitted: Yes
Wet space: Yes
Addition: No
Conversion: No

8 Floor 2 - Bedroom



Dimensions: 13'6" x 9'0"
Area: 122 sq. ft
Counted as living area: Yes

Heated: Yes
Finished: Yes
Enclosed: Yes
Contiguous: Yes
Permitted: Yes
Wet space: No
Addition: No
Conversion: No

9 Floor 2 - Carport



Dimensions: 9'11" x 30'9"
Area: 243 sq. ft
Counted as living area: No

Heated: No
Finished: Yes
Enclosed: No
Contiguous: Yes
Permitted: Yes
Wet space: No
Addition: No
Conversion: No

10 Floor 2 - Foyer



Dimensions: 6'10" x 9'1"
Area: 74 sq. ft
Counted as living area: Yes

Heated: Yes
Finished: Yes
Enclosed: Yes
Contiguous: Yes
Permitted: Yes
Wet space: No
Addition: No
Conversion: No

11 Floor 2 - Breakfast Nook



Dimensions: 11'10" x 8'3"
Area: 93 sq. ft
Counted as living area: Yes

Heated: Yes
Finished: Yes
Enclosed: Yes
Contiguous: Yes
Permitted: Yes
Wet space: No
Addition: No
Conversion: No

12 Floor 2 - Primary Bedroom



Dimensions: 16'1" x 14'2"
Area: 195 sq. ft
Counted as living area: Yes

Heated: Yes
Finished: Yes
Enclosed: Yes
Contiguous: Yes
Permitted: Yes
Wet space: No
Addition: No
Conversion: No

13 Floor 2 - Garage



Dimensions: 39'1" x 29'8"
Area: 1163 sq. ft
Counted as living area: No

Heated: No
Finished: No
Enclosed: Yes
Contiguous: Yes
Permitted: Yes
Wet space: No
Addition: No
Conversion: No

14 Floor 2 - Porch



Dimensions: 9'2" x 3'0"
Area: 28 sq. ft
Counted as living area: No

Heated: No
Finished: No
Enclosed: No
Contiguous: Yes
Permitted: Yes
Wet space: No
Addition: No
Conversion: No

15 Floor 2 - Hall



Dimensions: 22'0" x 6'3"
Area: 86 sq. ft
Counted as living area: Yes

Heated: Yes
Finished: Yes
Enclosed: Yes
Contiguous: Yes
Permitted: Yes
Wet space: No
Addition: No
Conversion: No

16 Floor 2 - Laundry



Dimensions: 9'3" x 8'5"
Area: 78 sq. ft
Counted as living area: Yes

Heated: Yes
Finished: Yes
Enclosed: Yes
Contiguous: Yes
Permitted: Yes
Wet space: No
Addition: No
Conversion: No

17 Floor 2 - Dining Area



Dimensions: 12'6" x 10'5"
Area: 131 sq. ft
Counted as living area: Yes

Heated: Yes
Finished: Yes
Enclosed: Yes
Contiguous: Yes
Permitted: Yes
Wet space: No
Addition: No
Conversion: No

18 Floor 2 - Kitchen



Dimensions: 12'3" x 11'7"
Area: 133 sq. ft
Counted as living area: Yes

Heated: Yes
Finished: Yes
Enclosed: Yes
Contiguous: Yes
Permitted: Yes
Wet space: No
Addition: No
Conversion: No

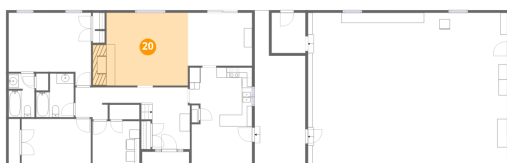
19 Floor 2 - Bath



Dimensions: 7'4" x 8'7"
Area: 53 sq. ft
Counted as living area: Yes

Heated: Yes
Finished: Yes
Enclosed: Yes
Contiguous: Yes
Permitted: Yes
Wet space: Yes
Addition: No
Conversion: No

20 Floor 2 - Living Room



Dimensions: 16'0" x 14'3"
Area: 249 sq. ft
Counted as living area: Yes

Heated: Yes
Finished: Yes
Enclosed: Yes
Contiguous: Yes
Permitted: Yes
Wet space: No
Addition: No
Conversion: No

21 Floor 2 - Room



Dimensions: 6'7" x 7'10"
Area: 52 sq. ft
Counted as living area: No

Heated: Yes
Finished: No
Enclosed: Yes
Contiguous: Yes
Permitted: Yes
Wet space: No
Addition: No
Conversion: No