

Home data report

291 1st Avenue Southwest, Palm Hill, Largo, Pinellas County, Florida, United States, 33770



Total Area: 2570 sq. ft

1st Floor: 1198 sq. ft, 2nd Floor: 1372 sq. ft

Excluded: Garage 483 sq. ft, Covered patio 125 sq. ft, Fireplace 16 sq. ft, Utility 14 sq. ft, Balcony 87 sq. ft, Walls: 176 sq. ft

Property summary

 **2** Floors

 **4** Bedrooms

 **3** Bathrooms

 **1** Garages

Home data report

291 1st Avenue Southwest, Palm Hill, Largo, Pinellas County, Florida, United States, 33770



Room dimensions

Floor 1 Total:1198sqft Excluded: 616sqft

#		Dimensions	sqft	Counted as living area
1	Bedroom	13'3" x 12'5"	165 sq. ft	Yes
2	Pantry	3'4" x 3'6"	11 sq. ft	Yes
3	Living Room	18'11" x 17'10"	337 sq. ft	Yes
4	Covered Patio	5'4" x 7'2"	38 sq. ft	No
5	Pantry	6'7" x 2'0"	13 sq. ft	Yes
6	Dining Area	13'3" x 11'3"	148 sq. ft	Yes
7	Laundry	10'8" x 7'5"	79 sq. ft	Yes
8	Kitchen	18'10" x 11'3"	211 sq. ft	Yes
9	Foyer	11'0" x 8'2"	90 sq. ft	Yes
10	Bath	8'6" x 8'11"	75 sq. ft	Yes
11	Covered Patio	5'4" x 17'7"	94 sq. ft	No

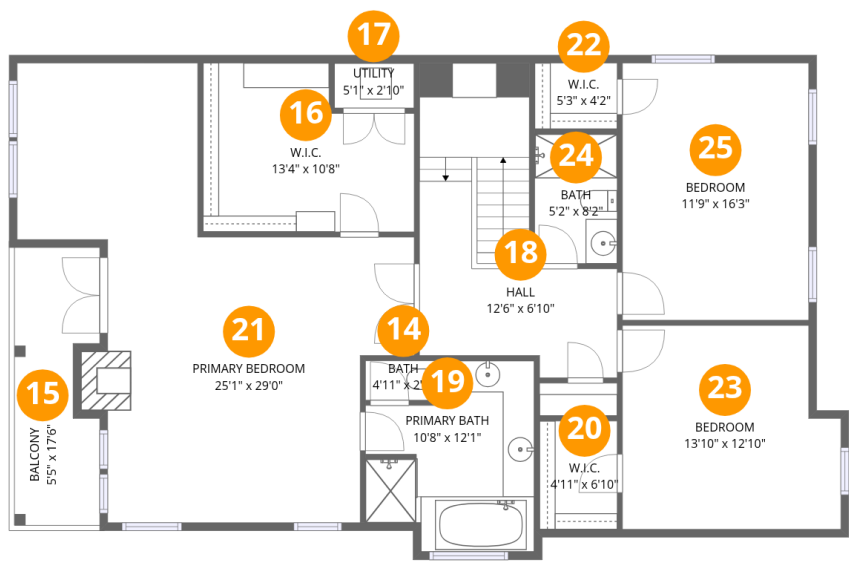
Home data report

291 1st Avenue Southwest, Palm Hill, Largo, Pinellas County,
Florida, United States, 33770

#		Dimensions	sqft	Counted as living area
12	W.I.C.	4'11" x 8'10"	43 sq. ft	Yes
13	Garage	24'1" x 21'5"	516 sq. ft	No

Home data report

291 1st Avenue Southwest, Palm Hill, Largo, Pinellas County,
Florida, United States, 33770



Room dimensions

Floor 2 Total:1372sqft Excluded: 109sqft

#		Dimensions	sqft	Counted as living area
14	Bath	4'11" x 2'6"	12 sq. ft	Yes
15	Balcony	5'5" x 17'6"	94 sq. ft	No
16	W.I.C.	13'4" x 10'8"	142 sq. ft	Yes
17	Utility	5'1" x 2'10"	14 sq. ft	No
18	Hall	12'6" x 6'10"	85 sq. ft	Yes
19	Primary Bath	10'8" x 12'1"	129 sq. ft	Yes
20	W.I.C.	4'11" x 6'10"	34 sq. ft	Yes
21	Primary Bedroom	25'1" x 29'0"	728 sq. ft	Yes
22	W.I.C.	5'3" x 4'2"	22 sq. ft	Yes
23	Bedroom	13'10" x 12'10"	178 sq. ft	Yes
24	Bath	5'2" x 8'2"	42 sq. ft	Yes

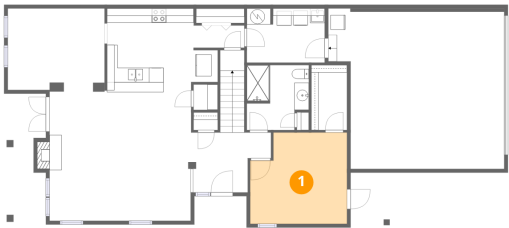
Home data report

291 1st Avenue Southwest, Palm Hill, Largo, Pinellas County,
Florida, United States, 33770

#		Dimensions	sqft	Counted as living area
25	Bedroom	11'9" x 16'3"	191 sq. ft	Yes

291 1st Avenue Southwest, Palm Hill, Largo, Pinellas County,
Florida, United States, 33770

1 Floor 1 - Bedroom



Dimensions: 13'3" x 12'5"
Area: 165 sq. ft
Counted as living area: Yes

Heated: Yes
Finished: Yes
Enclosed: Yes
Contiguous: Yes
Permitted: Yes
Wet space: No
Addition: No
Conversion: No

2 Floor 1 - Pantry



Dimensions: 3'4" x 3'6"
Area: 11 sq. ft
Counted as living area: Yes

Heated: Yes
Finished: Yes
Enclosed: Yes
Contiguous: Yes
Permitted: Yes
Wet space: No
Addition: No
Conversion: No

291 1st Avenue Southwest, Palm Hill, Largo, Pinellas County,
Florida, United States, 33770

3 Floor 1 - Living Room



Dimensions: 18'11" x 17'10"
Area: 337 sq. ft
Counted as living area: Yes

Heated: Yes
Finished: Yes
Enclosed: Yes
Contiguous: Yes
Permitted: Yes
Wet space: No
Addition: No
Conversion: No

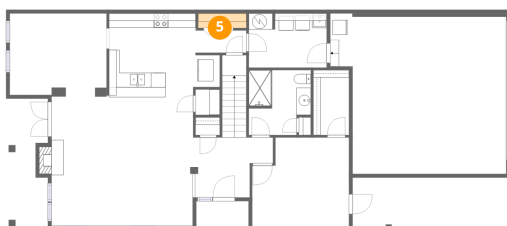
4 Floor 1 - Covered Patio



Dimensions: 5'4" x 7'2"
Area: 38 sq. ft
Counted as living area: No

Heated: No
Finished: No
Enclosed: No
Contiguous: Yes
Permitted: Yes
Wet space: No
Addition: No
Conversion: No

5 Floor 1 - Pantry



Dimensions: 6'7" x 2'0"
Area: 13 sq. ft
Counted as living area: Yes

Heated: Yes
Finished: Yes
Enclosed: Yes
Contiguous: Yes
Permitted: Yes
Wet space: No
Addition: No
Conversion: No

Home data report

291 1st Avenue Southwest, Palm Hill, Largo, Pinellas County,
Florida, United States, 33770

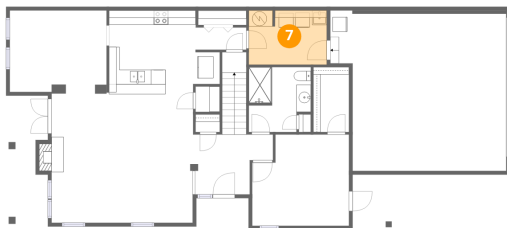
6 Floor 1 - Dining Area



Dimensions: 13'3" x 11'3"
Area: 148 sq. ft
Counted as living area: Yes

Heated: Yes
Finished: Yes
Enclosed: Yes
Contiguous: Yes
Permitted: Yes
Wet space: No
Addition: No
Conversion: No

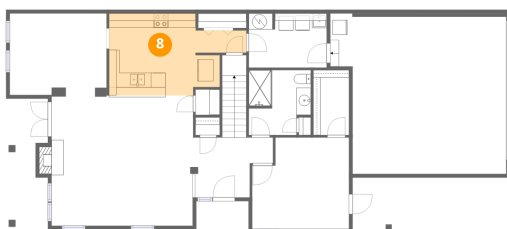
7 Floor 1 - Laundry



Dimensions: 10'8" x 7'5"
Area: 79 sq. ft
Counted as living area: Yes

Heated: Yes
Finished: Yes
Enclosed: Yes
Contiguous: Yes
Permitted: Yes
Wet space: No
Addition: No
Conversion: No

8 Floor 1 - Kitchen



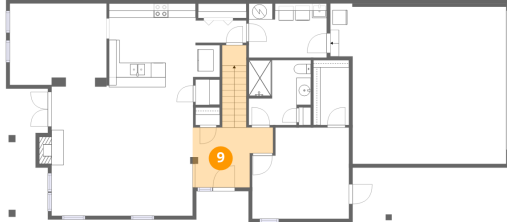
Dimensions: 18'10" x 11'3"
Area: 211 sq. ft
Counted as living area: Yes

Heated: Yes
Finished: Yes
Enclosed: Yes
Contiguous: Yes
Permitted: Yes
Wet space: No
Addition: No
Conversion: No

Home data report

291 1st Avenue Southwest, Palm Hill, Largo, Pinellas County,
Florida, United States, 33770

9 Floor 1 - Foyer



Dimensions: 11'0" x 8'2"
Area: 90 sq. ft
Counted as living area: Yes

Heated: Yes
Finished: Yes
Enclosed: Yes
Contiguous: Yes
Permitted: Yes
Wet space: No
Addition: No
Conversion: No

10 Floor 1 - Bath



Dimensions: 8'6" x 8'11"
Area: 75 sq. ft
Counted as living area: Yes

Heated: Yes
Finished: Yes
Enclosed: Yes
Contiguous: Yes
Permitted: Yes
Wet space: Yes
Addition: No
Conversion: No

11 Floor 1 - Covered Patio



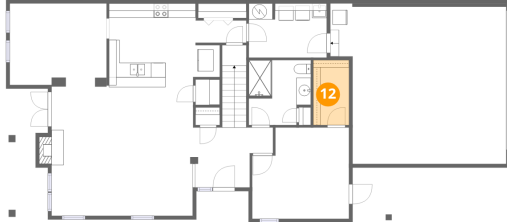
Dimensions: 5'4" x 17'7"
Area: 94 sq. ft
Counted as living area: No

Heated: No
Finished: No
Enclosed: No
Contiguous: Yes
Permitted: Yes
Wet space: No
Addition: No
Conversion: No

Home data report

291 1st Avenue Southwest, Palm Hill, Largo, Pinellas County,
Florida, United States, 33770

12 Floor 1 - W.I.C.



Dimensions: 4'11" x 8'10"
Area: 43 sq. ft
Counted as living area: Yes

Heated: Yes
Finished: Yes
Enclosed: Yes
Contiguous: Yes
Permitted: Yes
Wet space: No
Addition: No
Conversion: No

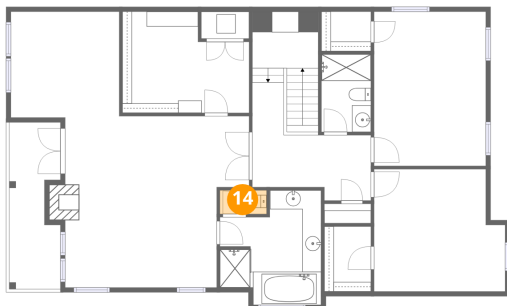
13 Floor 1 - Garage



Dimensions: 24'1" x 21'5"
Area: 516 sq. ft
Counted as living area: No

Heated: No
Finished: No
Enclosed: Yes
Contiguous: Yes
Permitted: Yes
Wet space: No
Addition: No
Conversion: No

14 Floor 2 - Bath



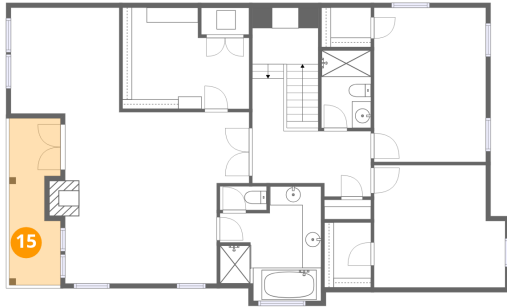
Dimensions: 4'11" x 2'6"
Area: 12 sq. ft
Counted as living area: Yes

Heated: Yes
Finished: Yes
Enclosed: Yes
Contiguous: Yes
Permitted: Yes
Wet space: Yes
Addition: No
Conversion: No

Home data report

291 1st Avenue Southwest, Palm Hill, Largo, Pinellas County,
Florida, United States, 33770

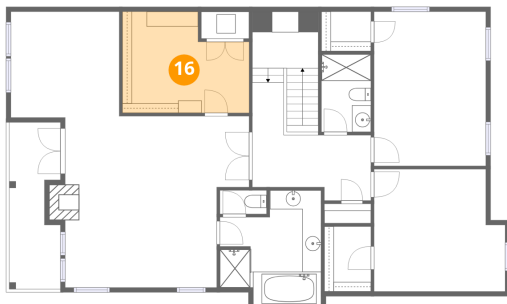
15 Floor 2 - Balcony



Dimensions: 5'5" x 17'6"
Area: 94 sq. ft
Counted as living area: No

Heated: No
Finished: No
Enclosed: No
Contiguous: Yes
Permitted: Yes
Wet space: No
Addition: No
Conversion: No

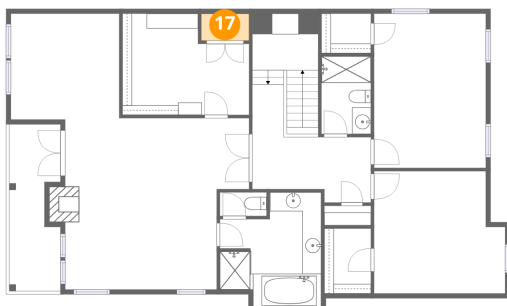
16 Floor 2 - W.I.C.



Dimensions: 13'4" x 10'8"
Area: 142 sq. ft
Counted as living area: Yes

Heated: Yes
Finished: Yes
Enclosed: Yes
Contiguous: Yes
Permitted: Yes
Wet space: No
Addition: No
Conversion: No

17 Floor 2 - Utility



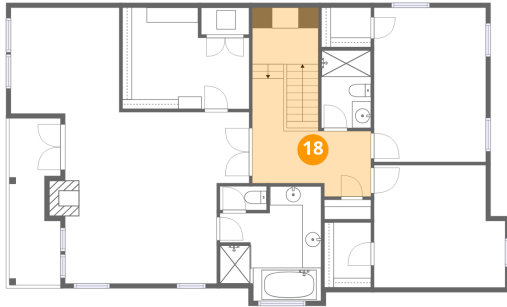
Dimensions: 5'1" x 2'10"
Area: 14 sq. ft
Counted as living area: No

Heated: Yes
Finished: No
Enclosed: Yes
Contiguous: Yes
Permitted: Yes
Wet space: No
Addition: No
Conversion: No

Home data report

291 1st Avenue Southwest, Palm Hill, Largo, Pinellas County,
Florida, United States, 33770

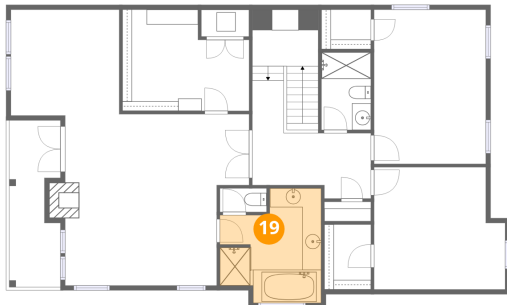
18 Floor 2 - Hall



Dimensions: 12'6" x 6'10"
Area: 85 sq. ft
Counted as living area: Yes

Heated: Yes
Finished: Yes
Enclosed: Yes
Contiguous: Yes
Permitted: Yes
Wet space: No
Addition: No
Conversion: No

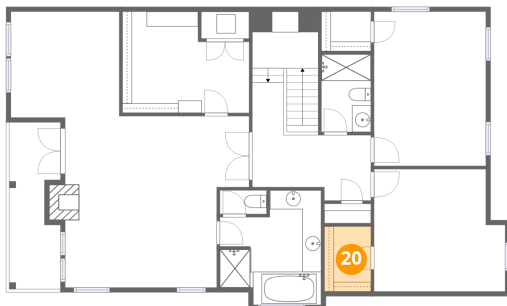
19 Floor 2 - Primary Bath



Dimensions: 10'8" x 12'1"
Area: 129 sq. ft
Counted as living area: Yes

Heated: Yes
Finished: Yes
Enclosed: Yes
Contiguous: Yes
Permitted: Yes
Wet space: Yes
Addition: No
Conversion: No

20 Floor 2 - W.I.C.



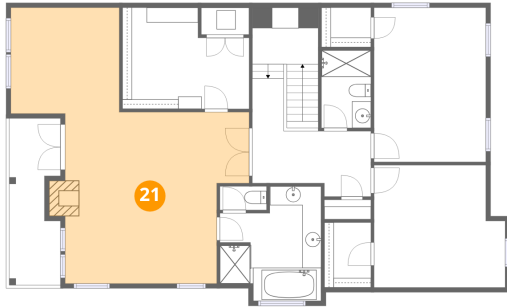
Dimensions: 4'11" x 6'10"
Area: 34 sq. ft
Counted as living area: Yes

Heated: Yes
Finished: Yes
Enclosed: Yes
Contiguous: Yes
Permitted: Yes
Wet space: No
Addition: No
Conversion: No

Home data report

291 1st Avenue Southwest, Palm Hill, Largo, Pinellas County,
Florida, United States, 33770

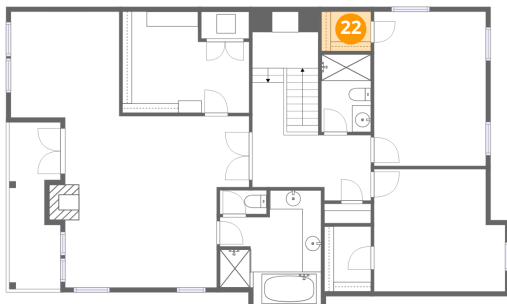
21 Floor 2 - Primary Bedroom



Dimensions: 25'1" x 29'0"
Area: 728 sq. ft
Counted as living area: Yes

Heated: Yes
Finished: Yes
Enclosed: Yes
Contiguous: Yes
Permitted: Yes
Wet space: No
Addition: No
Conversion: No

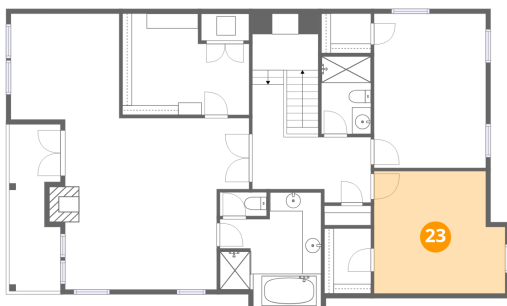
22 Floor 2 - W.I.C.



Dimensions: 5'3" x 4'2"
Area: 22 sq. ft
Counted as living area: Yes

Heated: Yes
Finished: Yes
Enclosed: Yes
Contiguous: Yes
Permitted: Yes
Wet space: No
Addition: No
Conversion: No

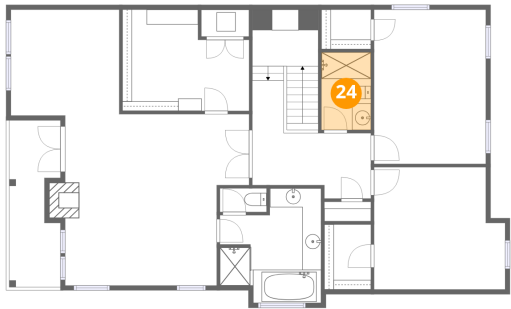
23 Floor 2 - Bedroom



Dimensions: 13'10" x 12'10"
Area: 178 sq. ft
Counted as living area: Yes

Heated: Yes
Finished: Yes
Enclosed: Yes
Contiguous: Yes
Permitted: Yes
Wet space: No
Addition: No
Conversion: No

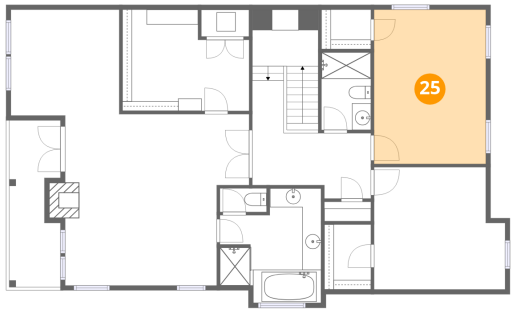
24 Floor 2 - Bath



Dimensions: 5'2" x 8'2"
Area: 42 sq. ft
Counted as living area: Yes

Heated: Yes
Finished: Yes
Enclosed: Yes
Contiguous: Yes
Permitted: Yes
Wet space: Yes
Addition: No
Conversion: No

25 Floor 2 - Bedroom



Dimensions: 11'9" x 16'3"
Area: 191 sq. ft
Counted as living area: Yes

Heated: Yes
Finished: Yes
Enclosed: Yes
Contiguous: Yes
Permitted: Yes
Wet space: No
Addition: No
Conversion: No