

Home data report

# 7B Statesboro Dr, Belle Fourche, SD, US




**Total Area: 1190 sq. ft**

1st Floor: 686 sq. ft, 2nd Floor: 504 sq. ft

Excluded: Garage 283 sq. ft, Walls: 121 sq. ft

## Property summary

 **2** Floors

 **2** Bedrooms

 **1** Bathrooms

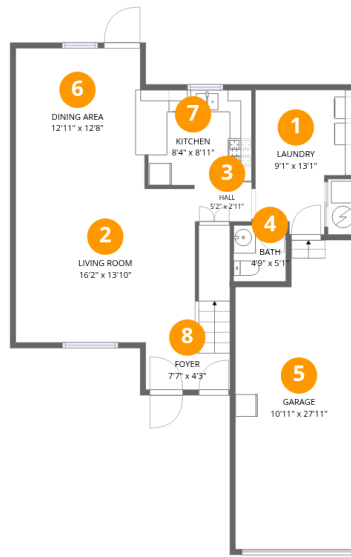
Home data report

## 7B Statesboro Dr, Belle Fourche, SD, US

 **1**  
Half baths

 **1**  
Garages

# 7B Statesboro Dr, Belle Fourche, SD, US



## Room dimensions

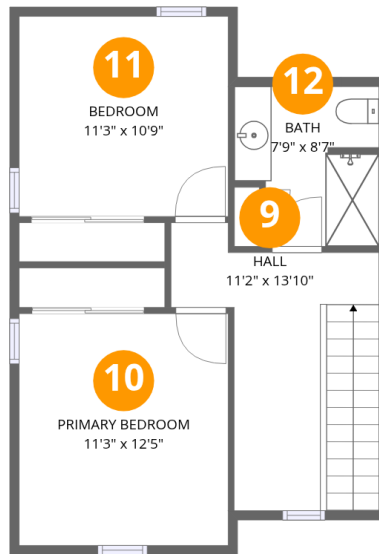
Floor 1

Total: 686sqft

Excluded: 283sqft

#		Dimensions	sqft	Counted as living area
1	Laundry	9'1" x 13'1"	100 sq. ft	Yes
2	Living Room	16'2" x 13'10"	256 sq. ft	Yes
3	Hall	5'2" x 2'11"	15 sq. ft	Yes
4	Bath	4'9" x 5'1"	24 sq. ft	Yes
5	Garage	10'11" x 27'11"	283 sq. ft	No
6	Dining Area	12'11" x 12'8"	157 sq. ft	Yes
7	Kitchen	8'4" x 8'11"	74 sq. ft	Yes
8	Foyer	7'7" x 4'3"	32 sq. ft	Yes

# 7B Statesboro Dr, Belle Fourche, SD, US



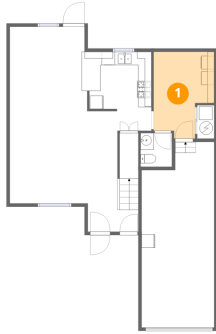
## Room dimensions

Floor 2

Total: 504 sqft Excluded: 0 sqft

#		Dimensions	sqft	Counted as living area
9	Hall	11'2" x 13'10"	123 sq. ft	Yes
10	Primary Bedroom	11'3" x 12'5"	140 sq. ft	Yes
11	Bedroom	11'3" x 10'9"	121 sq. ft	Yes
12	Bath	7'9" x 8'7"	60 sq. ft	Yes

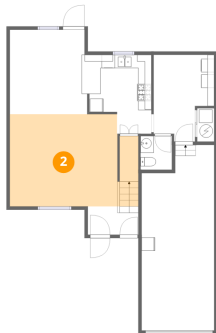
## 1 Floor 1 - Laundry



Dimensions: 9'1" x 13'1"  
Area: 100 sq. ft  
Counted as living area: Yes

Heated: Yes  
Finished: Yes  
Enclosed: Yes  
Contiguous: Yes  
Permitted: Yes  
Wet space: No  
Addition: No  
Conversion: No

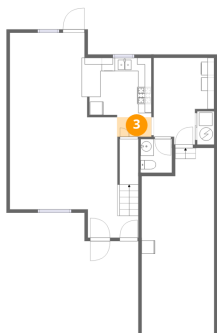
## 2 Floor 1 - Living Room



Dimensions: 16'2" x 13'10"  
Area: 256 sq. ft  
Counted as living area: Yes

Heated: Yes  
Finished: Yes  
Enclosed: Yes  
Contiguous: Yes  
Permitted: Yes  
Wet space: No  
Addition: No  
Conversion: No

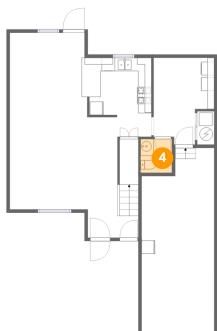
### 3 Floor 1 - Hall



Dimensions: 5'2" x 2'11"  
Area: 15 sq. ft  
Counted as living area: Yes

Heated: Yes  
Finished: Yes  
Enclosed: Yes  
Contiguous: Yes  
Permitted: Yes  
Wet space: No  
Addition: No  
Conversion: No

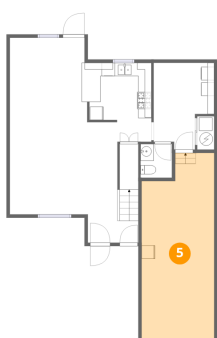
### 4 Floor 1 - Bath



Dimensions: 4'9" x 5'1"  
Area: 24 sq. ft  
Counted as living area: Yes

Heated: Yes  
Finished: Yes  
Enclosed: Yes  
Contiguous: Yes  
Permitted: Yes  
Wet space: Yes  
Addition: No  
Conversion: No

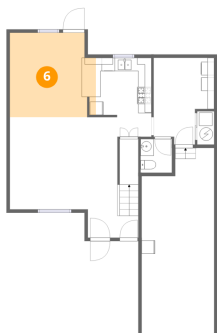
### 5 Floor 1 - Garage



Dimensions: 10'11" x 27'11"  
Area: 283 sq. ft  
Counted as living area: No

Heated: No  
Finished: No  
Enclosed: Yes  
Contiguous: Yes  
Permitted: Yes  
Wet space: No  
Addition: No  
Conversion: No

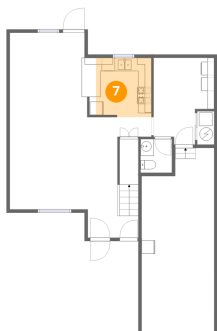
## 6 Floor 1 - Dining Area



Dimensions: 12'11" x 12'8"  
Area: 157 sq. ft  
Counted as living area: Yes

Heated: Yes  
Finished: Yes  
Enclosed: Yes  
Contiguous: Yes  
Permitted: Yes  
Wet space: No  
Addition: No  
Conversion: No

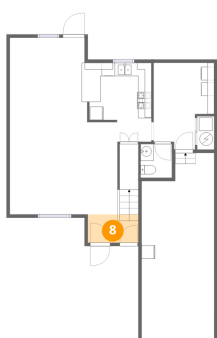
## 7 Floor 1 - Kitchen



Dimensions: 8'4" x 8'11"  
Area: 74 sq. ft  
Counted as living area: Yes

Heated: Yes  
Finished: Yes  
Enclosed: Yes  
Contiguous: Yes  
Permitted: Yes  
Wet space: No  
Addition: No  
Conversion: No

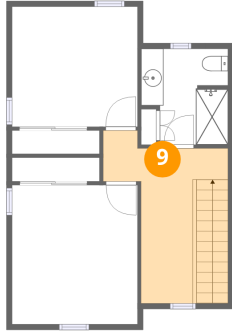
## 8 Floor 1 - Foyer



Dimensions: 7'7" x 4'3"  
Area: 32 sq. ft  
Counted as living area: Yes

Heated: Yes  
Finished: Yes  
Enclosed: Yes  
Contiguous: Yes  
Permitted: Yes  
Wet space: No  
Addition: No  
Conversion: No

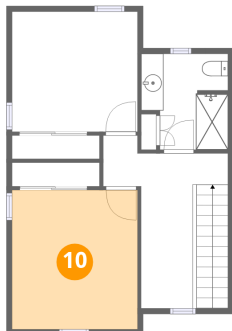
**9** Floor 2 - Hall



Dimensions: 11'2" x 13'10"  
Area: 123 sq. ft  
Counted as living area: Yes

Heated: Yes  
Finished: Yes  
Enclosed: Yes  
Contiguous: Yes  
Permitted: Yes  
Wet space: No  
Addition: No  
Conversion: No

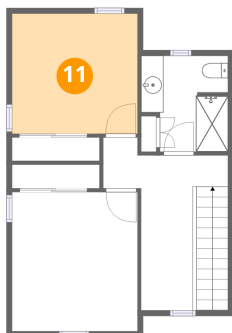
**10** Floor 2 - Primary Bedroom



Dimensions: 11'3" x 12'5"  
Area: 140 sq. ft  
Counted as living area: Yes

Heated: Yes  
Finished: Yes  
Enclosed: Yes  
Contiguous: Yes  
Permitted: Yes  
Wet space: No  
Addition: No  
Conversion: No

**11** Floor 2 - Bedroom

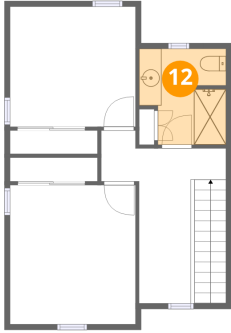


Dimensions: 11'3" x 10'9"  
Area: 121 sq. ft  
Counted as living area: Yes

Heated: Yes  
Finished: Yes  
Enclosed: Yes  
Contiguous: Yes  
Permitted: Yes  
Wet space: No  
Addition: No  
Conversion: No

**12** Floor 2 - Bath

---



Dimensions: 7'9" x 8'7"  
Area: 60 sq. ft  
Counted as living area: Yes

Heated: Yes  
Finished: Yes  
Enclosed: Yes  
Contiguous: Yes  
Permitted: Yes  
Wet space: Yes  
Addition: No  
Conversion: No