

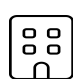
Home data report


7604 Summerdawn Drive Southeast, Owens Cross Roads,
Madison County, Alabama, United States, 35763





Total Area: 3341 sq. ft
1st Floor: 2228 sq. ft, 2nd Floor: 1113 sq. ft
Excluded: Garage 632 sq. ft, Low ceiling 460 sq. ft, Attic 155 sq. ft

Property summary

 **2** Floors

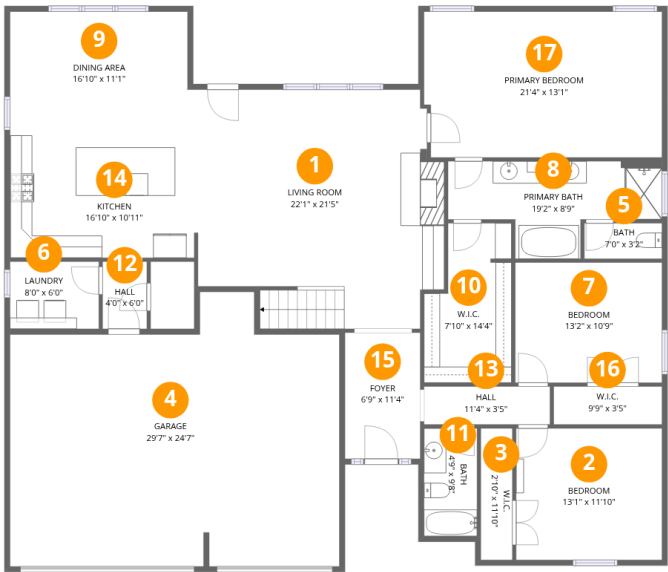
 **4** Bedrooms

 **3** Bathrooms

 **1** Garages

Home data report

7604 Summerdawn Drive Southeast, Owens Cross Roads,
Madison County, Alabama, United States, 35763



Room dimensions

Floor 1 Total:2228sqft Excluded: 632sqft

#		Dimensions	sqft	Counted as living area
1	Living Room	22'1" x 21'5"	474 sq. ft	Yes
2	Bedroom	13'1" x 11'10"	154 sq. ft	Yes
3	W.I.C.	2'10" x 11'10"	33 sq. ft	Yes
4	Garage	29'7" x 24'7"	727 sq. ft	No
5	Bath	7'0" x 3'2"	22 sq. ft	Yes
6	Laundry	8'0" x 6'0"	48 sq. ft	Yes
7	Bedroom	13'2" x 10'9"	142 sq. ft	Yes
8	Primary Bath	19'2" x 8'9"	168 sq. ft	Yes
9	Dining Area	16'10" x 11'1"	188 sq. ft	Yes
10	W.I.C.	7'10" x 14'4"	112 sq. ft	Yes
11	Bath	4'9" x 9'8"	46 sq. ft	Yes

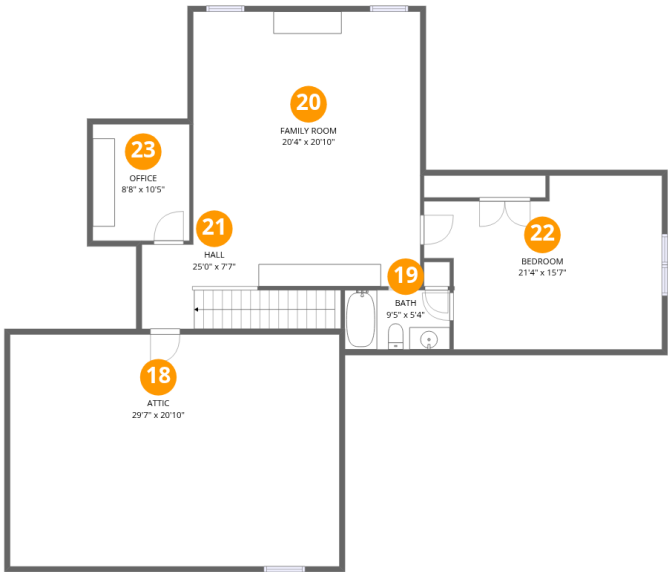
Home data report

**7604 Summerdawn Drive Southeast, Owens Cross Roads,
Madison County, Alabama, United States, 35763**

#		Dimensions	sqft	Counted as living area
12	Hall	4'0" x 6'0"	24 sq. ft	Yes
13	Hall	11'4" x 3'5"	39 sq. ft	Yes
14	Kitchen	16'10" x 10'11"	185 sq. ft	Yes
15	Foyer	6'9" x 11'4"	76 sq. ft	Yes
16	W.I.C.	9'9" x 3'5"	33 sq. ft	Yes
17	Primary Bedroom	21'4" x 13'1"	279 sq. ft	Yes

Home data report

7604 Summerdawn Drive Southeast, Owens Cross Roads,
Madison County, Alabama, United States, 35763



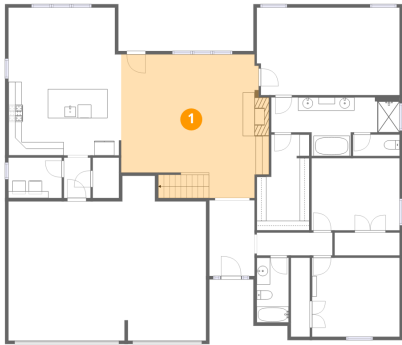
Room dimensions

Floor 2 Total:1113sqft Excluded: 615sqft

#		Dimensions	sqft	Counted as living area
18	Attic	29'7" x 20'10"	615 sq. ft	No
19	Bath	9'5" x 5'4"	50 sq. ft	Yes
20	Family Room	20'4" x 20'10"	423 sq. ft	Yes
21	Hall	25'0" x 7'7"	189 sq. ft	Yes
22	Bedroom	21'4" x 15'7"	333 sq. ft	Yes
23	Office	8'8" x 10'5"	91 sq. ft	Yes

7604 Summerdawn Drive Southeast, Owens Cross Roads,
Madison County, Alabama, United States, 35763

1 Floor 1 - Living Room



Dimensions: 22'1" x 21'5"
Area: 474 sq. ft
Counted as living area: Yes

Heated: Yes
Finished: Yes
Enclosed: Yes
Contiguous: Yes
Permitted: Yes
Wet space: No
Addition: No
Conversion: No

2 Floor 1 - Bedroom



Dimensions: 13'1" x 11'10"
Area: 154 sq. ft
Counted as living area: Yes

Heated: Yes
Finished: Yes
Enclosed: Yes
Contiguous: Yes
Permitted: Yes
Wet space: No
Addition: No
Conversion: No

**7604 Summerdawn Drive Southeast, Owens Cross Roads,
Madison County, Alabama, United States, 35763**

3 Floor 1 - W.I.C.



Dimensions: 2'10" x 11'10"
Area: 33 sq. ft
Counted as living area: Yes

Heated: Yes
Finished: Yes
Enclosed: Yes
Contiguous: Yes
Permitted: Yes
Wet space: No
Addition: No
Conversion: No

4 Floor 1 - Garage



Dimensions: 29'7" x 24'7"
Area: 727 sq. ft
Counted as living area: No

Heated: No
Finished: No
Enclosed: Yes
Contiguous: Yes
Permitted: Yes
Wet space: No
Addition: No
Conversion: No

5 Floor 1 - Bath



Dimensions: 7'0" x 3'2"
Area: 22 sq. ft
Counted as living area: Yes

Heated: Yes
Finished: Yes
Enclosed: Yes
Contiguous: Yes
Permitted: Yes
Wet space: No
Addition: No
Conversion: No

**7604 Summerdawn Drive Southeast, Owens Cross Roads,
Madison County, Alabama, United States, 35763**

6 Floor 1 - Laundry



Dimensions: 8'0" x 6'0"
Area: 48 sq. ft
Counted as living area: Yes

Heated: Yes
Finished: Yes
Enclosed: Yes
Contiguous: Yes
Permitted: Yes
Wet space: No
Addition: No
Conversion: No

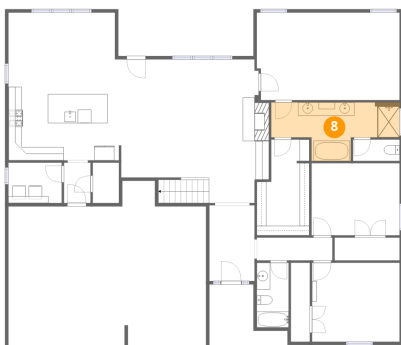
7 Floor 1 - Bedroom



Dimensions: 13'2" x 10'9"
Area: 142 sq. ft
Counted as living area: Yes

Heated: Yes
Finished: Yes
Enclosed: Yes
Contiguous: Yes
Permitted: Yes
Wet space: No
Addition: No
Conversion: No

8 Floor 1 - Primary Bath



Dimensions: 19'2" x 8'9"
Area: 168 sq. ft
Counted as living area: Yes

Heated: Yes
Finished: Yes
Enclosed: Yes
Contiguous: Yes
Permitted: Yes
Wet space: Yes
Addition: No
Conversion: No

**7604 Summerdawn Drive Southeast, Owens Cross Roads,
Madison County, Alabama, United States, 35763**

9 Floor 1 - Dining Area



Dimensions: 16'10" x 11'1"
Area: 188 sq. ft
Counted as living area: Yes

Heated: Yes
Finished: Yes
Enclosed: Yes
Contiguous: Yes
Permitted: Yes
Wet space: No
Addition: No
Conversion: No

10 Floor 1 - W.I.C.



Dimensions: 7'10" x 14'4"
Area: 112 sq. ft
Counted as living area: Yes

Heated: Yes
Finished: Yes
Enclosed: Yes
Contiguous: Yes
Permitted: Yes
Wet space: No
Addition: No
Conversion: No

11 Floor 1 - Bath



Dimensions: 4'9" x 9'8"
Area: 46 sq. ft
Counted as living area: Yes

Heated: Yes
Finished: Yes
Enclosed: Yes
Contiguous: Yes
Permitted: Yes
Wet space: Yes
Addition: No
Conversion: No

**7604 Summerdawn Drive Southeast, Owens Cross Roads,
Madison County, Alabama, United States, 35763**

12 Floor 1 - Hall



Dimensions: 4'0" x 6'0"
Area: 24 sq. ft
Counted as living area: Yes

Heated: Yes
Finished: Yes
Enclosed: Yes
Contiguous: Yes
Permitted: Yes
Wet space: No
Addition: No
Conversion: No

13 Floor 1 - Hall



Dimensions: 11'4" x 3'5"
Area: 39 sq. ft
Counted as living area: Yes

Heated: Yes
Finished: Yes
Enclosed: Yes
Contiguous: Yes
Permitted: Yes
Wet space: No
Addition: No
Conversion: No

14 Floor 1 - Kitchen



Dimensions: 16'10" x 10'11"
Area: 185 sq. ft
Counted as living area: Yes

Heated: Yes
Finished: Yes
Enclosed: Yes
Contiguous: Yes
Permitted: Yes
Wet space: No
Addition: No
Conversion: No

**7604 Summerdawn Drive Southeast, Owens Cross Roads,
Madison County, Alabama, United States, 35763**

15 Floor 1 - Foyer



Dimensions: 6'9" x 11'4"
Area: 76 sq. ft
Counted as living area: Yes

Heated: Yes
Finished: Yes
Enclosed: Yes
Contiguous: Yes
Permitted: Yes
Wet space: No
Addition: No
Conversion: No

16 Floor 1 - W.I.C.



Dimensions: 9'9" x 3'5"
Area: 33 sq. ft
Counted as living area: Yes

Heated: Yes
Finished: Yes
Enclosed: Yes
Contiguous: Yes
Permitted: Yes
Wet space: No
Addition: No
Conversion: No

17 Floor 1 - Primary Bedroom

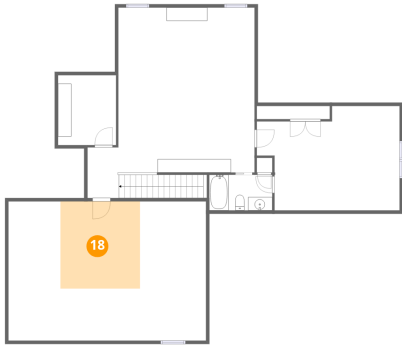


Dimensions: 21'4" x 13'1"
Area: 279 sq. ft
Counted as living area: Yes

Heated: Yes
Finished: Yes
Enclosed: Yes
Contiguous: Yes
Permitted: Yes
Wet space: No
Addition: No
Conversion: No

**7604 Summerdawn Drive Southeast, Owens Cross Roads,
Madison County, Alabama, United States, 35763**

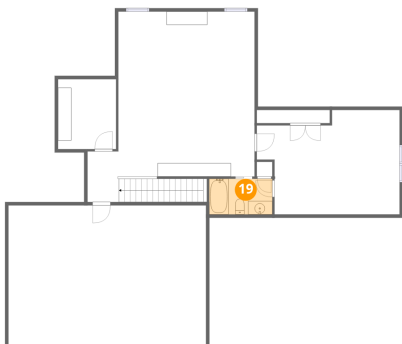
18 Floor 2 - Attic



Dimensions: 29'7" x 20'10"
Area: 615 sq. ft
Counted as living area: No

Heated: No
Finished: No
Enclosed: Yes
Contiguous: Yes
Permitted: Yes
Wet space: No
Addition: No
Conversion: No

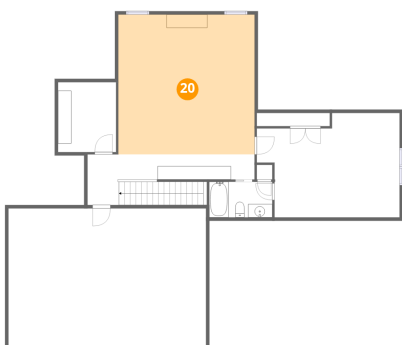
19 Floor 2 - Bath



Dimensions: 9'5" x 5'4"
Area: 50 sq. ft
Counted as living area: Yes

Heated: Yes
Finished: Yes
Enclosed: Yes
Contiguous: Yes
Permitted: Yes
Wet space: Yes
Addition: No
Conversion: No

20 Floor 2 - Family Room

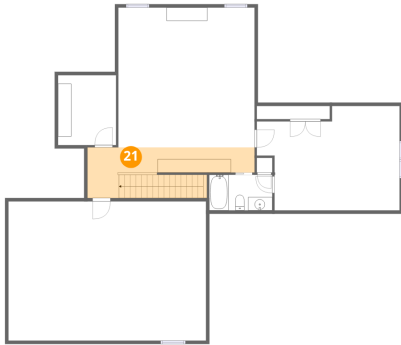


Dimensions: 20'4" x 20'10"
Area: 423 sq. ft
Counted as living area: Yes

Heated: Yes
Finished: Yes
Enclosed: Yes
Contiguous: Yes
Permitted: Yes
Wet space: No
Addition: No
Conversion: No

7604 Summerdawn Drive Southeast, Owens Cross Roads,
Madison County, Alabama, United States, 35763

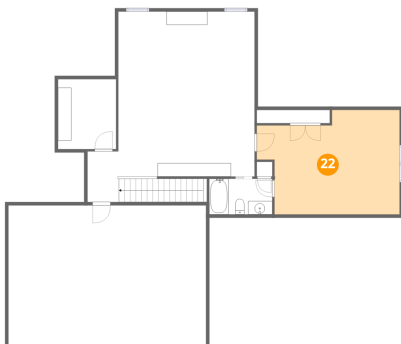
21 Floor 2 - Hall



Dimensions: 25'0" x 7'7"
Area: 189 sq. ft
Counted as living area: Yes

Heated: Yes
Finished: Yes
Enclosed: Yes
Contiguous: Yes
Permitted: Yes
Wet space: No
Addition: No
Conversion: No

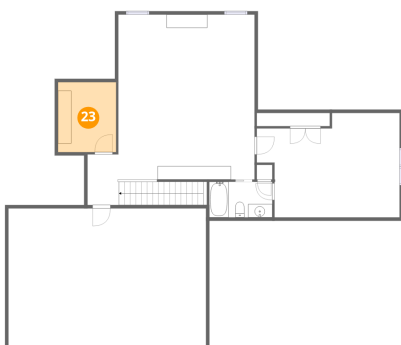
22 Floor 2 - Bedroom



Dimensions: 21'4" x 15'7"
Area: 333 sq. ft
Counted as living area: Yes

Heated: Yes
Finished: Yes
Enclosed: Yes
Contiguous: Yes
Permitted: Yes
Wet space: No
Addition: No
Conversion: No

23 Floor 2 - Office



Dimensions: 8'8" x 10'5"
Area: 91 sq. ft
Counted as living area: Yes

Heated: Yes
Finished: Yes
Enclosed: Yes
Contiguous: Yes
Permitted: Yes
Wet space: No
Addition: No
Conversion: No