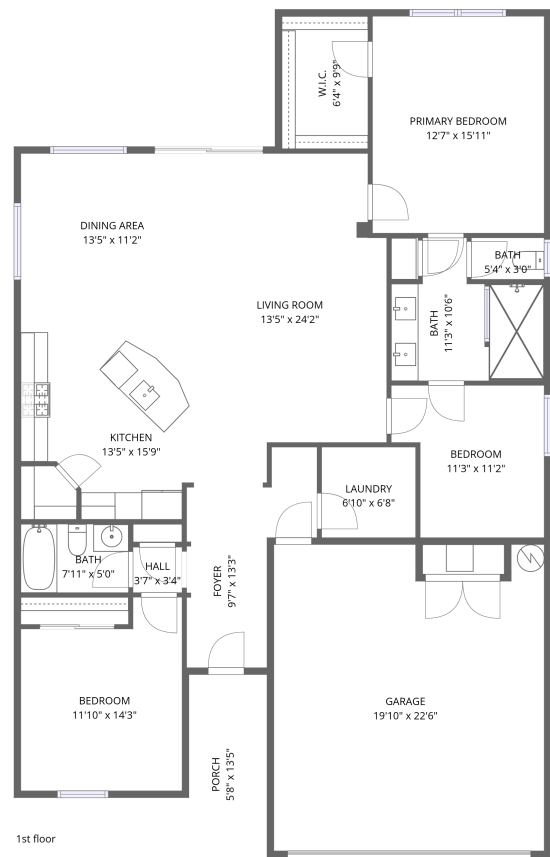


5219 Cappleman Loop, Brooksville, Hernando County, Florida,
United States, 34601



Total Area: 1557 sq. ft

1st Floor: 1557 sq. ft

Excluded: Garage 427 sq. ft, Undefined 13 sq. ft, Porch 77 sq. ft, Walls: 130 sq. ft

Property summary

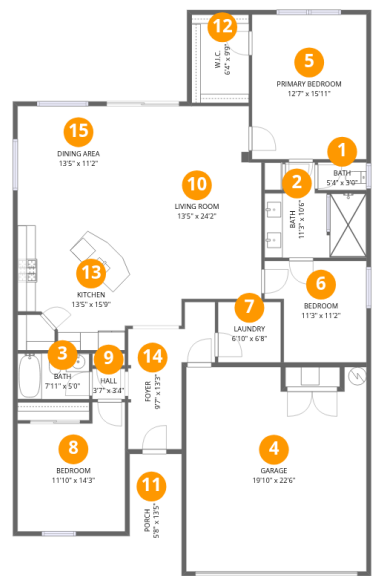
1 Floors

3 Bedrooms

2 Bathrooms

1 Garages

5219 Cappleman Loop, Brooksville, Hernando County, Florida,
United States, 34601



Room dimensions

Floor 1 Total:1557sqft Excluded: 517sqft

#		Dimensions	sqft	Counted as living area
1	Bath	5'4" x 3'0"	16 sq. ft	Yes
2	Bath	11'3" x 10'6"	89 sq. ft	Yes
3	Bath	7'11" x 5'0"	40 sq. ft	Yes
4	Garage	19'10" x 22'6"	427 sq. ft	No
5	Primary Bedroom	12'7" x 15'11"	201 sq. ft	Yes
6	Bedroom	11'3" x 11'2"	111 sq. ft	Yes
7	Laundry	6'10" x 6'8"	46 sq. ft	Yes
8	Bedroom	11'10" x 14'3"	149 sq. ft	Yes
9	Hall	3'7" x 3'4"	12 sq. ft	Yes
10	Living Room	13'5" x 24'2"	291 sq. ft	Yes
11	Porch	5'8" x 13'5"	77 sq. ft	No

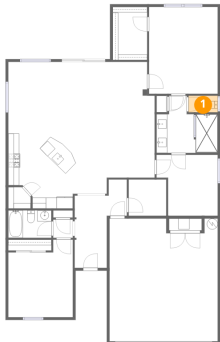
Home data report

5219 Cappleman Loop, Brooksville, Hernando County, Florida,
United States, 34601

#		Dimensions	sqft	Counted as living area
12	W.I.C.	6'4" x 9'9"	61 sq. ft	Yes
13	Kitchen	13'5" x 15'9"	190 sq. ft	Yes
14	Foyer	9'7" x 13'3"	102 sq. ft	Yes
15	Dining Area	13'5" x 11'2"	149 sq. ft	Yes

5219 Cappleman Loop, Brooksville, Hernando County, Florida,
United States, 34601

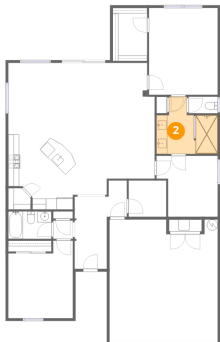
1 Floor 1 - Bath



Dimensions: 5'4" x 3'0"
Area: 16 sq. ft
Counted as living area: Yes

Heated: Yes
Finished: Yes
Enclosed: Yes
Contiguous: Yes
Permitted: Yes
Wet space: Yes
Addition: No
Conversion: No

2 Floor 1 - Bath

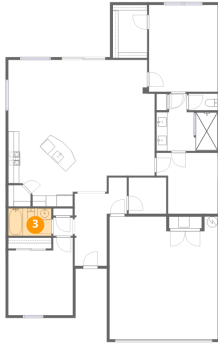


Dimensions: 11'3" x 10'6"
Area: 89 sq. ft
Counted as living area: Yes

Heated: Yes
Finished: Yes
Enclosed: Yes
Contiguous: Yes
Permitted: Yes
Wet space: Yes
Addition: No
Conversion: No

5219 Cappleman Loop, Brooksville, Hernando County, Florida,
United States, 34601

3 Floor 1 - Bath



Dimensions: 7'11" x 5'0"
Area: 40 sq. ft
Counted as living area: Yes

Heated: Yes
Finished: Yes
Enclosed: Yes
Contiguous: Yes
Permitted: Yes
Wet space: Yes
Addition: No
Conversion: No

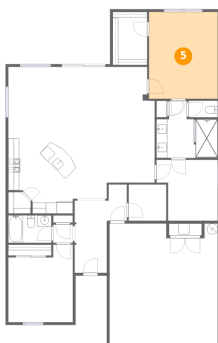
4 Floor 1 - Garage



Dimensions: 19'10" x 22'6"
Area: 427 sq. ft
Counted as living area: No

Heated: No
Finished: No
Enclosed: Yes
Contiguous: Yes
Permitted: Yes
Wet space: No
Addition: No
Conversion: No

5 Floor 1 - Primary Bedroom

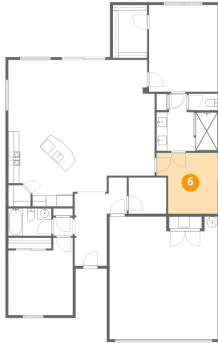


Dimensions: 12'7" x 15'11"
Area: 201 sq. ft
Counted as living area: Yes

Heated: Yes
Finished: Yes
Enclosed: Yes
Contiguous: Yes
Permitted: Yes
Wet space: No
Addition: No
Conversion: No

5219 Cappleman Loop, Brooksville, Hernando County, Florida,
United States, 34601

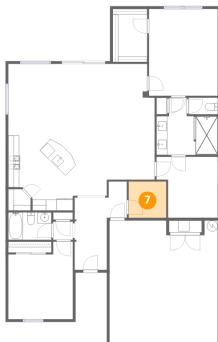
6 Floor 1 - Bedroom



Dimensions: 11'3" x 11'2"
Area: 111 sq. ft
Counted as living area: Yes

Heated: Yes
Finished: Yes
Enclosed: Yes
Contiguous: Yes
Permitted: Yes
Wet space: No
Addition: No
Conversion: No

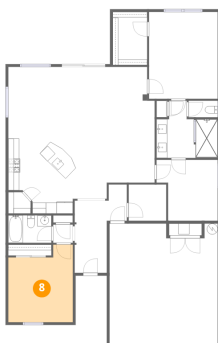
7 Floor 1 - Laundry



Dimensions: 6'10" x 6'8"
Area: 46 sq. ft
Counted as living area: Yes

Heated: Yes
Finished: Yes
Enclosed: Yes
Contiguous: Yes
Permitted: Yes
Wet space: No
Addition: No
Conversion: No

8 Floor 1 - Bedroom

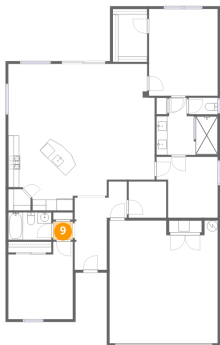


Dimensions: 11'10" x 14'3"
Area: 149 sq. ft
Counted as living area: Yes

Heated: Yes
Finished: Yes
Enclosed: Yes
Contiguous: Yes
Permitted: Yes
Wet space: No
Addition: No
Conversion: No

5219 Cappleman Loop, Brooksville, Hernando County, Florida,
United States, 34601

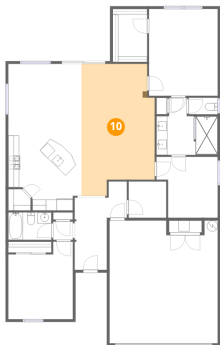
9 Floor 1 - Hall



Dimensions: 3'7" x 3'4"
Area: 12 sq. ft
Counted as living area: Yes

Heated: Yes
Finished: Yes
Enclosed: Yes
Contiguous: Yes
Permitted: Yes
Wet space: No
Addition: No
Conversion: No

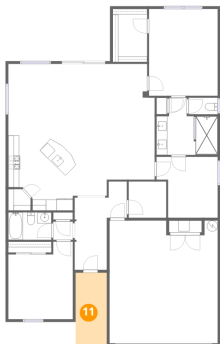
10 Floor 1 - Living Room



Dimensions: 13'5" x 24'2"
Area: 291 sq. ft
Counted as living area: Yes

Heated: Yes
Finished: Yes
Enclosed: Yes
Contiguous: Yes
Permitted: Yes
Wet space: No
Addition: No
Conversion: No

11 Floor 1 - Porch

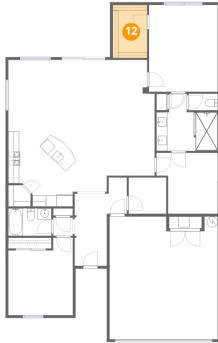


Dimensions: 5'8" x 13'5"
Area: 77 sq. ft
Counted as living area: No

Heated: No
Finished: No
Enclosed: No
Contiguous: Yes
Permitted: Yes
Wet space: No
Addition: No
Conversion: No

5219 Cappleman Loop, Brooksville, Hernando County, Florida,
United States, 34601

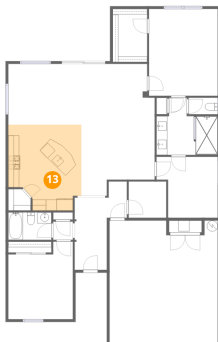
12 Floor 1 - W.I.C.



Dimensions: 6'4" x 9'9"
Area: 61 sq. ft
Counted as living area: Yes

Heated: Yes
Finished: Yes
Enclosed: Yes
Contiguous: Yes
Permitted: Yes
Wet space: No
Addition: No
Conversion: No

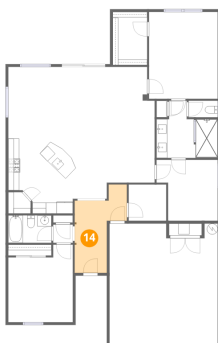
13 Floor 1 - Kitchen



Dimensions: 13'5" x 15'9"
Area: 190 sq. ft
Counted as living area: Yes

Heated: Yes
Finished: Yes
Enclosed: Yes
Contiguous: Yes
Permitted: Yes
Wet space: No
Addition: No
Conversion: No

14 Floor 1 - Foyer

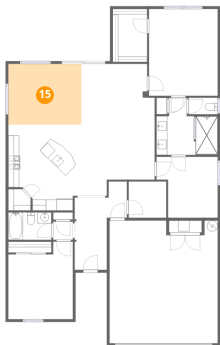


Dimensions: 9'7" x 13'3"
Area: 102 sq. ft
Counted as living area: Yes

Heated: Yes
Finished: Yes
Enclosed: Yes
Contiguous: Yes
Permitted: Yes
Wet space: No
Addition: No
Conversion: No

5219 Cappleman Loop, Brooksville, Hernando County, Florida,
United States, 34601

15 Floor 1 - Dining Area



Dimensions: 13'5" x 11'2"
Area: 149 sq. ft
Counted as living area: Yes

Heated: Yes
Finished: Yes
Enclosed: Yes
Contiguous: Yes
Permitted: Yes
Wet space: No
Addition: No
Conversion: No