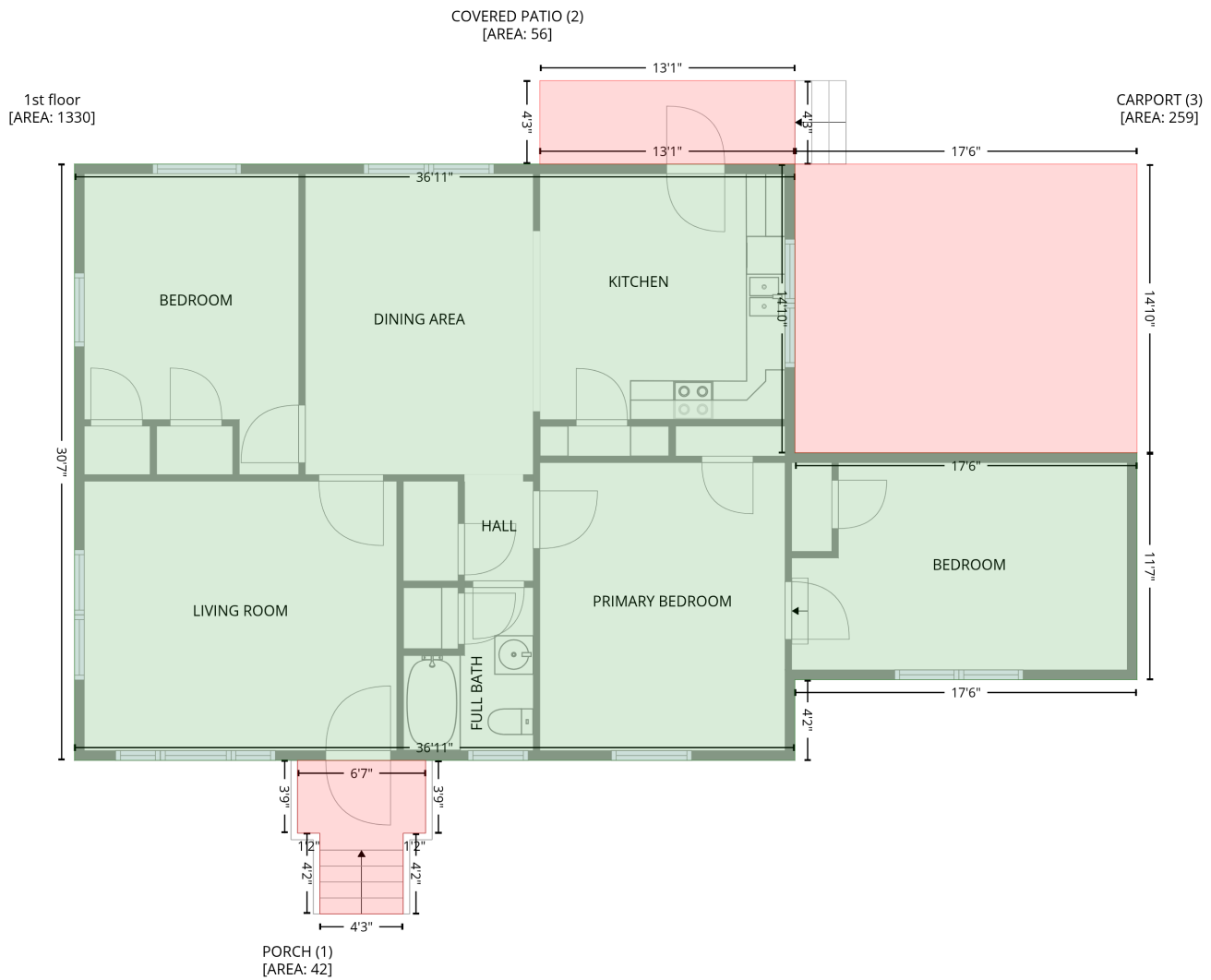


# 1514 North Franklin Street, Gastonia, North Carolina 28054, United States

Gross Living Area: 1330 sq. ft

## Level 1



Space	Area (sq. ft)	Calculation <small>Coordinate Polygon Area Algorithm using inches</small>
1st floor (Living area)	1330	$-((422.4 + 422.4) * (269.6 - 447.2) + (422.4 + 632.7) * (447.2 - 447.2) + (632.7 + 632.7) * (447.2 - 586.6) + (632.7 + 422.4) * (586.6 - 586.6) + (422.4 + 422.4) * (586.6 - 636.2) + (422.4 + -20.2) * (636.2 - 636.2) + (-20.2 + -20.2) * (636.2 - 269.6) + (-20.2 + 422.4) * (269.6 - 269.6)) * 0.5 * 0.00694$
PORCH (Non-living area)	42	$-((195.6 + 195.6) * (636.2 - 681) + (195.6 + 181.8) * (681 - 681) + (181.8 + 181.8) * (681 - 730.6) + (181.8 + 130.6) * (730.6 - 730.6) + (130.6 + 130.6) * (730.6 - 681) + (130.6 + 116.8) * (681 - 681) + (116.8 + 116.8) * (681 - 636.2) + (116.8 + 195.6) * (636.2 - 636.2)) * 0.5 * 0.00694$
COVERED PATIO (Non-living area)	56	$-((422.4 + 422.4) * (218.4 - 269.6) + (422.4 + 265.7) * (269.6 - 269.6) + (265.7 + 265.7) * (269.6 - 218.4) + (265.7 + 422.4) * (218.4 - 218.4)) * 0.5 * 0.00694$
CARPORT (Non-living area)	259	$-((632.7 + 632.7) * (269.6 - 447.2) + (632.7 + 422.4) * (447.2 - 447.2) + (422.4 + 422.4) * (447.2 - 269.6) + (422.4 + 632.7) * (269.6 - 269.6)) * 0.5 * 0.00694$