

# 496 Settlers Ridge, Peterborough, ON, CA



**Total Area: 1783 sq. ft**

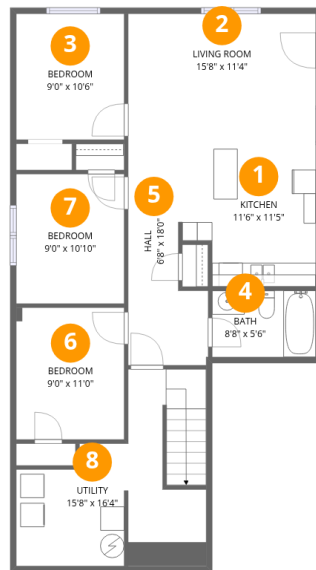
Basement: 803 sq. ft, 1st Floor: 980 sq. ft

Excluded: Utility 178 sq. ft, Garage 177 sq. ft, Deck 201 sq. ft, Walls: 157 sq. ft

## Property summary



# 496 Settlers Ridge, Peterborough, ON, CA



## Room dimensions

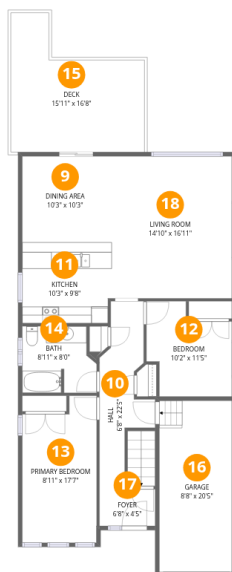
Floor 1 Below grade

Total:803sqft

Excluded: 178sqft

#		Dimensions	sqft	Counted as living area
1	Kitchen	11'6" x 11'5"	120 sq. ft	Yes
2	Living Room	15'8" x 11'4"	178 sq. ft	Yes
3	Bedroom	9'0" x 10'6"	95 sq. ft	Yes
4	Bath	8'8" x 5'6"	48 sq. ft	Yes
5	Hall	6'8" x 18'0"	91 sq. ft	Yes
6	Bedroom	9'0" x 11'0"	99 sq. ft	Yes
7	Bedroom	9'0" x 10'10"	98 sq. ft	Yes
8	Utility	15'8" x 16'4"	173 sq. ft	No

# 496 Settlers Ridge, Peterborough, ON, CA



## Room dimensions

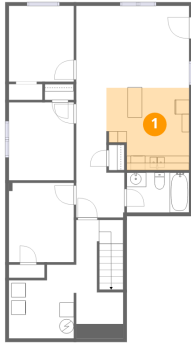
Floor 2

Total:980sqft

Excluded: 378sqft

#		Dimensions	sqft	Counted as living area
9	Dining Area	10'3" x 10'3"	105 sq. ft	Yes
10	Hall	6'8" x 22'5"	94 sq. ft	Yes
11	Kitchen	10'3" x 9'8"	99 sq. ft	Yes
12	Bedroom	10'2" x 11'5"	96 sq. ft	Yes
13	Primary Bedroom	8'11" x 17'7"	144 sq. ft	Yes
14	Bath	8'11" x 8'0"	65 sq. ft	Yes
15	Deck	15'11" x 16'8"	201 sq. ft	No
16	Garage	8'8" x 20'5"	177 sq. ft	No
17	Foyer	6'8" x 4'5"	29 sq. ft	Yes
18	Living Room	14'10" x 16'11"	251 sq. ft	Yes

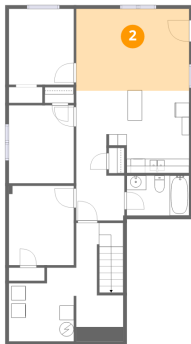
## 1 Floor 1 - Kitchen



Dimensions: 11'6" x 11'5"  
Area: 120 sq. ft  
Counted as living area: Yes

Heated: Yes  
Finished: Yes  
Enclosed: Yes  
Contiguous: Yes  
Permitted: Yes  
Wet space: No  
Addition: No  
Conversion: No

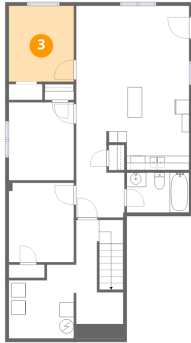
## 2 Floor 1 - Living Room



Dimensions: 15'8" x 11'4"  
Area: 178 sq. ft  
Counted as living area: Yes

Heated: Yes  
Finished: Yes  
Enclosed: Yes  
Contiguous: Yes  
Permitted: Yes  
Wet space: No  
Addition: No  
Conversion: No

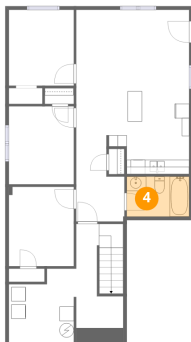
### 3 Floor 1 - Bedroom



Dimensions: 9'0" x 10'6"  
Area: 95 sq. ft  
Counted as living area: Yes

Heated: Yes  
Finished: Yes  
Enclosed: Yes  
Contiguous: Yes  
Permitted: Yes  
Wet space: No  
Addition: No  
Conversion: No

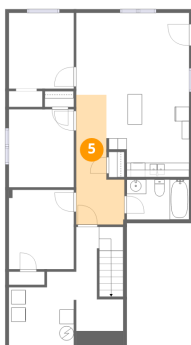
### 4 Floor 1 - Bath



Dimensions: 8'8" x 5'6"  
Area: 48 sq. ft  
Counted as living area: Yes

Heated: Yes  
Finished: Yes  
Enclosed: Yes  
Contiguous: Yes  
Permitted: Yes  
Wet space: Yes  
Addition: No  
Conversion: No

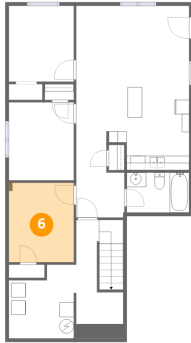
### 5 Floor 1 - Hall



Dimensions: 6'8" x 18'0"  
Area: 91 sq. ft  
Counted as living area: Yes

Heated: Yes  
Finished: Yes  
Enclosed: Yes  
Contiguous: Yes  
Permitted: Yes  
Wet space: No  
Addition: No  
Conversion: No

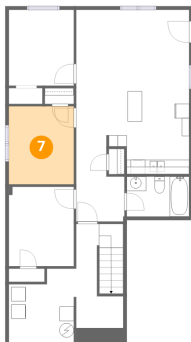
### 6 Floor 1 - Bedroom



Dimensions: 9'0" x 11'0"  
Area: 99 sq. ft  
Counted as living area: Yes

Heated: Yes  
Finished: Yes  
Enclosed: Yes  
Contiguous: Yes  
Permitted: Yes  
Wet space: No  
Addition: No  
Conversion: No

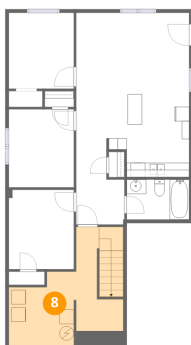
### 7 Floor 1 - Bedroom



Dimensions: 9'0" x 10'10"  
Area: 98 sq. ft  
Counted as living area: Yes

Heated: Yes  
Finished: Yes  
Enclosed: Yes  
Contiguous: Yes  
Permitted: Yes  
Wet space: No  
Addition: No  
Conversion: No

### 8 Floor 1 - Utility



Dimensions: 15'8" x 16'4"  
Area: 173 sq. ft  
Counted as living area: No

Heated: Yes  
Finished: No  
Enclosed: Yes  
Contiguous: Yes  
Permitted: Yes  
Wet space: No  
Addition: No  
Conversion: No

## 9 Floor 2 - Dining Area



Dimensions: 10'3" x 10'3"  
Area: 105 sq. ft  
Counted as living area: Yes

Heated: Yes  
Finished: Yes  
Enclosed: Yes  
Contiguous: Yes  
Permitted: Yes  
Wet space: No  
Addition: No  
Conversion: No

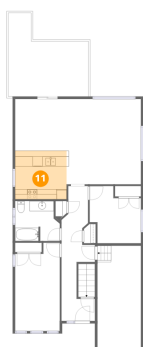
## 10 Floor 2 - Hall



Dimensions: 6'8" x 22'5"  
Area: 94 sq. ft  
Counted as living area: Yes

Heated: Yes  
Finished: Yes  
Enclosed: Yes  
Contiguous: Yes  
Permitted: Yes  
Wet space: No  
Addition: No  
Conversion: No

## 11 Floor 2 - Kitchen



Dimensions: 10'3" x 9'8"  
Area: 99 sq. ft  
Counted as living area: Yes

Heated: Yes  
Finished: Yes  
Enclosed: Yes  
Contiguous: Yes  
Permitted: Yes  
Wet space: No  
Addition: No  
Conversion: No

## 12 Floor 2 - Bedroom



Dimensions: 10'2" x 11'5"  
Area: 96 sq. ft  
Counted as living area: Yes

Heated: Yes  
Finished: Yes  
Enclosed: Yes  
Contiguous: Yes  
Permitted: Yes  
Wet space: No  
Addition: No  
Conversion: No

## 13 Floor 2 - Primary Bedroom



Dimensions: 8'11" x 17'7"  
Area: 144 sq. ft  
Counted as living area: Yes

Heated: Yes  
Finished: Yes  
Enclosed: Yes  
Contiguous: Yes  
Permitted: Yes  
Wet space: No  
Addition: No  
Conversion: No

## 14 Floor 2 - Bath



Dimensions: 8'11" x 8'0"  
Area: 65 sq. ft  
Counted as living area: Yes

Heated: Yes  
Finished: Yes  
Enclosed: Yes  
Contiguous: Yes  
Permitted: Yes  
Wet space: Yes  
Addition: No  
Conversion: No

**15** Floor 2 - Deck



Dimensions: 15'11" x 16'8"  
Area: 201 sq. ft  
Counted as living area: No

Heated: No  
Finished: No  
Enclosed: No  
Contiguous: Yes  
Permitted: Yes  
Wet space: No  
Addition: No  
Conversion: No

**16** Floor 2 - Garage



Dimensions: 8'8" x 20'5"  
Area: 177 sq. ft  
Counted as living area: No

Heated: No  
Finished: No  
Enclosed: Yes  
Contiguous: Yes  
Permitted: Yes  
Wet space: No  
Addition: No  
Conversion: No

**17** Floor 2 - Foyer



Dimensions: 6'8" x 4'5"  
Area: 29 sq. ft  
Counted as living area: Yes

Heated: Yes  
Finished: Yes  
Enclosed: Yes  
Contiguous: Yes  
Permitted: Yes  
Wet space: No  
Addition: No  
Conversion: No

**18** Floor 2 - Living Room

---



**Dimensions:** 14'10" x 16'11"  
**Area:** 251 sq. ft  
**Counted as living area:** Yes

**Heated:** Yes  
**Finished:** Yes  
**Enclosed:** Yes  
**Contiguous:** Yes  
**Permitted:** Yes  
**Wet space:** No  
**Addition:** No  
**Conversion:** No