

Home data report

7B Statesboro Dr, Belle Fourche, SD, US




Total Area: 1190 sq. ft

1st Floor: 686 sq. ft, 2nd Floor: 504 sq. ft

Excluded: Garage 283 sq. ft, Walls: 121 sq. ft

Property summary

 **2** Floors

 **2** Bedrooms

 **1** Bathrooms

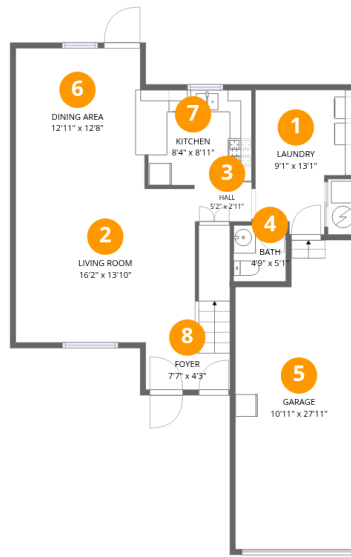
Home data report

7B Statesboro Dr, Belle Fourche, SD, US

 **1**
Half baths

 **1**
Garages

7B Statesboro Dr, Belle Fourche, SD, US



Room dimensions

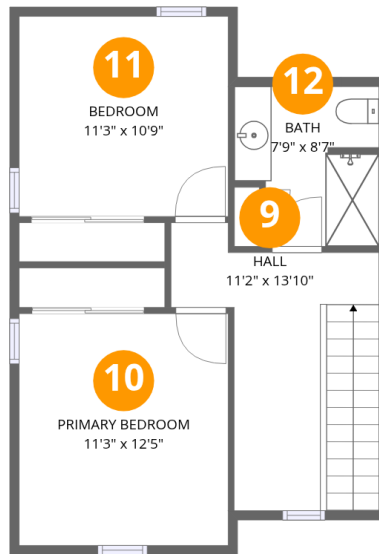
Floor 1

Total: 686sqft

Excluded: 283sqft

#		Dimensions	sqft	Counted as living area
1	Laundry	9'1" x 13'1"	100 sq. ft	Yes
2	Living Room	16'2" x 13'10"	256 sq. ft	Yes
3	Hall	5'2" x 2'11"	15 sq. ft	Yes
4	Bath	4'9" x 5'1"	24 sq. ft	Yes
5	Garage	10'11" x 27'11"	283 sq. ft	No
6	Dining Area	12'11" x 12'8"	157 sq. ft	Yes
7	Kitchen	8'4" x 8'11"	74 sq. ft	Yes
8	Foyer	7'7" x 4'3"	32 sq. ft	Yes

7B Statesboro Dr, Belle Fourche, SD, US



Room dimensions

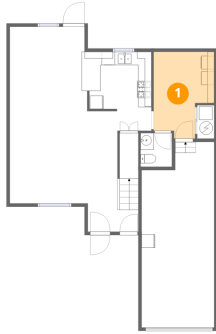
Floor 2

Total:504sqft

Excluded: 0sqft

#		Dimensions	sqft	Counted as living area
9	Hall	11'2" x 13'10"	123 sq. ft	Yes
10	Primary Bedroom	11'3" x 12'5"	140 sq. ft	Yes
11	Bedroom	11'3" x 10'9"	121 sq. ft	Yes
12	Bath	7'9" x 8'7"	60 sq. ft	Yes

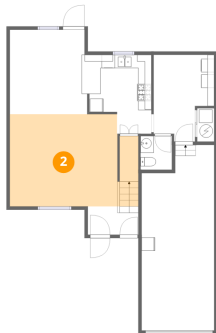
1 Floor 1 - Laundry



Dimensions: 9'1" x 13'1"
Area: 100 sq. ft
Counted as living area: Yes

Heated: Yes
Finished: Yes
Enclosed: Yes
Contiguous: Yes
Permitted: Yes
Wet space: No
Addition: No
Conversion: No

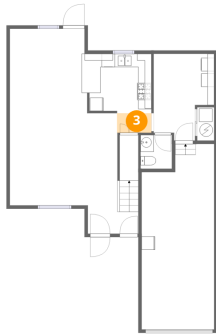
2 Floor 1 - Living Room



Dimensions: 16'2" x 13'10"
Area: 256 sq. ft
Counted as living area: Yes

Heated: Yes
Finished: Yes
Enclosed: Yes
Contiguous: Yes
Permitted: Yes
Wet space: No
Addition: No
Conversion: No

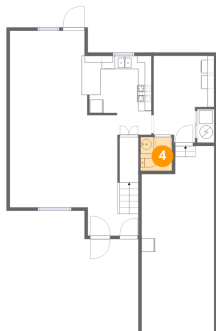
3 Floor 1 - Hall



Dimensions: 5'2" x 2'11"
Area: 15 sq. ft
Counted as living area: Yes

Heated: Yes
Finished: Yes
Enclosed: Yes
Contiguous: Yes
Permitted: Yes
Wet space: No
Addition: No
Conversion: No

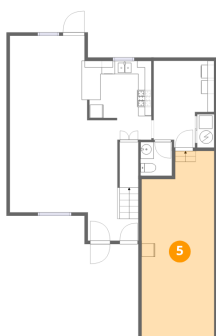
4 Floor 1 - Bath



Dimensions: 4'9" x 5'1"
Area: 24 sq. ft
Counted as living area: Yes

Heated: Yes
Finished: Yes
Enclosed: Yes
Contiguous: Yes
Permitted: Yes
Wet space: Yes
Addition: No
Conversion: No

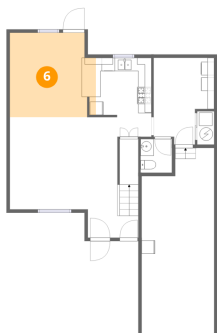
5 Floor 1 - Garage



Dimensions: 10'11" x 27'11"
Area: 283 sq. ft
Counted as living area: No

Heated: No
Finished: No
Enclosed: Yes
Contiguous: Yes
Permitted: Yes
Wet space: No
Addition: No
Conversion: No

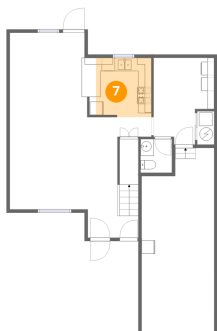
6 Floor 1 - Dining Area



Dimensions: 12'11" x 12'8"
Area: 157 sq. ft
Counted as living area: Yes

Heated: Yes
Finished: Yes
Enclosed: Yes
Contiguous: Yes
Permitted: Yes
Wet space: No
Addition: No
Conversion: No

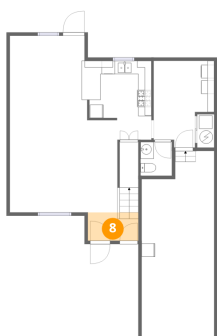
7 Floor 1 - Kitchen



Dimensions: 8'4" x 8'11"
Area: 74 sq. ft
Counted as living area: Yes

Heated: Yes
Finished: Yes
Enclosed: Yes
Contiguous: Yes
Permitted: Yes
Wet space: No
Addition: No
Conversion: No

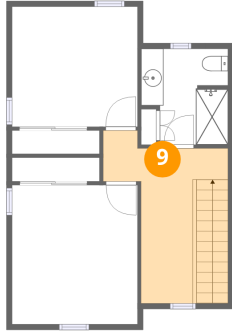
8 Floor 1 - Foyer



Dimensions: 7'7" x 4'3"
Area: 32 sq. ft
Counted as living area: Yes

Heated: Yes
Finished: Yes
Enclosed: Yes
Contiguous: Yes
Permitted: Yes
Wet space: No
Addition: No
Conversion: No

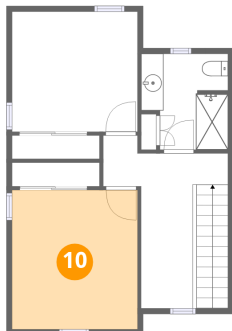
9 Floor 2 - Hall



Dimensions: 11'2" x 13'10"
Area: 123 sq. ft
Counted as living area: Yes

Heated: Yes
Finished: Yes
Enclosed: Yes
Contiguous: Yes
Permitted: Yes
Wet space: No
Addition: No
Conversion: No

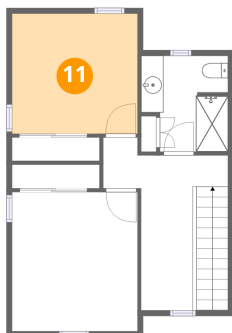
10 Floor 2 - Primary Bedroom



Dimensions: 11'3" x 12'5"
Area: 140 sq. ft
Counted as living area: Yes

Heated: Yes
Finished: Yes
Enclosed: Yes
Contiguous: Yes
Permitted: Yes
Wet space: No
Addition: No
Conversion: No

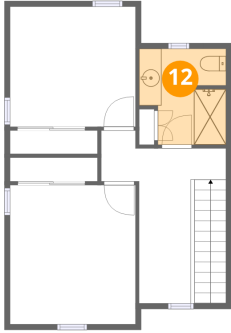
11 Floor 2 - Bedroom



Dimensions: 11'3" x 10'9"
Area: 121 sq. ft
Counted as living area: Yes

Heated: Yes
Finished: Yes
Enclosed: Yes
Contiguous: Yes
Permitted: Yes
Wet space: No
Addition: No
Conversion: No

12 Floor 2 - Bath



Dimensions: 7'9" x 8'7"
Area: 60 sq. ft
Counted as living area: Yes

Heated: Yes
Finished: Yes
Enclosed: Yes
Contiguous: Yes
Permitted: Yes
Wet space: Yes
Addition: No
Conversion: No