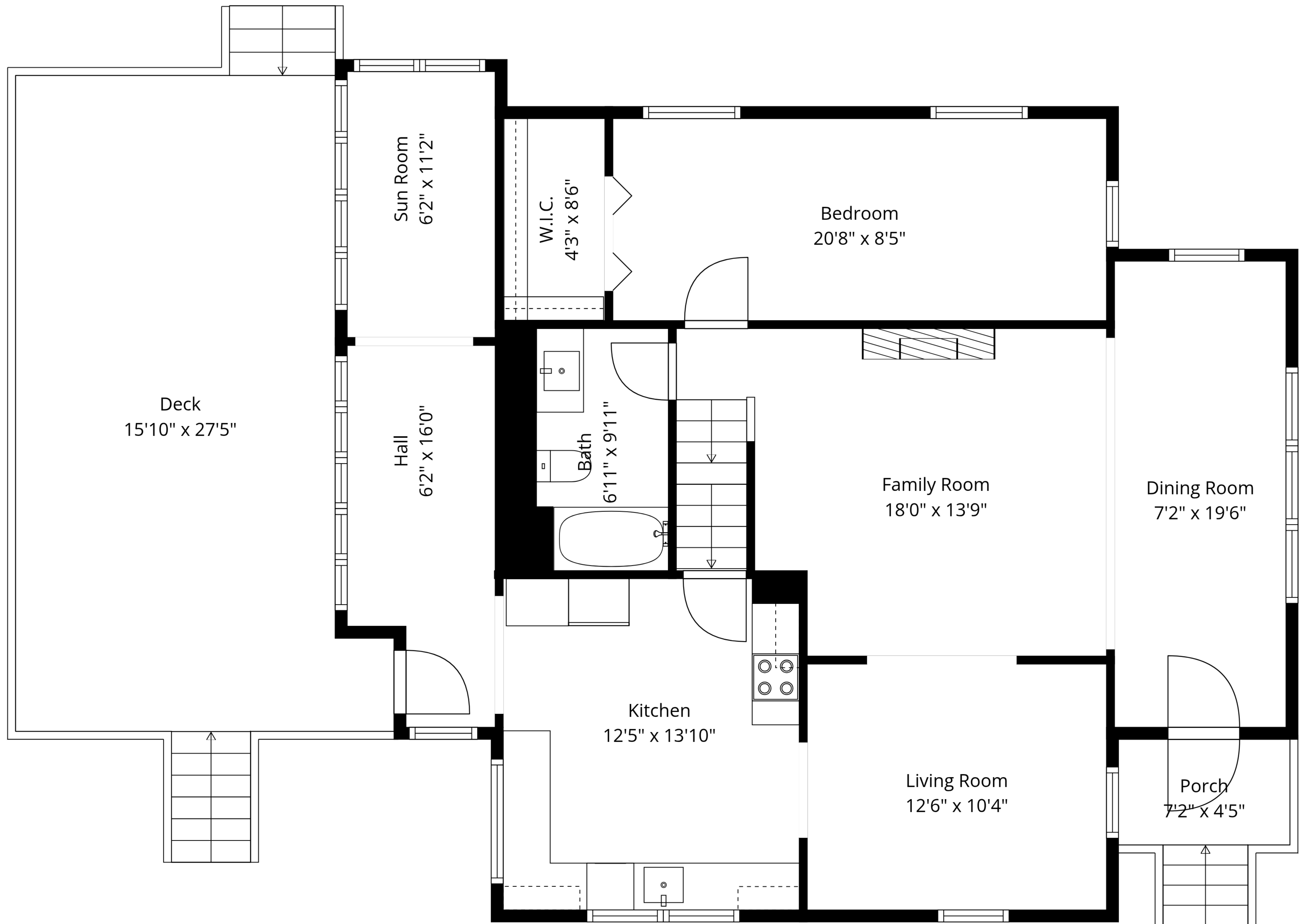


TOTAL: 1868 sq. ft

Basement: 419 sq. ft, 1st floor: 1151 sq. ft, 2nd floor: 298 sq. ft
EXCLUDED AREAS: BASEMENT: 456 sq. ft, PORCH: 44 sq. ft, DECK: 408 sq. ft,
LOW CEILING: 86 sq. ft, ATTIC: 189 sq. ft, WALLS: 196 sq. ft

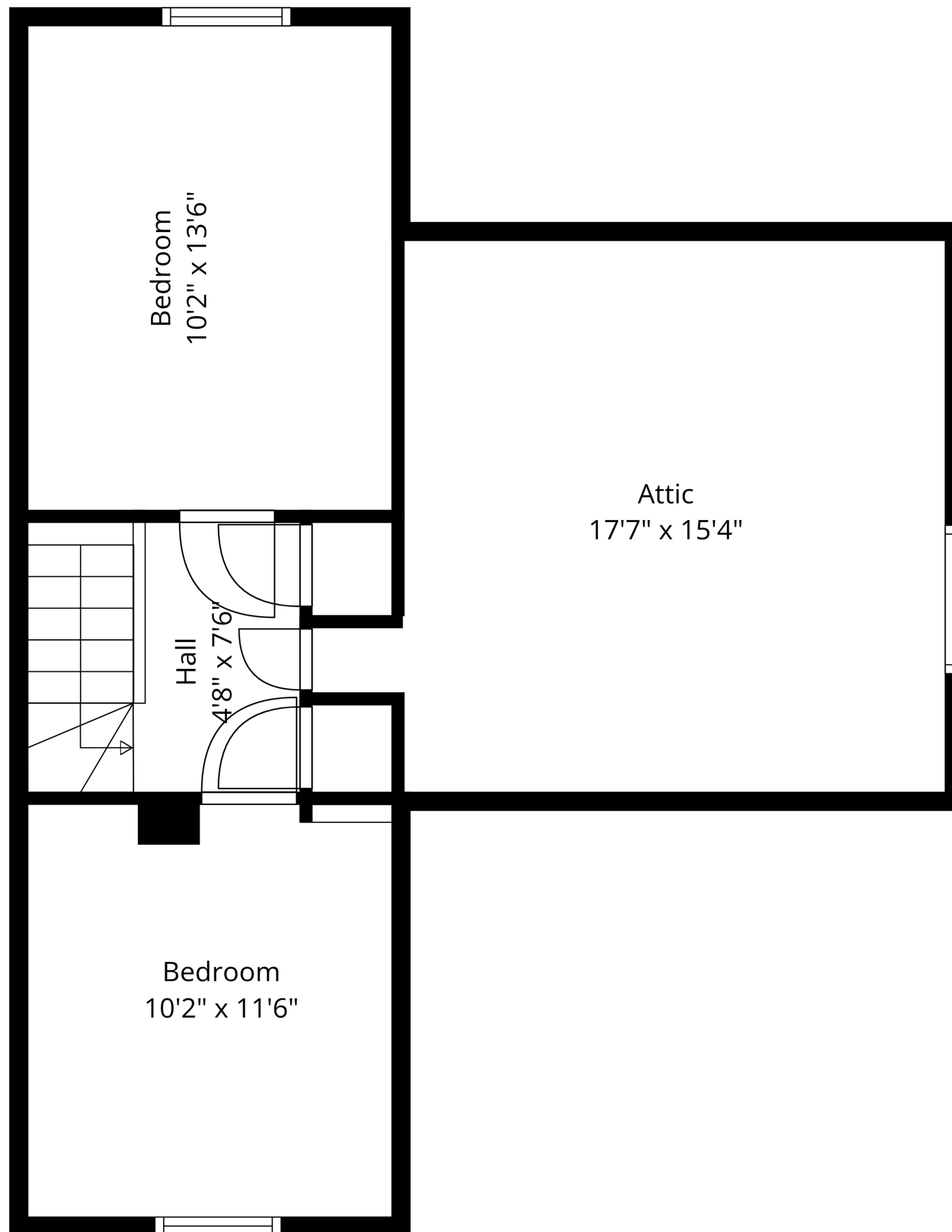
Measurements Are Approximate - Deemed Highly Reliable But Not Guaranteed



TOTAL: 1868 sq. ft

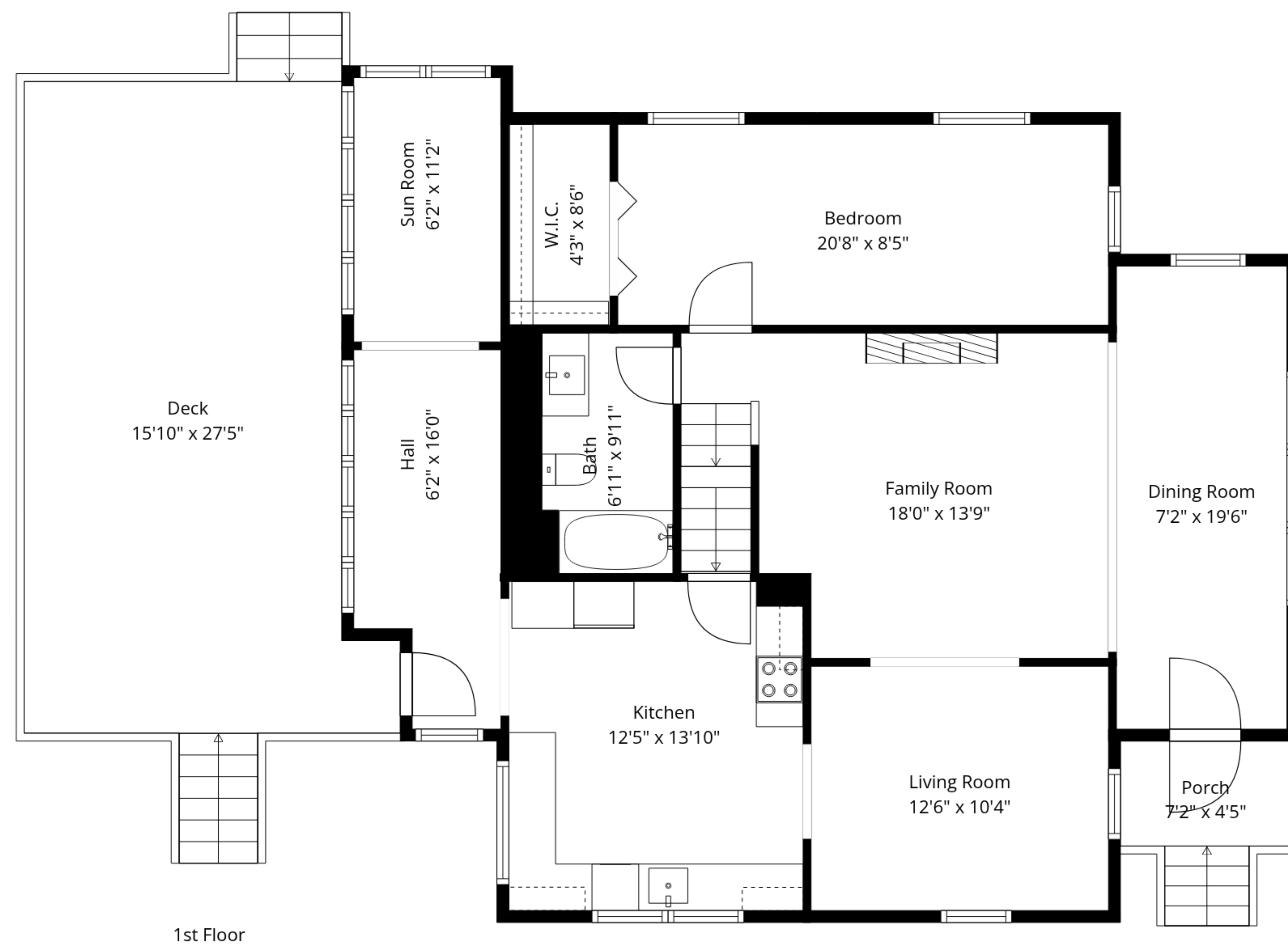
Basement: 419 sq. ft, 1st floor: 1151 sq. ft, 2nd floor: 298 sq. ft

EXCLUDED AREAS: BASEMENT: 456 sq. ft, PORCH: 44 sq. ft, DECK: 408 sq. ft,
 LOW CEILING: 86 sq. ft, ATTIC: 189 sq. ft, WALLS: 196 sq. ft

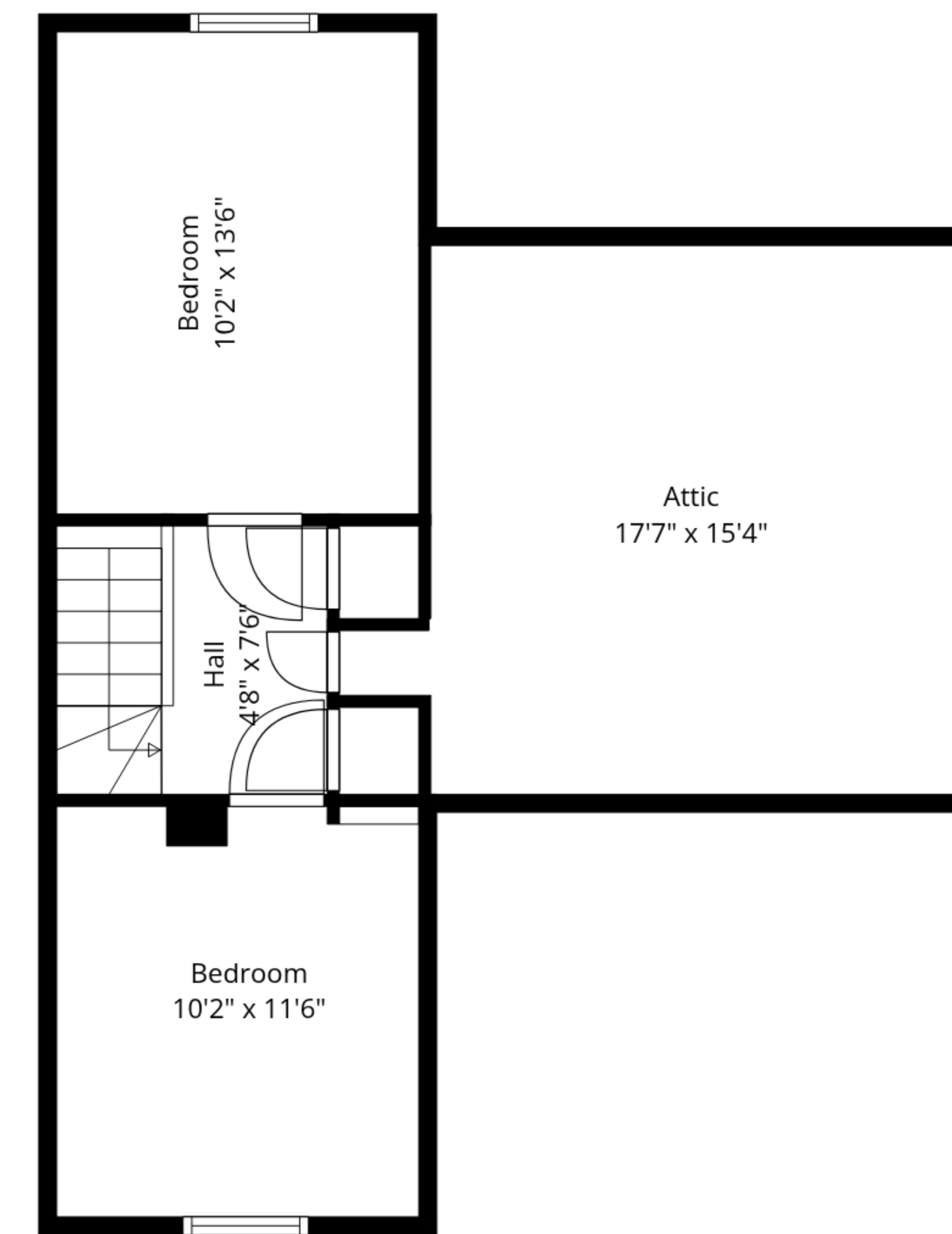


TOTAL: 1868 sq. ft

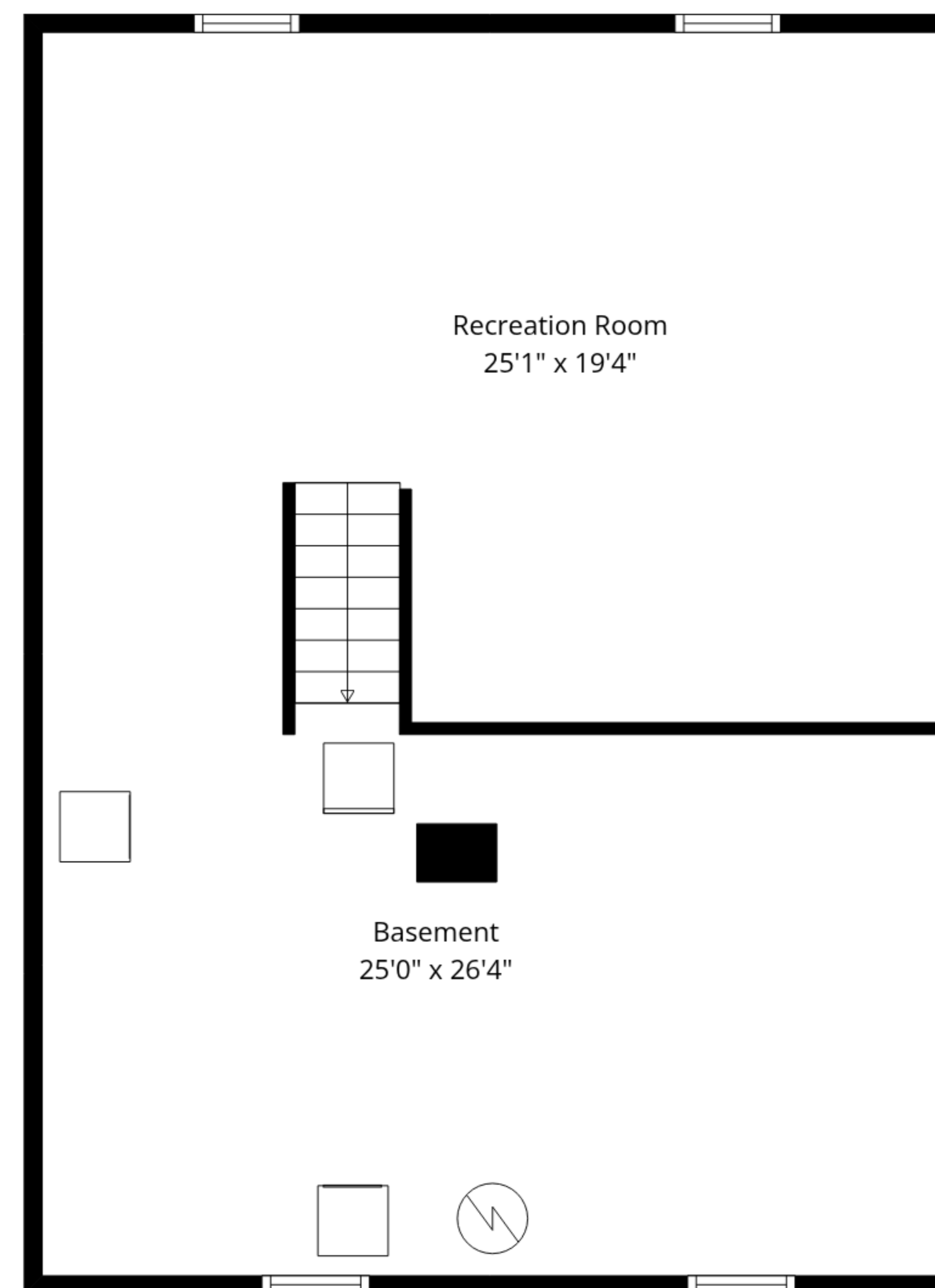
Basement: 419 sq. ft, 1st floor: 1151 sq. ft, 2nd floor: 298 sq. ft
EXCLUDED AREAS: BASEMENT: 456 sq. ft, PORCH: 44 sq. ft, DECK: 408 sq. ft,
LOW CEILING: 86 sq. ft, ATTIC: 189 sq. ft, WALLS: 196 sq. ft



1st Floor



2nd Floor



Basement

TOTAL: 1868 sq. ft

Basement: 419 sq. ft, 1st floor: 1151 sq. ft, 2nd floor: 298 sq. ft

EXCLUDED AREAS: BASEMENT: 456 sq. ft, PORCH: 44 sq. ft, DECK: 408 sq. ft,
LOW CEILING: 86 sq. ft, ATTIC: 189 sq. ft, WALLS: 196 sq. ft