

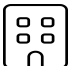
Home data report


3387 Kelly Lane, Roanoke, Virginia 24018, United States




Total Area: 1530 sq. ft
Basement 1: 385 sq. ft, 1st Floor: 574 sq. ft, 2nd Floor: 571 sq. ft
Excluded: Storage 79 sq. ft, Utility 108 sq. ft, Deck 298 sq. ft, Porch 165 sq. ft, Fireplace 12 sq. ft, Balcony 148 sq. ft, Walls: 153 sq. ft

Property summary

 **3** Floors

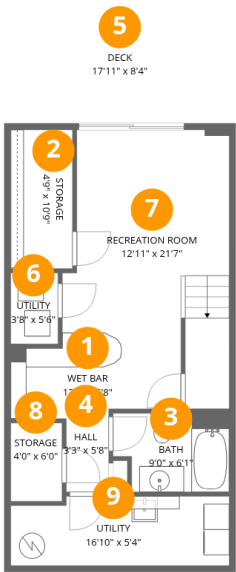
 **2** Bedrooms

 **2** Bathrooms

 **1** Half baths

Home data report

3387 Kelly Lane, Roanoke, Virginia 24018, United States



Room dimensions

Floor 1 Below grade Total:385sqft Excluded: 337sqft

#		Dimensions	sqft	Counted as living area
1	Wet Bar	13'2" x 6'8"	88 sq. ft	Yes
2	Storage	4'9" x 10'9"	51 sq. ft	No
3	Bath	9'0" x 6'1"	55 sq. ft	Yes
4	Hall	3'3" x 5'8"	19 sq. ft	Yes
5	Deck	17'11" x 8'4"	149 sq. ft	No
6	Utility	3'8" x 5'6"	20 sq. ft	No
7	Recreation Room	12'11" x 21'7"	279 sq. ft	Yes
8	Storage	4'0" x 6'0"	24 sq. ft	No
9	Utility	16'10" x 5'4"	91 sq. ft	No

Home data report

3387 Kelly Lane, Roanoke, Virginia 24018, United States



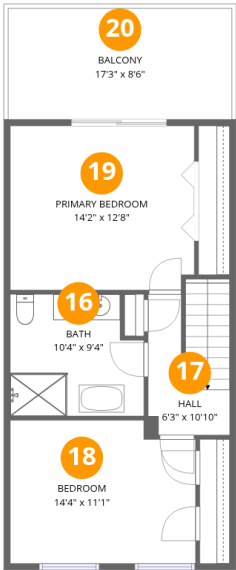
Room dimensions

Floor 2 Total:574sqft Excluded: 325sqft

#		Dimensions	sqft	Counted as living area
10	Dining Area	13'2" x 9'10"	130 sq. ft	Yes
11	Porch	11'2" x 19'7"	218 sq. ft	No
12	Kitchen	14'2" x 13'5"	190 sq. ft	Yes
13	Deck	17'3" x 8'7"	148 sq. ft	No
14	Bath	3'5" x 6'7"	22 sq. ft	Yes
15	Living Room	16'7" x 22'11"	380 sq. ft	Yes

Home data report

3387 Kelly Lane, Roanoke, Virginia 24018, United States



Room dimensions

Floor 3

Total:571sqft Excluded: 148sqft

#		Dimensions	sqft	Counted as living area
16	Bath	10'4" x 9'4"	96 sq. ft	Yes
17	Hall	6'3" x 10'10"	68 sq. ft	Yes
18	Bedroom	14'4" x 11'1"	158 sq. ft	Yes
19	Primary Bedroom	14'2" x 12'8"	179 sq. ft	Yes
20	Balcony	17'3" x 8'6"	147 sq. ft	No

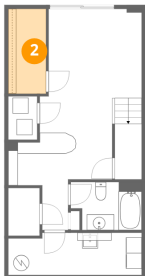
1 Floor 1 - Wet Bar



Dimensions: 13'2" x 6'8"
Area: 88 sq. ft
Counted as living area: Yes

Heated: Yes
Finished: Yes
Enclosed: Yes
Contiguous: Yes
Permitted: Yes
Wet space: No
Addition: No
Conversion: No

2 Floor 1 - Storage



Dimensions: 4'9" x 10'9"
Area: 51 sq. ft
Counted as living area: No

Heated: No
Finished: No
Enclosed: No
Contiguous: Yes
Permitted: Yes
Wet space: No
Addition: No
Conversion: No

3 Floor 1 - Bath



Dimensions: 9'0" x 6'1"
Area: 55 sq. ft
Counted as living area: Yes

Heated: Yes
Finished: Yes
Enclosed: Yes
Contiguous: Yes
Permitted: Yes
Wet space: Yes
Addition: No
Conversion: No

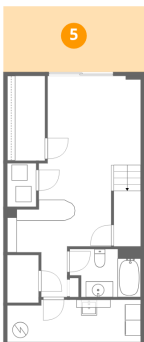
4 Floor 1 - Hall



Dimensions: 3'3" x 5'8"
Area: 19 sq. ft
Counted as living area: Yes

Heated: Yes
Finished: Yes
Enclosed: Yes
Contiguous: Yes
Permitted: Yes
Wet space: No
Addition: No
Conversion: No

5 Floor 1 - Deck



Dimensions: 17'11" x 8'4"
Area: 149 sq. ft
Counted as living area: No

Heated: No
Finished: No
Enclosed: No
Contiguous: Yes
Permitted: Yes
Wet space: No
Addition: No
Conversion: No

6 Floor 1 - Utility



Dimensions: 3'8" x 5'6"
Area: 20 sq. ft
Counted as living area: No

Heated: Yes
Finished: No
Enclosed: Yes
Contiguous: Yes
Permitted: Yes
Wet space: No
Addition: No
Conversion: No

7 Floor 1 - Recreation Room



Dimensions: 12'11" x 21'7"
Area: 279 sq. ft
Counted as living area: Yes

Heated: Yes
Finished: Yes
Enclosed: Yes
Contiguous: Yes
Permitted: Yes
Wet space: No
Addition: No
Conversion: No

8 Floor 1 - Storage



Dimensions: 4'0" x 6'0"
Area: 24 sq. ft
Counted as living area: No

Heated: No
Finished: No
Enclosed: No
Contiguous: Yes
Permitted: Yes
Wet space: No
Addition: No
Conversion: No

9 Floor 1 - Utility



Dimensions: 16'10" x 5'4"
Area: 91 sq. ft
Counted as living area: No

Heated: Yes
Finished: No
Enclosed: Yes
Contiguous: Yes
Permitted: Yes
Wet space: No
Addition: No
Conversion: No

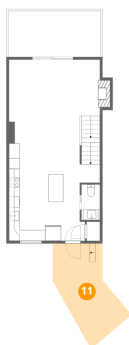
10 Floor 2 - Dining Area



Dimensions: 13'2" x 9'10"
Area: 130 sq. ft
Counted as living area: Yes

Heated: Yes
Finished: Yes
Enclosed: Yes
Contiguous: Yes
Permitted: Yes
Wet space: No
Addition: No
Conversion: No

11 Floor 2 - Porch



Dimensions: 11'2" x 19'7"
Area: 218 sq. ft
Counted as living area: No

Heated: No
Finished: No
Enclosed: No
Contiguous: Yes
Permitted: Yes
Wet space: No
Addition: No
Conversion: No

12 Floor 2 - Kitchen



Dimensions: 14'2" x 13'5"
Area: 190 sq. ft
Counted as living area: Yes

Heated: Yes
Finished: Yes
Enclosed: Yes
Contiguous: Yes
Permitted: Yes
Wet space: No
Addition: No
Conversion: No

13 Floor 2 - Deck



Dimensions: 17'3" x 8'7"
Area: 148 sq. ft
Counted as living area: No

Heated: No
Finished: No
Enclosed: No
Contiguous: Yes
Permitted: Yes
Wet space: No
Addition: No
Conversion: No

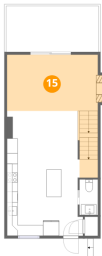
14 Floor 2 - Bath



Dimensions: 3'5" x 6'7"
Area: 22 sq. ft
Counted as living area: Yes

Heated: Yes
Finished: Yes
Enclosed: Yes
Contiguous: Yes
Permitted: Yes
Wet space: Yes
Addition: No
Conversion: No

15 Floor 2 - Living Room



Dimensions: 16'7" x 22'11"
Area: 380 sq. ft
Counted as living area: Yes

Heated: Yes
Finished: Yes
Enclosed: Yes
Contiguous: Yes
Permitted: Yes
Wet space: No
Addition: No
Conversion: No

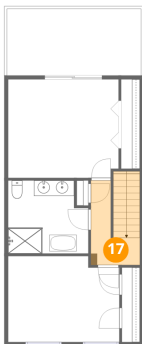
16 Floor 3 - Bath



Dimensions: 10'4" x 9'4"
Area: 96 sq. ft
Counted as living area: Yes

Heated: Yes
Finished: Yes
Enclosed: Yes
Contiguous: Yes
Permitted: Yes
Wet space: Yes
Addition: No
Conversion: No

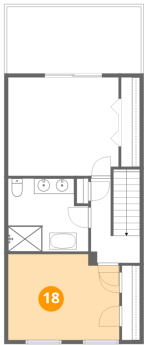
17 Floor 3 - Hall



Dimensions: 6'3" x 10'10"
Area: 68 sq. ft
Counted as living area: Yes

Heated: Yes
Finished: Yes
Enclosed: Yes
Contiguous: Yes
Permitted: Yes
Wet space: No
Addition: No
Conversion: No

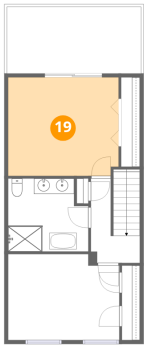
18 Floor 3 - Bedroom



Dimensions: 14'4" x 11'1"
Area: 158 sq. ft
Counted as living area: Yes

Heated: Yes
Finished: Yes
Enclosed: Yes
Contiguous: Yes
Permitted: Yes
Wet space: No
Addition: No
Conversion: No

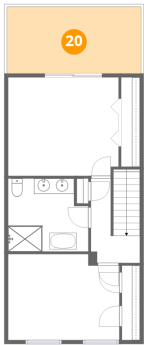
19 Floor 3 - Primary Bedroom



Dimensions: 14'2" x 12'8"
Area: 179 sq. ft
Counted as living area: Yes

Heated: Yes
Finished: Yes
Enclosed: Yes
Contiguous: Yes
Permitted: Yes
Wet space: No
Addition: No
Conversion: No

20 Floor 3 - Balcony



Dimensions: 17'3" x 8'6"
Area: 147 sq. ft
Counted as living area: No

Heated: No
Finished: No
Enclosed: No
Contiguous: Yes
Permitted: Yes
Wet space: No
Addition: No
Conversion: No