

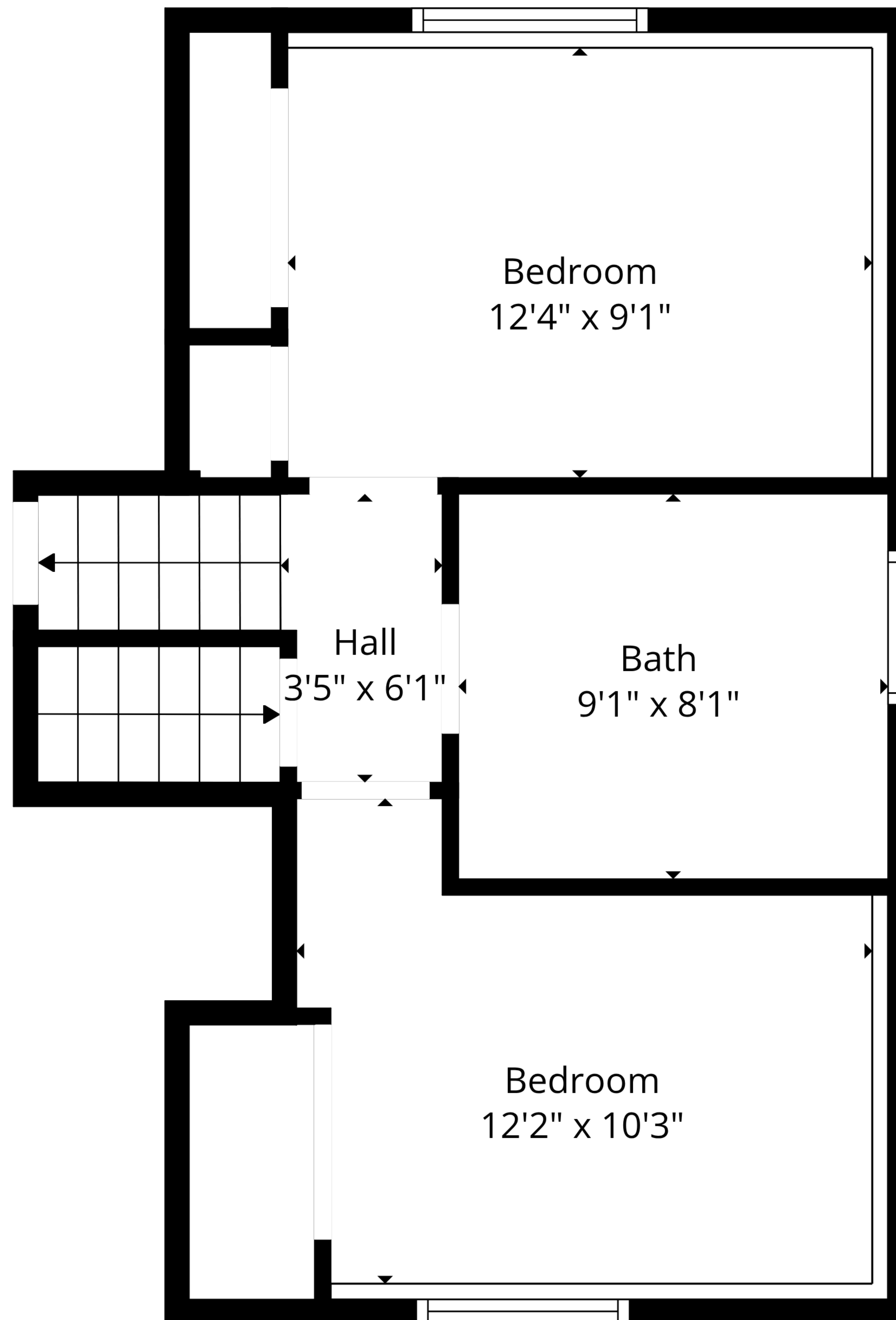
TOTAL: 2091 sq. ft

FLOOR 1: 451 sq. ft, FLOOR 2: 401 sq. ft, FLOOR 3: 517 sq. ft, FLOOR 4: 722 sq. ft

EXCLUDED AREAS: GARAGE: 1277 sq. ft, PATIO: 780 sq. ft, FIREPLACE: 9 sq. ft,

LOW CEILING: 52 sq. ft, WALLS: 342 sq. ft

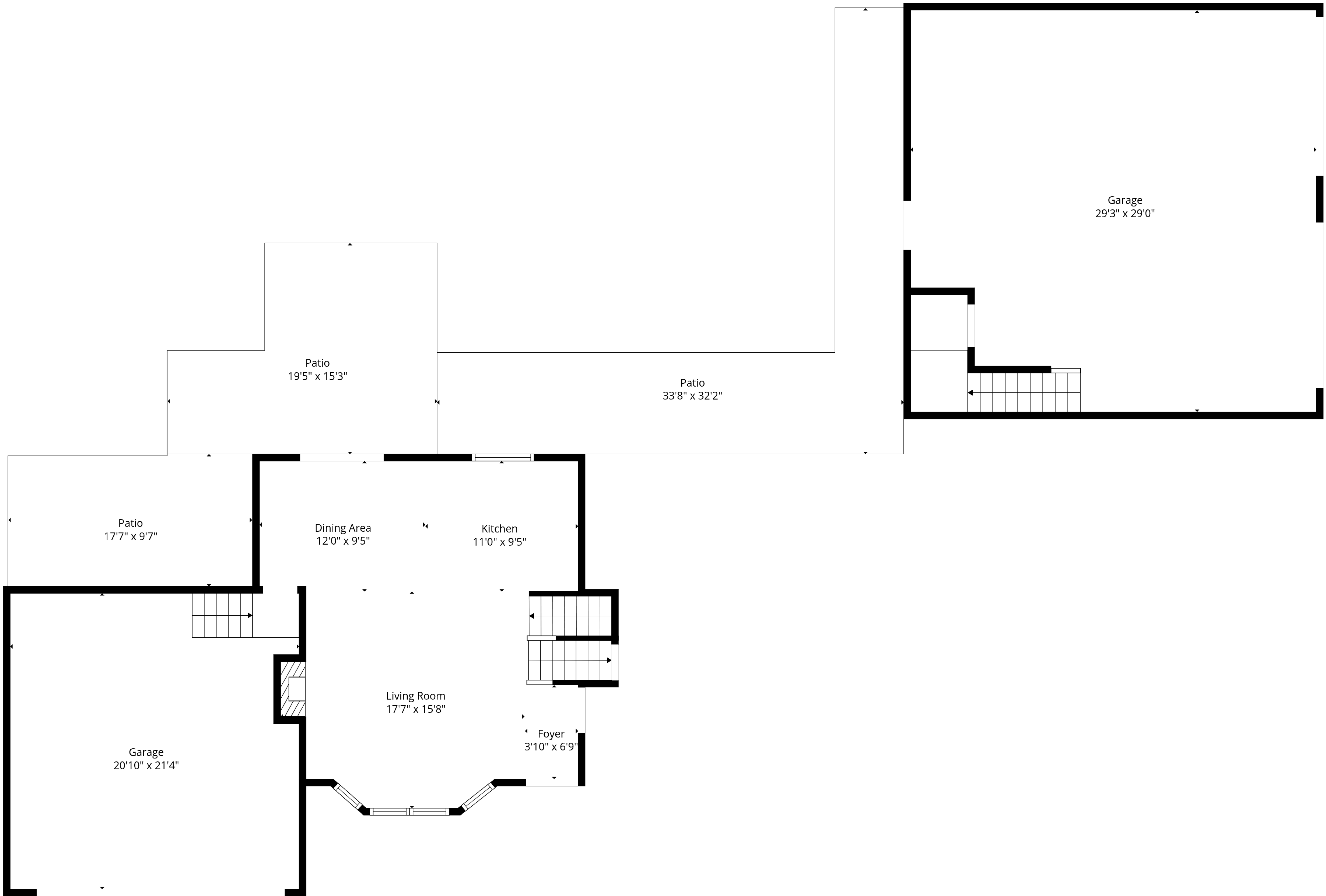




TOTAL: 2091 sq. ft

FLOOR 1: 451 sq. ft, FLOOR 2: 401 sq. ft, FLOOR 3: 517 sq. ft, FLOOR 4: 722 sq. ft
EXCLUDED AREAS: GARAGE: 1277 sq. ft, PATIO: 780 sq. ft, FIREPLACE: 9 sq. ft,
LOW CEILING: 52 sq. ft, WALLS: 342 sq. ft

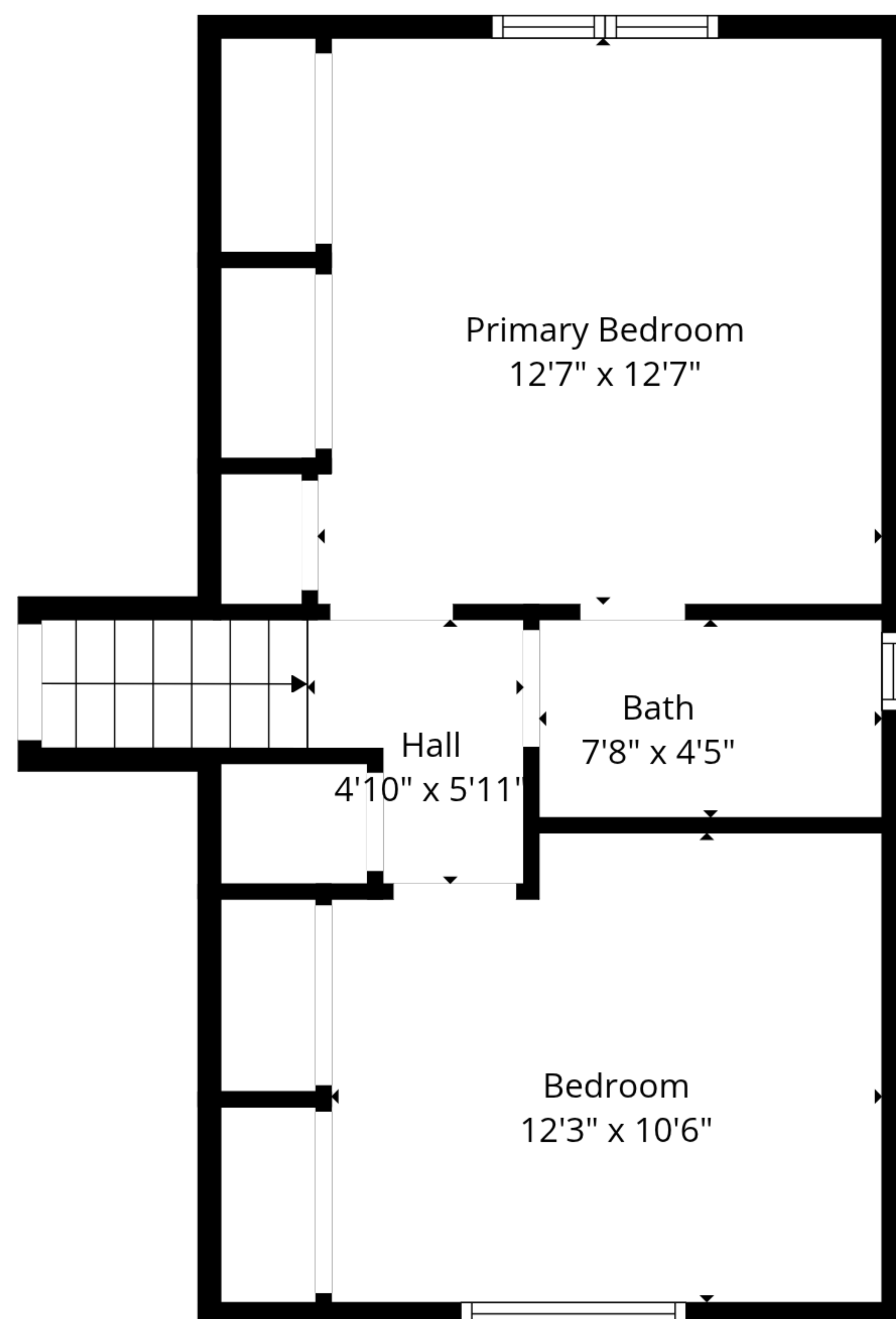
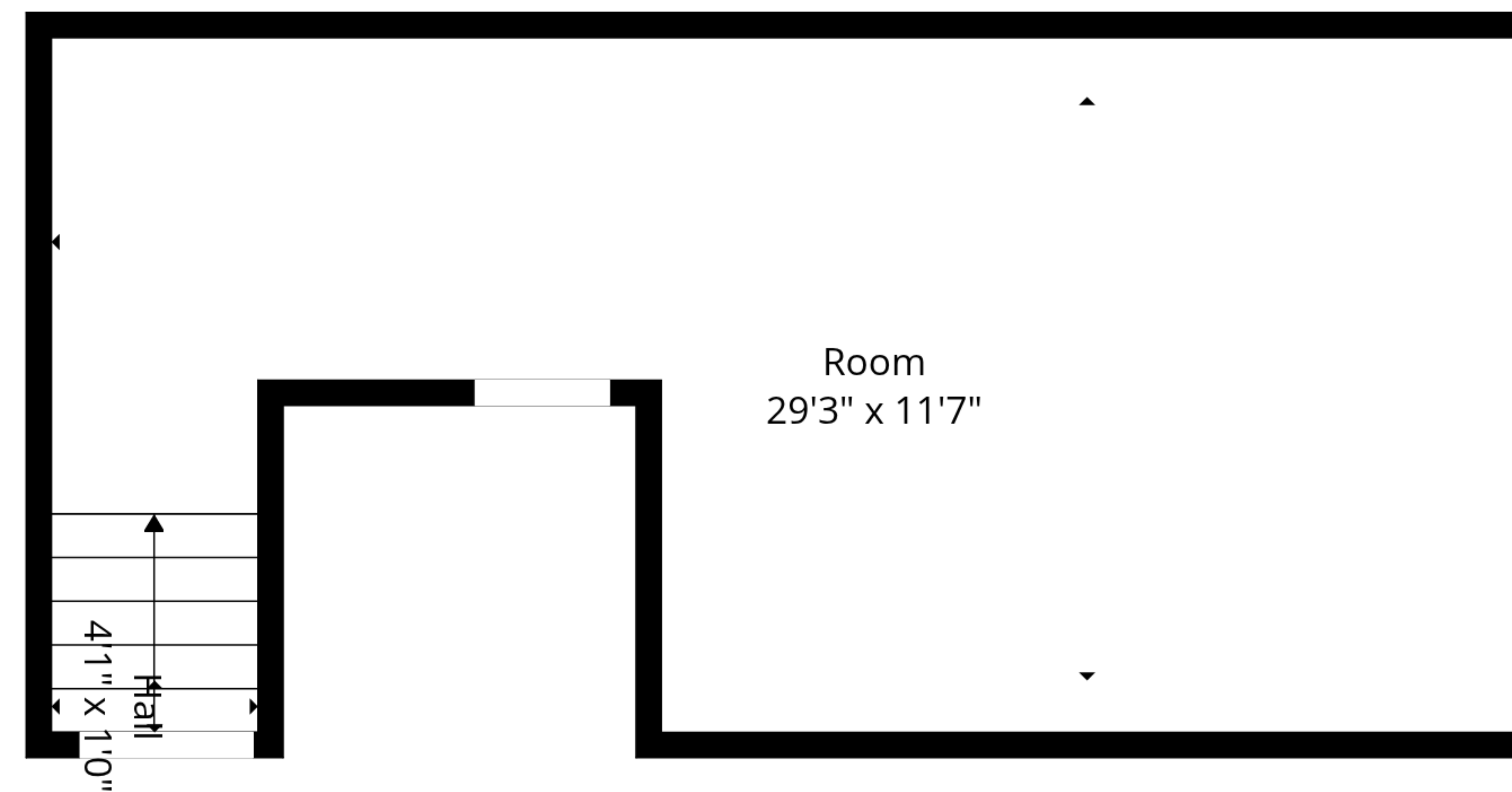




TOTAL: 2091 sq. ft

FLOOR 1: 451 sq. ft, FLOOR 2: 401 sq. ft, FLOOR 3: 517 sq. ft, FLOOR 4: 722 sq. ft
EXCLUDED AREAS: GARAGE: 1277 sq. ft, PATIO: 780 sq. ft, FIREPLACE: 9 sq. ft,
LOW CEILING: 52 sq. ft, WALLS: 342 sq. ft





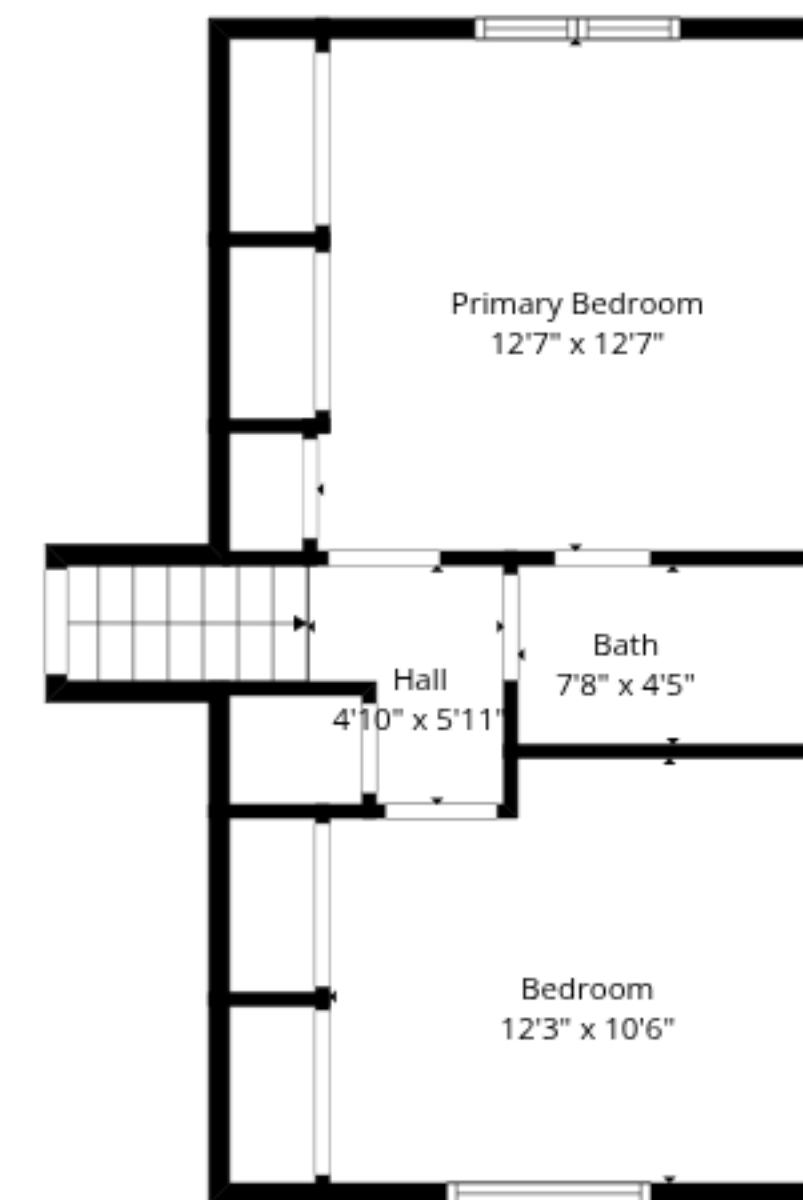
TOTAL: 2091 sq. ft

FLOOR 1: 451 sq. ft, FLOOR 2: 401 sq. ft, FLOOR 3: 517 sq. ft, FLOOR 4: 722 sq. ft

EXCLUDED AREAS: GARAGE: 1277 sq. ft, PATIO: 780 sq. ft, FIREPLACE: 9 sq. ft,

LOW CEILING: 52 sq. ft, WALLS: 342 sq. ft





The floor plan shows a main level with a central Living Room (17'7" x 15'8") featuring a fireplace and a large window. To the left is a Dining Area (12'0" x 9'5") with a built-in bar and a breakfast bar. To the right is a Kitchen (11'0" x 9'5") with a sink, stove, and refrigerator. A Foyer (3'10" x 6'9") leads into the Living Room. There are two patios: a front patio (19'5" x 15'3") and a back patio (33'8" x 32'2"). A large garage (29'3" x 29'0") is attached to the side. The plan also includes a staircase, a fireplace, and various built-in features like a bar and a breakfast bar.

Floor 1

Recreation Room
19'4" x 22'1"

Hall
3'5" x 6'1"

Bath
9'1" x 8'1"

Bedroom
12'4" x 9'1"

Bedroom
12'2" x 10'3"

FLOOR 1: 451 sq. ft, FLOOR 2: 401 sq. ft, FLOOR 3: 517 sq. ft, FLOOR 4: 722 sq. ft
EXCLUDED AREAS: GARAGE: 1277 sq. ft, PATIO: 780 sq. ft, FIREPLACE: 9 sq. ft,
LOW CEILING: 52 sq. ft, WALLS: 342 sq. ft

Floor Plan Created By Cubicasa App. Measurements Deemed Highly Reliable But Not Guaranteed.