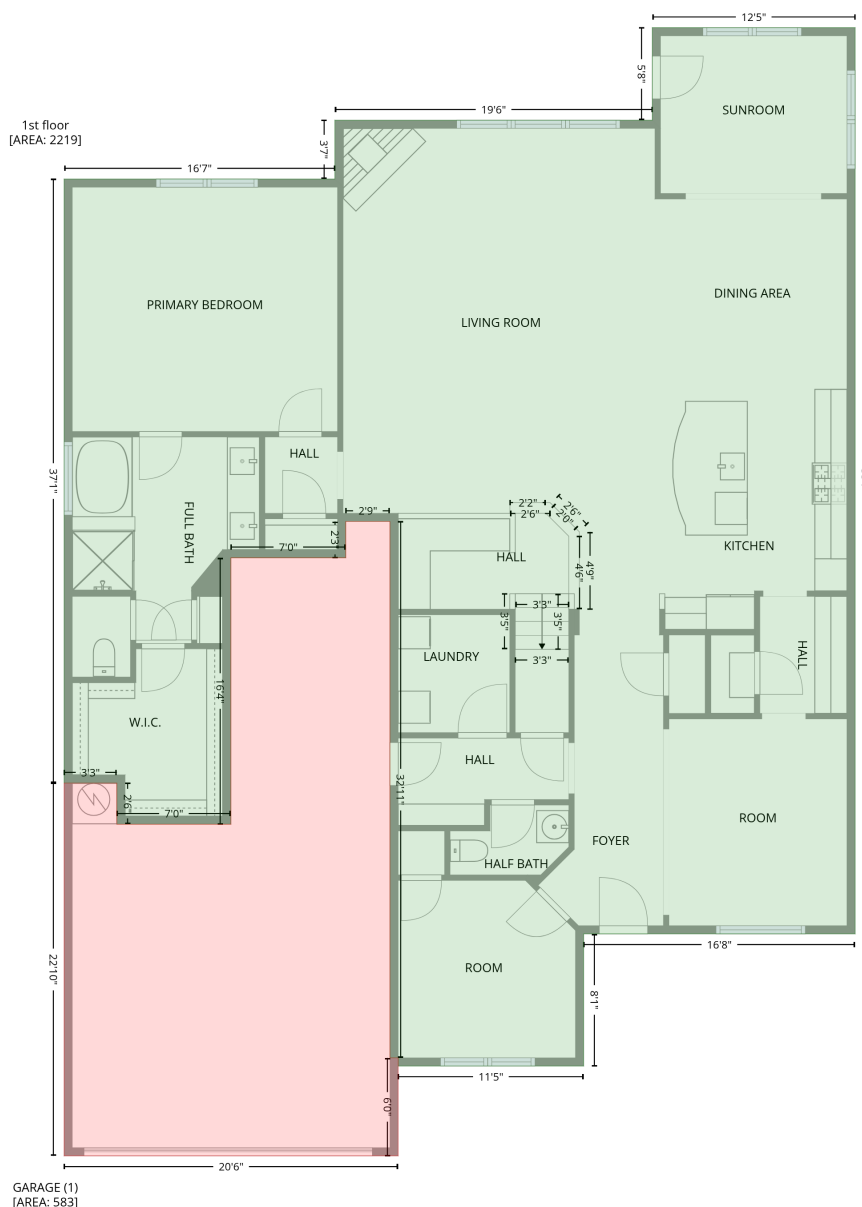


1169 Regions Boulevard, Indian Land, Lancaster County, South Carolina, United States, 29707

Gross Living Area: 3461 sq. ft

Level 1



Space	Area (sq. ft)	Calculation
1st floor (Living area)	2219	Coordinate Polygon Area Algorithm using inches $-((589.8 + 589.8) * (-3.2 - 663.8) + (589.8 + 390.1) * (663.8 - 663.8) + (390.1 + 390.1) * (663.8 - 761) + (390.1 + 253.5) * (761 - 761) + (253.5 + 253.5) * (761 - 755) + (253.5 + 247.5) * (755 - 755) + (247.5 + 247.5) * (755 - 360.2) + (247.5 + 215) * (360.2 - 360.2) + (215 + 215) * (360.2 - 386.9) + (215 + 130.5) * (386.9 - 386.9) + (130.5 + 130.5) * (386.9 - 583.1) + (130.5 + 46.6) * (583.1 - 583.1) + (46.6 + 46.6) * (583.1 - 552.8) + (46.6 + 7.8) * (552.8 - 552.8) + (7.8 + 7.8) * (552.8 - 108.2) + (7.8 + 207) * (108.2 - 108.2) + (207 + 207) * (108.2 - 64.9) + (207 + 440.5) * (64.9 - 64.9) + (440.5 + 440.5) * (64.9 - -3.2) + (440.5 + 589.8) * (-3.2 - -3.2)) * 0.5 * 0.00694$

1169 Regions Boulevard, Indian Land, Lancaster County, South Carolina, United States, 29707

Gross Living Area: 3461 sq. ft

Level 1

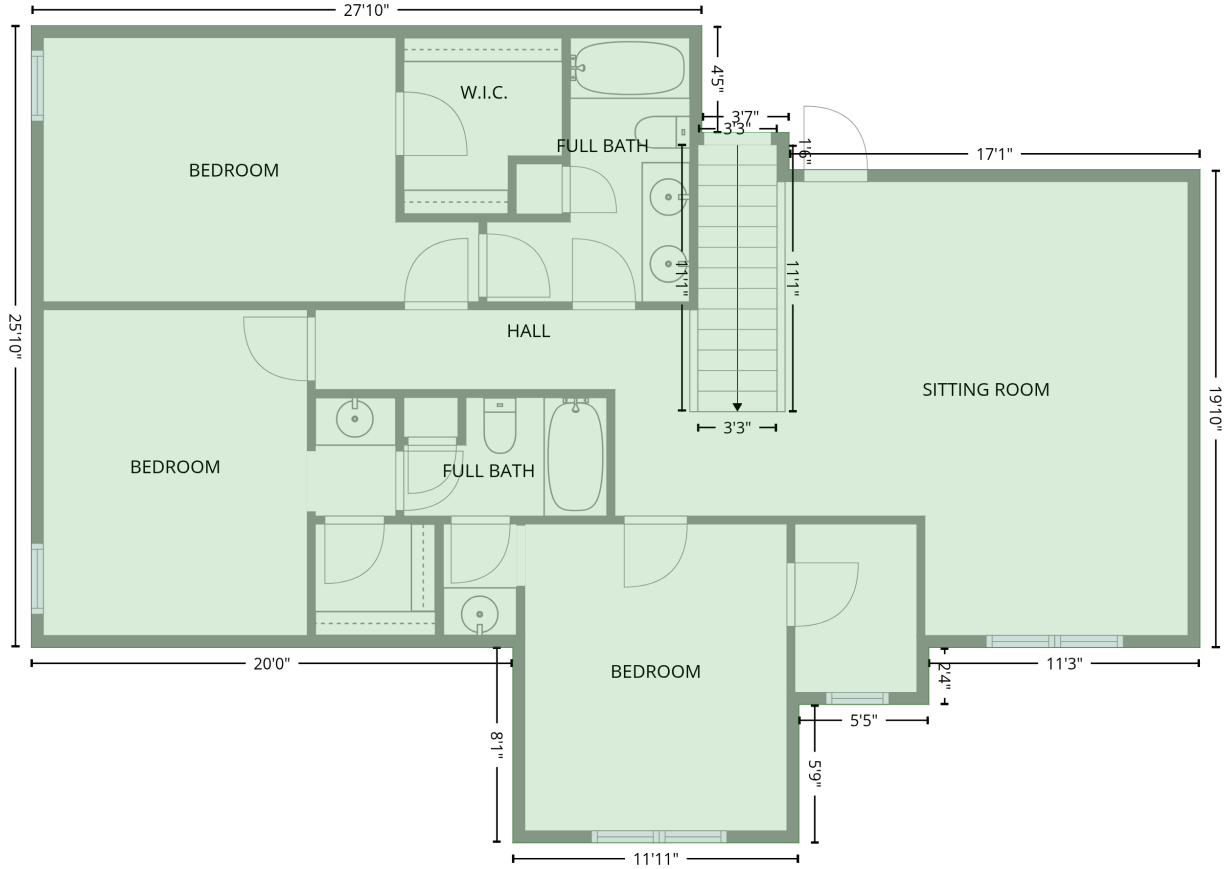
Space	Area (sq. ft)	Calculation <small>Coordinate Polygon Area Algorithm using inches</small>
GARAGE (Non-living area)	583	$\begin{aligned} & -((247.5 + 247.5) * (360.2 - 755) + (247.5 + 253.5) * (755 - 755) + (253.5 + 253.5) * (755 - 827.2) \\ & + (253.5 + 7.8) * (827.2 - 827.2) + (7.8 + 7.8) * (827.2 - 552.8) + (7.8 + 46.6) * (552.8 - 552.8) + \\ & (46.6 + 46.6) * (552.8 - 583.1) + (46.6 + 130.5) * (583.1 - 583.1) + (130.5 + 130.5) * (583.1 - \\ & 386.9) + (130.5 + 215) * (386.9 - 386.9) + (215 + 215) * (386.9 - 360.2) + (215 + 247.5) * (360.2 - \\ & 360.2)) * 0.5 * 0.00694 \end{aligned}$

1169 Regions Boulevard, Indian Land, Lancaster County, South Carolina, United States, 29707

Gross Living Area: 3461 sq. ft

Level 2

2nd floor
[AREA: 1242]



Space	Area (sq. ft)	Calculation <small>Coordinate Polygon Area Algorithm using inches</small>
2nd floor (Living area)	1242	$-((341.7 + 341.7) * (354.2 - 407.4) + (341.7 + 385.1) * (407.4 - 407.4) + (385.1 + 385.1) * (407.4 - 425.9) + (385.1 + 589.8) * (425.9 - 425.9) + (589.8 + 589.8) * (425.9 - 663.8) + (589.8 + 454.8) * (663.8 - 663.8) + (454.8 + 454.8) * (663.8 - 692.1) + (454.8 + 390.1) * (692.1 - 692.1) + (390.1 + 390.1) * (692.1 - 761) + (390.1 + 247.5) * (761 - 761) + (247.5 + 247.5) * (761 - 663.8) + (247.5 + 7.8) * (663.8 - 663.8) + (7.8 + 7.8) * (663.8 - 354.2) + (7.8 + 341.7) * (354.2 - 354.2)) * 0.5 * 0.00694$