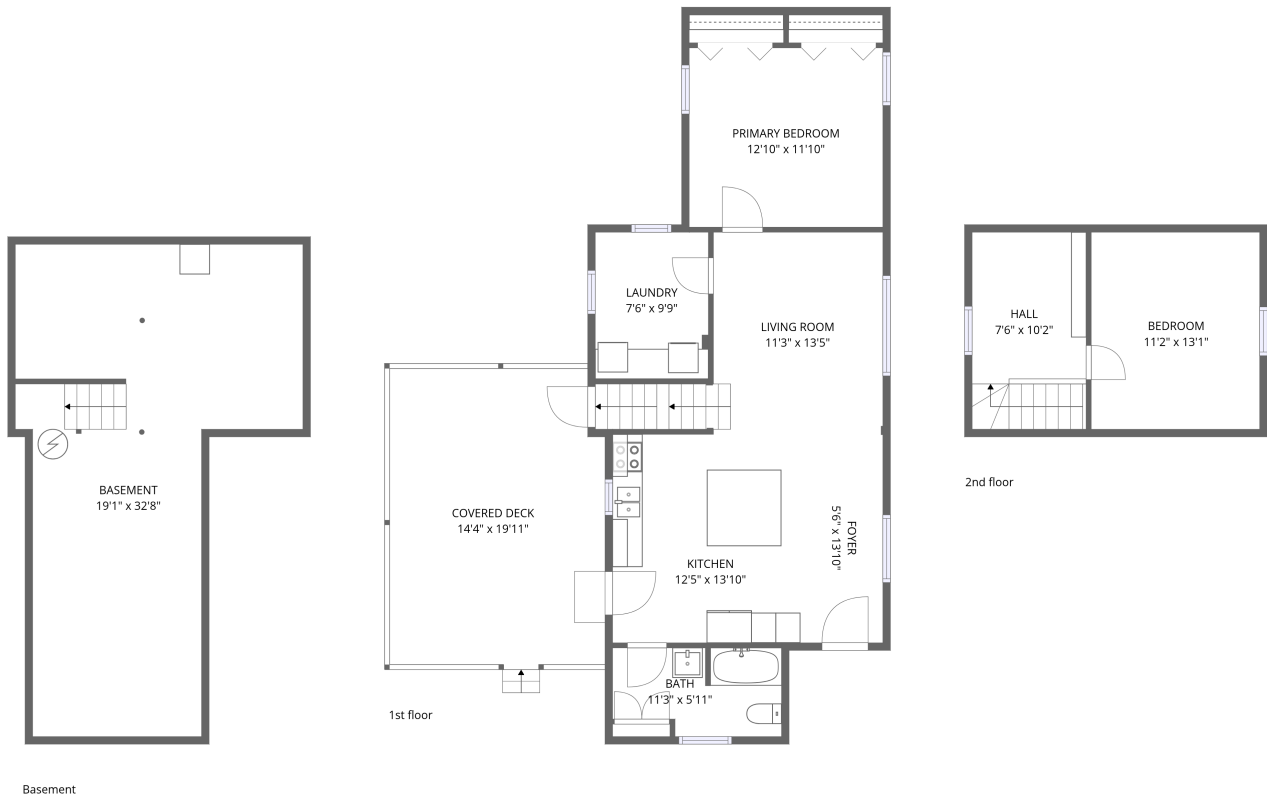


Home data report

3823 Oxbow Rd,Sodus,MI,US



**Total Area: 987 sq. ft**

Basement: 0 sq. ft, 1st Floor: 760 sq. ft, 2nd Floor: 227 sq. ft

Excluded: Basement 464 sq. ft, Covered deck 277 sq. ft, Low ceiling 23 sq. ft, Walls: 151 sq. ft

## Property summary

 **3** Floors

 **2** Bedrooms

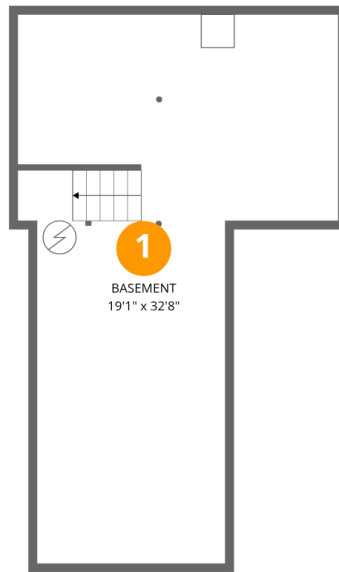
 **1** Bathrooms

Scan captured on Tue, 07 Apr 2026 20:46:42 GMT

FLOOR PLAN CREATED BY CUBICASA APP. MEASUREMENTS DEEMED HIGHLY RELIABLE BUT NOT GUARANTEED.

Home data report

3823 Oxbow Rd,Sodus,MI,US



## Room dimensions

Floor 1 Below grade

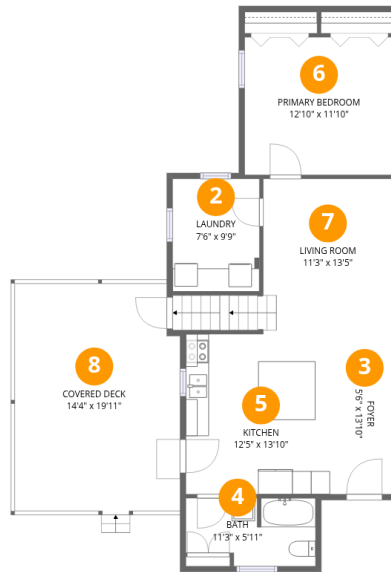
Total:0sqft

Excluded: 464sqft

#		Dimensions	sqft	Counted as living area
1	Basement	19'1" x 32'8"	623 sq. ft	No

# Home data report

## 3823 Oxbow Rd,Sodus,MI,US



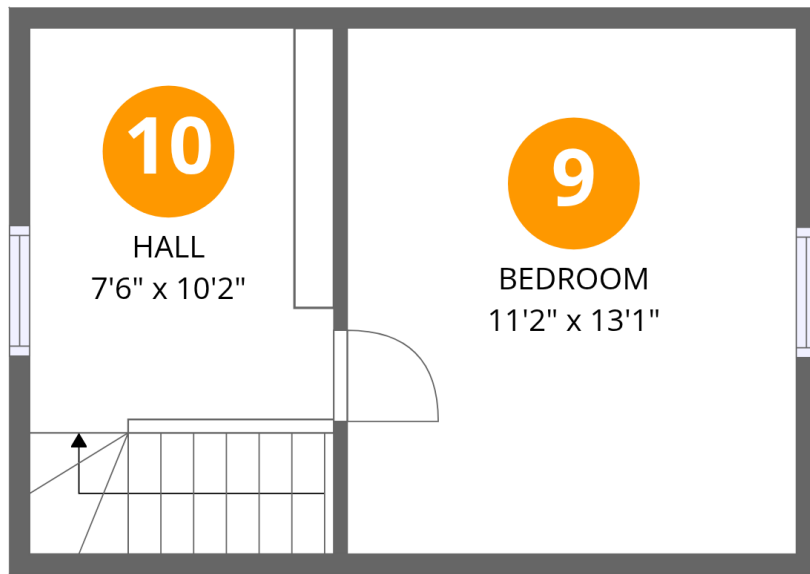
## Room dimensions

Floor 2

Total:760sqft

Excluded: 277sqft

#		Dimensions	sqft	Counted as living area
2	Laundry	7'6" x 9'9"	73 sq. ft	Yes
3	Foyer	5'6" x 13'10"	76 sq. ft	Yes
4	Bath	11'3" x 5'11"	66 sq. ft	Yes
5	Kitchen	12'5" x 13'10"	172 sq. ft	Yes
6	Primary Bedroom	12'10" x 11'10"	152 sq. ft	Yes
7	Living Room	11'3" x 13'5"	151 sq. ft	Yes
8	Covered Deck	14'4" x 19'11"	285 sq. ft	No



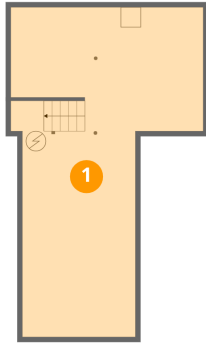
## Room dimensions

Floor 3

Total:227sqft Excluded: 23sqft

#		Dimensions	sqft	Counted as living area
9	Bedroom	11'2" x 13'1"	146 sq. ft	Yes
10	Hall	7'6" x 10'2"	76 sq. ft	Yes

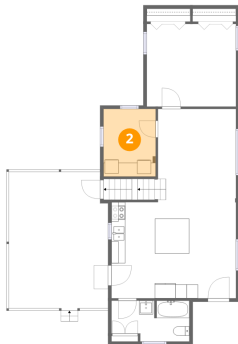
## 1 Floor 1 - Basement



Dimensions: 19'1" x 32'8"  
Area: 623 sq. ft  
Counted as living area: No

Heated: Yes  
Finished: No  
Enclosed: Yes  
Contiguous: Yes  
Permitted: Yes  
Wet space: No  
Addition: No  
Conversion: No

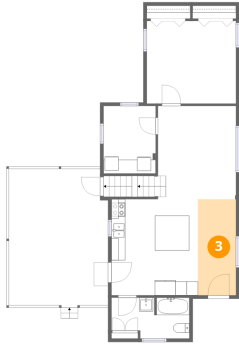
## 2 Floor 2 - Laundry



Dimensions: 7'6" x 9'9"  
Area: 73 sq. ft  
Counted as living area: Yes

Heated: Yes  
Finished: Yes  
Enclosed: Yes  
Contiguous: Yes  
Permitted: Yes  
Wet space: No  
Addition: No  
Conversion: No

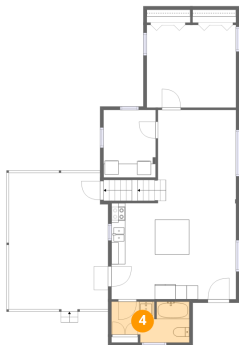
### 3 Floor 2 - Foyer



Dimensions: 5'6" x 13'10"  
Area: 76 sq. ft  
Counted as living area: Yes

Heated: Yes  
Finished: Yes  
Enclosed: Yes  
Contiguous: Yes  
Permitted: Yes  
Wet space: No  
Addition: No  
Conversion: No

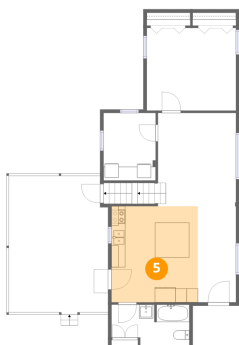
### 4 Floor 2 - Bath



Dimensions: 11'3" x 5'11"  
Area: 66 sq. ft  
Counted as living area: Yes

Heated: Yes  
Finished: Yes  
Enclosed: Yes  
Contiguous: Yes  
Permitted: Yes  
Wet space: Yes  
Addition: No  
Conversion: No

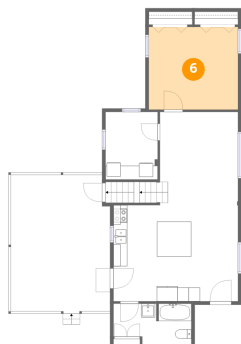
### 5 Floor 2 - Kitchen



Dimensions: 12'5" x 13'10"  
Area: 172 sq. ft  
Counted as living area: Yes

Heated: Yes  
Finished: Yes  
Enclosed: Yes  
Contiguous: Yes  
Permitted: Yes  
Wet space: No  
Addition: No  
Conversion: No

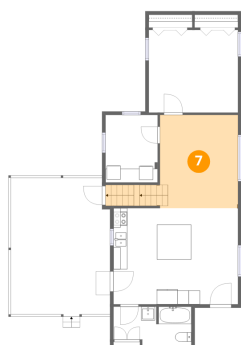
## 6 Floor 2 - Primary Bedroom



Dimensions: 12'10" x 11'10"  
Area: 152 sq. ft  
Counted as living area: Yes

Heated: Yes  
Finished: Yes  
Enclosed: Yes  
Contiguous: Yes  
Permitted: Yes  
Wet space: No  
Addition: No  
Conversion: No

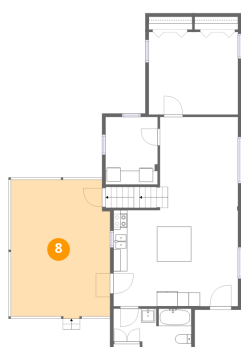
## 7 Floor 2 - Living Room



Dimensions: 11'3" x 13'5"  
Area: 151 sq. ft  
Counted as living area: Yes

Heated: Yes  
Finished: Yes  
Enclosed: Yes  
Contiguous: Yes  
Permitted: Yes  
Wet space: No  
Addition: No  
Conversion: No

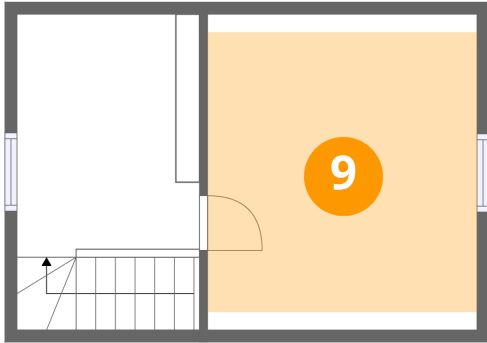
## 8 Floor 2 - Covered Deck



Dimensions: 14'4" x 19'11"  
Area: 285 sq. ft  
Counted as living area: No

Heated: No  
Finished: No  
Enclosed: No  
Contiguous: Yes  
Permitted: Yes  
Wet space: No  
Addition: No  
Conversion: No

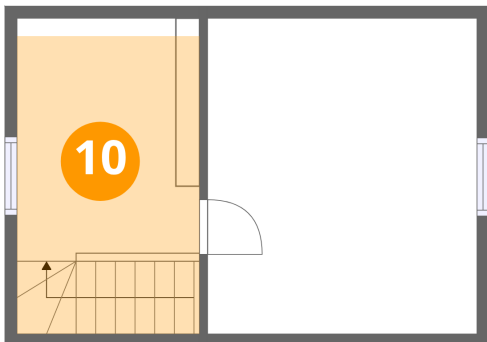
**9** Floor 3 - Bedroom



Dimensions: 11'2" x 13'1"  
Area: 146 sq. ft  
Counted as living area: Yes

Heated: Yes  
Finished: Yes  
Enclosed: Yes  
Contiguous: Yes  
Permitted: Yes  
Wet space: No  
Addition: No  
Conversion: No

**10** Floor 3 - Hall



Dimensions: 7'6" x 10'2"  
Area: 76 sq. ft  
Counted as living area: Yes

Heated: Yes  
Finished: Yes  
Enclosed: Yes  
Contiguous: Yes  
Permitted: Yes  
Wet space: No  
Addition: No  
Conversion: No