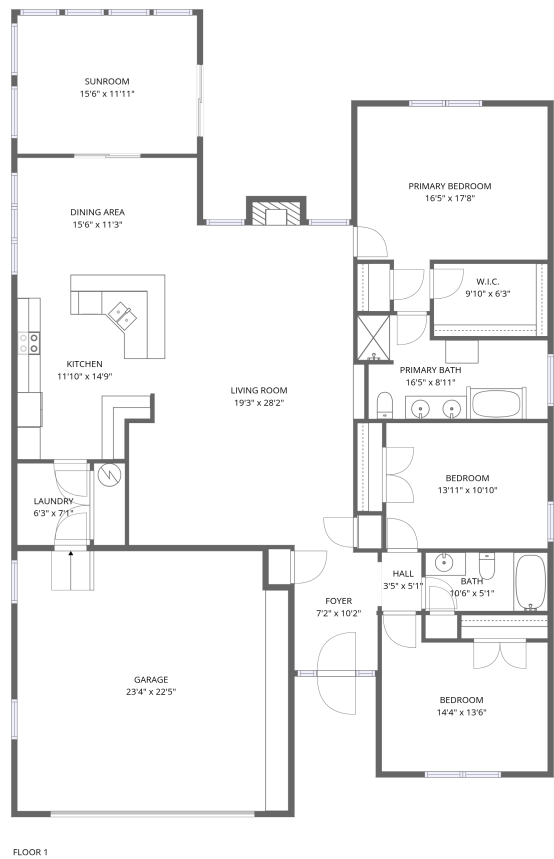


Home report

1613 Edgebrook Road, Buckingham Estates, Salem, Roanoke County, Virginia, United States, 24153




Total Area: 2076 sq. ft


Floor 1: 2076 sq. ft

Excluded: Garage 516 sq. ft, Fireplace 10 sq. ft, Walls: 149 sq. ft

Property summary

 1 Floors

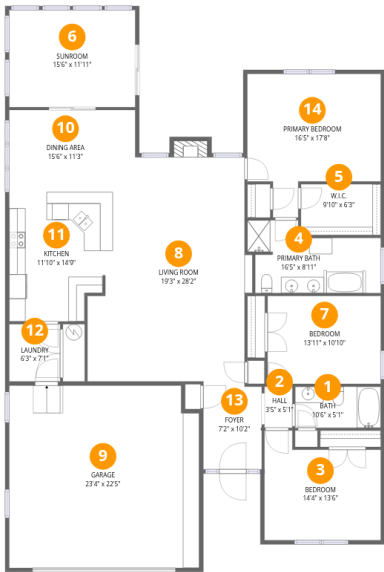
 3 Bedrooms

 2 Bathrooms

 1 Garages

Home report

1613 Edgebrook Road, Buckingham Estates, Salem, Roanoke County, Virginia, United States, 24153



Room dimensions

Floor 1

Total:2076sqft Excluded: 526sqft

#		Max Dimensions	sqft	Included
1	Bath	10'6" x 5'1"	53 sq. ft	Yes
2	Hall	3'5" x 5'1"	17 sq. ft	Yes
3	Bedroom	14'4" x 13'6"	167 sq. ft	Yes
4	Primary Bath	16'5" x 8'11"	119 sq. ft	Yes
5	W.I.C.	9'10" x 6'3"	61 sq. ft	Yes
6	Sunroom	15'6" x 11'11"	185 sq. ft	Yes
7	Bedroom	13'11" x 10'10"	151 sq. ft	Yes
8	Living Room	19'3" x 28'2"	511 sq. ft	Yes
9	Garage	23'4" x 22'5"	516 sq. ft	No
10	Dining Area	15'6" x 11'3"	154 sq. ft	Yes
11	Kitchen	11'10" x 14'9"	165 sq. ft	Yes

Home report

1613 Edgebrook Road, Buckingham Estates, Salem, Roanoke County, Virginia, United States, 24153

#		Max Dimensions	sqft	Included
12	Laundry	6'3" x 7'1"	44 sq. ft	Yes
13	Foyer	7'2" x 10'2"	73 sq. ft	Yes
14	Primary Bedroom	16'5" x 17'8"	231 sq. ft	Yes

1613 Edgebrook Road, Buckingham Estates, Salem, Roanoke County, Virginia, United States, 24153

1 Floor 1 - Bath



Max Dimensions: 10'6" x 5'1"
Calculated Area: 53 sq. ft
Included: Yes

Heated: Yes
Finished: Yes
Enclosed: Yes
Contiguous: Yes
Permitted: Yes
Wet space: Yes
Addition: No
Conversion: No

2 Floor 1 - Hall

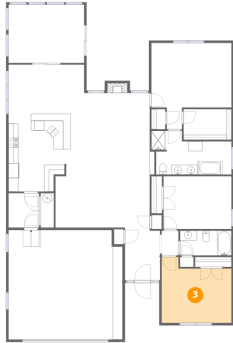


Max Dimensions: 3'5" x 5'1"
Calculated Area: 17 sq. ft
Included: Yes

Heated: Yes
Finished: Yes
Enclosed: Yes
Contiguous: Yes
Permitted: Yes
Wet space: No
Addition: No
Conversion: No

1613 Edgebrook Road, Buckingham Estates, Salem, Roanoke County, Virginia, United States, 24153

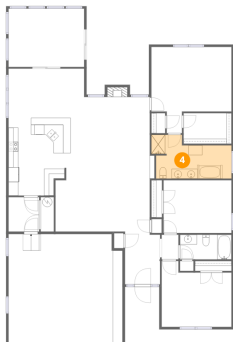
3 Floor 1 - Bedroom



Max Dimensions: 14'4" x 13'6"
Calculated Area: 167 sq. ft
Included: Yes

Heated: Yes
Finished: Yes
Enclosed: Yes
Contiguous: Yes
Permitted: Yes
Wet space: No
Addition: No
Conversion: No

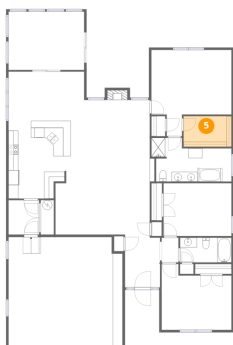
4 Floor 1 - Primary Bath



Max Dimensions: 16'5" x 8'11"
Calculated Area: 119 sq. ft
Included: Yes

Heated: Yes
Finished: Yes
Enclosed: Yes
Contiguous: Yes
Permitted: Yes
Wet space: Yes
Addition: No
Conversion: No

5 Floor 1 - W.I.C.

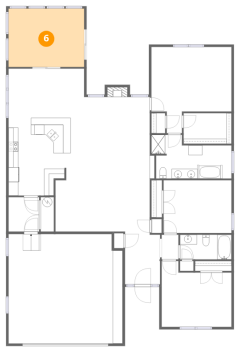


Max Dimensions: 9'10" x 6'3"
Calculated Area: 61 sq. ft
Included: Yes

Heated: Yes
Finished: Yes
Enclosed: Yes
Contiguous: Yes
Permitted: Yes
Wet space: No
Addition: No
Conversion: No

1613 Edgebrook Road, Buckingham Estates, Salem, Roanoke County, Virginia, United States, 24153

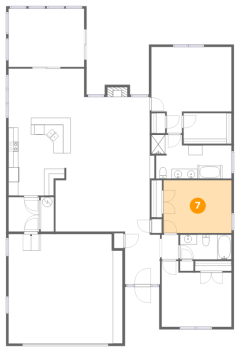
6 Floor 1 - Sunroom



Max Dimensions: 15'6" x 11'11"
Calculated Area: 185 sq. ft
Included: Yes

Heated: Yes
Finished: Yes
Enclosed: Yes
Contiguous: Yes
Permitted: Yes
Wet space: No
Addition: No
Conversion: No

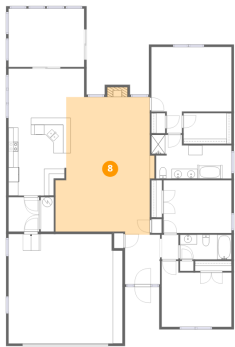
7 Floor 1 - Bedroom



Max Dimensions: 13'11" x 10'10"
Calculated Area: 151 sq. ft
Included: Yes

Heated: Yes
Finished: Yes
Enclosed: Yes
Contiguous: Yes
Permitted: Yes
Wet space: No
Addition: No
Conversion: No

8 Floor 1 - Living Room



Max Dimensions: 19'3" x 28'2"
Calculated Area: 511 sq. ft
Included: Yes

Heated: Yes
Finished: Yes
Enclosed: Yes
Contiguous: Yes
Permitted: Yes
Wet space: No
Addition: No
Conversion: No

1613 Edgebrook Road, Buckingham Estates, Salem, Roanoke County, Virginia, United States, 24153

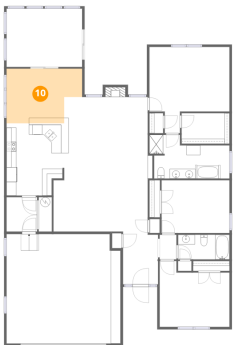
9 Floor 1 - Garage



Max Dimensions: 23'4" x 22'5"
Calculated Area: 516 sq. ft
Included: No

Heated: No
Finished: No
Enclosed: Yes
Contiguous: Yes
Permitted: Yes
Wet space: No
Addition: No
Conversion: No

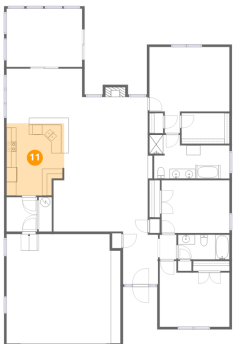
10 Floor 1 - Dining Area



Max Dimensions: 15'6" x 11'3"
Calculated Area: 154 sq. ft
Included: Yes

Heated: Yes
Finished: Yes
Enclosed: Yes
Contiguous: Yes
Permitted: Yes
Wet space: No
Addition: No
Conversion: No

11 Floor 1 - Kitchen

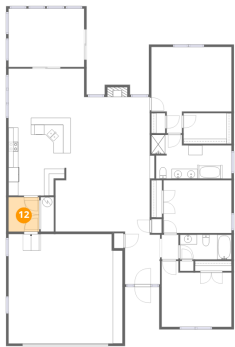


Max Dimensions: 11'10" x 14'9"
Calculated Area: 165 sq. ft
Included: Yes

Heated: Yes
Finished: Yes
Enclosed: Yes
Contiguous: Yes
Permitted: Yes
Wet space: No
Addition: No
Conversion: No

1613 Edgebrook Road, Buckingham Estates, Salem, Roanoke County, Virginia, United States, 24153

12 Floor 1 - Laundry



Max Dimensions: 6'3" x 7'1"
Calculated Area: 44 sq. ft
Included: Yes

Heated: Yes
Finished: Yes
Enclosed: Yes
Contiguous: Yes
Permitted: Yes
Wet space: No
Addition: No
Conversion: No

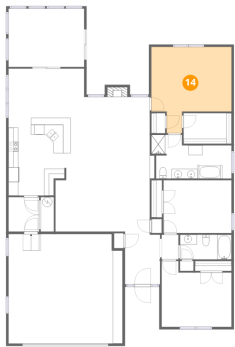
13 Floor 1 - Foyer



Max Dimensions: 7'2" x 10'2"
Calculated Area: 73 sq. ft
Included: Yes

Heated: Yes
Finished: Yes
Enclosed: Yes
Contiguous: Yes
Permitted: Yes
Wet space: No
Addition: No
Conversion: No

14 Floor 1 - Primary Bedroom



Max Dimensions: 16'5" x 17'8"
Calculated Area: 231 sq. ft
Included: Yes

Heated: Yes
Finished: Yes
Enclosed: Yes
Contiguous: Yes
Permitted: Yes
Wet space: No
Addition: No
Conversion: No