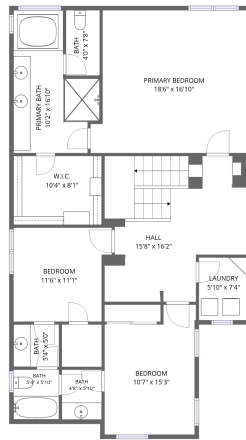


Home data report

718 Annie Way, Santa Maria, CA, US

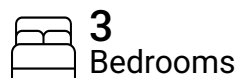


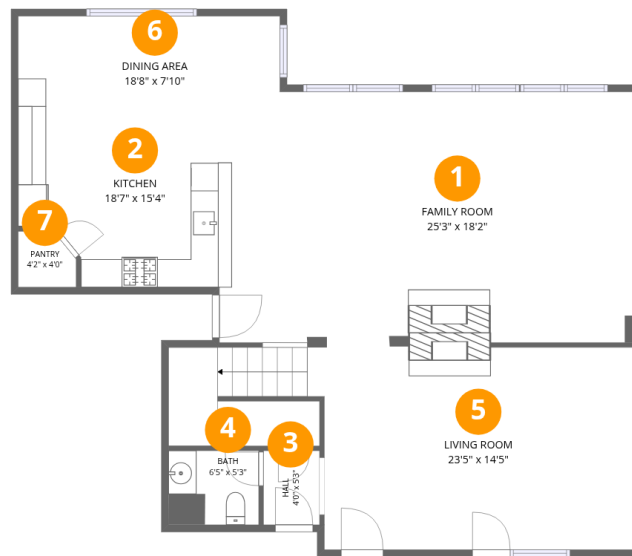
Total Area: 2569 sq. ft

1st Floor: 1297 sq. ft, 2nd Floor: 1272 sq. ft

Excluded: Walls: 166 sq. ft

Property summary



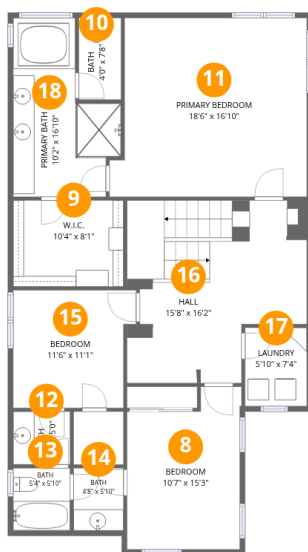


Room dimensions

Floor 1

Total: 1297 sqft Excluded: 0 sqft

#		Dimensions	sqft	Counted as living area
1	Family Room	25'3" x 18'2"	457 sq. ft	Yes
2	Kitchen	18'7" x 15'4"	212 sq. ft	Yes
3	Hall	4'0" x 5'3"	21 sq. ft	Yes
4	Bath	6'5" x 5'3"	34 sq. ft	Yes
5	Living Room	23'5" x 14'5"	370 sq. ft	Yes
6	Dining Area	18'8" x 7'10"	147 sq. ft	Yes
7	Pantry	4'2" x 4'0"	15 sq. ft	Yes



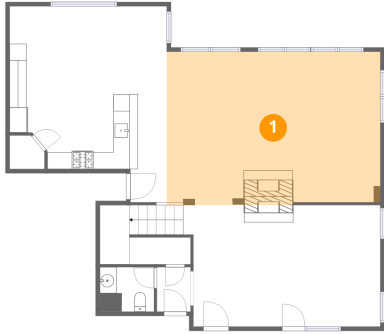
Room dimensions

Floor 2

Total: 1272 sqft Excluded: 0 sqft

#		Dimensions	sqft	Counted as living area
8	Bedroom	10'7" x 15'3"	146 sq. ft	Yes
9	W.I.C.	10'4" x 8'1"	84 sq. ft	Yes
10	Bath	4'0" x 7'8"	30 sq. ft	Yes
11	Primary Bedroom	18'6" x 16'10"	292 sq. ft	Yes
12	Bath	5'4" x 5'0"	27 sq. ft	Yes
13	Bath	5'4" x 5'10"	31 sq. ft	Yes
14	Bath	4'8" x 5'10"	27 sq. ft	Yes
15	Bedroom	11'6" x 11'1"	118 sq. ft	Yes
16	Hall	15'8" x 16'2"	250 sq. ft	Yes
17	Laundry	5'10" x 7'4"	43 sq. ft	Yes
18	Primary Bath	10'2" x 16'10"	130 sq. ft	Yes

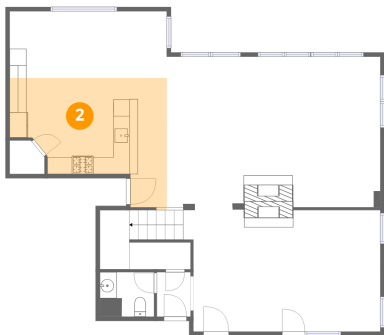
1 Floor 1 - Family Room



Dimensions: 25'3" x 18'2"
Area: 457 sq. ft
Counted as living area: Yes

Heated: Yes
Finished: Yes
Enclosed: Yes
Contiguous: Yes
Permitted: Yes
Wet space: No
Addition: No
Conversion: No

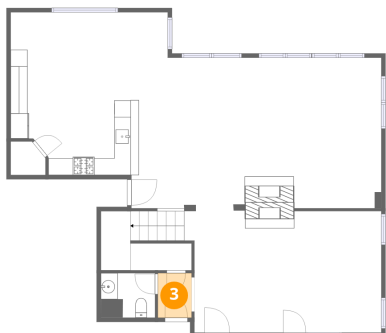
2 Floor 1 - Kitchen



Dimensions: 18'7" x 15'4"
Area: 212 sq. ft
Counted as living area: Yes

Heated: Yes
Finished: Yes
Enclosed: Yes
Contiguous: Yes
Permitted: Yes
Wet space: No
Addition: No
Conversion: No

3 Floor 1 - Hall



Dimensions: 4'0" x 5'3"
Area: 21 sq. ft
Counted as living area: Yes

Heated: Yes
Finished: Yes
Enclosed: Yes
Contiguous: Yes
Permitted: Yes
Wet space: No
Addition: No
Conversion: No

4 Floor 1 - Bath



Dimensions: 6'5" x 5'3"
Area: 34 sq. ft
Counted as living area: Yes

Heated: Yes
Finished: Yes
Enclosed: Yes
Contiguous: Yes
Permitted: Yes
Wet space: No
Addition: No
Conversion: No

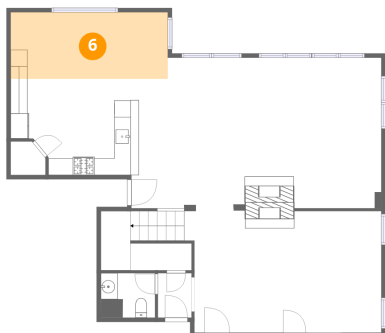
5 Floor 1 - Living Room



Dimensions: 23'5" x 14'5"
Area: 370 sq. ft
Counted as living area: Yes

Heated: Yes
Finished: Yes
Enclosed: Yes
Contiguous: Yes
Permitted: Yes
Wet space: No
Addition: No
Conversion: No

6 Floor 1 - Dining Area



Dimensions: 18'8" x 7'10"
Area: 147 sq. ft
Counted as living area: Yes

Heated: Yes
Finished: Yes
Enclosed: Yes
Contiguous: Yes
Permitted: Yes
Wet space: No
Addition: No
Conversion: No

7 Floor 1 - Pantry



Dimensions: 4'2" x 4'0"
Area: 15 sq. ft
Counted as living area: Yes

Heated: Yes
Finished: Yes
Enclosed: Yes
Contiguous: Yes
Permitted: Yes
Wet space: No
Addition: No
Conversion: No

8 Floor 2 - Bedroom



Dimensions: 10'7" x 15'3"
Area: 146 sq. ft
Counted as living area: Yes

Heated: Yes
Finished: Yes
Enclosed: Yes
Contiguous: Yes
Permitted: Yes
Wet space: No
Addition: No
Conversion: No

9 Floor 2 - W.I.C.



Dimensions: 10'4" x 8'1"
Area: 84 sq. ft
Counted as living area: Yes

Heated: Yes
Finished: Yes
Enclosed: Yes
Contiguous: Yes
Permitted: Yes
Wet space: No
Addition: No
Conversion: No

10 Floor 2 - Bath



Dimensions: 4'0" x 7'8"
Area: 30 sq. ft
Counted as living area: Yes

Heated: Yes
Finished: Yes
Enclosed: Yes
Contiguous: Yes
Permitted: Yes
Wet space: Yes
Addition: No
Conversion: No

11 Floor 2 - Primary Bedroom



Dimensions: 18'6" x 16'10"
Area: 292 sq. ft
Counted as living area: Yes

Heated: Yes
Finished: Yes
Enclosed: Yes
Contiguous: Yes
Permitted: Yes
Wet space: No
Addition: No
Conversion: No

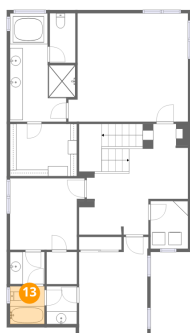
12 Floor 2 - Bath



Dimensions: 5'4" x 5'0"
Area: 27 sq. ft
Counted as living area: Yes

Heated: Yes
Finished: Yes
Enclosed: Yes
Contiguous: Yes
Permitted: Yes
Wet space: Yes
Addition: No
Conversion: No

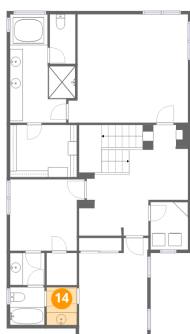
13 Floor 2 - Bath



Dimensions: 5'4" x 5'10"
Area: 31 sq. ft
Counted as living area: Yes

Heated: Yes
Finished: Yes
Enclosed: Yes
Contiguous: Yes
Permitted: Yes
Wet space: Yes
Addition: No
Conversion: No

14 Floor 2 - Bath



Dimensions: 4'8" x 5'10"
Area: 27 sq. ft
Counted as living area: Yes

Heated: Yes
Finished: Yes
Enclosed: Yes
Contiguous: Yes
Permitted: Yes
Wet space: Yes
Addition: No
Conversion: No

15 Floor 2 - Bedroom



Dimensions: 11'6" x 11'1"
Area: 118 sq. ft
Counted as living area: Yes

Heated: Yes
Finished: Yes
Enclosed: Yes
Contiguous: Yes
Permitted: Yes
Wet space: No
Addition: No
Conversion: No

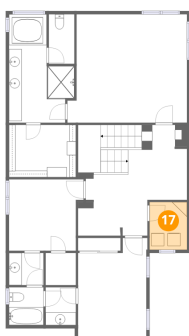
16 Floor 2 - Hall



Dimensions: 15'8" x 16'2"
Area: 250 sq. ft
Counted as living area: Yes

Heated: Yes
Finished: Yes
Enclosed: Yes
Contiguous: Yes
Permitted: Yes
Wet space: No
Addition: No
Conversion: No

17 Floor 2 - Laundry



Dimensions: 5'10" x 7'4"
Area: 43 sq. ft
Counted as living area: Yes

Heated: Yes
Finished: Yes
Enclosed: Yes
Contiguous: Yes
Permitted: Yes
Wet space: No
Addition: No
Conversion: No

18 Floor 2 - Primary Bath



Dimensions: 10'2" x 16'10"
Area: 130 sq. ft
Counted as living area: Yes

Heated: Yes
Finished: Yes
Enclosed: Yes
Contiguous: Yes
Permitted: Yes
Wet space: Yes
Addition: No
Conversion: No