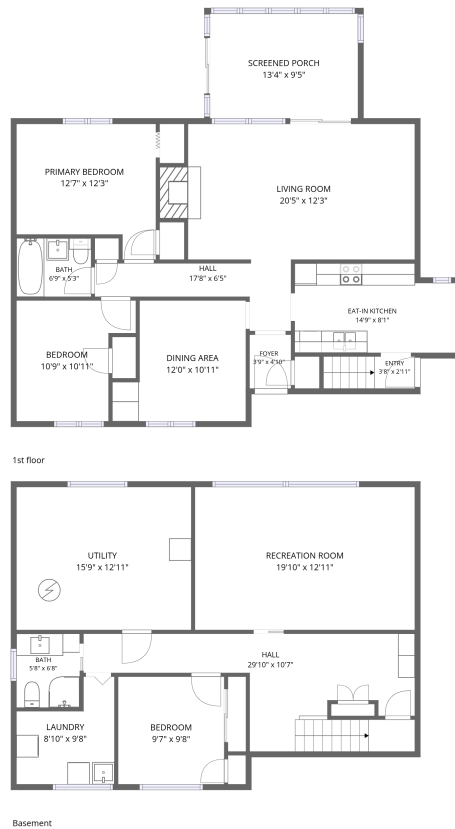


## Home data report

# 1497 Mayfair Ave, Peterborough, ON, CA



**Total Area: 1655 sq. ft**

Basement: 714 sq. ft, 1st Floor: 941 sq. ft

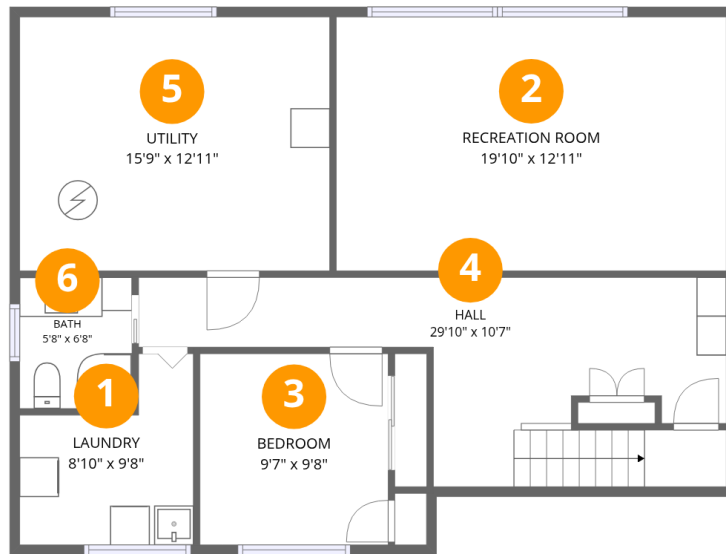
Excluded: Utility 203 sq. ft, Screened porch 126 sq. ft, Walls: 148 sq. ft

## Property summary

 **2** Floors

 **3** Bedrooms

 **2** Bathrooms



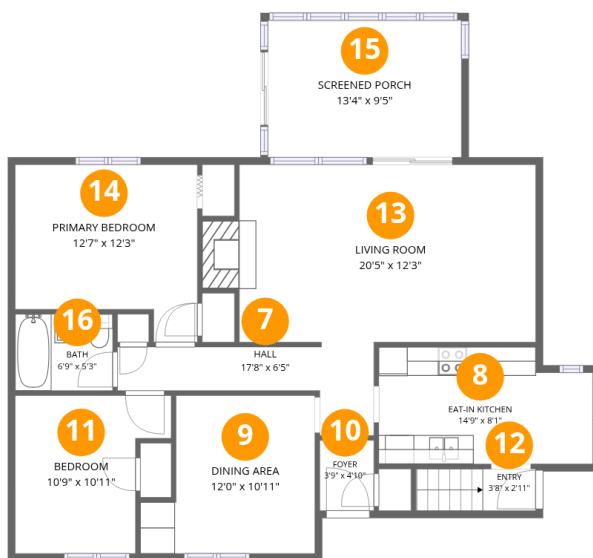
## Room dimensions

Floor 1 Below grade

Total: 714 sqft

Excluded: 203 sqft

#		Dimensions	sqft	Counted as living area
1	Laundry	8'10" x 9'8"	67 sq. ft	Yes
2	Recreation Room	19'10" x 12'11"	255 sq. ft	Yes
3	Bedroom	9'7" x 9'8"	93 sq. ft	Yes
4	Hall	29'10" x 10'7"	190 sq. ft	Yes
5	Utility	15'9" x 12'11"	203 sq. ft	No
6	Bath	5'8" x 6'8"	38 sq. ft	Yes



## Room dimensions

Floor 2

Total:941sqft Excluded: 126sqft

#		Dimensions	sqft	Counted as living area
7	Hall	17'8" x 6'5"	66 sq. ft	Yes
8	Eat-in Kitchen	14'9" x 8'1"	112 sq. ft	Yes
9	Dining Area	12'0" x 10'11"	113 sq. ft	Yes
10	Foyer	3'9" x 4'10"	18 sq. ft	Yes
11	Bedroom	10'9" x 10'11"	98 sq. ft	Yes
12	Entry	3'8" x 2'11"	24 sq. ft	Yes
13	Living Room	20'5" x 12'3"	262 sq. ft	Yes
14	Primary Bedroom	12'7" x 12'3"	132 sq. ft	Yes
15	Screened Porch	13'4" x 9'5"	126 sq. ft	No
16	Bath	6'9" x 5'3"	35 sq. ft	Yes

## 1 Floor 1 - Laundry



Dimensions: 8'10" x 9'8"  
Area: 67 sq. ft  
Counted as living area: Yes

Heated: Yes  
Finished: Yes  
Enclosed: Yes  
Contiguous: Yes  
Permitted: Yes  
Wet space: No  
Addition: No  
Conversion: No

## 2 Floor 1 - Recreation Room



Dimensions: 19'10" x 12'11"  
Area: 255 sq. ft  
Counted as living area: Yes

Heated: Yes  
Finished: Yes  
Enclosed: Yes  
Contiguous: Yes  
Permitted: Yes  
Wet space: No  
Addition: No  
Conversion: No

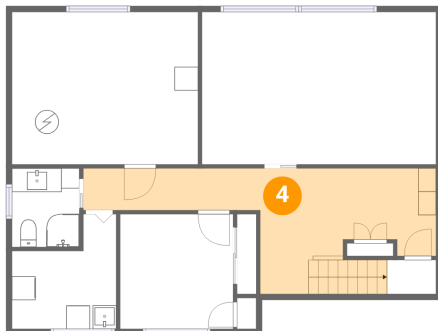
**3** Floor 1 - Bedroom



Dimensions: 9'7" x 9'8"  
Area: 93 sq. ft  
Counted as living area: Yes

Heated: Yes  
Finished: Yes  
Enclosed: Yes  
Contiguous: Yes  
Permitted: Yes  
Wet space: No  
Addition: No  
Conversion: No

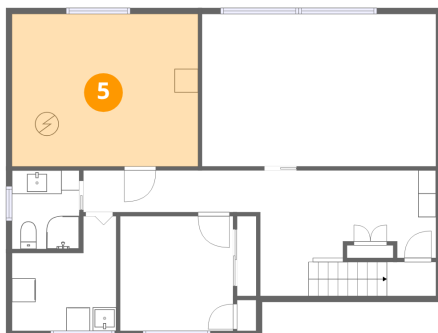
**4** Floor 1 - Hall



Dimensions: 29'10" x 10'7"  
Area: 190 sq. ft  
Counted as living area: Yes

Heated: Yes  
Finished: Yes  
Enclosed: Yes  
Contiguous: Yes  
Permitted: Yes  
Wet space: No  
Addition: No  
Conversion: No

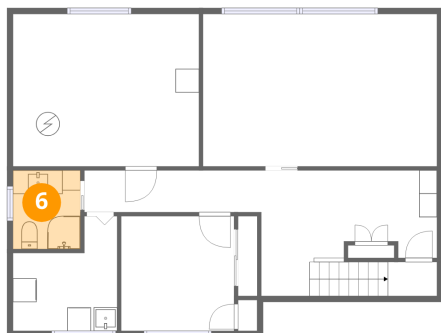
**5** Floor 1 - Utility



Dimensions: 15'9" x 12'11"  
Area: 203 sq. ft  
Counted as living area: No

Heated: Yes  
Finished: No  
Enclosed: Yes  
Contiguous: Yes  
Permitted: Yes  
Wet space: No  
Addition: No  
Conversion: No

### 6 Floor 1 - Bath



Dimensions: 5'8" x 6'8"  
Area: 38 sq. ft  
Counted as living area: Yes

Heated: Yes  
Finished: Yes  
Enclosed: Yes  
Contiguous: Yes  
Permitted: Yes  
Wet space: Yes  
Addition: No  
Conversion: No

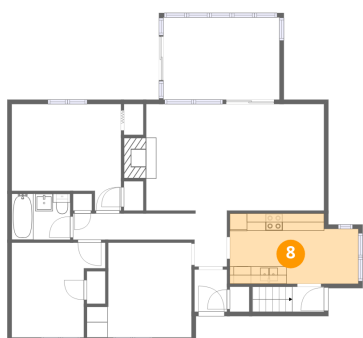
### 7 Floor 2 - Hall



Dimensions: 17'8" x 6'5"  
Area: 66 sq. ft  
Counted as living area: Yes

Heated: Yes  
Finished: Yes  
Enclosed: Yes  
Contiguous: Yes  
Permitted: Yes  
Wet space: No  
Addition: No  
Conversion: No

### 8 Floor 2 - Eat-in Kitchen



Dimensions: 14'9" x 8'1"  
Area: 112 sq. ft  
Counted as living area: Yes

Heated: Yes  
Finished: Yes  
Enclosed: Yes  
Contiguous: Yes  
Permitted: Yes  
Wet space: No  
Addition: No  
Conversion: No

## 9 Floor 2 - Dining Area



Dimensions: 12'0" x 10'11"  
Area: 113 sq. ft  
Counted as living area: Yes

Heated: Yes  
Finished: Yes  
Enclosed: Yes  
Contiguous: Yes  
Permitted: Yes  
Wet space: No  
Addition: No  
Conversion: No

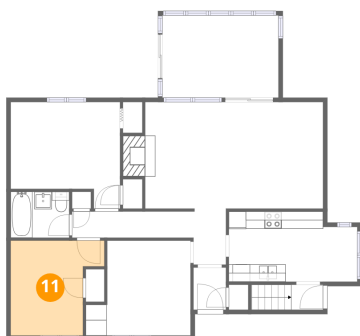
## 10 Floor 2 - Foyer



Dimensions: 3'9" x 4'10"  
Area: 18 sq. ft  
Counted as living area: Yes

Heated: Yes  
Finished: Yes  
Enclosed: Yes  
Contiguous: Yes  
Permitted: Yes  
Wet space: No  
Addition: No  
Conversion: No

## 11 Floor 2 - Bedroom



Dimensions: 10'9" x 10'11"  
Area: 98 sq. ft  
Counted as living area: Yes

Heated: Yes  
Finished: Yes  
Enclosed: Yes  
Contiguous: Yes  
Permitted: Yes  
Wet space: No  
Addition: No  
Conversion: No

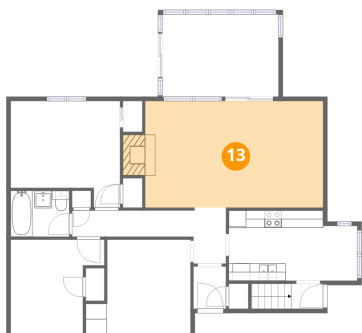
## 12 Floor 2 - Entry



Dimensions: 3'8" x 2'11"  
Area: 24 sq. ft  
Counted as living area: Yes

Heated: Yes  
Finished: Yes  
Enclosed: Yes  
Contiguous: Yes  
Permitted: Yes  
Wet space: No  
Addition: No  
Conversion: No

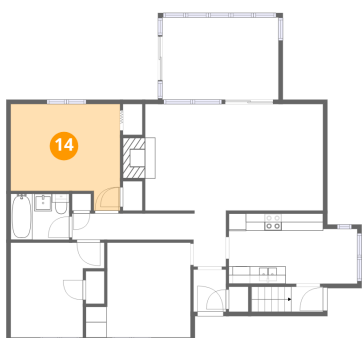
## 13 Floor 2 - Living Room



Dimensions: 20'5" x 12'3"  
Area: 262 sq. ft  
Counted as living area: Yes

Heated: Yes  
Finished: Yes  
Enclosed: Yes  
Contiguous: Yes  
Permitted: Yes  
Wet space: No  
Addition: No  
Conversion: No

## 14 Floor 2 - Primary Bedroom



Dimensions: 12'7" x 12'3"  
Area: 132 sq. ft  
Counted as living area: Yes

Heated: Yes  
Finished: Yes  
Enclosed: Yes  
Contiguous: Yes  
Permitted: Yes  
Wet space: No  
Addition: No  
Conversion: No

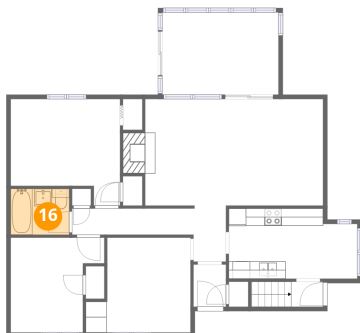
## 15 Floor 2 - Screened Porch



Dimensions: 13'4" x 9'5"  
Area: 126 sq. ft  
Counted as living area: No

Heated: No  
Finished: No  
Enclosed: No  
Contiguous: Yes  
Permitted: Yes  
Wet space: No  
Addition: No  
Conversion: No

## 16 Floor 2 - Bath



Dimensions: 6'9" x 5'3"  
Area: 35 sq. ft  
Counted as living area: Yes

Heated: Yes  
Finished: Yes  
Enclosed: Yes  
Contiguous: Yes  
Permitted: Yes  
Wet space: Yes  
Addition: No  
Conversion: No