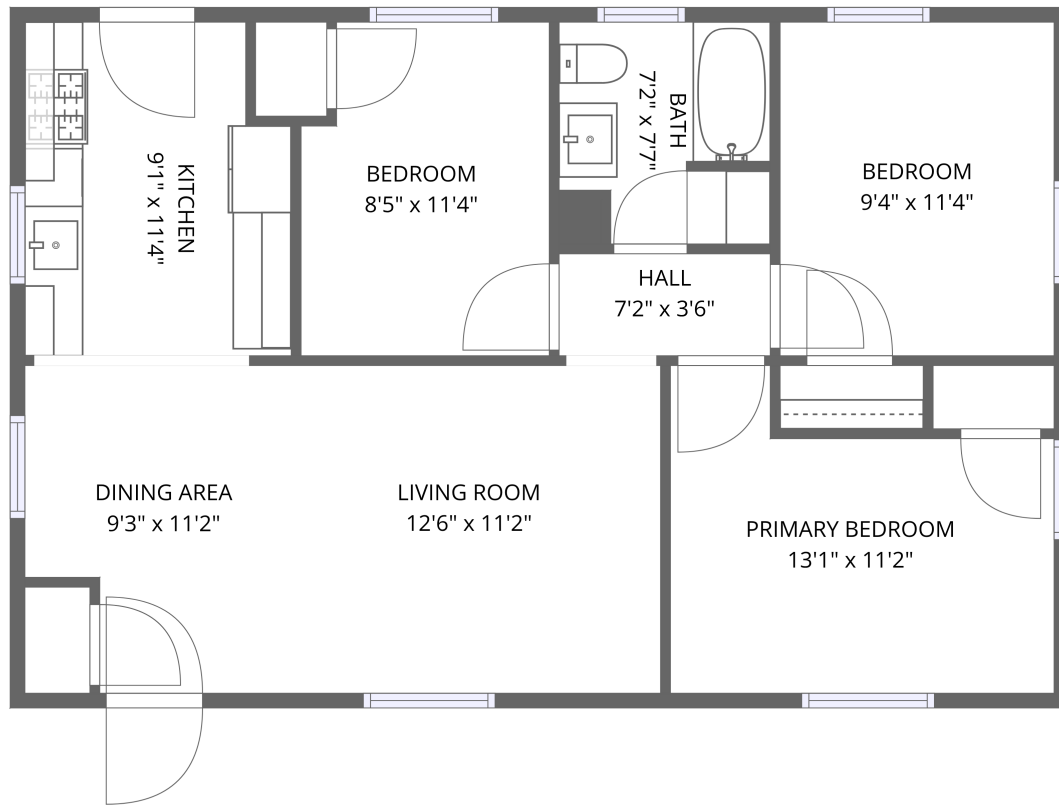


Home data report

1010 Crafton Lane, Green Park, Richmond, Richmond city,
Virginia, United States, 23222



1st floor

Total Area: 803 sq. ft


1st Floor: 803 sq. ft

Excluded: Walls: 59 sq. ft

Property summary

 **1** Floors

 **3** Bedrooms

 **1** Bathrooms

Home data report

1010 Crafton Lane, Green Park, Richmond, Richmond city, Virginia, United States, 23222



Room dimensions

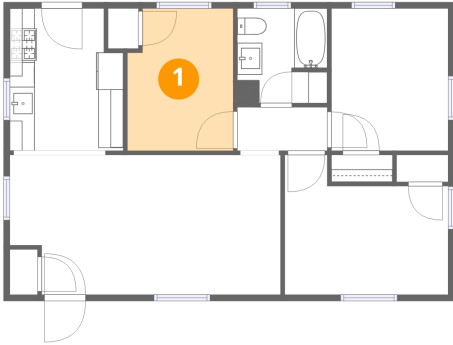
Floor 1

Total:803sqft Excluded: 0sqft

#		Dimensions	sqft	Counted as living area
1	Bedroom	8'5" x 11'4"	95 sq. ft	Yes
2	Living Room	12'6" x 11'2"	139 sq. ft	Yes
3	Bedroom	9'4" x 11'4"	106 sq. ft	Yes
4	Dining Area	9'3" x 11'2"	103 sq. ft	Yes
5	Kitchen	9'1" x 11'4"	103 sq. ft	Yes
6	Bath	7'2" x 7'7"	55 sq. ft	Yes
7	Hall	7'2" x 3'6"	25 sq. ft	Yes
8	Primary Bedroom	13'1" x 11'2"	146 sq. ft	Yes

1010 Crafton Lane, Green Park, Richmond, Richmond city,
Virginia, United States, 23222

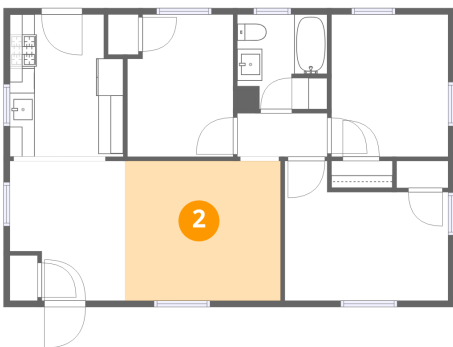
1 Floor 1 - Bedroom



Dimensions: 8'5" x 11'4"
Area: 95 sq. ft
Counted as living area: Yes

Heated: Yes
Finished: Yes
Enclosed: Yes
Contiguous: Yes
Permitted: Yes
Wet space: No
Addition: No
Conversion: No

2 Floor 1 - Living Room

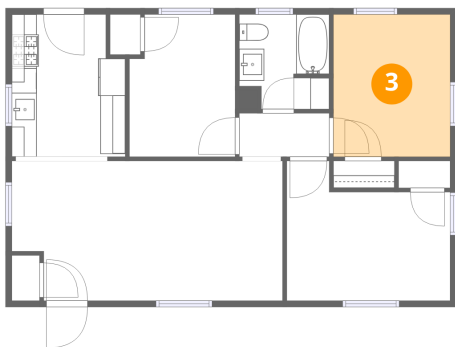


Dimensions: 12'6" x 11'2"
Area: 139 sq. ft
Counted as living area: Yes

Heated: Yes
Finished: Yes
Enclosed: Yes
Contiguous: Yes
Permitted: Yes
Wet space: No
Addition: No
Conversion: No

1010 Crafton Lane, Green Park, Richmond, Richmond city,
Virginia, United States, 23222

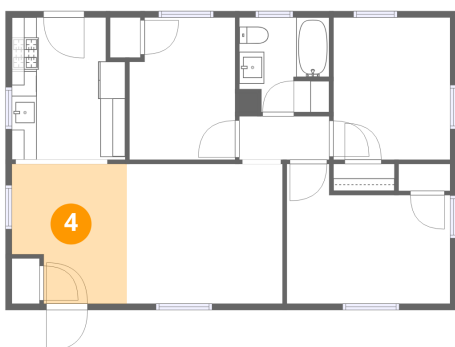
3 Floor 1 - Bedroom



Dimensions: 9'4" x 11'4"
Area: 106 sq. ft
Counted as living area: Yes

Heated: Yes
Finished: Yes
Enclosed: Yes
Contiguous: Yes
Permitted: Yes
Wet space: No
Addition: No
Conversion: No

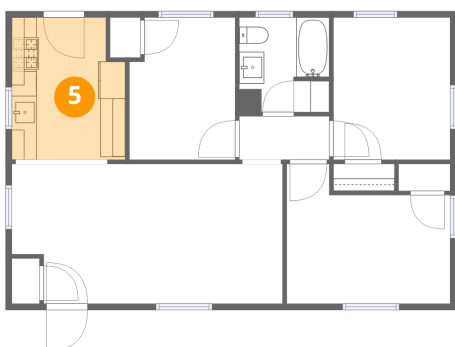
4 Floor 1 - Dining Area



Dimensions: 9'3" x 11'2"
Area: 103 sq. ft
Counted as living area: Yes

Heated: Yes
Finished: Yes
Enclosed: Yes
Contiguous: Yes
Permitted: Yes
Wet space: No
Addition: No
Conversion: No

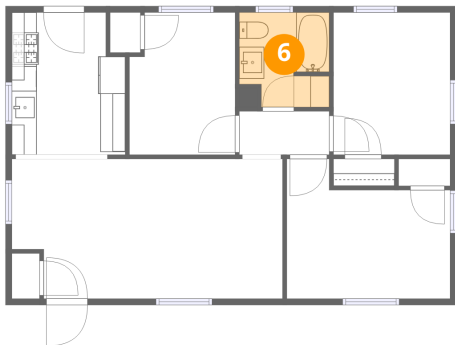
5 Floor 1 - Kitchen



Dimensions: 9'1" x 11'4"
Area: 103 sq. ft
Counted as living area: Yes

Heated: Yes
Finished: Yes
Enclosed: Yes
Contiguous: Yes
Permitted: Yes
Wet space: No
Addition: No
Conversion: No

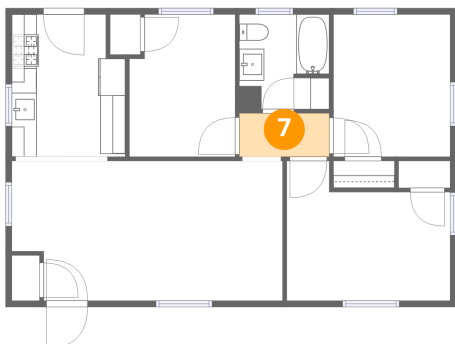
6 Floor 1 - Bath



Dimensions: 7'2" x 7'7"
Area: 55 sq. ft
Counted as living area: Yes

Heated: Yes
Finished: Yes
Enclosed: Yes
Contiguous: Yes
Permitted: Yes
Wet space: Yes
Addition: No
Conversion: No

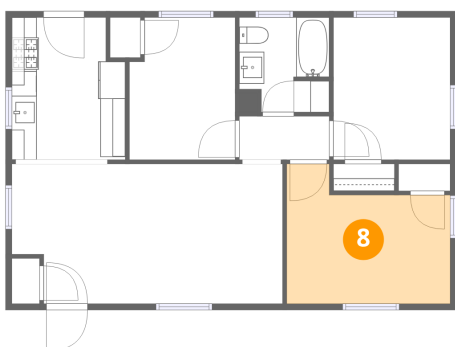
7 Floor 1 - Hall



Dimensions: 7'2" x 3'6"
Area: 25 sq. ft
Counted as living area: Yes

Heated: Yes
Finished: Yes
Enclosed: Yes
Contiguous: Yes
Permitted: Yes
Wet space: No
Addition: No
Conversion: No

8 Floor 1 - Primary Bedroom



Dimensions: 13'1" x 11'2"
Area: 146 sq. ft
Counted as living area: Yes

Heated: Yes
Finished: Yes
Enclosed: Yes
Contiguous: Yes
Permitted: Yes
Wet space: No
Addition: No
Conversion: No