




Total Area: 2019 sq. ft

Basement: 442 sq. ft, 1st Floor: 807 sq. ft, 2nd Floor: 770 sq. ft, 3rd Floor: 0 sq. ft

Excluded: Utility 70 sq. ft, Low ceiling 474 sq. ft, Basement 260 sq. ft, Porch 170 sq. ft, Deck 224 sq. ft, Patio 384 sq. ft, Attic 331 sq. ft, Walls: 240 sq. ft

Property summary

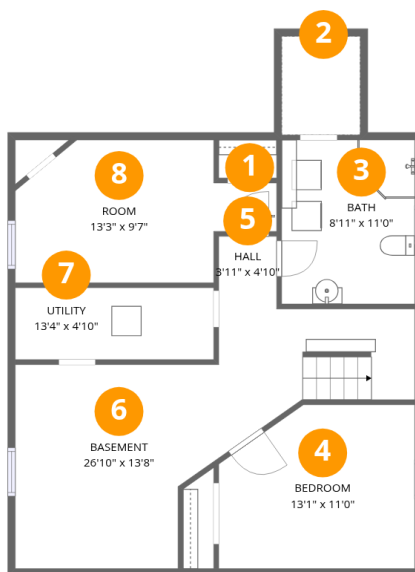
 **4** Floors

 **4** Bedrooms

 **2** Bathrooms

 **1** Half baths

807 Fulton St, Grand Mound, IA, US



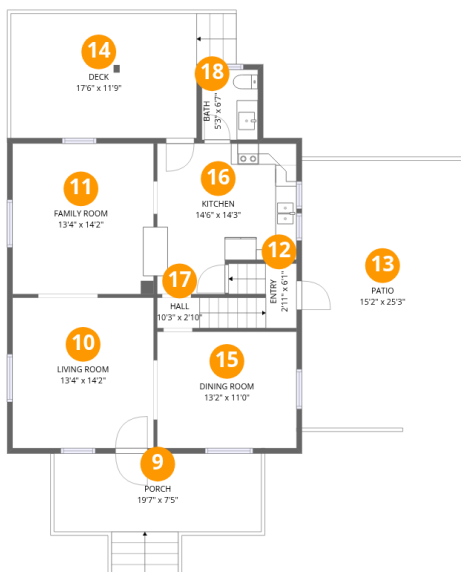
Room dimensions

Floor 1 Below grade

Total: 442 sqft

Excluded: 365 sqft

| # | | Dimensions | sqft | Counted as living area |
|---|-------------|----------------|------------|------------------------|
| 1 | Hall | 4'3" x 3'3" | 14 sq. ft | Yes |
| 2 | Crawl Space | 5'3" x 6'7" | 35 sq. ft | No |
| 3 | Bath | 8'11" x 11'0" | 98 sq. ft | Yes |
| 4 | Bedroom | 13'1" x 11'0" | 133 sq. ft | Yes |
| 5 | Hall | 3'11" x 4'10" | 19 sq. ft | Yes |
| 6 | Basement | 26'10" x 13'8" | 260 sq. ft | No |
| 7 | Utility | 13'4" x 4'10" | 64 sq. ft | No |
| 8 | Room | 13'3" x 9'7" | 120 sq. ft | Yes |



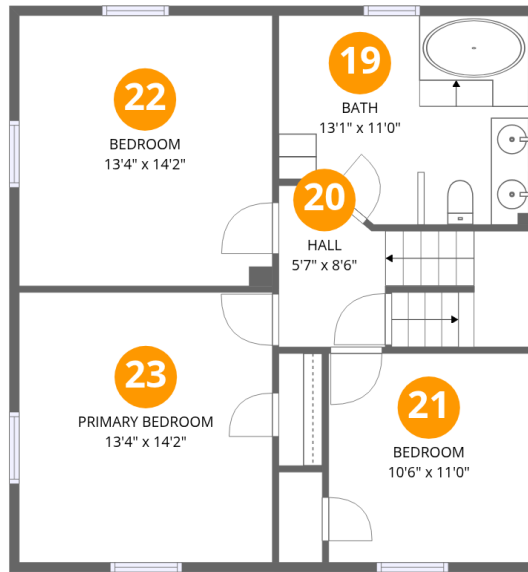
Room dimensions

Floor 2

Total:807sqft

Excluded: 778sqft

| # | | Dimensions | sqft | Counted as living area |
|----|-------------|---------------|------------|------------------------|
| 9 | Porch | 19'7" x 7'5" | 170 sq. ft | No |
| 10 | Living Room | 13'4" x 14'2" | 189 sq. ft | Yes |
| 11 | Family Room | 13'4" x 14'2" | 185 sq. ft | Yes |
| 12 | Entry | 2'11" x 6'1" | 28 sq. ft | Yes |
| 13 | Patio | 15'2" x 25'3" | 384 sq. ft | No |
| 14 | Deck | 17'6" x 11'9" | 224 sq. ft | No |
| 15 | Dining Room | 13'2" x 11'0" | 144 sq. ft | Yes |
| 16 | Kitchen | 14'6" x 14'3" | 171 sq. ft | Yes |
| 17 | Hall | 10'3" x 2'10" | 29 sq. ft | Yes |
| 18 | Bath | 5'3" x 6'7" | 35 sq. ft | Yes |



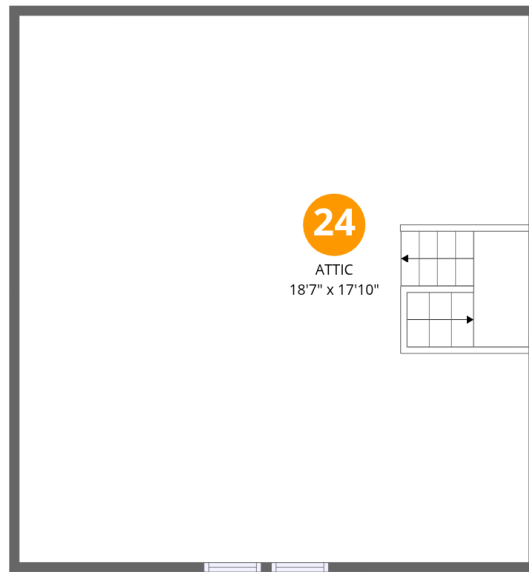
Room dimensions

Floor 3

Total: 770 sqft

Excluded: 0 sqft

| # | | Dimensions | sqft | Counted as living area |
|----|-----------------|---------------|------------|------------------------|
| 19 | Bath | 13'1" x 11'0" | 136 sq. ft | Yes |
| 20 | Hall | 5'7" x 8'6" | 86 sq. ft | Yes |
| 21 | Bedroom | 10'6" x 11'0" | 116 sq. ft | Yes |
| 22 | Bedroom | 13'4" x 14'2" | 189 sq. ft | Yes |
| 23 | Primary Bedroom | 13'4" x 14'2" | 189 sq. ft | Yes |



Room dimensions

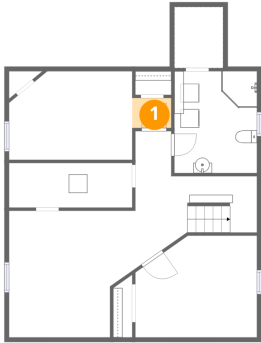
Floor 4

Total: 0sqft

Excluded: 770sqft

| # | | Dimensions | sqft | Counted as living area |
|----|-------|----------------|------------|------------------------|
| 24 | Attic | 18'7" x 17'10" | 331 sq. ft | No |

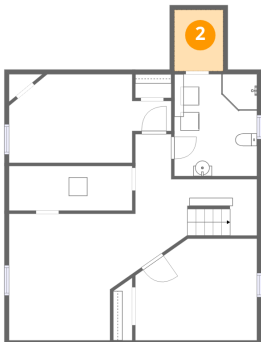
1 Floor 1 - Hall



Dimensions: 4'3" x 3'3"
Area: 14 sq. ft
Counted as living area: Yes

Heated: Yes
Finished: Yes
Enclosed: Yes
Contiguous: Yes
Permitted: Yes
Wet space: No
Addition: No
Conversion: No

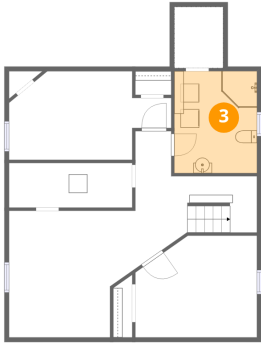
2 Floor 1 - Crawl Space



Dimensions: 5'3" x 6'7"
Area: 35 sq. ft
Counted as living area: No

Heated: No
Finished: No
Enclosed: No
Contiguous: Yes
Permitted: No
Wet space: No
Addition: No
Conversion: No

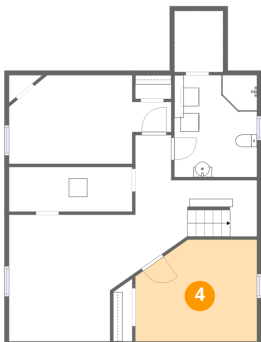
3 Floor 1 - Bath



Dimensions: 8'11" x 11'0"
Area: 98 sq. ft
Counted as living area: Yes

Heated: Yes
Finished: Yes
Enclosed: Yes
Contiguous: Yes
Permitted: Yes
Wet space: Yes
Addition: No
Conversion: No

4 Floor 1 - Bedroom



Dimensions: 13'1" x 11'0"
Area: 133 sq. ft
Counted as living area: No

Heated: Yes
Finished: Yes
Enclosed: Yes
Contiguous: No
Permitted: Yes
Wet space: No
Addition: No
Conversion: No

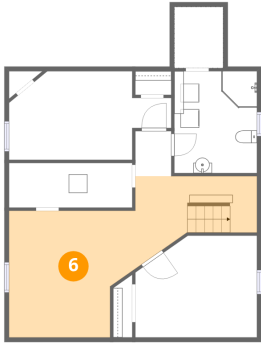
5 Floor 1 - Hall



Dimensions: 3'11" x 4'10"
Area: 19 sq. ft
Counted as living area: Yes

Heated: Yes
Finished: Yes
Enclosed: Yes
Contiguous: Yes
Permitted: Yes
Wet space: No
Addition: No
Conversion: No

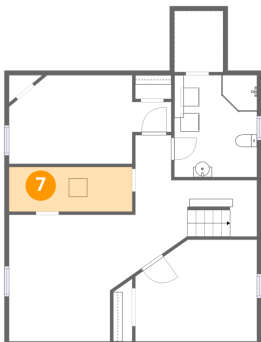
6 Floor 1 - Basement



Dimensions: 26'10" x 13'8"
Area: 260 sq. ft
Counted as living area: No

Heated: Yes
Finished: No
Enclosed: Yes
Contiguous: Yes
Permitted: Yes
Wet space: No
Addition: No
Conversion: No

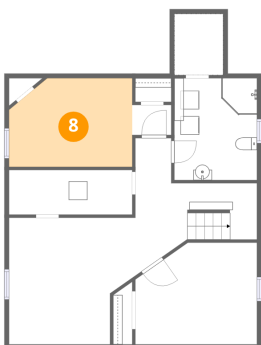
7 Floor 1 - Utility



Dimensions: 13'4" x 4'10"
Area: 64 sq. ft
Counted as living area: No

Heated: Yes
Finished: No
Enclosed: Yes
Contiguous: Yes
Permitted: Yes
Wet space: No
Addition: No
Conversion: No

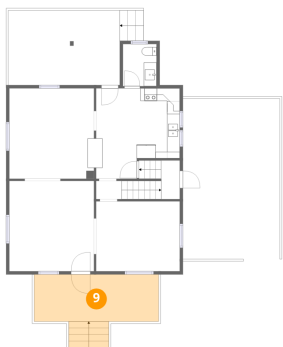
8 Floor 1 - Room



Dimensions: 13'3" x 9'7"
Area: 120 sq. ft
Counted as living area: Yes

Heated: Yes
Finished: Yes
Enclosed: Yes
Contiguous: Yes
Permitted: Yes
Wet space: No
Addition: No
Conversion: No

9 Floor 2 - Porch



Dimensions: 19'7" x 7'5"
Area: 170 sq. ft
Counted as living area: No

Heated: No
Finished: No
Enclosed: No
Contiguous: Yes
Permitted: Yes
Wet space: No
Addition: No
Conversion: No

10 Floor 2 - Living Room



Dimensions: 13'4" x 14'2"
Area: 189 sq. ft
Counted as living area: Yes

Heated: Yes
Finished: Yes
Enclosed: Yes
Contiguous: Yes
Permitted: Yes
Wet space: No
Addition: No
Conversion: No

11 Floor 2 - Family Room



Dimensions: 13'4" x 14'2"
Area: 185 sq. ft
Counted as living area: Yes

Heated: Yes
Finished: Yes
Enclosed: Yes
Contiguous: Yes
Permitted: Yes
Wet space: No
Addition: No
Conversion: No

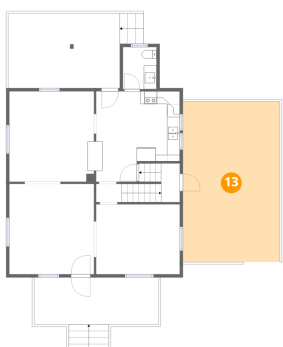
12 Floor 2 - Entry



Dimensions: 2'11" x 6'1"
Area: 28 sq. ft
Counted as living area: Yes

Heated: Yes
Finished: Yes
Enclosed: Yes
Contiguous: Yes
Permitted: Yes
Wet space: No
Addition: No
Conversion: No

13 Floor 2 - Patio



Dimensions: 15'2" x 25'3"
Area: 384 sq. ft
Counted as living area: No

Heated: No
Finished: No
Enclosed: No
Contiguous: Yes
Permitted: Yes
Wet space: No
Addition: No
Conversion: No

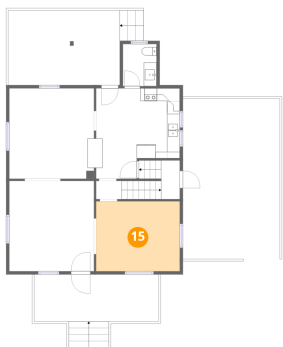
14 Floor 2 - Deck



Dimensions: 17'6" x 11'9"
Area: 224 sq. ft
Counted as living area: No

Heated: No
Finished: No
Enclosed: No
Contiguous: Yes
Permitted: Yes
Wet space: No
Addition: No
Conversion: No

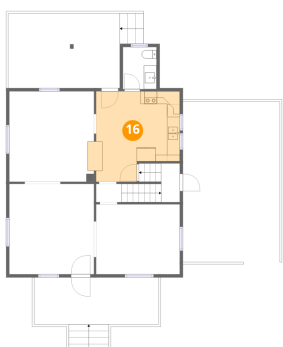
15 Floor 2 - Dining Room



Dimensions: 13'2" x 11'0"
Area: 144 sq. ft
Counted as living area: Yes

Heated: Yes
Finished: Yes
Enclosed: Yes
Contiguous: Yes
Permitted: Yes
Wet space: No
Addition: No
Conversion: No

16 Floor 2 - Kitchen



Dimensions: 14'6" x 14'3"
Area: 171 sq. ft
Counted as living area: Yes

Heated: Yes
Finished: Yes
Enclosed: Yes
Contiguous: Yes
Permitted: Yes
Wet space: No
Addition: No
Conversion: No

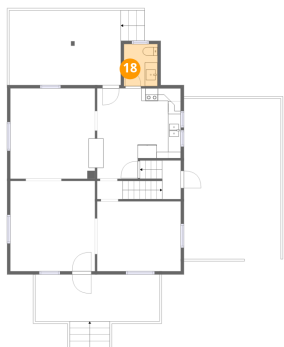
17 Floor 2 - Hall



Dimensions: 10'3" x 2'10"
Area: 29 sq. ft
Counted as living area: Yes

Heated: Yes
Finished: Yes
Enclosed: Yes
Contiguous: Yes
Permitted: Yes
Wet space: No
Addition: No
Conversion: No

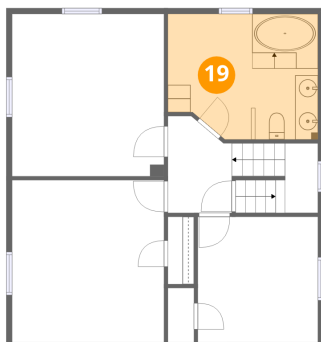
18 Floor 2 - Bath



Dimensions: 5'3" x 6'7"
Area: 35 sq. ft
Counted as living area: Yes

Heated: Yes
Finished: Yes
Enclosed: Yes
Contiguous: Yes
Permitted: Yes
Wet space: Yes
Addition: No
Conversion: No

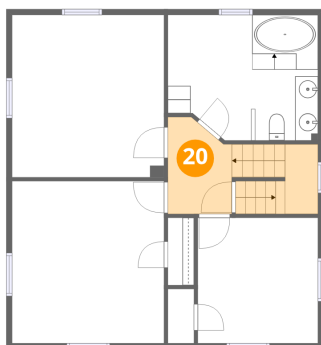
19 Floor 3 - Bath



Dimensions: 13'1" x 11'0"
Area: 136 sq. ft
Counted as living area: Yes

Heated: Yes
Finished: Yes
Enclosed: Yes
Contiguous: Yes
Permitted: Yes
Wet space: Yes
Addition: No
Conversion: No

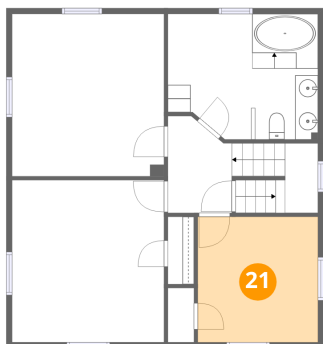
20 Floor 3 - Hall



Dimensions: 5'7" x 8'6"
Area: 86 sq. ft
Counted as living area: Yes

Heated: Yes
Finished: Yes
Enclosed: Yes
Contiguous: Yes
Permitted: Yes
Wet space: No
Addition: No
Conversion: No

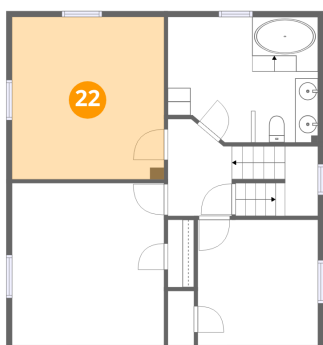
21 Floor 3 - Bedroom



Dimensions: 10'6" x 11'0"
Area: 116 sq. ft
Counted as living area: Yes

Heated: Yes
Finished: Yes
Enclosed: Yes
Contiguous: Yes
Permitted: Yes
Wet space: No
Addition: No
Conversion: No

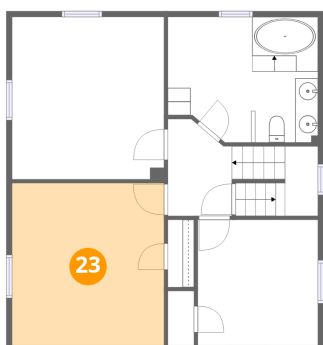
22 Floor 3 - Bedroom



Dimensions: 13'4" x 14'2"
Area: 189 sq. ft
Counted as living area: Yes

Heated: Yes
Finished: Yes
Enclosed: Yes
Contiguous: Yes
Permitted: Yes
Wet space: No
Addition: No
Conversion: No

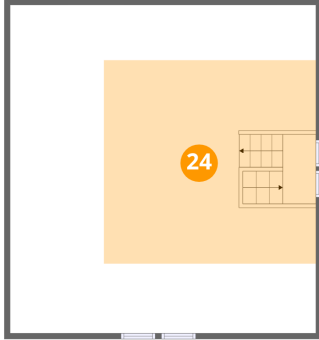
23 Floor 3 - Primary Bedroom



Dimensions: 13'4" x 14'2"
Area: 189 sq. ft
Counted as living area: Yes

Heated: Yes
Finished: Yes
Enclosed: Yes
Contiguous: Yes
Permitted: Yes
Wet space: No
Addition: No
Conversion: No

24 Floor 4 - Attic



Dimensions: 18'7" x 17'10"
Area: 331 sq. ft
Counted as living area: No

Heated: No
Finished: No
Enclosed: Yes
Contiguous: Yes
Permitted: Yes
Wet space: No
Addition: No
Conversion: No