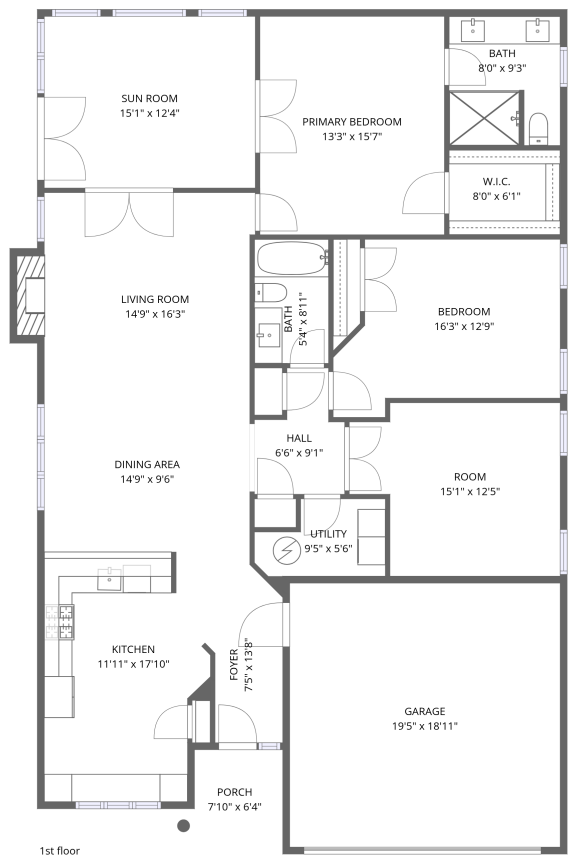


Home data report

4530 Colonial Place Drive, Eton Hill, Cave Spring, Roanoke,
Roanoke County, Virginia, United States, 24018



Total Area: 1734 sq. ft

1st Floor: 1734 sq. ft


Excluded: Porch 43 sq. ft, Garage 367 sq. ft, Fireplace 13 sq. ft, Walls: 114 sq. ft

Property summary

 **1** Floors

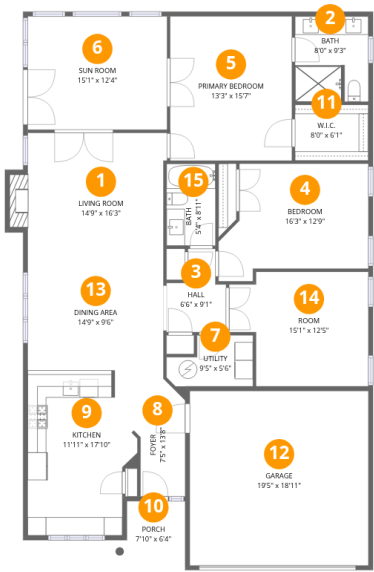
 **2** Bedrooms

 **2** Bathrooms

 **1** Garages

Home data report

4530 Colonial Place Drive, Eton Hill, Cave Spring, Roanoke,
Roanoke County, Virginia, United States, 24018



Room dimensions

Floor 1 Total:1734sqft Excluded: 423sqft

#		Dimensions	sqft	Counted as living area
1	Living Room	14'9" x 16'3"	252 sq. ft	Yes
2	Bath	8'0" x 9'3"	72 sq. ft	Yes
3	Hall	6'6" x 9'1"	45 sq. ft	Yes
4	Bedroom	16'3" x 12'9"	174 sq. ft	Yes
5	Primary Bedroom	13'3" x 15'7"	207 sq. ft	Yes
6	Sun Room	15'1" x 12'4"	186 sq. ft	Yes
7	Utility	9'5" x 5'6"	44 sq. ft	Yes
8	Foyer	7'5" x 13'8"	77 sq. ft	Yes
9	Kitchen	11'11" x 17'10"	186 sq. ft	Yes
10	Porch	7'10" x 6'4"	43 sq. ft	No
11	W.I.C.	8'0" x 6'1"	48 sq. ft	Yes

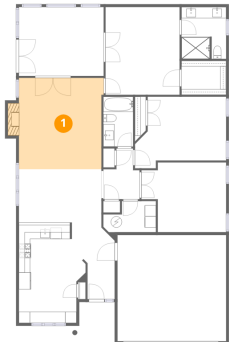
Home data report

**4530 Colonial Place Drive, Eton Hill, Cave Spring, Roanoke,
Roanoke County, Virginia, United States, 24018**

#		Dimensions	sqft	Counted as living area
12	Garage	19'5" x 18'11"	367 sq. ft	No
13	Dining Area	14'9" x 9'6"	140 sq. ft	Yes
14	Room	15'1" x 12'5"	167 sq. ft	Yes
15	Bath	5'4" x 8'11"	47 sq. ft	Yes

4530 Colonial Place Drive, Eton Hill, Cave Spring, Roanoke,
Roanoke County, Virginia, United States, 24018

1 Floor 1 - Living Room



Dimensions: 14'9" x 16'3"
Area: 252 sq. ft
Counted as living area: Yes

Heated: Yes
Finished: Yes
Enclosed: Yes
Contiguous: Yes
Permitted: Yes
Wet space: No
Addition: No
Conversion: No

2 Floor 1 - Bath



Dimensions: 8'0" x 9'3"
Area: 72 sq. ft
Counted as living area: Yes

Heated: Yes
Finished: Yes
Enclosed: Yes
Contiguous: Yes
Permitted: Yes
Wet space: Yes
Addition: No
Conversion: No

3 Floor 1 - Hall



Dimensions: 6'6" x 9'1"
Area: 45 sq. ft
Counted as living area: Yes

Heated: Yes
Finished: Yes
Enclosed: Yes
Contiguous: Yes
Permitted: Yes
Wet space: No
Addition: No
Conversion: No

4 Floor 1 - Bedroom



Dimensions: 16'3" x 12'9"
Area: 174 sq. ft
Counted as living area: Yes

Heated: Yes
Finished: Yes
Enclosed: Yes
Contiguous: Yes
Permitted: Yes
Wet space: No
Addition: No
Conversion: No

5 Floor 1 - Primary Bedroom



Dimensions: 13'3" x 15'7"
Area: 207 sq. ft
Counted as living area: Yes

Heated: Yes
Finished: Yes
Enclosed: Yes
Contiguous: Yes
Permitted: Yes
Wet space: No
Addition: No
Conversion: No

4530 Colonial Place Drive, Eton Hill, Cave Spring, Roanoke,
Roanoke County, Virginia, United States, 24018

6 Floor 1 - Sun Room



Dimensions: 15'1" x 12'4"
Area: 186 sq. ft
Counted as living area: Yes

Heated: Yes
Finished: Yes
Enclosed: Yes
Contiguous: Yes
Permitted: Yes
Wet space: No
Addition: No
Conversion: No

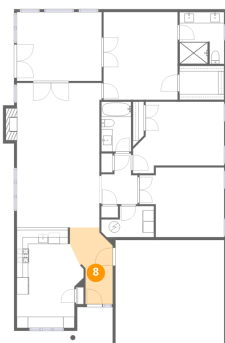
7 Floor 1 - Utility



Dimensions: 9'5" x 5'6"
Area: 44 sq. ft
Counted as living area: Yes

Heated: Yes
Finished: Yes
Enclosed: Yes
Contiguous: Yes
Permitted: Yes
Wet space: No
Addition: No
Conversion: No

8 Floor 1 - Foyer

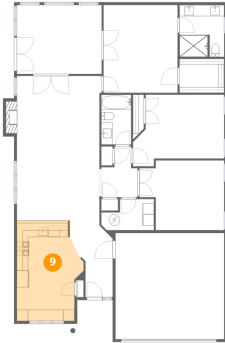


Dimensions: 7'5" x 13'8"
Area: 77 sq. ft
Counted as living area: Yes

Heated: Yes
Finished: Yes
Enclosed: Yes
Contiguous: Yes
Permitted: Yes
Wet space: No
Addition: No
Conversion: No

4530 Colonial Place Drive, Eton Hill, Cave Spring, Roanoke,
Roanoke County, Virginia, United States, 24018

9 Floor 1 - Kitchen



Dimensions: 11'11" x 17'10"
Area: 186 sq. ft
Counted as living area: Yes

Heated: Yes
Finished: Yes
Enclosed: Yes
Contiguous: Yes
Permitted: Yes
Wet space: No
Addition: No
Conversion: No

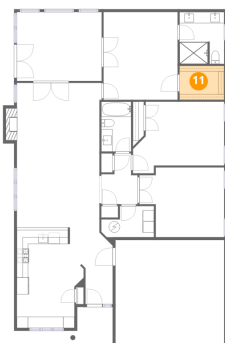
10 Floor 1 - Porch



Dimensions: 7'10" x 6'4"
Area: 43 sq. ft
Counted as living area: No

Heated: No
Finished: No
Enclosed: No
Contiguous: Yes
Permitted: Yes
Wet space: No
Addition: No
Conversion: No

11 Floor 1 - W.I.C.

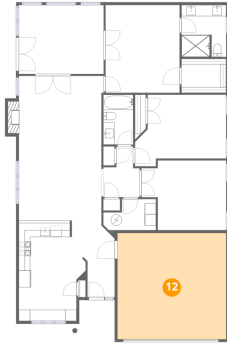


Dimensions: 8'0" x 6'1"
Area: 48 sq. ft
Counted as living area: Yes

Heated: Yes
Finished: Yes
Enclosed: Yes
Contiguous: Yes
Permitted: Yes
Wet space: No
Addition: No
Conversion: No

4530 Colonial Place Drive, Eton Hill, Cave Spring, Roanoke,
Roanoke County, Virginia, United States, 24018

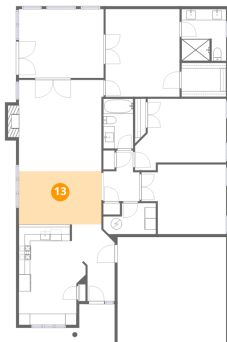
12 Floor 1 - Garage



Dimensions: 19'5" x 18'11"
Area: 367 sq. ft
Counted as living area: No

Heated: No
Finished: No
Enclosed: Yes
Contiguous: Yes
Permitted: Yes
Wet space: No
Addition: No
Conversion: No

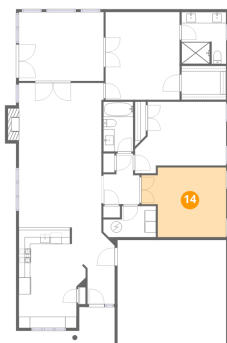
13 Floor 1 - Dining Area



Dimensions: 14'9" x 9'6"
Area: 140 sq. ft
Counted as living area: Yes

Heated: Yes
Finished: Yes
Enclosed: Yes
Contiguous: Yes
Permitted: Yes
Wet space: No
Addition: No
Conversion: No

14 Floor 1 - Room

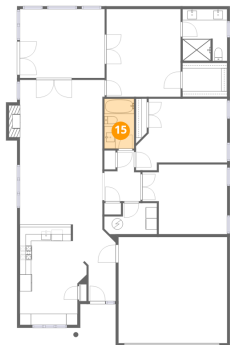


Dimensions: 15'1" x 12'5"
Area: 167 sq. ft
Counted as living area: Yes

Heated: Yes
Finished: Yes
Enclosed: Yes
Contiguous: Yes
Permitted: Yes
Wet space: No
Addition: No
Conversion: No

4530 Colonial Place Drive, Eton Hill, Cave Spring, Roanoke,
Roanoke County, Virginia, United States, 24018

15 Floor 1 - Bath



Dimensions: 5'4" x 8'11"
Area: 47 sq. ft
Counted as living area: Yes

Heated: Yes
Finished: Yes
Enclosed: Yes
Contiguous: Yes
Permitted: Yes
Wet space: Yes
Addition: No
Conversion: No