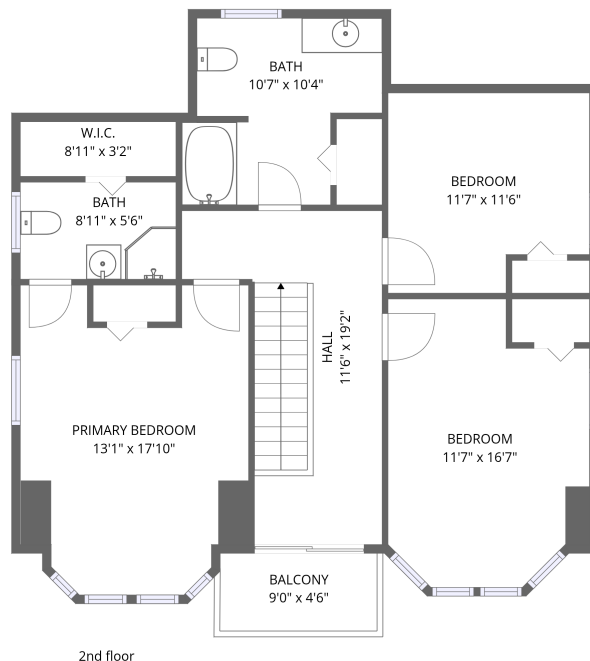


Home data report

25 School Street, Ellsworth, Hancock County, Maine, United States, 04605



Total Area: 1929 sq. ft

1st Floor: 1007 sq. ft, 2nd Floor: 922 sq. ft

Excluded: Deck 276 sq. ft, Balcony 40 sq. ft, Walls: 135 sq. ft

Property summary



Home data report

25 School Street, Ellsworth, Hancock County, Maine, United States, 04605



Room dimensions

Floor 1

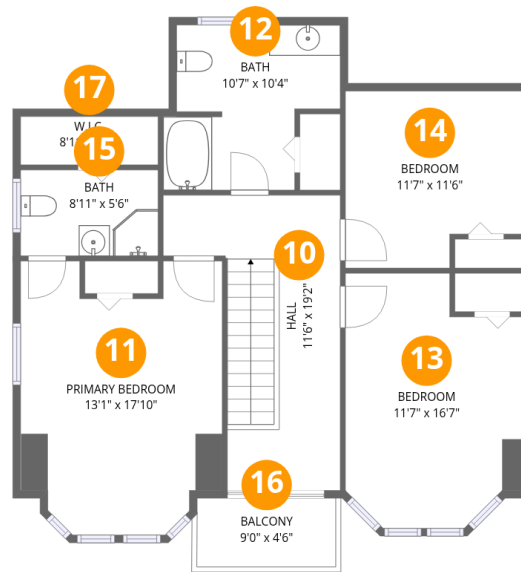
Total:1007sqft

Excluded: 276sqft

#		Dimensions	sqft	Counted as living area
1	Bedroom	11'6" x 17'1"	188 sq. ft	Yes
2	Foyer	7'8" x 14'6"	92 sq. ft	Yes
3	Hall	9'7" x 6'5"	63 sq. ft	Yes
4	Kitchen	9'6" x 12'0"	115 sq. ft	Yes
5	Bath	6'10" x 11'0"	63 sq. ft	Yes
6	Deck	33'4" x 12'2"	276 sq. ft	No
7	Living Room	13'1" x 17'5"	216 sq. ft	Yes
8	Dining Area	10'11" x 15'5"	168 sq. ft	Yes
9	Bath	4'5" x 6'8"	30 sq. ft	Yes

Home data report

25 School Street, Ellsworth, Hancock County, Maine, United States, 04605



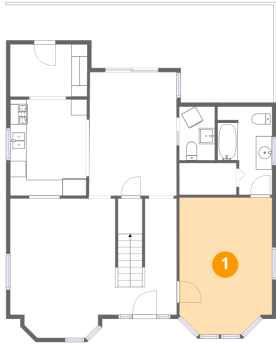
Room dimensions

Floor 2

Total:922sqft Excluded: 40sqft

#		Dimensions	sqft	Counted as living area
10	Hall	11'6" x 19'2"	157 sq. ft	Yes
11	Primary Bedroom	13'1" x 17'10"	206 sq. ft	Yes
12	Bath	10'7" x 10'4"	103 sq. ft	Yes
13	Bedroom	11'7" x 16'7"	169 sq. ft	Yes
14	Bedroom	11'7" x 11'6"	123 sq. ft	Yes
15	Bath	8'11" x 5'6"	50 sq. ft	Yes
16	Balcony	9'0" x 4'6"	40 sq. ft	No
17	W.I.C.	8'11" x 3'2"	28 sq. ft	Yes

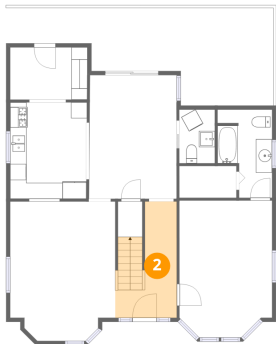
1 Floor 1 - Bedroom



Dimensions: 11'6" x 17'1"
Area: 188 sq. ft
Counted as living area: Yes

Heated: Yes
Finished: Yes
Enclosed: Yes
Contiguous: Yes
Permitted: Yes
Wet space: No
Addition: No
Conversion: No

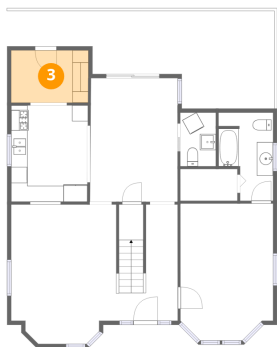
2 Floor 1 - Foyer



Dimensions: 7'8" x 14'6"
Area: 92 sq. ft
Counted as living area: Yes

Heated: Yes
Finished: Yes
Enclosed: Yes
Contiguous: Yes
Permitted: Yes
Wet space: No
Addition: No
Conversion: No

3 Floor 1 - Hall



Dimensions: 9'7" x 6'5"
Area: 63 sq. ft
Counted as living area: Yes

Heated: Yes
Finished: Yes
Enclosed: Yes
Contiguous: Yes
Permitted: Yes
Wet space: No
Addition: No
Conversion: No

4 Floor 1 - Kitchen



Dimensions: 9'6" x 12'0"
Area: 115 sq. ft
Counted as living area: Yes

Heated: Yes
Finished: Yes
Enclosed: Yes
Contiguous: Yes
Permitted: Yes
Wet space: No
Addition: No
Conversion: No

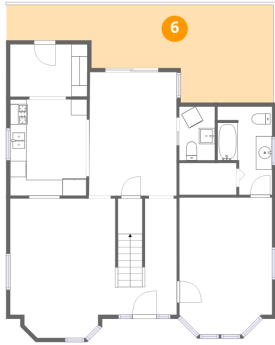
5 Floor 1 - Bath



Dimensions: 6'10" x 11'0"
Area: 63 sq. ft
Counted as living area: Yes

Heated: Yes
Finished: Yes
Enclosed: Yes
Contiguous: Yes
Permitted: Yes
Wet space: Yes
Addition: No
Conversion: No

6 Floor 1 - Deck



Dimensions: 33'4" x 12'2"
Area: 276 sq. ft
Counted as living area: No

Heated: No
Finished: No
Enclosed: No
Contiguous: Yes
Permitted: Yes
Wet space: No
Addition: No
Conversion: No

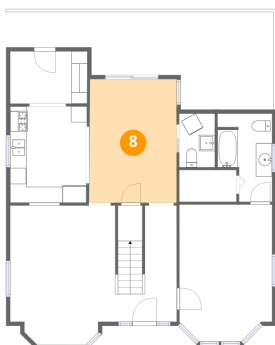
7 Floor 1 - Living Room



Dimensions: 13'1" x 17'5"
Area: 216 sq. ft
Counted as living area: Yes

Heated: Yes
Finished: Yes
Enclosed: Yes
Contiguous: Yes
Permitted: Yes
Wet space: No
Addition: No
Conversion: No

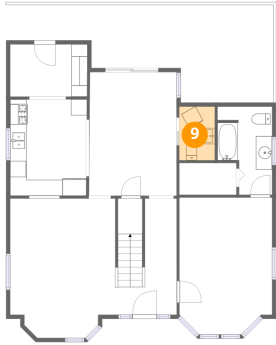
8 Floor 1 - Dining Area



Dimensions: 10'11" x 15'5"
Area: 168 sq. ft
Counted as living area: Yes

Heated: Yes
Finished: Yes
Enclosed: Yes
Contiguous: Yes
Permitted: Yes
Wet space: No
Addition: No
Conversion: No

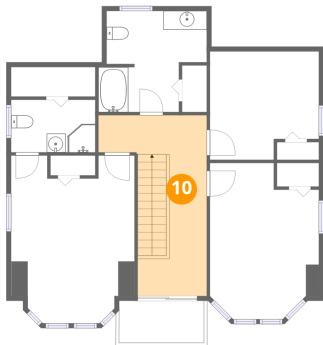
9 Floor 1 - Bath



Dimensions: 4'5" x 6'8"
Area: 30 sq. ft
Counted as living area: Yes

Heated: Yes
Finished: Yes
Enclosed: Yes
Contiguous: Yes
Permitted: Yes
Wet space: Yes
Addition: No
Conversion: No

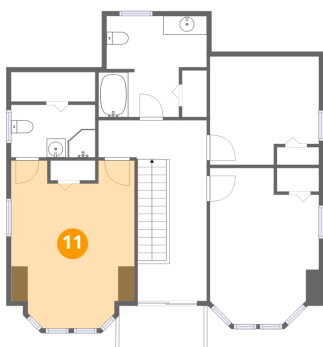
10 Floor 2 - Hall



Dimensions: 11'6" x 19'2"
Area: 157 sq. ft
Counted as living area: Yes

Heated: Yes
Finished: Yes
Enclosed: Yes
Contiguous: Yes
Permitted: Yes
Wet space: No
Addition: No
Conversion: No

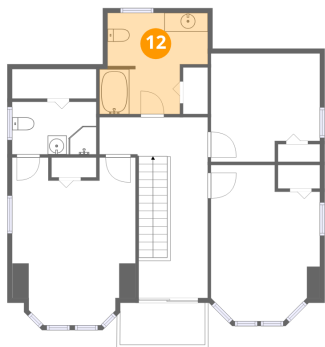
11 Floor 2 - Primary Bedroom



Dimensions: 13'1" x 17'10"
Area: 206 sq. ft
Counted as living area: Yes

Heated: Yes
Finished: Yes
Enclosed: Yes
Contiguous: Yes
Permitted: Yes
Wet space: No
Addition: No
Conversion: No

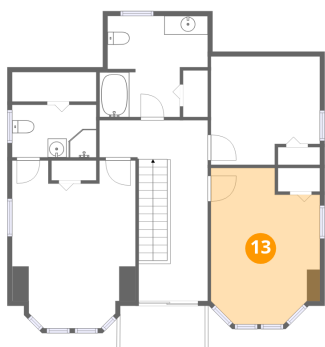
12 Floor 2 - Bath



Dimensions: 10'7" x 10'4"
Area: 103 sq. ft
Counted as living area: Yes

Heated: Yes
Finished: Yes
Enclosed: Yes
Contiguous: Yes
Permitted: Yes
Wet space: Yes
Addition: No
Conversion: No

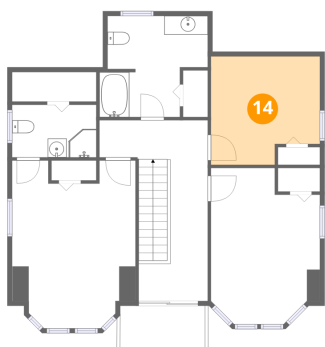
13 Floor 2 - Bedroom



Dimensions: 11'7" x 16'7"
Area: 169 sq. ft
Counted as living area: Yes

Heated: Yes
Finished: Yes
Enclosed: Yes
Contiguous: Yes
Permitted: Yes
Wet space: No
Addition: No
Conversion: No

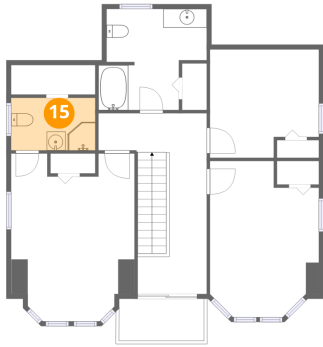
14 Floor 2 - Bedroom



Dimensions: 11'7" x 11'6"
Area: 123 sq. ft
Counted as living area: Yes

Heated: Yes
Finished: Yes
Enclosed: Yes
Contiguous: Yes
Permitted: Yes
Wet space: No
Addition: No
Conversion: No

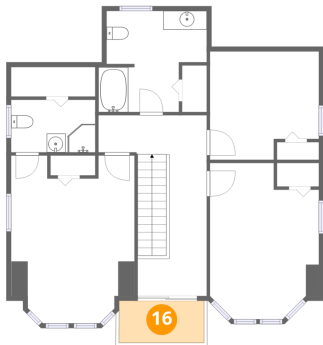
15 Floor 2 - Bath



Dimensions: 8'11" x 5'6"
Area: 50 sq. ft
Counted as living area: Yes

Heated: Yes
Finished: Yes
Enclosed: Yes
Contiguous: Yes
Permitted: Yes
Wet space: Yes
Addition: No
Conversion: No

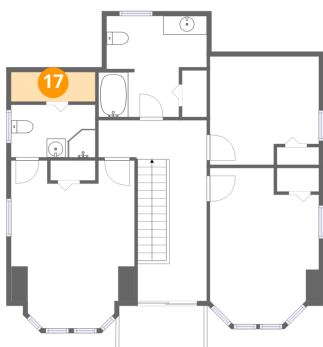
16 Floor 2 - Balcony



Dimensions: 9'0" x 4'6"
Area: 40 sq. ft
Counted as living area: No

Heated: No
Finished: No
Enclosed: No
Contiguous: Yes
Permitted: Yes
Wet space: No
Addition: No
Conversion: No

17 Floor 2 - W.I.C.



Dimensions: 8'11" x 3'2"
Area: 28 sq. ft
Counted as living area: Yes

Heated: Yes
Finished: Yes
Enclosed: Yes
Contiguous: Yes
Permitted: Yes
Wet space: No
Addition: No
Conversion: No