

Home data report

17718 Rockledge Avenue, Shady Hills, Spring Hill, Pasco
County, Florida, United States, 34610



Total Area: 1326 sq. ft

Below Ground: 0 sq. ft, 1st Floor: 1326 sq. ft

Excluded: Workshop/shed 476 sq. ft, Covered deck 263 sq. ft, Porch 87 sq. ft, Laundry 165 sq. ft, Walls: 134 sq. ft

Property summary

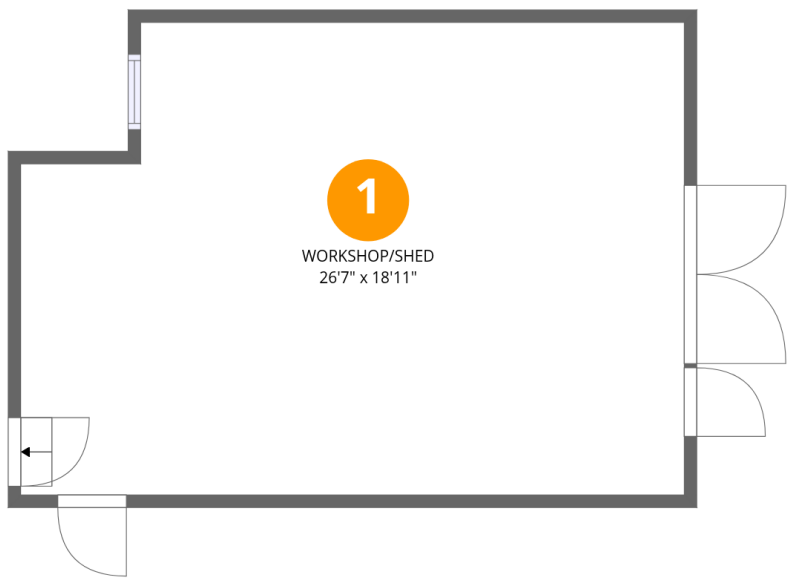
 2 Floors

 3 Bedrooms

 2 Bathrooms

Home data report

17718 Rockledge Avenue, Shady Hills, Spring Hill, Pasco
County, Florida, United States, 34610



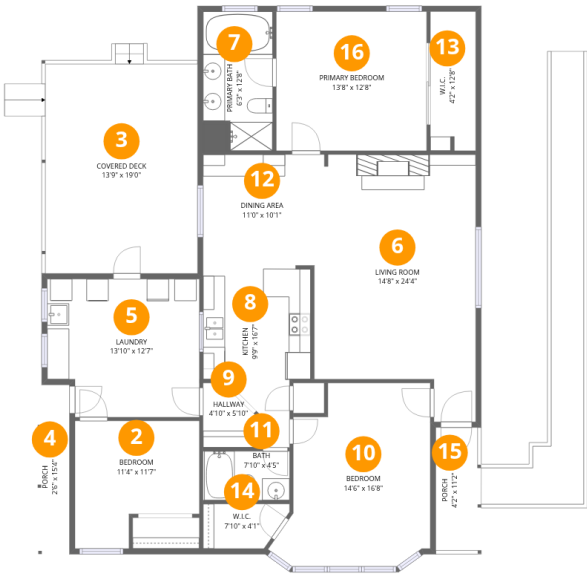
Room dimensions

Floor 1 Below grade Total:0sqft Excluded: 476sqft

#		Dimensions	sqft	Counted as living area
1	Workshop/Shed	26'7" x 18'11"	476 sq. ft	No

Home data report

17718 Rockledge Avenue, Shady Hills, Spring Hill, Pasco
County, Florida, United States, 34610



Room dimensions

Floor 2 Total:1326sqft Excluded: 515sqft

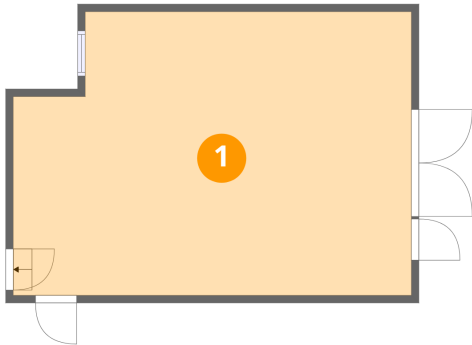
#		Dimensions	sqft	Counted as living area
2	Bedroom	11'4" x 11'7"	111 sq. ft	Yes
3	Covered Deck	13'9" x 19'0"	263 sq. ft	No
4	Porch	2'6" x 15'4"	39 sq. ft	No
5	Laundry	13'10" x 12'7"	165 sq. ft	No
6	Living Room	14'8" x 24'4"	309 sq. ft	Yes
7	Primary Bath	6'3" x 12'8"	73 sq. ft	Yes
8	Kitchen	9'9" x 16'7"	123 sq. ft	Yes
9	Hallway	4'10" x 5'10"	24 sq. ft	Yes
10	Bedroom	14'6" x 16'8"	201 sq. ft	Yes
11	Bath	7'10" x 4'5"	35 sq. ft	Yes
12	Dining Area	11'0" x 10'1"	107 sq. ft	Yes

Home data report

**17718 Rockledge Avenue, Shady Hills, Spring Hill, Pasco
County, Florida, United States, 34610**

#		Dimensions	sqft	Counted as living area
13	W.I.C.	4'2" x 12'8"	52 sq. ft	Yes
14	W.I.C.	7'10" x 4'1"	28 sq. ft	Yes
15	Porch	4'2" x 11'2"	48 sq. ft	No
16	Primary Bedroom	13'8" x 12'8"	173 sq. ft	Yes

1 Floor 1 - Workshop/Shed



Dimensions: 26'7" x 18'11"
Area: 476 sq. ft
Counted as living area: No

Heated: No
Finished: No
Enclosed: Yes
Contiguous: Yes
Permitted: Yes
Wet space: No
Addition: No
Conversion: No

2 Floor 2 - Bedroom



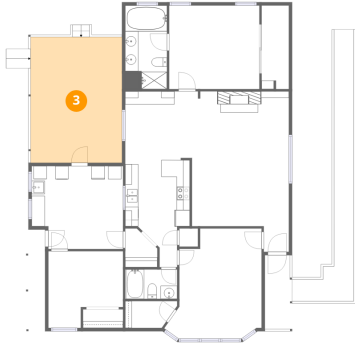
Dimensions: 11'4" x 11'7"
Area: 111 sq. ft
Counted as living area: No

Heated: Yes
Finished: Yes
Enclosed: Yes
Contiguous: No
Permitted: Yes
Wet space: No
Addition: No
Conversion: No

Home data report

17718 Rockledge Avenue, Shady Hills, Spring Hill, Pasco
County, Florida, United States, 34610

3 Floor 2 - Covered Deck



Dimensions: 13'9" x 19'0"
Area: 263 sq. ft
Counted as living area: No

Heated: No
Finished: No
Enclosed: No
Contiguous: Yes
Permitted: Yes
Wet space: No
Addition: No
Conversion: No

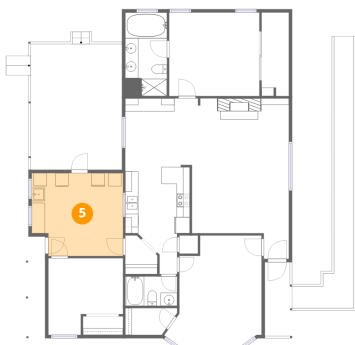
4 Floor 2 - Porch



Dimensions: 2'6" x 15'4"
Area: 39 sq. ft
Counted as living area: No

Heated: No
Finished: No
Enclosed: No
Contiguous: Yes
Permitted: Yes
Wet space: No
Addition: No
Conversion: No

5 Floor 2 - Laundry



Dimensions: 13'10" x 12'7"
Area: 165 sq. ft
Counted as living area: No

Heated: Yes
Finished: No
Enclosed: Yes
Contiguous: Yes
Permitted: Yes
Wet space: No
Addition: No
Conversion: No

Home data report

17718 Rockledge Avenue, Shady Hills, Spring Hill, Pasco
County, Florida, United States, 34610

6 Floor 2 - Living Room



Dimensions: 14'8" x 24'4"
Area: 309 sq. ft
Counted as living area: Yes

Heated: Yes
Finished: Yes
Enclosed: Yes
Contiguous: Yes
Permitted: Yes
Wet space: No
Addition: No
Conversion: No

7 Floor 2 - Primary Bath



Dimensions: 6'3" x 12'8"
Area: 73 sq. ft
Counted as living area: Yes

Heated: Yes
Finished: Yes
Enclosed: Yes
Contiguous: Yes
Permitted: Yes
Wet space: Yes
Addition: No
Conversion: No

8 Floor 2 - Kitchen



Dimensions: 9'9" x 16'7"
Area: 123 sq. ft
Counted as living area: Yes

Heated: Yes
Finished: Yes
Enclosed: Yes
Contiguous: Yes
Permitted: Yes
Wet space: No
Addition: No
Conversion: No

Home data report

17718 Rockledge Avenue, Shady Hills, Spring Hill, Pasco
County, Florida, United States, 34610

9 Floor 2 - Hallway



Dimensions: 4'10" x 5'10"
Area: 24 sq. ft
Counted as living area: Yes

Heated: Yes
Finished: Yes
Enclosed: Yes
Contiguous: Yes
Permitted: Yes
Wet space: No
Addition: No
Conversion: No

10 Floor 2 - Bedroom



Dimensions: 14'6" x 16'8"
Area: 201 sq. ft
Counted as living area: Yes

Heated: Yes
Finished: Yes
Enclosed: Yes
Contiguous: Yes
Permitted: Yes
Wet space: No
Addition: No
Conversion: No

11 Floor 2 - Bath



Dimensions: 7'10" x 4'5"
Area: 35 sq. ft
Counted as living area: Yes

Heated: Yes
Finished: Yes
Enclosed: Yes
Contiguous: Yes
Permitted: Yes
Wet space: Yes
Addition: No
Conversion: No

Home data report

17718 Rockledge Avenue, Shady Hills, Spring Hill, Pasco
County, Florida, United States, 34610

12 Floor 2 - Dining Area



Dimensions: 11'0" x 10'1"
Area: 107 sq. ft
Counted as living area: Yes

Heated: Yes
Finished: Yes
Enclosed: Yes
Contiguous: Yes
Permitted: Yes
Wet space: No
Addition: No
Conversion: No

13 Floor 2 - W.I.C.



Dimensions: 4'2" x 12'8"
Area: 52 sq. ft
Counted as living area: Yes

Heated: Yes
Finished: Yes
Enclosed: Yes
Contiguous: Yes
Permitted: Yes
Wet space: No
Addition: No
Conversion: No

14 Floor 2 - W.I.C.



Dimensions: 7'10" x 4'1"
Area: 28 sq. ft
Counted as living area: Yes

Heated: Yes
Finished: Yes
Enclosed: Yes
Contiguous: Yes
Permitted: Yes
Wet space: No
Addition: No
Conversion: No

15 Floor 2 - Porch



Dimensions: 4'2" x 11'2"
Area: 48 sq. ft
Counted as living area: No

Heated: No
Finished: No
Enclosed: No
Contiguous: Yes
Permitted: Yes
Wet space: No
Addition: No
Conversion: No

16 Floor 2 - Primary Bedroom



Dimensions: 13'8" x 12'8"
Area: 173 sq. ft
Counted as living area: Yes

Heated: Yes
Finished: Yes
Enclosed: Yes
Contiguous: Yes
Permitted: Yes
Wet space: No
Addition: No
Conversion: No