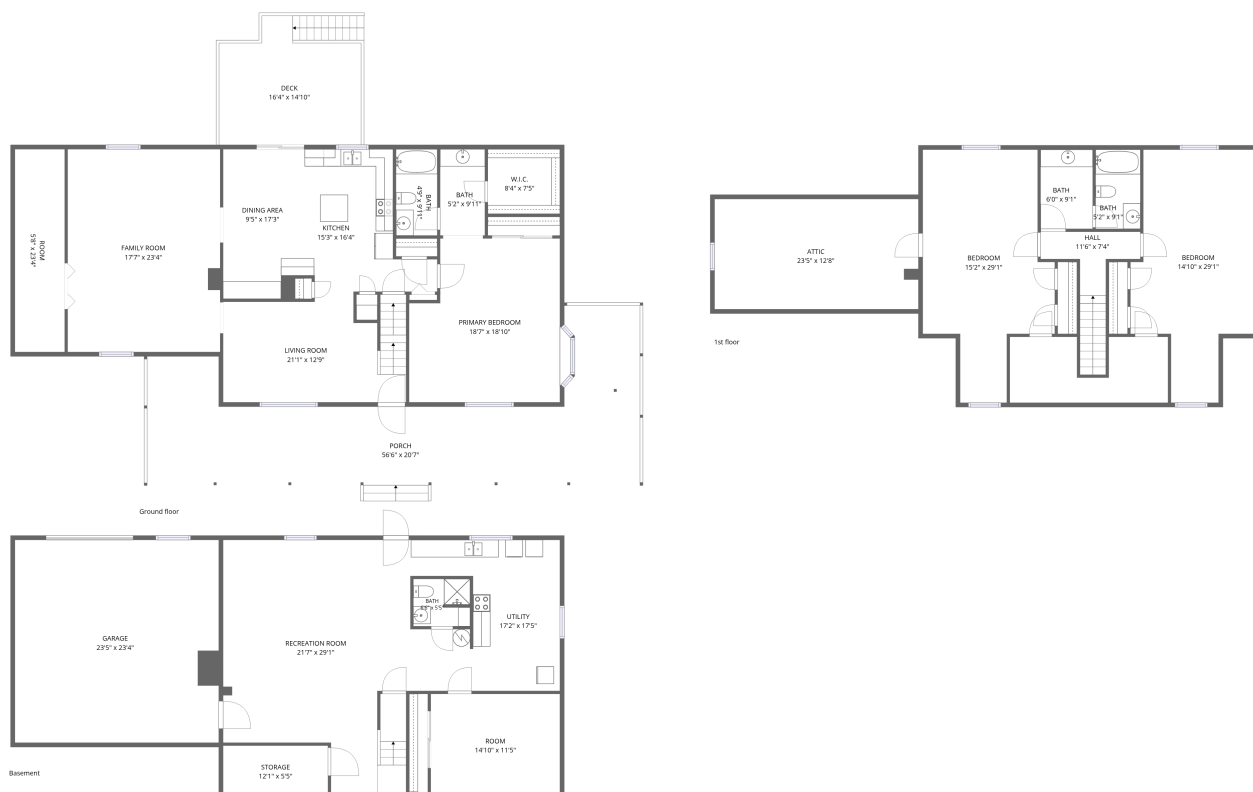


## Home report

191 Fairfield Drive, King William, King William County, Virginia,  
United States, 23086



**Total Area: 3697 sq. ft**

Basement: 1062 sq. ft, Ground Floor: 1693 sq. ft, 1st Floor: 942 sq. ft

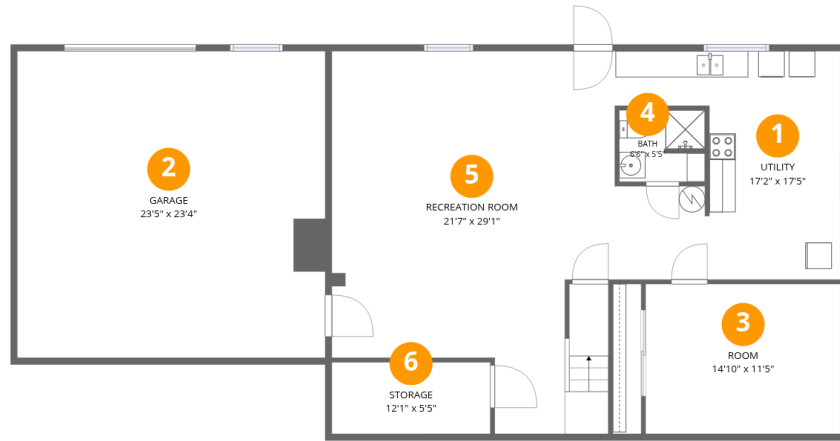
Excluded: Storage 66 sq. ft, Garage 547 sq. ft, Porch 668 sq. ft, Deck 226 sq. ft, Undefined 121 sq. ft, Attic 297 sq. ft, Walls: 291 sq. ft

## Property summary



## Home report

191 Fairfield Drive, King William, King William County, Virginia,  
United States, 23086



## Room dimensions

Floor 1 Below grade

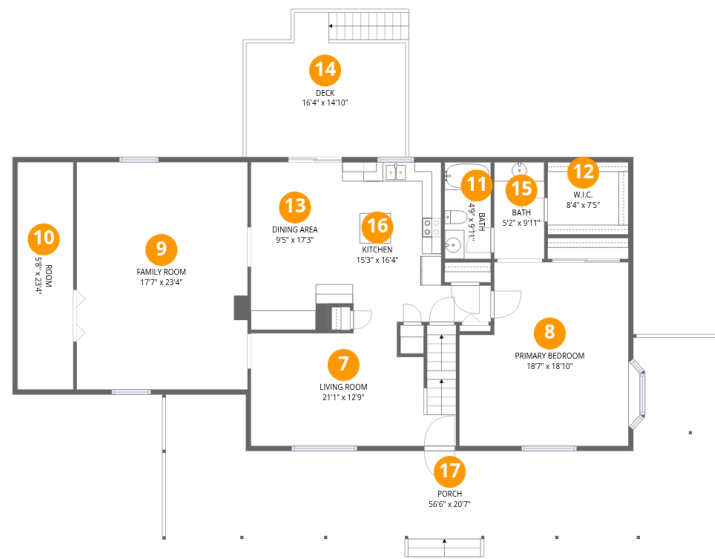
Total:1062sqft

Excluded: 613sqft

#		Dimensions	sqft	Counted as living area
1	Utility	17'2" x 17'5"	254 sq. ft	Yes
2	Garage	23'5" x 23'4"	547 sq. ft	No
3	Room	14'10" x 11'5"	169 sq. ft	Yes
4	Bath	6'6" x 5'5"	34 sq. ft	Yes
5	Recreation Room	21'7" x 29'1"	547 sq. ft	Yes
6	Storage	12'1" x 5'5"	66 sq. ft	No

Home report

191 Fairfield Drive, King William, King William County, Virginia, United States, 23086



## Room dimensions

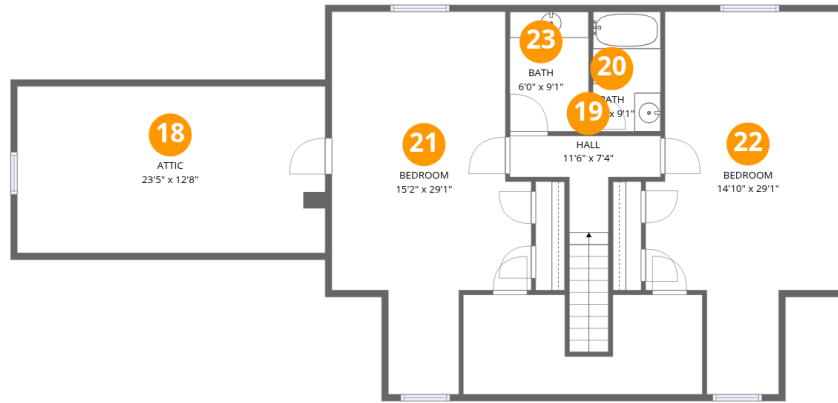
Floor 2

Total:1693sqft Excluded: 894sqft

#		Dimensions	sqft	Counted as living area
7	Living Room	21'1" x 12'9"	243 sq. ft	Yes
8	Primary Bedroom	18'7" x 18'10"	307 sq. ft	Yes
9	Family Room	17'7" x 23'4"	409 sq. ft	Yes
10	Room	5'8" x 23'4"	134 sq. ft	Yes
11	Bath	4'9" x 9'11"	47 sq. ft	Yes
12	W.I.C.	8'4" x 7'5"	62 sq. ft	Yes
13	Dining Area	9'5" x 17'3"	158 sq. ft	Yes
14	Deck	16'4" x 14'10"	226 sq. ft	No
15	Bath	5'2" x 9'11"	51 sq. ft	Yes
16	Kitchen	15'3" x 16'4"	183 sq. ft	Yes
17	Porch	56'6" x 20'7"	668 sq. ft	No

# Home report

191 Fairfield Drive, King William, King William County, Virginia, United States, 23086



## Room dimensions

Floor 3

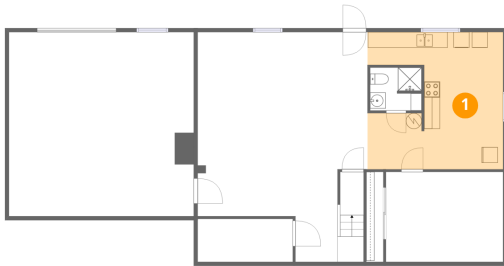
Total:942sqft

Excluded: 418sqft

#		Dimensions	sqft	Counted as living area
18	Attic	23'5" x 12'8"	297 sq. ft	No
19	Hall	11'6" x 7'4"	76 sq. ft	Yes
20	Bath	5'2" x 9'1"	47 sq. ft	Yes
21	Bedroom	15'2" x 29'1"	339 sq. ft	Yes
22	Bedroom	14'10" x 29'1"	339 sq. ft	Yes
23	Bath	6'0" x 9'1"	55 sq. ft	Yes

191 Fairfield Drive, King William, King William County, Virginia,  
United States, 23086

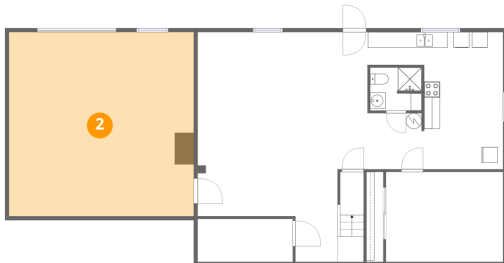
## 1 Floor 1 - Utility



Dimensions: 17'2" x 17'5"  
Area: 254 sq. ft  
Counted as living area: Yes

Heated: Yes  
Finished: Yes  
Enclosed: Yes  
Contiguous: Yes  
Permitted: Yes  
Wet space: No  
Addition: No  
Conversion: No

## 2 Floor 1 - Garage

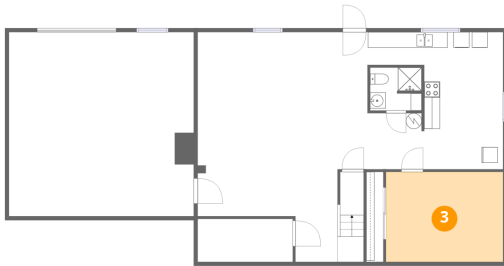


Dimensions: 23'5" x 23'4"  
Area: 547 sq. ft  
Counted as living area: No

Heated: No  
Finished: No  
Enclosed: Yes  
Contiguous: Yes  
Permitted: Yes  
Wet space: No  
Addition: No  
Conversion: No

191 Fairfield Drive, King William, King William County, Virginia,  
United States, 23086

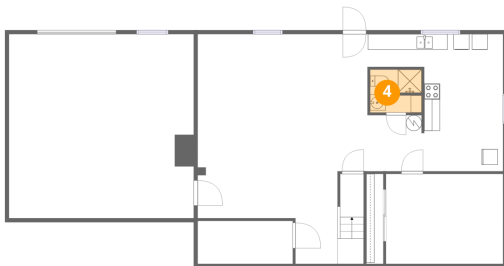
### 3 Floor 1 - Room



Dimensions: 14'10" x 11'5"  
Area: 169 sq. ft  
Counted as living area: Yes

Heated: Yes  
Finished: Yes  
Enclosed: Yes  
Contiguous: Yes  
Permitted: Yes  
Wet space: No  
Addition: No  
Conversion: No

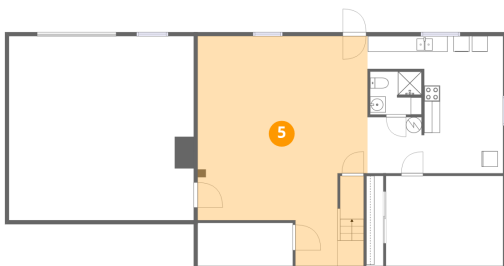
### 4 Floor 1 - Bath



Dimensions: 6'6" x 5'5"  
Area: 34 sq. ft  
Counted as living area: Yes

Heated: Yes  
Finished: Yes  
Enclosed: Yes  
Contiguous: Yes  
Permitted: Yes  
Wet space: Yes  
Addition: No  
Conversion: No

### 5 Floor 1 - Recreation Room

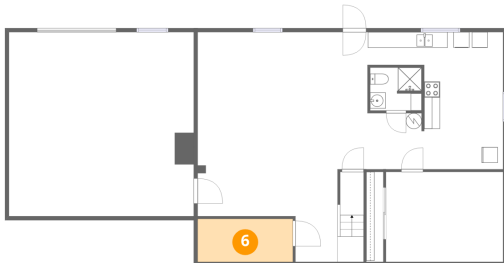


Dimensions: 21'7" x 29'1"  
Area: 547 sq. ft  
Counted as living area: Yes

Heated: Yes  
Finished: Yes  
Enclosed: Yes  
Contiguous: Yes  
Permitted: Yes  
Wet space: No  
Addition: No  
Conversion: No

191 Fairfield Drive, King William, King William County, Virginia,  
United States, 23086

## 6 Floor 1 - Storage



Dimensions: 12'1" x 5'5"  
Area: 66 sq. ft  
Counted as living area: No

Heated: No  
Finished: No  
Enclosed: No  
Contiguous: Yes  
Permitted: Yes  
Wet space: No  
Addition: No  
Conversion: No

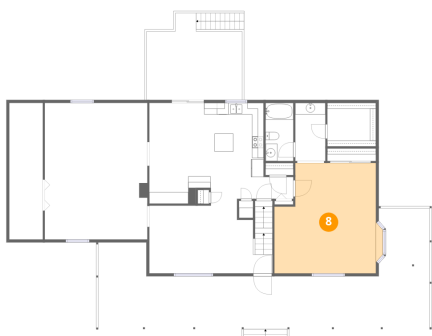
## 7 Floor 2 - Living Room



Dimensions: 21'1" x 12'9"  
Area: 243 sq. ft  
Counted as living area: Yes

Heated: Yes  
Finished: Yes  
Enclosed: Yes  
Contiguous: Yes  
Permitted: Yes  
Wet space: No  
Addition: No  
Conversion: No

## 8 Floor 2 - Primary Bedroom



Dimensions: 18'7" x 18'10"  
Area: 307 sq. ft  
Counted as living area: Yes

Heated: Yes  
Finished: Yes  
Enclosed: Yes  
Contiguous: Yes  
Permitted: Yes  
Wet space: No  
Addition: No  
Conversion: No

191 Fairfield Drive, King William, King William County, Virginia,  
United States, 23086

## 9 Floor 2 - Family Room



Dimensions: 17'7" x 23'4"  
Area: 409 sq. ft  
Counted as living area: Yes

Heated: Yes  
Finished: Yes  
Enclosed: Yes  
Contiguous: Yes  
Permitted: Yes  
Wet space: No  
Addition: No  
Conversion: No

## 10 Floor 2 - Room



Dimensions: 5'8" x 23'4"  
Area: 134 sq. ft  
Counted as living area: Yes

Heated: Yes  
Finished: Yes  
Enclosed: Yes  
Contiguous: Yes  
Permitted: Yes  
Wet space: No  
Addition: No  
Conversion: No

## 11 Floor 2 - Bath



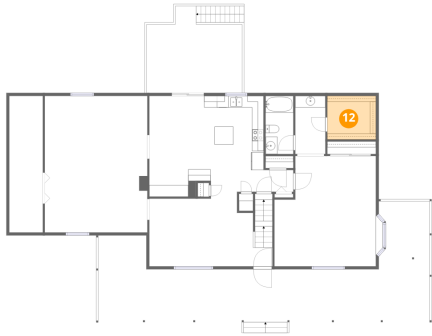
Dimensions: 4'9" x 9'11"  
Area: 47 sq. ft  
Counted as living area: Yes

Heated: Yes  
Finished: Yes  
Enclosed: Yes  
Contiguous: Yes  
Permitted: Yes  
Wet space: Yes  
Addition: No  
Conversion: No

191 Fairfield Drive, King William, King William County, Virginia,  
United States, 23086

**12** Floor 2 - W.I.C.

---



Dimensions: 8'4" x 7'5"  
Area: 62 sq. ft  
Counted as living area: Yes

Heated: Yes  
Finished: Yes  
Enclosed: Yes  
Contiguous: Yes  
Permitted: Yes  
Wet space: No  
Addition: No  
Conversion: No

**13** Floor 2 - Dining Area

---

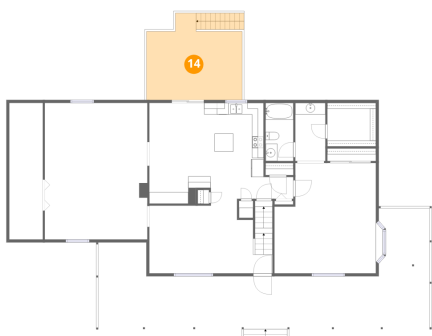


Dimensions: 9'5" x 17'3"  
Area: 158 sq. ft  
Counted as living area: Yes

Heated: Yes  
Finished: Yes  
Enclosed: Yes  
Contiguous: Yes  
Permitted: Yes  
Wet space: No  
Addition: No  
Conversion: No

**14** Floor 2 - Deck

---

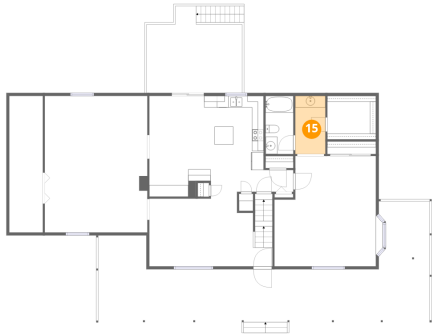


Dimensions: 16'4" x 14'10"  
Area: 226 sq. ft  
Counted as living area: No

Heated: No  
Finished: No  
Enclosed: No  
Contiguous: Yes  
Permitted: Yes  
Wet space: No  
Addition: No  
Conversion: No

191 Fairfield Drive, King William, King William County, Virginia,  
United States, 23086

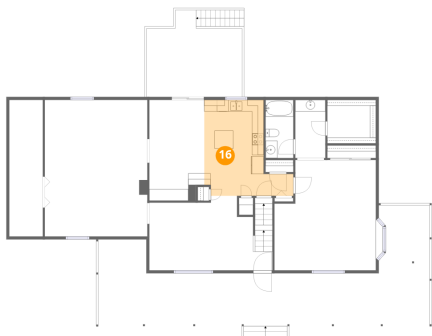
**15** Floor 2 - Bath



Dimensions: 5'2" x 9'11"  
Area: 51 sq. ft  
Counted as living area: Yes

Heated: Yes  
Finished: Yes  
Enclosed: Yes  
Contiguous: Yes  
Permitted: Yes  
Wet space: Yes  
Addition: No  
Conversion: No

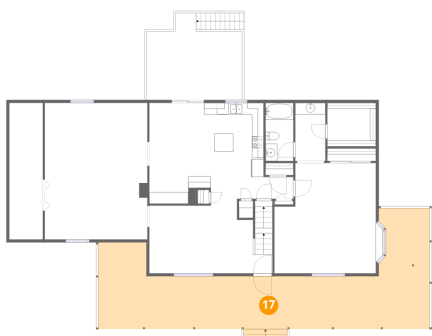
**16** Floor 2 - Kitchen



Dimensions: 15'3" x 16'4"  
Area: 183 sq. ft  
Counted as living area: Yes

Heated: Yes  
Finished: Yes  
Enclosed: Yes  
Contiguous: Yes  
Permitted: Yes  
Wet space: No  
Addition: No  
Conversion: No

**17** Floor 2 - Porch

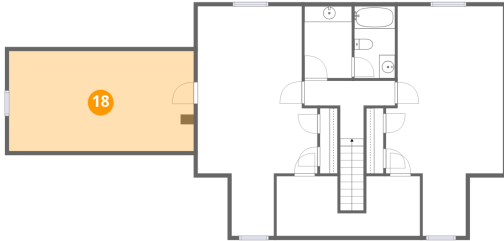


Dimensions: 56'6" x 20'7"  
Area: 668 sq. ft  
Counted as living area: No

Heated: No  
Finished: No  
Enclosed: No  
Contiguous: Yes  
Permitted: Yes  
Wet space: No  
Addition: No  
Conversion: No

191 Fairfield Drive, King William, King William County, Virginia,  
United States, 23086

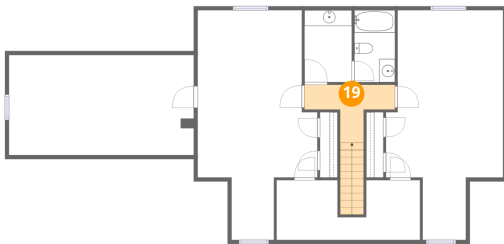
**18** Floor 3 - Attic



Dimensions: 23'5" x 12'8"  
Area: 297 sq. ft  
Counted as living area: No

Heated: No  
Finished: No  
Enclosed: Yes  
Contiguous: Yes  
Permitted: Yes  
Wet space: No  
Addition: No  
Conversion: No

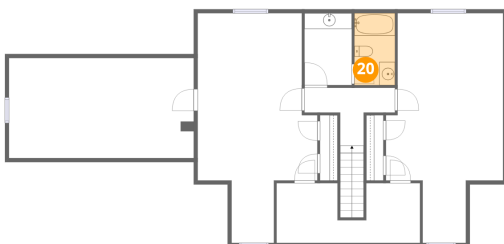
**19** Floor 3 - Hall



Dimensions: 11'6" x 7'4"  
Area: 76 sq. ft  
Counted as living area: Yes

Heated: Yes  
Finished: Yes  
Enclosed: Yes  
Contiguous: Yes  
Permitted: Yes  
Wet space: No  
Addition: No  
Conversion: No

**20** Floor 3 - Bath

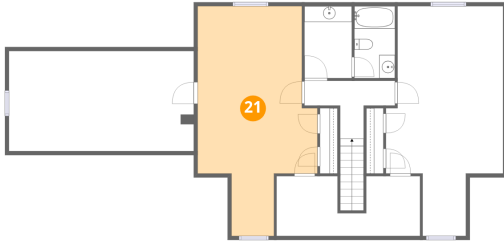


Dimensions: 5'2" x 9'1"  
Area: 47 sq. ft  
Counted as living area: Yes

Heated: Yes  
Finished: Yes  
Enclosed: Yes  
Contiguous: Yes  
Permitted: Yes  
Wet space: Yes  
Addition: No  
Conversion: No

191 Fairfield Drive, King William, King William County, Virginia,  
United States, 23086

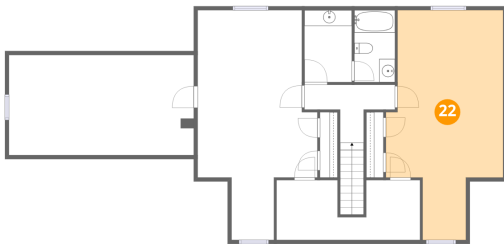
**21** Floor 3 - Bedroom



Dimensions: 15'2" x 29'1"  
Area: 339 sq. ft  
Counted as living area: Yes

Heated: Yes  
Finished: Yes  
Enclosed: Yes  
Contiguous: Yes  
Permitted: Yes  
Wet space: No  
Addition: No  
Conversion: No

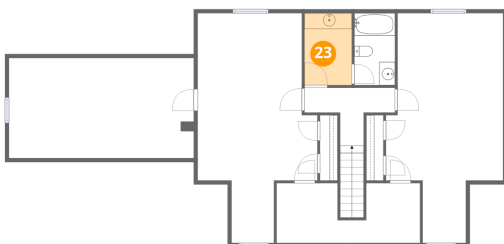
**22** Floor 3 - Bedroom



Dimensions: 14'10" x 29'1"  
Area: 339 sq. ft  
Counted as living area: Yes

Heated: Yes  
Finished: Yes  
Enclosed: Yes  
Contiguous: Yes  
Permitted: Yes  
Wet space: No  
Addition: No  
Conversion: No

**23** Floor 3 - Bath



Dimensions: 6'0" x 9'1"  
Area: 55 sq. ft  
Counted as living area: Yes

Heated: Yes  
Finished: Yes  
Enclosed: Yes  
Contiguous: Yes  
Permitted: Yes  
Wet space: Yes  
Addition: No  
Conversion: No