



Total Area: 1854 sq. ft

Basement: 134 sq. ft, 1st Floor: 1161 sq. ft, 2nd Floor: 559 sq. ft

Excluded: Basement 1106 sq. ft, Deck 116 sq. ft, Garage 516 sq. ft, Stairwell 64 sq. ft, Open to below 35 sq. ft, Walls: 254 sq. ft

Property summary


 **3** Floors

 **3** Bedrooms

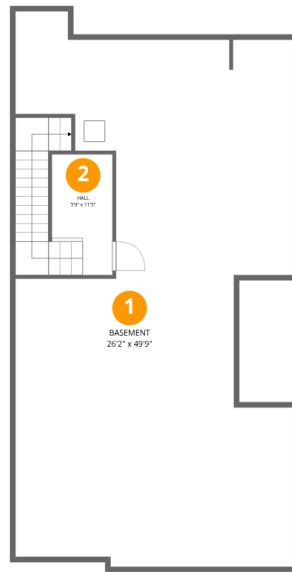
 **2** Bathrooms

Home data report

6819 E Archer Dr, Denver, CO, US

 **1**
Half baths

 **1**
Garages



Room dimensions

Floor 1 Below grade

Total:134sqft

Excluded: 1106sqft

#		Dimensions	sqft	Counted as living area
1	Basement	26'2" x 49'9"	1304 sq. ft	No
2	Hall	5'9" x 11'5"	65 sq. ft	Yes



Room dimensions

Floor 2

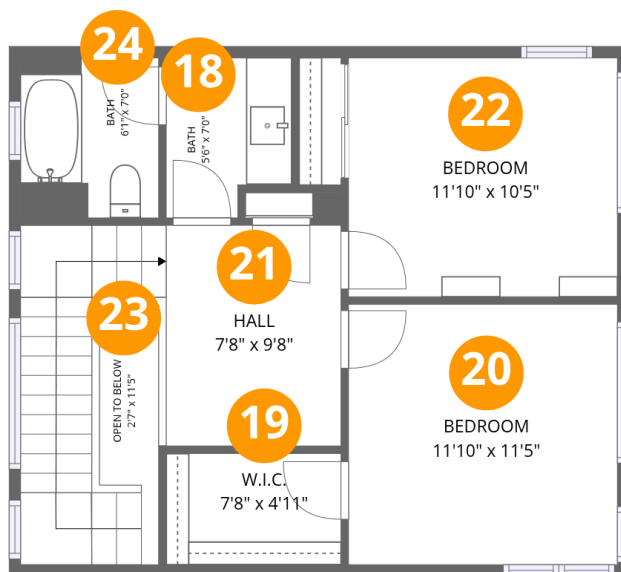
Total: 1161 sqft Excluded: 708 sqft

#		Dimensions	sqft	Counted as living area
3	Kitchen	9'0" x 17'0"	153 sq. ft	Yes
4	Bath	10'9" x 6'2"	66 sq. ft	Yes
5	Garage	24'3" x 21'10"	529 sq. ft	No
6	Open To Below	1'6" x 7'11"	12 sq. ft	No
7	Living Room	17'3" x 15'5"	265 sq. ft	Yes
8	Laundry	4'11" x 9'8"	48 sq. ft	Yes
9	Deck	11'5" x 11'6"	131 sq. ft	No
10	Primary Bedroom	14'5" x 15'9"	227 sq. ft	Yes
11	Dining Area	11'8" x 11'10"	138 sq. ft	Yes
12	Bath	2'11" x 7'10"	23 sq. ft	Yes
13	Stairwell	5'4" x 14'11"	79 sq. ft	No

Home data report

6819 E Archer Dr,Denver,CO,US

#		Dimensions	sqft	Counted as living area
14	Bath	2'11" x 5'0"	14 sq. ft	Yes
15	W.I.C.	4'7" x 11'1"	51 sq. ft	Yes
16	Hall	6'7" x 22'3"	146 sq. ft	Yes
17	Foyer	5'9" x 6'6"	38 sq. ft	Yes



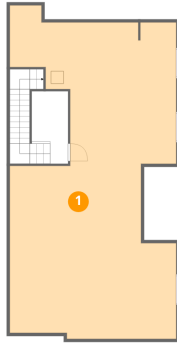
Room dimensions

Floor 3

Total: 559 sqft Excluded: 23 sqft

#		Dimensions	sqft	Counted as living area
18	Bath	5'6" x 7'0"	39 sq. ft	Yes
19	W.I.C.	7'8" x 4'11"	37 sq. ft	Yes
20	Bedroom	11'10" x 11'5"	135 sq. ft	Yes
21	Hall	7'8" x 9'8"	74 sq. ft	Yes
22	Bedroom	11'10" x 10'5"	123 sq. ft	Yes
23	Open To Below	2'7" x 11'5"	29 sq. ft	No
24	Bath	6'1" x 7'0"	43 sq. ft	Yes

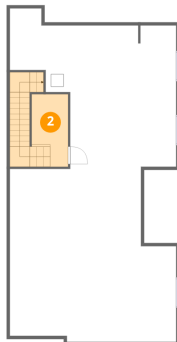
1 Floor 1 - Basement



Dimensions: 26'2" x 49'9"
Area: 1304 sq. ft
Counted as living area: No

Heated: Yes
Finished: No
Enclosed: Yes
Contiguous: Yes
Permitted: Yes
Wet space: No
Addition: No
Conversion: No

2 Floor 1 - Hall



Dimensions: 5'9" x 11'5"
Area: 65 sq. ft
Counted as living area: No

Heated: Yes
Finished: Yes
Enclosed: Yes
Contiguous: No
Permitted: Yes
Wet space: No
Addition: No
Conversion: No

3 Floor 2 - Kitchen



Dimensions: 9'0" x 17'0"
Area: 153 sq. ft
Counted as living area: Yes

Heated: Yes
Finished: Yes
Enclosed: Yes
Contiguous: Yes
Permitted: Yes
Wet space: No
Addition: No
Conversion: No

4 Floor 2 - Bath



Dimensions: 10'9" x 6'2"
Area: 66 sq. ft
Counted as living area: Yes

Heated: Yes
Finished: Yes
Enclosed: Yes
Contiguous: Yes
Permitted: Yes
Wet space: Yes
Addition: No
Conversion: No

5 Floor 2 - Garage



Dimensions: 24'3" x 21'10"
Area: 529 sq. ft
Counted as living area: No

Heated: No
Finished: No
Enclosed: Yes
Contiguous: Yes
Permitted: Yes
Wet space: No
Addition: No
Conversion: No

6 Floor 2 - Open To Below



Dimensions: 1'6" x 7'11"
Area: 12 sq. ft
Counted as living area: No

Heated: No
Finished: No
Enclosed: No
Contiguous: Yes
Permitted: No
Wet space: No
Addition: No
Conversion: No

7 Floor 2 - Living Room



Dimensions: 17'3" x 15'5"
Area: 265 sq. ft
Counted as living area: Yes

Heated: Yes
Finished: Yes
Enclosed: Yes
Contiguous: Yes
Permitted: Yes
Wet space: No
Addition: No
Conversion: No

8 Floor 2 - Laundry



Dimensions: 4'11" x 9'8"
Area: 48 sq. ft
Counted as living area: Yes

Heated: Yes
Finished: Yes
Enclosed: Yes
Contiguous: Yes
Permitted: Yes
Wet space: No
Addition: No
Conversion: No

9 Floor 2 - Deck



Dimensions: 11'5" x 11'6"
Area: 131 sq. ft
Counted as living area: No

Heated: No
Finished: No
Enclosed: No
Contiguous: Yes
Permitted: Yes
Wet space: No
Addition: No
Conversion: No

10 Floor 2 - Primary Bedroom



Dimensions: 14'5" x 15'9"
Area: 227 sq. ft
Counted as living area: Yes

Heated: Yes
Finished: Yes
Enclosed: Yes
Contiguous: Yes
Permitted: Yes
Wet space: No
Addition: No
Conversion: No

11 Floor 2 - Dining Area



Dimensions: 11'8" x 11'10"
Area: 138 sq. ft
Counted as living area: Yes

Heated: Yes
Finished: Yes
Enclosed: Yes
Contiguous: Yes
Permitted: Yes
Wet space: No
Addition: No
Conversion: No

12 Floor 2 - Bath



Dimensions: 2'11" x 7'10"
Area: 23 sq. ft
Counted as living area: Yes

Heated: Yes
Finished: Yes
Enclosed: Yes
Contiguous: Yes
Permitted: Yes
Wet space: Yes
Addition: No
Conversion: No

13 Floor 2 - Stairwell



Dimensions: 5'4" x 14'11"
Area: 79 sq. ft
Counted as living area: No

Heated: No
Finished: No
Enclosed: No
Contiguous: Yes
Permitted: No
Wet space: No
Addition: No
Conversion: No

14 Floor 2 - Bath



Dimensions: 2'11" x 5'0"
Area: 14 sq. ft
Counted as living area: Yes

Heated: Yes
Finished: Yes
Enclosed: Yes
Contiguous: Yes
Permitted: Yes
Wet space: Yes
Addition: No
Conversion: No

15 Floor 2 - W.I.C.



Dimensions: 4'7" x 11'1"
Area: 51 sq. ft
Counted as living area: Yes

Heated: Yes
Finished: Yes
Enclosed: Yes
Contiguous: Yes
Permitted: Yes
Wet space: No
Addition: No
Conversion: No

16 Floor 2 - Hall



Dimensions: 6'7" x 22'3"
Area: 146 sq. ft
Counted as living area: Yes

Heated: Yes
Finished: Yes
Enclosed: Yes
Contiguous: Yes
Permitted: Yes
Wet space: No
Addition: No
Conversion: No

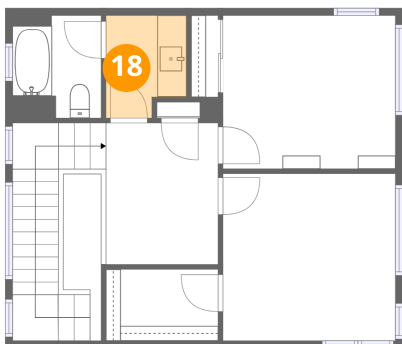
17 Floor 2 - Foyer



Dimensions: 5'9" x 6'6"
Area: 38 sq. ft
Counted as living area: Yes

Heated: Yes
Finished: Yes
Enclosed: Yes
Contiguous: Yes
Permitted: Yes
Wet space: No
Addition: No
Conversion: No

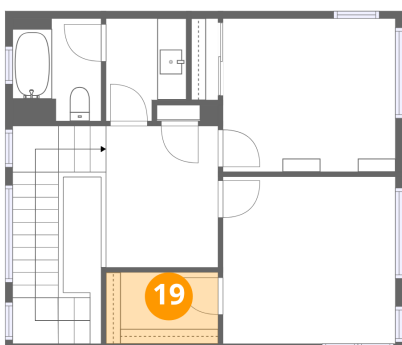
18 Floor 3 - Bath



Dimensions: 5'6" x 7'0"
Area: 39 sq. ft
Counted as living area: Yes

Heated: Yes
Finished: Yes
Enclosed: Yes
Contiguous: Yes
Permitted: Yes
Wet space: Yes
Addition: No
Conversion: No

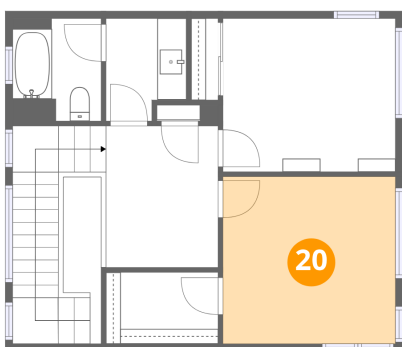
19 Floor 3 - W.I.C.



Dimensions: 7'8" x 4'11"
Area: 37 sq. ft
Counted as living area: Yes

Heated: Yes
Finished: Yes
Enclosed: Yes
Contiguous: Yes
Permitted: Yes
Wet space: No
Addition: No
Conversion: No

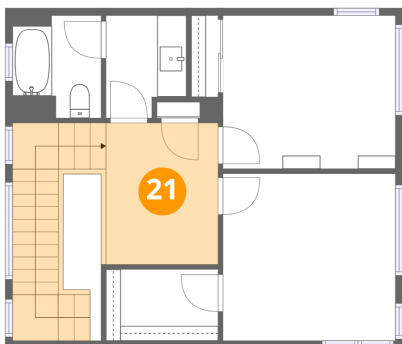
20 Floor 3 - Bedroom



Dimensions: 11'10" x 11'5"
Area: 135 sq. ft
Counted as living area: Yes

Heated: Yes
Finished: Yes
Enclosed: Yes
Contiguous: Yes
Permitted: Yes
Wet space: No
Addition: No
Conversion: No

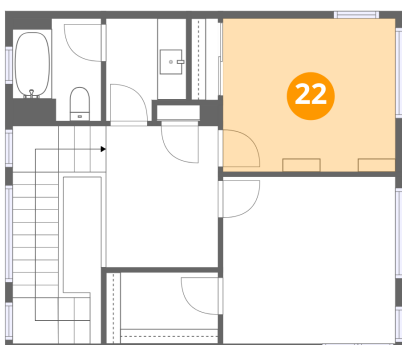
21 Floor 3 - Hall



Dimensions: 7'8" x 9'8"
Area: 74 sq. ft
Counted as living area: Yes

Heated: Yes
Finished: Yes
Enclosed: Yes
Contiguous: Yes
Permitted: Yes
Wet space: No
Addition: No
Conversion: No

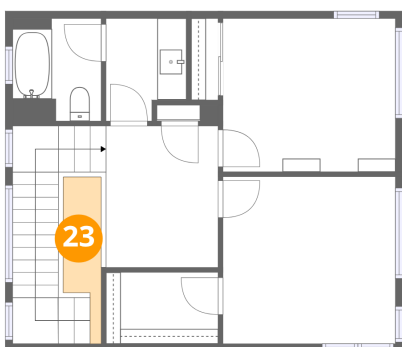
22 Floor 3 - Bedroom



Dimensions: 11'10" x 10'5"
Area: 123 sq. ft
Counted as living area: Yes

Heated: Yes
Finished: Yes
Enclosed: Yes
Contiguous: Yes
Permitted: Yes
Wet space: No
Addition: No
Conversion: No

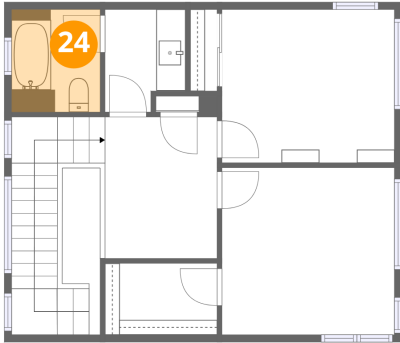
23 Floor 3 - Open To Below



Dimensions: 2'7" x 11'5"
Area: 29 sq. ft
Counted as living area: No

Heated: No
Finished: No
Enclosed: No
Contiguous: Yes
Permitted: No
Wet space: No
Addition: No
Conversion: No

24 Floor 3 - Bath



Dimensions: 6'1" x 7'0"
Area: 43 sq. ft
Counted as living area: Yes

Heated: Yes
Finished: Yes
Enclosed: Yes
Contiguous: Yes
Permitted: Yes
Wet space: Yes
Addition: No
Conversion: No