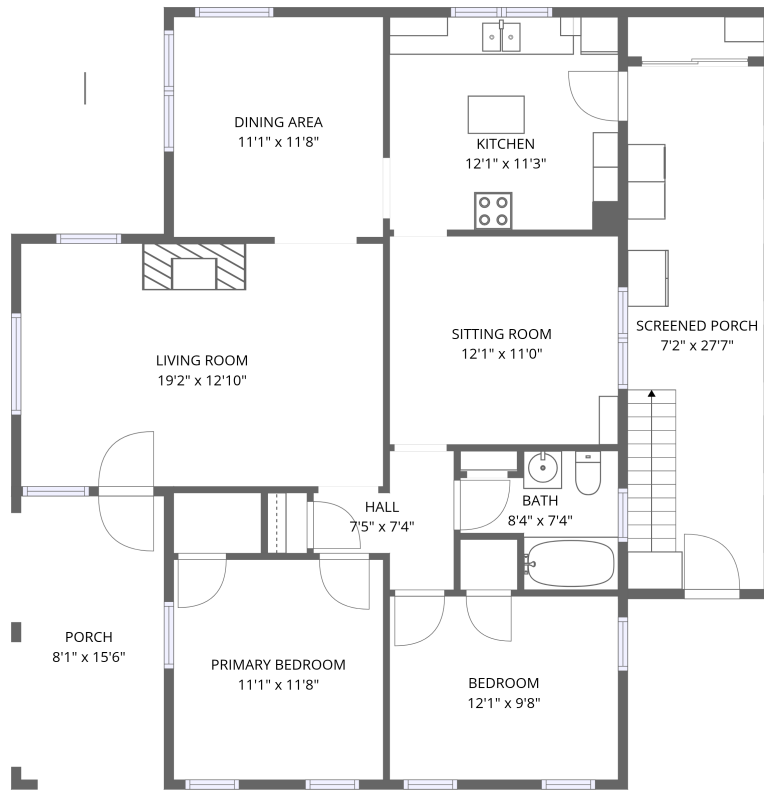


Home data report

# 201 Walnut Lane, Spencer, Virginia, United States



1st floor

**Total Area: 1065 sq. ft**


1st Floor: 1065 sq. ft

Excluded: Screened porch 199 sq. ft, Porch 125 sq. ft, Walls: 100 sq. ft

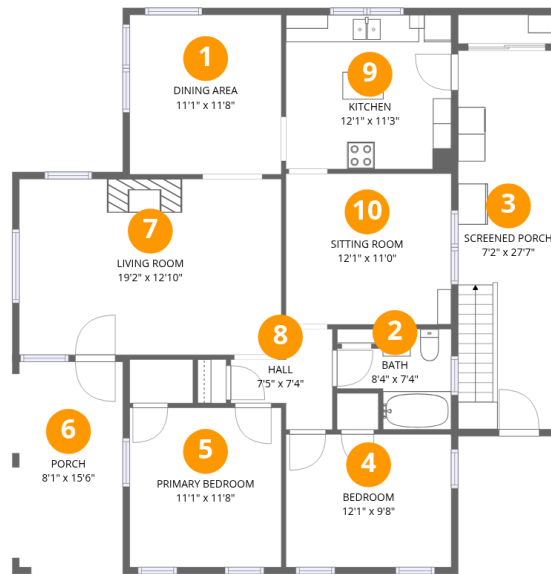
## Property summary

 **1** Floors

 **2** Bedrooms

 **1** Bathrooms

# 201 Walnut Lane, Spencer, Virginia, United States



## Room dimensions

Floor 1

Total: 1065 sqft

Excluded: 324 sqft

#		Dimensions	sqft	Counted as living area
1	Dining Area	11'1" x 11'8"	129 sq. ft	Yes
2	Bath	8'4" x 7'4"	61 sq. ft	Yes
3	Screened Porch	7'2" x 27'7"	199 sq. ft	No
4	Bedroom	12'1" x 9'8"	117 sq. ft	Yes
5	Primary Bedroom	11'1" x 11'8"	129 sq. ft	Yes
6	Porch	8'1" x 15'6"	125 sq. ft	No
7	Living Room	19'2" x 12'10"	246 sq. ft	Yes
8	Hall	7'5" x 7'4"	55 sq. ft	Yes
9	Kitchen	12'1" x 11'3"	136 sq. ft	Yes
10	Sitting Room	12'1" x 11'0"	133 sq. ft	Yes

## 1 Floor 1 - Dining Area



Dimensions: 11'1" x 11'8"  
Area: 129 sq. ft  
Counted as living area: Yes

Heated: Yes  
Finished: Yes  
Enclosed: Yes  
Contiguous: Yes  
Permitted: Yes  
Wet space: No  
Addition: No  
Conversion: No

## 2 Floor 1 - Bath



Dimensions: 8'4" x 7'4"  
Area: 61 sq. ft  
Counted as living area: Yes

Heated: Yes  
Finished: Yes  
Enclosed: Yes  
Contiguous: Yes  
Permitted: Yes  
Wet space: Yes  
Addition: No  
Conversion: No

### 3 Floor 1 - Screened Porch



Dimensions: 7'2" x 27'7"  
Area: 199 sq. ft  
Counted as living area: No

Heated: No  
Finished: Yes  
Enclosed: No  
Contiguous: Yes  
Permitted: Yes  
Wet space: No  
Addition: No  
Conversion: No

### 4 Floor 1 - Bedroom



Dimensions: 12'1" x 9'8"  
Area: 117 sq. ft  
Counted as living area: Yes

Heated: Yes  
Finished: Yes  
Enclosed: Yes  
Contiguous: Yes  
Permitted: Yes  
Wet space: No  
Addition: No  
Conversion: No

### 5 Floor 1 - Primary Bedroom



Dimensions: 11'1" x 11'8"  
Area: 129 sq. ft  
Counted as living area: Yes

Heated: Yes  
Finished: Yes  
Enclosed: Yes  
Contiguous: Yes  
Permitted: Yes  
Wet space: No  
Addition: No  
Conversion: No

## 6 Floor 1 - Porch



Dimensions: 8'1" x 15'6"  
Area: 125 sq. ft  
Counted as living area: No

Heated: No  
Finished: No  
Enclosed: No  
Contiguous: Yes  
Permitted: Yes  
Wet space: No  
Addition: No  
Conversion: No

## 7 Floor 1 - Living Room



Dimensions: 19'2" x 12'10"  
Area: 246 sq. ft  
Counted as living area: Yes

Heated: Yes  
Finished: Yes  
Enclosed: Yes  
Contiguous: Yes  
Permitted: Yes  
Wet space: No  
Addition: No  
Conversion: No

## 8 Floor 1 - Hall



Dimensions: 7'5" x 7'4"  
Area: 55 sq. ft  
Counted as living area: Yes

Heated: Yes  
Finished: Yes  
Enclosed: Yes  
Contiguous: Yes  
Permitted: Yes  
Wet space: No  
Addition: No  
Conversion: No

**9** Floor 1 - Kitchen



Dimensions: 12'1" x 11'3"  
Area: 136 sq. ft  
Counted as living area: Yes

Heated: Yes  
Finished: Yes  
Enclosed: Yes  
Contiguous: Yes  
Permitted: Yes  
Wet space: No  
Addition: No  
Conversion: No

**10** Floor 1 - Sitting Room



Dimensions: 12'1" x 11'0"  
Area: 133 sq. ft  
Counted as living area: Yes

Heated: Yes  
Finished: Yes  
Enclosed: Yes  
Contiguous: Yes  
Permitted: Yes  
Wet space: No  
Addition: No  
Conversion: No