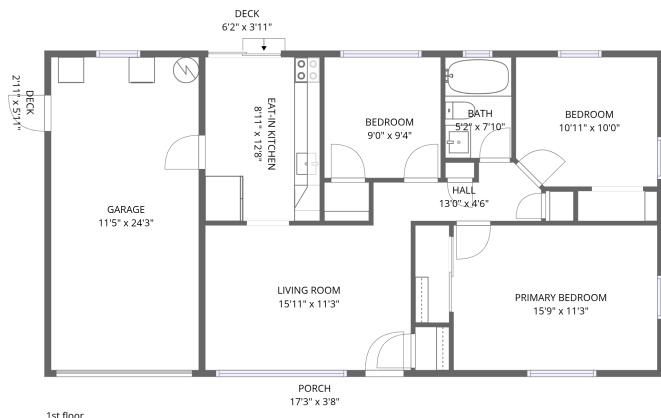
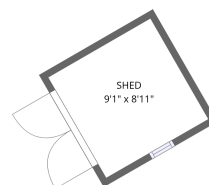


Home data report

1485 South Prescott Avenue, Brookhill, Clearwater, Pinellas County, Florida, United States, 33756



Total Area: 849 sq. ft

1st Floor: 849 sq. ft

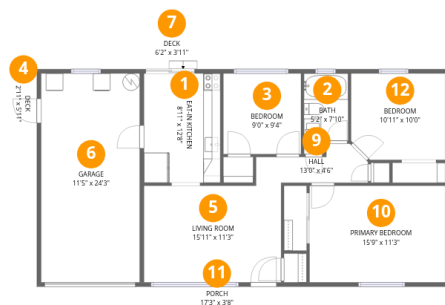
Excluded: Garage 277 sq. ft, Shed 82 sq. ft, Deck 41 sq. ft, Porch 63 sq. ft, Walls: 104 sq. ft

Property summary



Home data report

1485 South Prescott Avenue, Brookhill, Clearwater, Pinellas County, Florida, United States, 33756



Room dimensions

Floor 1

Total:849sqft

Excluded: 463sqft

#		Dimensions	sqft	Counted as living area
1	Eat-in Kitchen	8'11" x 12'8"	113 sq. ft	Yes
2	Bath	5'2" x 7'10"	40 sq. ft	Yes
3	Bedroom	9'0" x 9'4"	84 sq. ft	Yes
4	Deck	2'11" x 5'11"	17 sq. ft	No
5	Living Room	15'11" x 11'3"	179 sq. ft	Yes
6	Garage	11'5" x 24'3"	277 sq. ft	No
7	Deck	6'2" x 3'11"	24 sq. ft	No
8	Shed	9'1" x 8'11"	81 sq. ft	No
9	Hall	13'0" x 4'6"	59 sq. ft	Yes
10	Primary Bedroom	15'9" x 11'3"	177 sq. ft	Yes
11	Porch	17'3" x 3'8"	63 sq. ft	No

Home data report

**1485 South Prescott Avenue, Brookhill, Clearwater, Pinellas
County, Florida, United States, 33756**

#		Dimensions	sqft	Counted as living area
12	Bedroom	10'11" x 10'0"	110 sq. ft	Yes

1485 South Prescott Avenue, Brookhill, Clearwater, Pinellas County, Florida, United States, 33756

1 Floor 1 - Eat-in Kitchen



Dimensions: 8'11" x 12'8"
Area: 113 sq. ft
Counted as living area: Yes

Heated: Yes
Finished: Yes
Enclosed: Yes
Contiguous: Yes
Permitted: Yes
Wet space: No
Addition: No
Conversion: No



2 Floor 1 - Bath



Dimensions: 5'2" x 7'10"
Area: 40 sq. ft
Counted as living area: Yes

Heated: Yes
Finished: Yes
Enclosed: Yes
Contiguous: Yes
Permitted: Yes
Wet space: Yes
Addition: No
Conversion: No



1485 South Prescott Avenue, Brookhill, Clearwater, Pinellas County, Florida, United States, 33756

3 Floor 1 - Bedroom



Dimensions: 9'0" x 9'4"
Area: 84 sq. ft
Counted as living area: Yes

Heated: Yes
Finished: Yes
Enclosed: Yes
Contiguous: Yes
Permitted: Yes
Wet space: No
Addition: No
Conversion: No



4 Floor 1 - Deck



Dimensions: 2'11" x 5'11"
Area: 17 sq. ft
Counted as living area: No

Heated: No
Finished: No
Enclosed: No
Contiguous: Yes
Permitted: Yes
Wet space: No
Addition: No
Conversion: No



5 Floor 1 - Living Room



Dimensions: 15'11" x 11'3"
Area: 179 sq. ft
Counted as living area: Yes

Heated: Yes
Finished: Yes
Enclosed: Yes
Contiguous: Yes
Permitted: Yes
Wet space: No
Addition: No
Conversion: No



1485 South Prescott Avenue, Brookhill, Clearwater, Pinellas County, Florida, United States, 33756

6 Floor 1 - Garage



Dimensions: 11'5" x 24'3"
Area: 277 sq. ft
Counted as living area: No

Heated: No
Finished: No
Enclosed: Yes
Contiguous: Yes
Permitted: Yes
Wet space: No
Addition: No
Conversion: No



7 Floor 1 - Deck



Dimensions: 6'2" x 3'11"
Area: 24 sq. ft
Counted as living area: No

Heated: No
Finished: No
Enclosed: No
Contiguous: Yes
Permitted: Yes
Wet space: No
Addition: No
Conversion: No



8 Floor 1 - Shed



Dimensions: 9'1" x 8'11"
Area: 81 sq. ft
Counted as living area: No

Heated: No
Finished: No
Enclosed: No
Contiguous: Yes
Permitted: Yes
Wet space: No
Addition: No
Conversion: No



1485 South Prescott Avenue, Brookhill, Clearwater, Pinellas County, Florida, United States, 33756

9 Floor 1 - Hall



Dimensions: 13'0" x 4'6"
Area: 59 sq. ft
Counted as living area: Yes

Heated: Yes
Finished: Yes
Enclosed: Yes
Contiguous: Yes
Permitted: Yes
Wet space: No
Addition: No
Conversion: No



10 Floor 1 - Primary Bedroom



Dimensions: 15'9" x 11'3"
Area: 177 sq. ft
Counted as living area: Yes

Heated: Yes
Finished: Yes
Enclosed: Yes
Contiguous: Yes
Permitted: Yes
Wet space: No
Addition: No
Conversion: No



11 Floor 1 - Porch



Dimensions: 17'3" x 3'8"
Area: 63 sq. ft
Counted as living area: No

Heated: No
Finished: No
Enclosed: No
Contiguous: Yes
Permitted: Yes
Wet space: No
Addition: No
Conversion: No



Home data report

**1485 South Prescott Avenue, Brookhill, Clearwater, Pinellas
County, Florida, United States, 33756**

12 Floor 1 - Bedroom



Dimensions: 10'11" x 10'0"
Area: 110 sq. ft
Counted as living area: Yes

Heated: Yes
Finished: Yes
Enclosed: Yes
Contiguous: Yes
Permitted: Yes
Wet space: No
Addition: No
Conversion: No

