



Total Area: 1742 sq. ft

Basement: 0 sq. ft, 1st Floor: 753 sq. ft, 2nd Floor: 989 sq. ft

Excluded: Basement 718 sq. ft, Garage 437 sq. ft, Patio 143 sq. ft, Porch 69 sq. ft, Open to below 158 sq. ft, Walls: 202 sq. ft

Property summary

 **3** Floors

 **2** Bedrooms

 **2** Bathrooms

Home data report

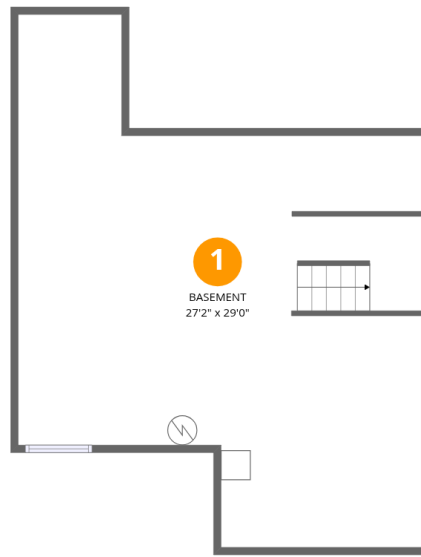
610 Clarendon Loop, Castle Pines, CO, US



1
Half baths



1
Garages



Room dimensions

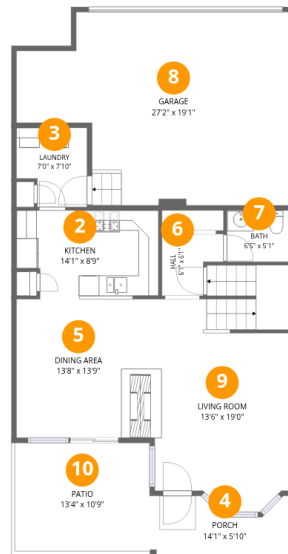
Floor 1 Below grade

Total: 0sqft

Excluded: 718sqft

#		Dimensions	sqft	Counted as living area
1	Basement	27'2" x 29'0"	712 sq. ft	No

610 Clarendon Loop, Castle Pines, CO, US



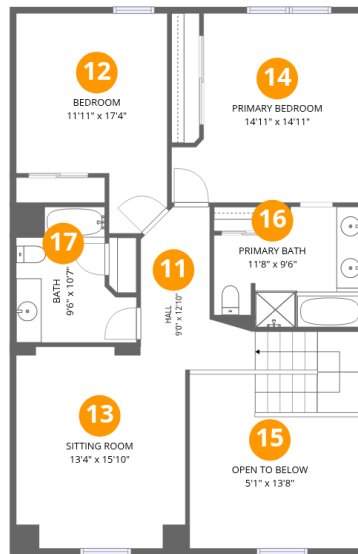
Room dimensions

Floor 2

Total: 753 sqft

Excluded: 649 sqft

#		Dimensions	sqft	Counted as living area
2	Kitchen	14'1" x 8'9"	116 sq. ft	Yes
3	Laundry	7'0" x 7'10"	49 sq. ft	Yes
4	Porch	14'1" x 5'10"	69 sq. ft	No
5	Dining Area	13'8" x 13'9"	188 sq. ft	Yes
6	Hall	6'1" x 6'1"	31 sq. ft	Yes
7	Bath	6'5" x 5'1"	33 sq. ft	Yes
8	Garage	27'2" x 19'1"	437 sq. ft	No
9	Living Room	13'6" x 19'0"	293 sq. ft	Yes
10	Patio	13'4" x 10'9"	143 sq. ft	No



Room dimensions

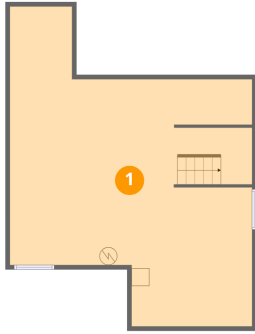
Floor 3

Total:989sqft

Excluded: 158sqft

#		Dimensions	sqft	Counted as living area
11	Hall	9'0" x 12'10"	135 sq. ft	Yes
12	Bedroom	11'11" x 17'4"	169 sq. ft	Yes
13	Sitting Room	13'4" x 15'10"	208 sq. ft	Yes
14	Primary Bedroom	14'11" x 14'11"	197 sq. ft	Yes
15	Open To Below	5'1" x 13'8"	158 sq. ft	No
16	Primary Bath	11'8" x 9'6"	93 sq. ft	Yes
17	Bath	9'6" x 10'7"	79 sq. ft	Yes

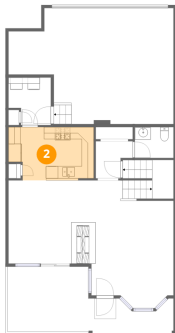
1 Floor 1 - Basement



Dimensions: 27'2" x 29'0"
Area: 712 sq. ft
Counted as living area: No

Heated: Yes
Finished: No
Enclosed: Yes
Contiguous: Yes
Permitted: Yes
Wet space: No
Addition: No
Conversion: No

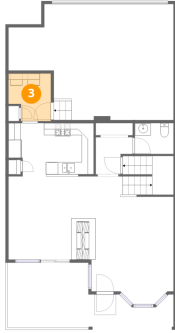
2 Floor 2 - Kitchen



Dimensions: 14'1" x 8'9"
Area: 116 sq. ft
Counted as living area: Yes

Heated: Yes
Finished: Yes
Enclosed: Yes
Contiguous: Yes
Permitted: Yes
Wet space: No
Addition: No
Conversion: No

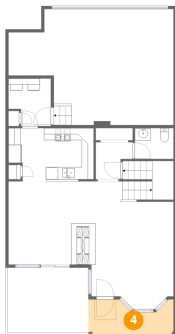
3 Floor 2 - Laundry



Dimensions: 7'0" x 7'10"
Area: 49 sq. ft
Counted as living area: Yes

Heated: Yes
Finished: Yes
Enclosed: Yes
Contiguous: Yes
Permitted: Yes
Wet space: No
Addition: No
Conversion: No

4 Floor 2 - Porch



Dimensions: 14'1" x 5'10"
Area: 69 sq. ft
Counted as living area: No

Heated: No
Finished: No
Enclosed: No
Contiguous: Yes
Permitted: Yes
Wet space: No
Addition: No
Conversion: No

5 Floor 2 - Dining Area



Dimensions: 13'8" x 13'9"
Area: 188 sq. ft
Counted as living area: Yes

Heated: Yes
Finished: Yes
Enclosed: Yes
Contiguous: Yes
Permitted: Yes
Wet space: No
Addition: No
Conversion: No

6 Floor 2 - Hall



Dimensions: 6'1" x 6'1"
Area: 31 sq. ft
Counted as living area: Yes

Heated: Yes
Finished: Yes
Enclosed: Yes
Contiguous: Yes
Permitted: Yes
Wet space: No
Addition: No
Conversion: No

7 Floor 2 - Bath



Dimensions: 6'5" x 5'1"
Area: 33 sq. ft
Counted as living area: Yes

Heated: Yes
Finished: Yes
Enclosed: Yes
Contiguous: Yes
Permitted: Yes
Wet space: Yes
Addition: No
Conversion: No

8 Floor 2 - Garage



Dimensions: 27'2" x 19'1"
Area: 437 sq. ft
Counted as living area: No

Heated: No
Finished: No
Enclosed: Yes
Contiguous: Yes
Permitted: Yes
Wet space: No
Addition: No
Conversion: No

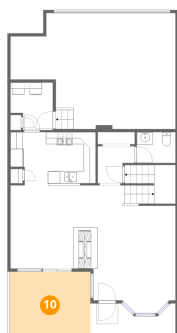
9 Floor 2 - Living Room



Dimensions: 13'6" x 19'0"
Area: 293 sq. ft
Counted as living area: Yes

Heated: Yes
Finished: Yes
Enclosed: Yes
Contiguous: Yes
Permitted: Yes
Wet space: No
Addition: No
Conversion: No

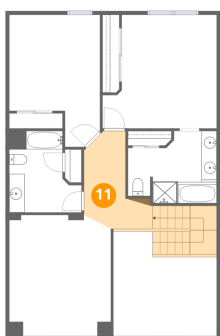
10 Floor 2 - Patio



Dimensions: 13'4" x 10'9"
Area: 143 sq. ft
Counted as living area: No

Heated: No
Finished: No
Enclosed: No
Contiguous: Yes
Permitted: Yes
Wet space: No
Addition: No
Conversion: No

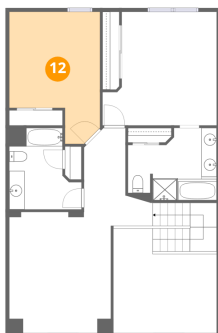
11 Floor 3 - Hall



Dimensions: 9'0" x 12'10"
Area: 135 sq. ft
Counted as living area: Yes

Heated: Yes
Finished: Yes
Enclosed: Yes
Contiguous: Yes
Permitted: Yes
Wet space: No
Addition: No
Conversion: No

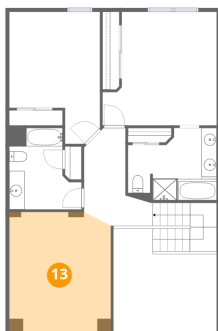
12 Floor 3 - Bedroom



Dimensions: 11'11" x 17'4"
Area: 169 sq. ft
Counted as living area: Yes

Heated: Yes
Finished: Yes
Enclosed: Yes
Contiguous: Yes
Permitted: Yes
Wet space: No
Addition: No
Conversion: No

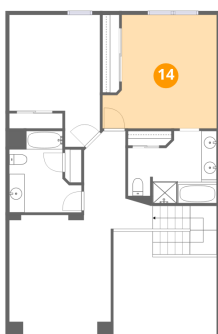
13 Floor 3 - Sitting Room



Dimensions: 13'4" x 15'10"
Area: 208 sq. ft
Counted as living area: Yes

Heated: Yes
Finished: Yes
Enclosed: Yes
Contiguous: Yes
Permitted: Yes
Wet space: No
Addition: No
Conversion: No

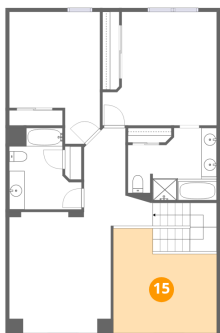
14 Floor 3 - Primary Bedroom



Dimensions: 14'11" x 14'11"
Area: 197 sq. ft
Counted as living area: Yes

Heated: Yes
Finished: Yes
Enclosed: Yes
Contiguous: Yes
Permitted: Yes
Wet space: No
Addition: No
Conversion: No

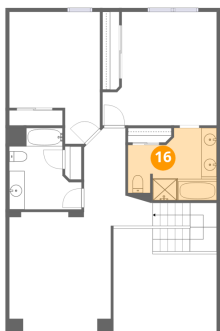
15 Floor 3 - Open To Below



Dimensions: 5'1" x 13'8"
Area: 158 sq. ft
Counted as living area: No

Heated: No
Finished: No
Enclosed: No
Contiguous: Yes
Permitted: No
Wet space: No
Addition: No
Conversion: No

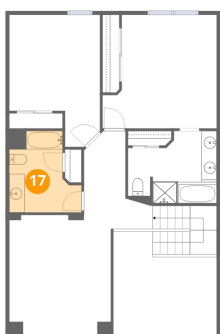
16 Floor 3 - Primary Bath



Dimensions: 11'8" x 9'6"
Area: 93 sq. ft
Counted as living area: Yes

Heated: Yes
Finished: Yes
Enclosed: Yes
Contiguous: Yes
Permitted: Yes
Wet space: Yes
Addition: No
Conversion: No

17 Floor 3 - Bath



Dimensions: 9'6" x 10'7"
Area: 79 sq. ft
Counted as living area: Yes

Heated: Yes
Finished: Yes
Enclosed: Yes
Contiguous: Yes
Permitted: Yes
Wet space: Yes
Addition: No
Conversion: No