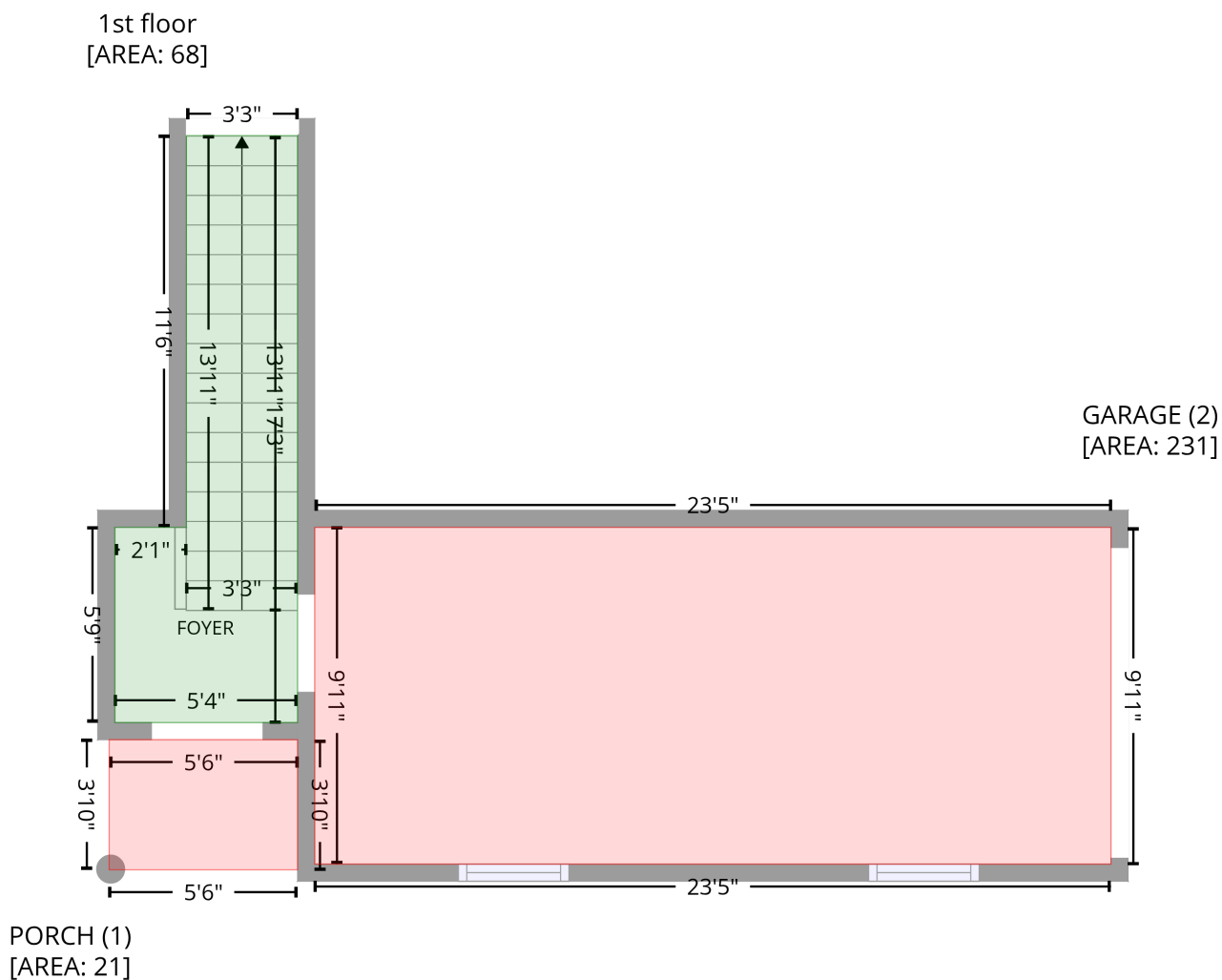


6552 Quarterbridge Lane, Mineral Springs, Charlotte, Mecklenburg County, North Carolina, United States, 28262

Gross Living Area: 1275 sq. ft

Level 1



Space	Area (sq. ft)	Calculation <small>Coordinate Polygon Area Algorithm using inches</small>
1st floor (Living area)	68	$-((284.7 + 284.7) * (285 - 491.9) + (284.7 + 220.2) * (491.9 - 491.9) + (220.2 + 220.2) * (491.9 - 423.1) + (220.2 + 245.4) * (423.1 - 423.1) + (245.4 + 245.4) * (423.1 - 285) + (245.4 + 284.7) * (285 - 285)) * 0.5 * 0.00694$
PORCH (Non-living area)	21	$-((284.7 + 284.7) * (497.9 - 543.8) + (284.7 + 218.2) * (543.8 - 543.8) + (218.2 + 218.2) * (543.8 - 497.9) + (218.2 + 284.7) * (497.9 - 497.9)) * 0.5 * 0.00694$
GARAGE (Non-living area)	231	$-((571.5 + 571.5) * (423.1 - 541.8) + (571.5 + 290.7) * (541.8 - 541.8) + (290.7 + 290.7) * (541.8 - 423.1) + (290.7 + 571.5) * (423.1 - 423.1)) * 0.5 * 0.00694$

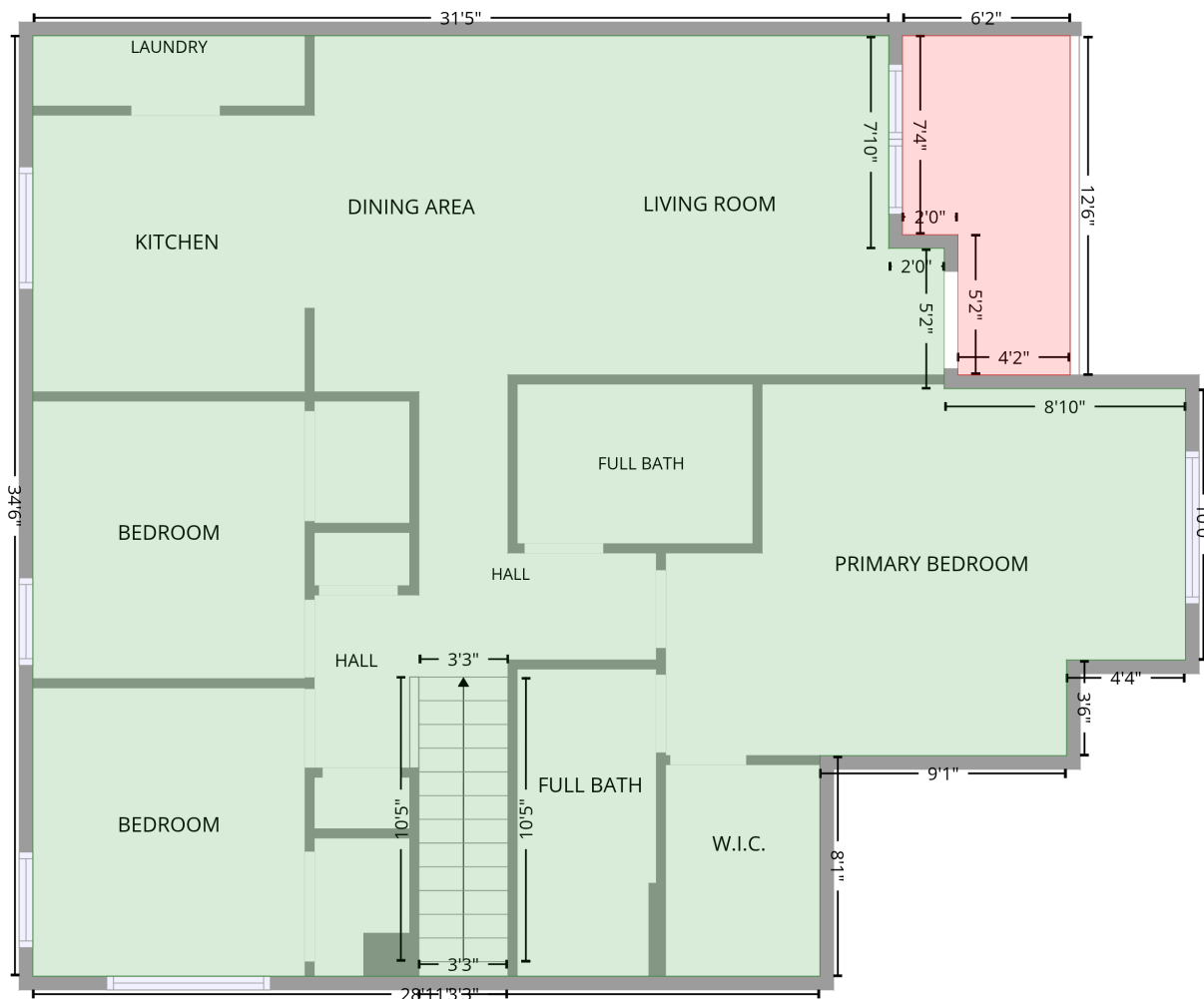
6552 Quarterbridge Lane, Mineral Springs, Charlotte, Mecklenburg County, North Carolina, United States, 28262

Gross Living Area: 1275 sq. ft

Level 2

2nd floor
[AREA: 1207]

BALCONY (1)
[AREA: 66]



Space	Area (sq. ft)	Calculation <small>Coordinate Polygon Area Algorithm using inches</small>
2nd floor (Living area)	1207	$-\left((452.4 + 452.4) * (2.6 - 96.3) + (452.4 + 476.8) * (96.3 - 96.3) + (476.8 + 476.8) * (96.3 - 158.1) + (476.8 + 583.1) * (158.1 - 158.1) + (583.1 + 583.1) * (158.1 - 277.7) + (583.1 + 530.8) * (277.7 - 277.7) + (530.8 + 530.8) * (277.7 - 319.8) + (530.8 + 422.1) * (319.8 - 319.8) + (422.1 + 422.1) * (319.8 - 417.1) + (422.1 + 75.3) * (417.1 - 417.1) + (75.3 + 75.3) * (417.1 - 2.6) + (75.3 + 452.4) * (2.6 - 2.6)\right) * 0.5 * 0.00694$
BALCONY (Non-living area)	66	$-\left((532.3 + 532.3) * (2.6 - 152.1) + (532.3 + 482.8) * (152.1 - 152.1) + (482.8 + 482.8) * (152.1 - 90.3) + (482.8 + 458.4) * (90.3 - 90.3) + (458.4 + 458.4) * (90.3 - 2.6) + (458.4 + 532.3) * (2.6 - 2.6)\right) * 0.5 * 0.00694$